

# PHILIPS

## Ultrasound

### Affiniti

# Designed for your everyday

Stepping up to today's Philips Affiniti Ultrasound System means stepping up to the next level of performance to help with a confident diagnosis using streamlined workflow.

## Upgrade to the latest Affiniti capabilities



### Intuitive use

User interface and workflow are shared across Affiniti and EPIQ Elite ultrasound systems, aiding productivity.



Enhances user workflow with **system-guided protocols** that can be easily customized to suit your needs



**Tablet-like 30.48 cm (12 in) touchscreen** with workflow-related controls for ease of use



**Next Gen AutoSCAN** reduces button pushes by **up to 54%** with pixel-by-pixel real-time optimization and reduces the need for user adjustment while also enhancing transducer plunkability.\*



At just 83.5 kg (184 lb), the system is **16% lighter** than its predecessor system\*\*



**Shared transducer family** across Affiniti, EPIQ Elite and Compact 5000 series systems helps maximize your investment



**Wireless networking** aids workflow

\* When comparing VM10 performance to VM7.

\*\* HD15.



Battery backup with sleep mode allows the system to **sleep in 2 seconds** and **return to full functionality in 20 seconds**

**Consumes nearly 40% less power** compared to our legacy predecessor system\*



## Intelligent imaging



### Flow Viewer

Defines vasculature with a 3D-like appearance using both the velocity and power of the Doppler signal to accurately represent vascular flow topography



### Auto Doppler

Delivers color-box positioning and sample volume placement for vascular imaging in just three steps and also **reduces the number of repetitive button pushes by an average of 68%**<sup>1</sup>



### mC12-3 transducer

Offers high-performance pediatric imaging in a PureWave micro-convex transducer



### MicroFlow Imaging (MFI)

Provides remarkable sensitivity and detail in assessing blood flow



## Confident decisions



### Liver Fat Quantification (LFQ)

Provides tools for quantitative ultrasound parameters to assist physicians in the management of patients with fatty liver disease

### Contrast-enhanced ultrasound (CEUS)

Allows clinicians to study enhancement patterns of liver lesions in real time, allowing for fast and confident diagnosis

### Shear wave elastography

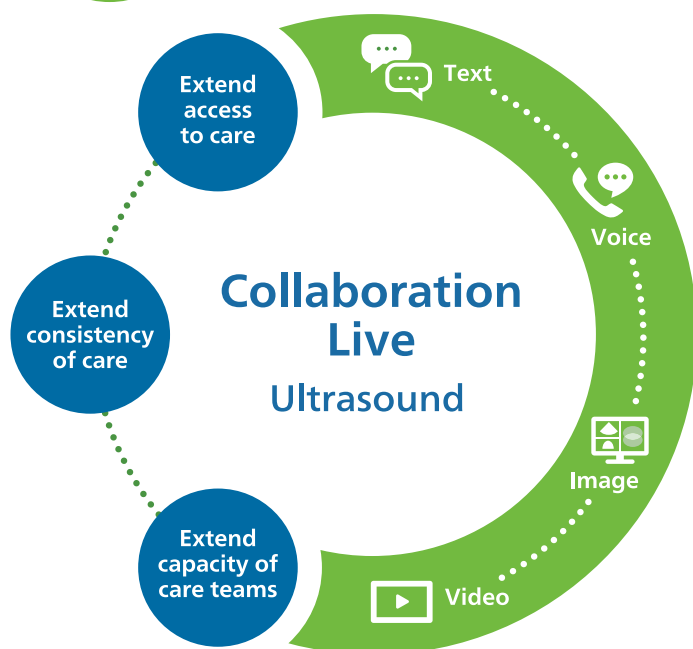
Offers a non-invasive, reproducible and easy way to assess liver stiffness

### Fusion and Navigation

Gives interventional radiologists fast and effective fusion of PET/CT, MR or CT data sets to live ultrasound in under one minute



## Trusted partner



### Ultrasound Collaboration Live with multi-party\*

Extend your team without expanding it  
Now with simultaneous multi-party communication

Up to six users can quickly and securely talk, text, screen share and video stream directly from the ultrasound system for access to multiple clinical resources at a distance.\*\*



\* Affiniti Ultrasound System VM10.0.

\*\* Contract required. Collaboration Live is intended for remote diagnostic use on release 9.0 or higher.

Find out more at [www.philips.com/GI](http://www.philips.com/GI)

CE  
2797

© 2024 Koninklijke Philips N.V. All rights are reserved.  
Philips reserves the right to make changes in specifications and/or to discontinue any product at any time without notice or obligation and will not be liable for any consequences resulting from the use of this publication.



[www.philips.com](http://www.philips.com)  
Printed in the Netherlands.

4522 991 87981 \* OCT 2024