

PHILIPS

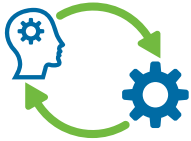
Ultrasound

EPIQ Elite

Redefining performance

Moving to the next level of EPIQ Elite ultrasound system means making full use of nSight Plus Imaging Architecture* a more powerful beamforming technology providing next-generation imaging performance.**

Upgrade to the latest EPIQ Elite capabilities



Intuitive experience



Next Gen AutoSCAN

Reduces button pushes by up to 54% with pixel-by-pixel real-time optimization and reduces the need for user adjustment while also enhancing transducer plunkability.†



Enhanced workflow

Reduces the need for repeat scans. 84% of users reported that rescanning the patient due to unsatisfactory image quality resulting from inappropriate image settings could be avoided.† Now with TGC post-processing to enhance image quality, as well as 2D gain, dynamic range and contrast, and gray maps. Post-processing enhanced quality of reviewed images in 65% of cases and allowed users to modify images to meet clinical expectations in 70% of cases.‡



Confident imaging



mL26-8 transducer

- Our highest frequency transducer in a small footprint form factor
- Delivers increased versatility with a broad range of imaging presets§
- Offers 36% improved spatial resolution and 64% improved penetration in superficial applications§
- Provides a 75% larger field of view with trapezoid imaging¶

Flow Viewer

Defines vasculature with a 3D-like appearance using both the velocity and power of the Doppler signal to enhance vascular flow topography

* Not available on all transducers.

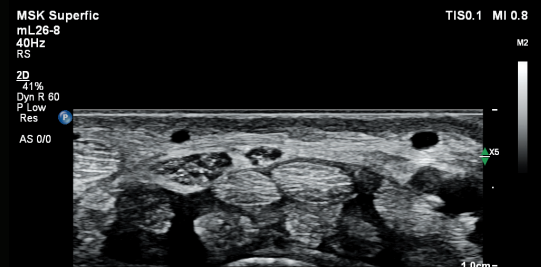
** As compared to nSIGHT beamforming.

† When comparing VM10 performance to VM7.

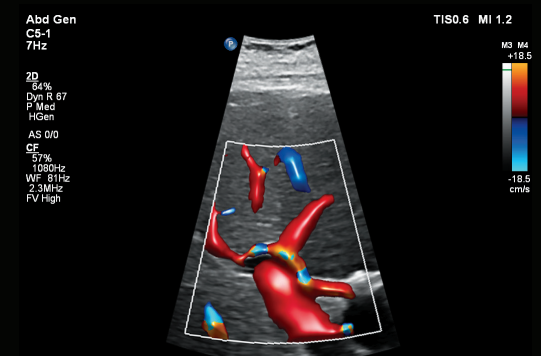
‡ This is based on a sample size of n=37 users.

§ Compared to the predecessor transducer L15-7io.

¶ Compared to the predecessor transducer L15-7io for all depths greater than 1.6 cm.



Wrist imaging with the mL26-8 transducer



Liver imaging with the C5-1 transducer and Flow Viewer



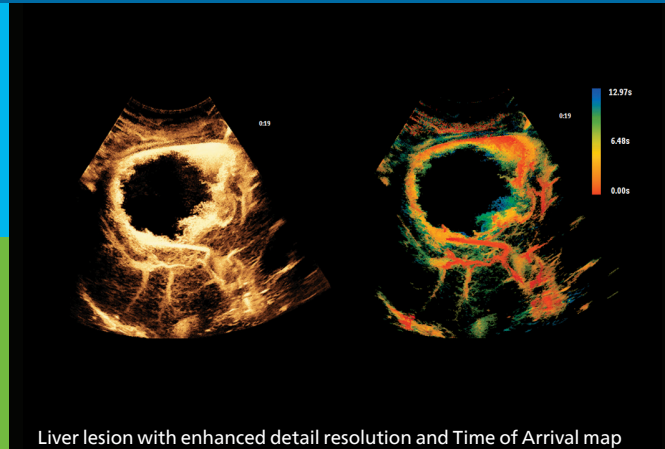
Advanced insights

Microvascular Imaging Super Resolution Contrast-enhanced ultrasound (CEUS) and Time of Arrival

Offers more than 200% improvement in spatial resolution for CEUS*
• Now with dual timers

Advances in fusion and navigation

- Provides Auto Registration for successful alignment of CT or MR volumes to ultrasound in less than one minute
- Allows for continuous patient tracking so that needle location in relation to CT is tracked and updated in real time for procedure visualization



Liver lesion with enhanced detail resolution and Time of Arrival map



Trusted partner

Ultrasound Collaboration Live with Multi-party**

Extend your team without expanding it
Now with simultaneous multi-party communication

Up to six users can quickly and securely talk, text, screen share and video stream directly from the ultrasound system for access to multiple clinical resources at a distance.†



Flexible financing



Defense-in-depth security



Award-winning service‡



Comprehensive clinical education



A world leader in sustainability§

* Compared to previous MVI capability.

** EPIQ Ultrasound System VM10.0.

† Contract required. Collaboration Live is intended for remote diagnostic use on release 9.0 or higher.

‡ Philips is rated number one in overall service performance for ultrasound for 28 consecutive years in the annual IMV ServiceTrak survey in the USA.

§ Philips again achieved a #2 ranking in the leading sustainability benchmark in Dow Jones Sustainability Indices and achieved second place in 2020 on the Wall Street Journal's "100 Most Sustainably Managed Companies in the World" list.

Find out more at www.philips.com/GI

© 2023 Koninklijke Philips N.V. All rights are reserved.
Philips reserves the right to make changes in specifications and/or to discontinue any product at any time without notice or obligation and will not be liable for any consequences resulting from the use of this publication.



www.philips.com
Printed in the Netherlands.

4522 991 82041 * JUN 2023