

Philips Matchline
Flat TV

30"
LCD
Progressive Scan

30PF9946



Superior picture quality

with latest high definition LCD display

An elegantly designed TV that you can hang on the wall is now a reality. This Flat TV delivers best-in-class picture quality for your home entertainment setup.

Vivid, natural and razor sharp images

- High-definition LCD WXGA display, 1280 x 768p
- Digital Crystal Clear provides vivid cinema-like images
- Progressive Scan component video for optimised image quality
- Active Control with Light Sensor optimises picture quality

Superb sound reproduction

- Virtual Dolby Surround for a cinema-like audio experience

Multi-purpose convenience

- View PC content in a second window on your TV
- Twin page teletext allows simultaneous viewing of two pages
- 10 page Smart Text for fast access to teletext.
- PC input lets you also use your TV as a PC monitor

PHILIPS

Specifications

Picture/Display

- Aspect ratio: 15:9
- Diagonal screen size (inch): 30 inch
- Diagonal screen size (metric): 76 cm
- Panel resolution: 1280 x 768p
- Brightness: 450 cd/m²
- Picture enhancement: Digital Crystal Clear, Progressive scan, Comb Filter Digital, Active Control + Light sensor, 3/2 - 2/2 motion pull down, Widescreen Plus
- Contrast ratio (typical): 350:1
- Display screen type: LCD WXGA Active Matrix TFT
- Response time (typical): 12 ms
- Viewing angle (horizontal): 176 degree
- Screen enhancement: Anti-ageing circuit, Anti-Reflection coated screen

Supported Display Resolution

- Computer formats: 640 x 480, 60, 67, 72, 75 Hz, 800 x 600, 56, 60, 72, 75 Hz, 1024 x 768, 60, 70, 75 Hz
- Video Formats: 640 x 480p - 2Fh

Tuner/Reception/Transmission

- Aerial Input: 75 ohm coaxial (IEC75)
- Tuner bands: Hyperband, S-Channel, UHF, VHF
- TV system: PAL, SECAM
- Video Playback: NTSC, PAL, SECAM

Convenience

- Ease of Installation: Auto Volume Leveller, Autostore, PLL Digital Tuning, Plug and Play
- Ease of Use: On-Screen Display, Smart Picture, Top Controls

- Screen Format Adjustments: 6 Widescreen Modes, Auto Format, Subtitle and Heading Shift
- Remote Control: Multi-functional
- Remote control type: RC4333
- Teletext: 10-page Smart Text
- Picture in Picture: Twin page text

Sound

- Output power (RMS): 2 x 15 W
- Sound System: Virtual Dolby Surround
- Sound Enhancement: Smart Sound

Loudspeakers

- Built-in speakers: 2

Connectivity

- Ext 1 Scart: CVBS in/out, RGB
- Ext 2 Scart: CVBS in/out, Y/C
- Other connections: Analogue audio Left/Right out, Antenna IEC75, PC-in VGA + Audio L/R in

Power

- Mains power: AC 220-240 V +/- 10%
- Ambient temperature: 5°C to 40°C
- Power consumption: 156 W
- Standby power consumption: < 3 W

Accessories

- Included accessories: Tabletop stand, Wall mounting bracket
- Optional accessories: Floor stand

Dimensions

- Product weight: 18 kg
- Weight incl. Packaging: 23 kg

Highlights

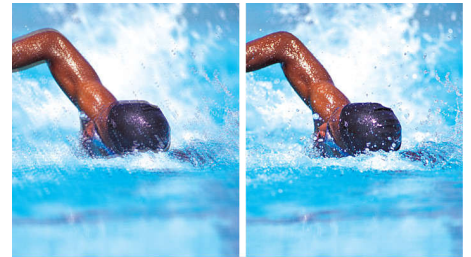
LCD WXGA display, 1280 x 768p

This WXGA display with state-of-the-art LCD screen technology gives you an HD resolution of 1280 x 768p pixels. It produces brilliant flicker-free progressive scan pictures with optimum brightness and superb colours. This sharp and vibrant image will provide you with an enhanced viewing experience.

Digital Crystal Clear

Digital Crystal Clear is a package of picture innovations that digitally adjusts and optimises picture quality to optimal contrast, colour and sharpness levels. It's like watching vivid cinema-like images.

Progressive Scan



Progressive Scan doubles the vertical resolution of the image resulting in a noticeably sharper picture. Instead of sending a field comprising the odd lines to the screen first, followed by the field with the even lines, it writes both fields at the same time. A full image is created instantaneously, using the maximum resolution. At such a speed, your eye perceives a sharper picture with no line structure.

Active Control + Light Sensor

Active Control is a unique and intelligent way of optimising picture quality by measuring and analysing the incoming signal to automatically adjust picture quality settings. Active Control with Light Sensor uses a sensor to adjust the picture brightness depending on the room lighting conditions.

Virtual Dolby Surround

Virtual Dolby Surround is a processing technology for enhancing surround sound effects. It will create the sensation of Dolby Pro Logic without the necessity of additional rear speakers. You become totally immersed in your television experience.

PC input

With PC input you can connect your TV to a computer and use the TV as a PC monitor.

Picture in Graphics

Picture-in-Graphics is a small window in the main picture, allowing you to watch data/graphics on your main TV screen. It provides the ability to simultaneously watch data/graphics and the TV.

Twin page teletext

Twin page teletext allows you to simultaneously view two teletext pages side by side

10-page Smart Text

Teletext is a common system transmitted by most broadcasters. The 10-page smart text feature gives you fast access to information when changing pages.

