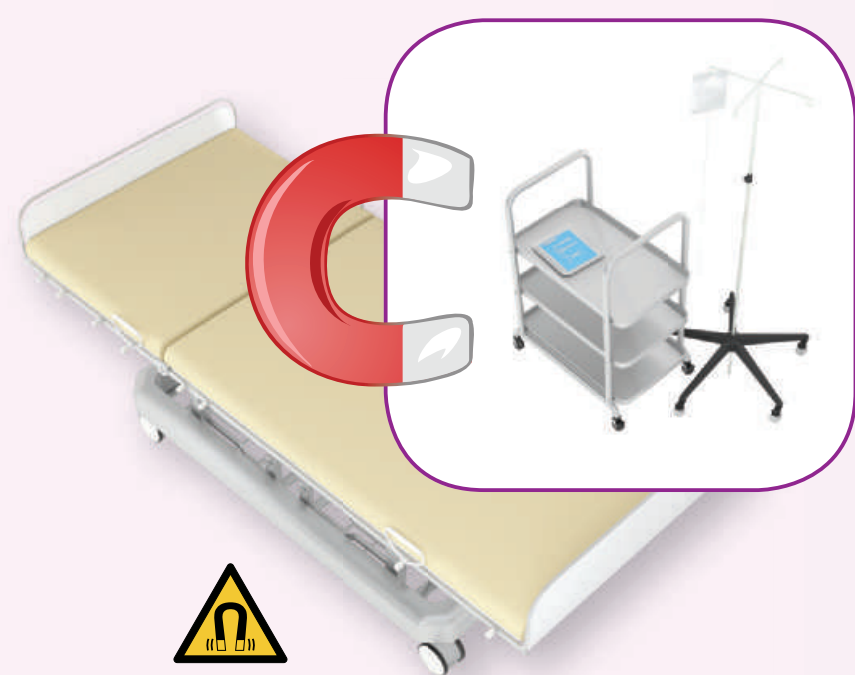


Safe and comfortable examination of patients is a key priority for operators. This poster highlights the basic safety guidelines. It is not a replacement for the Instruction for Use. You must also read and understand chapter 2 of the Instructions for Use. If any part is unclear, please contact your local safety officer, physicist or applications specialist.

Screen all patients for contra-indications and increased risks

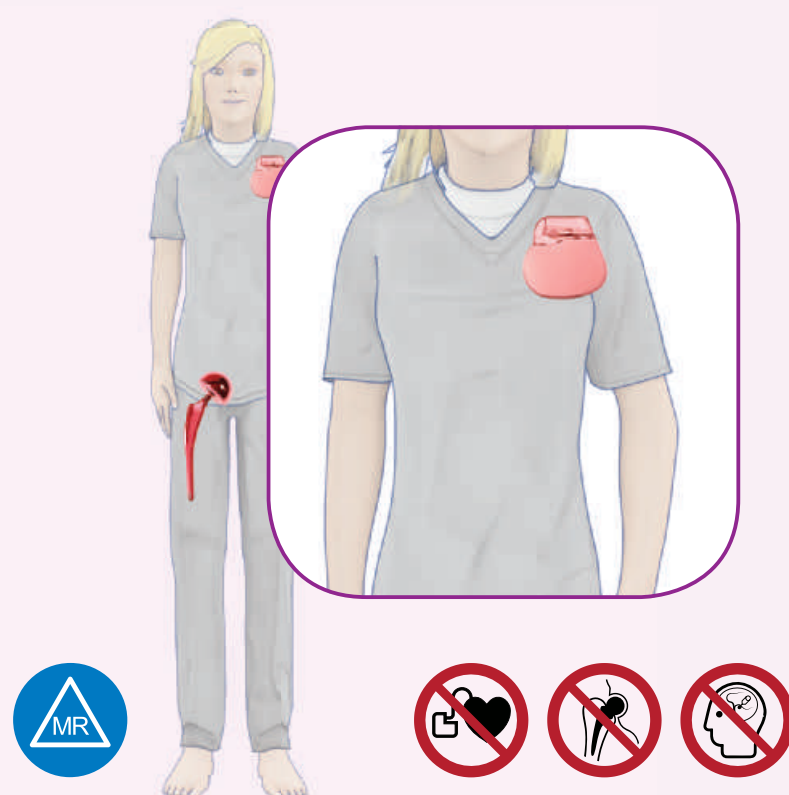


# MR the safe way



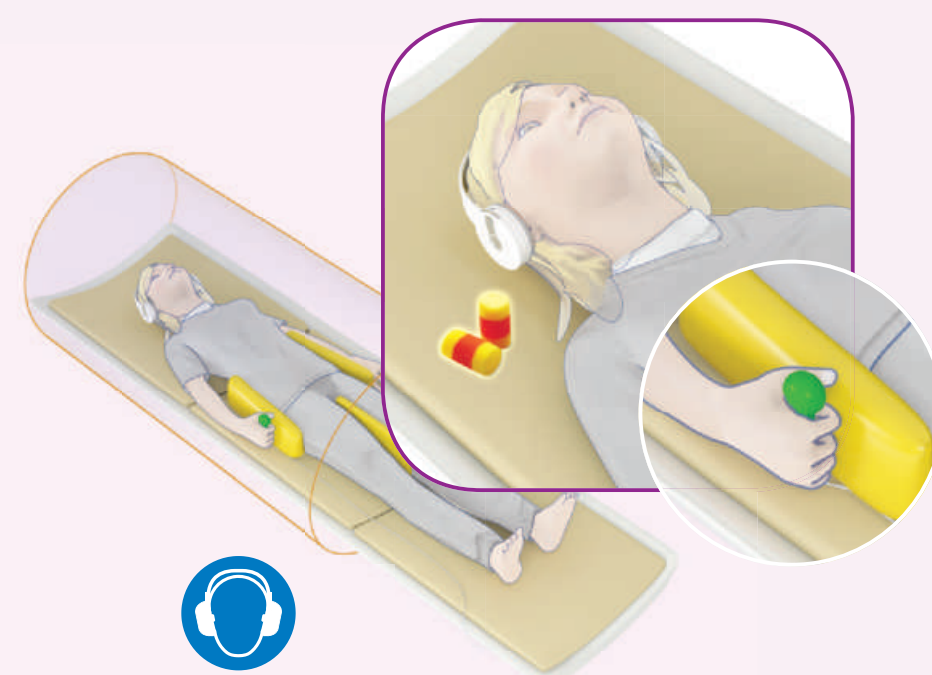
## Projectile Effects

Do not bring ferro-magnetic objects into the examination room. The attraction by the magnet may lead to serious or fatal injury to the patient.



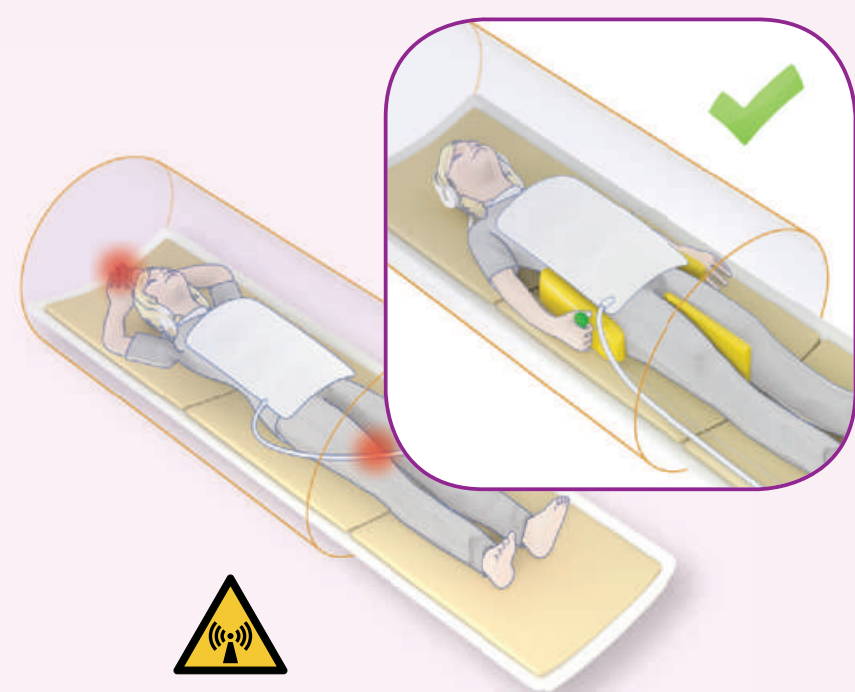
## Implants

Adhere strictly to the conditions as specified by the implant manufacturer. If conditions are not known, do not scan.



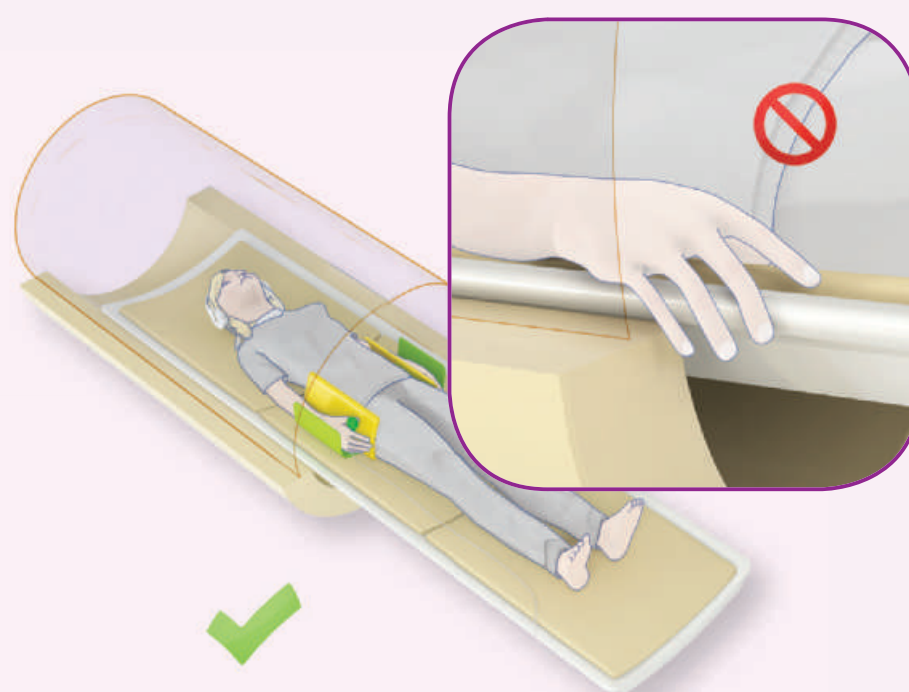
## Nurse Call / Hearing Protection

Use the nurse call with every patient and give instructions about its use. Provide appropriate hearing protection for every patient and anyone else in the room.



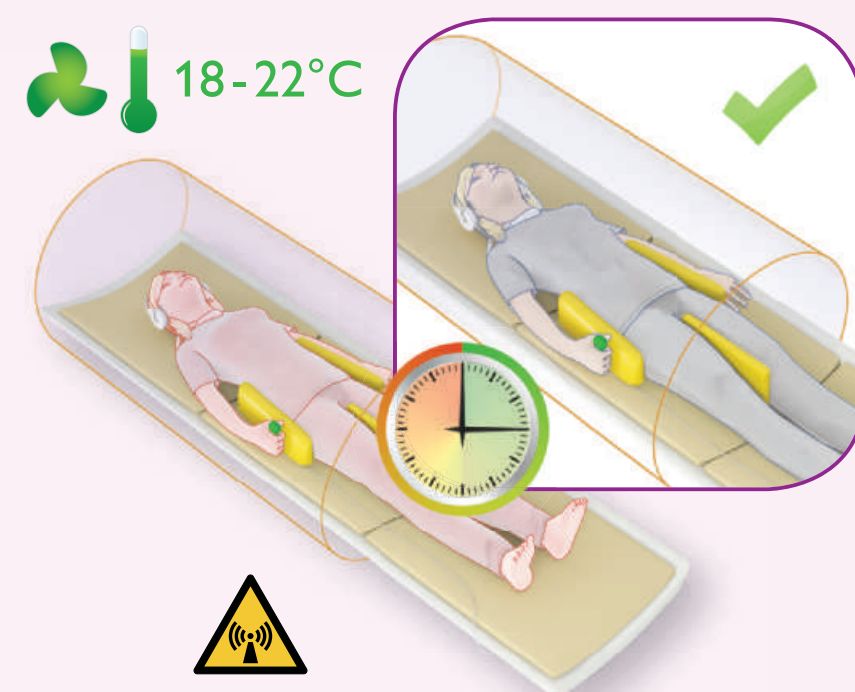
## Patient Positioning

Prevent contact between body parts or skin and coil cables. Verify clearance between body parts and the bore wall.



## Finger Pinching

Verify that patient's hands are on the tabletop before moving the tabletop into the magnet.



## RF Energy Exposure

Warming sensations are to be expected in MRI, they are caused by the RF power needed to acquire images. Take appropriate precautions to prevent heat dissipation from becoming a hazard.

