

リモコンとリモコン用単4乾電池

保証書

クイックスタートガイド



電源ケーブル

RS232 ケーブル

RS232 デジタルケーブル

IR センサーケーブル



D-sub ケーブル

HDMI ケーブル

ダイポールアンテナ x2



SD カードカバー

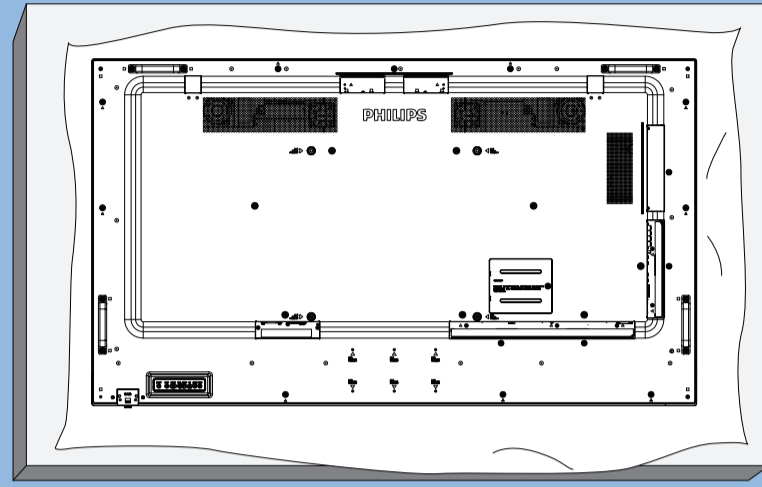
M3 ネジ x1

M2 ネジ x2

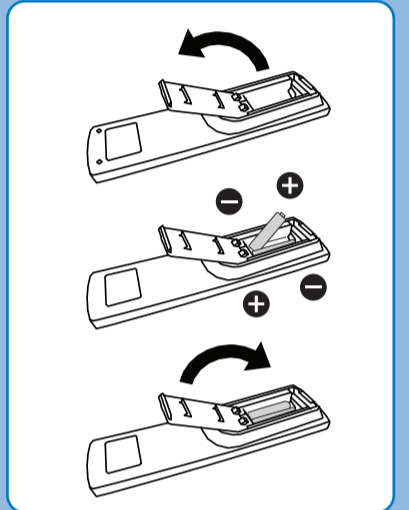
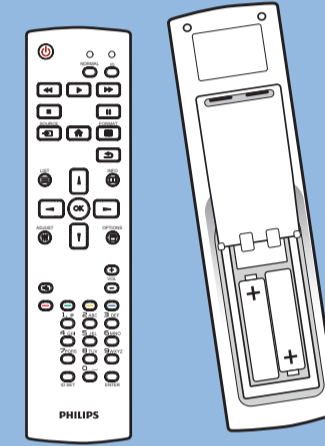
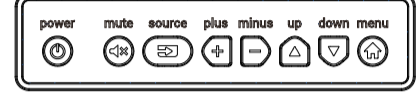
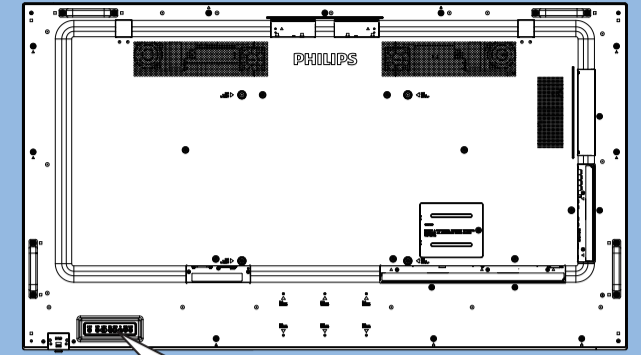
Philips ロゴ



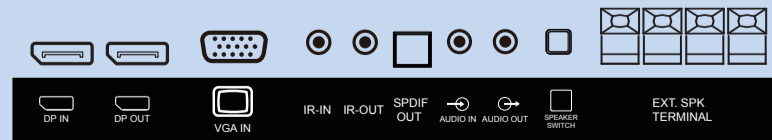
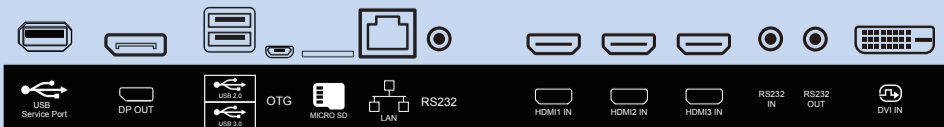
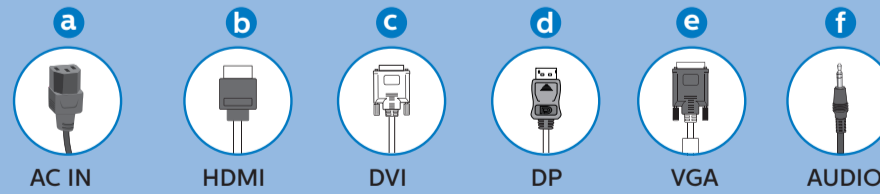
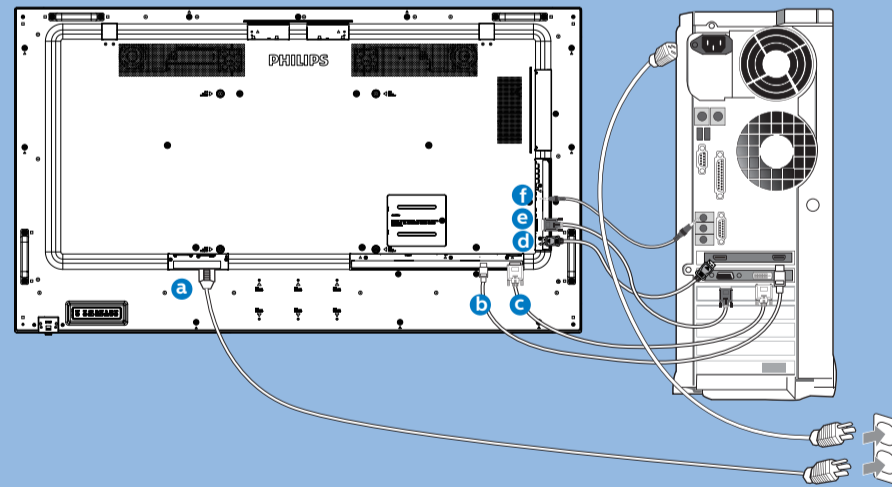
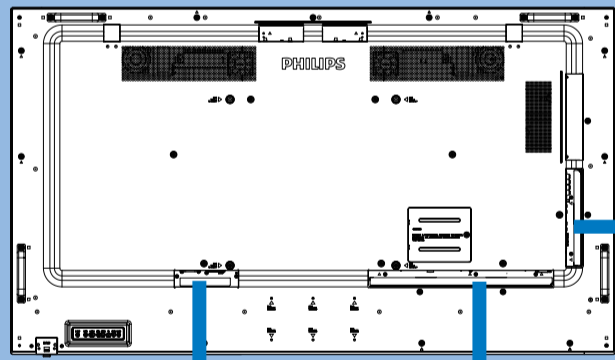
1



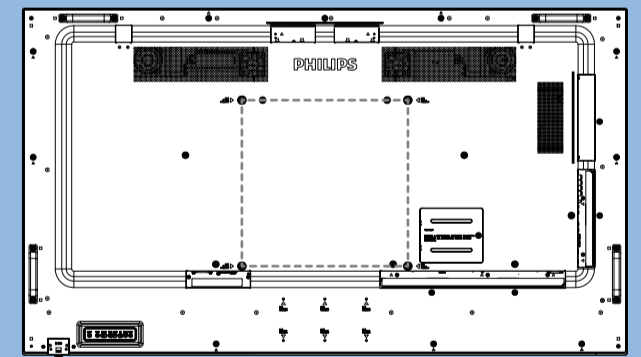
2



3



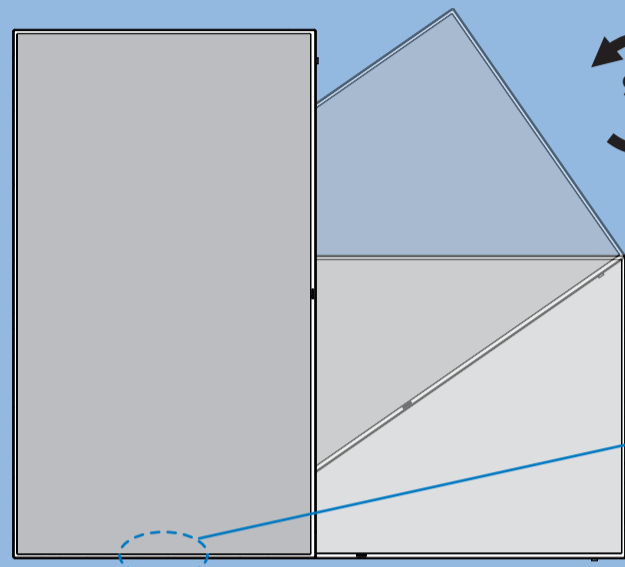
4



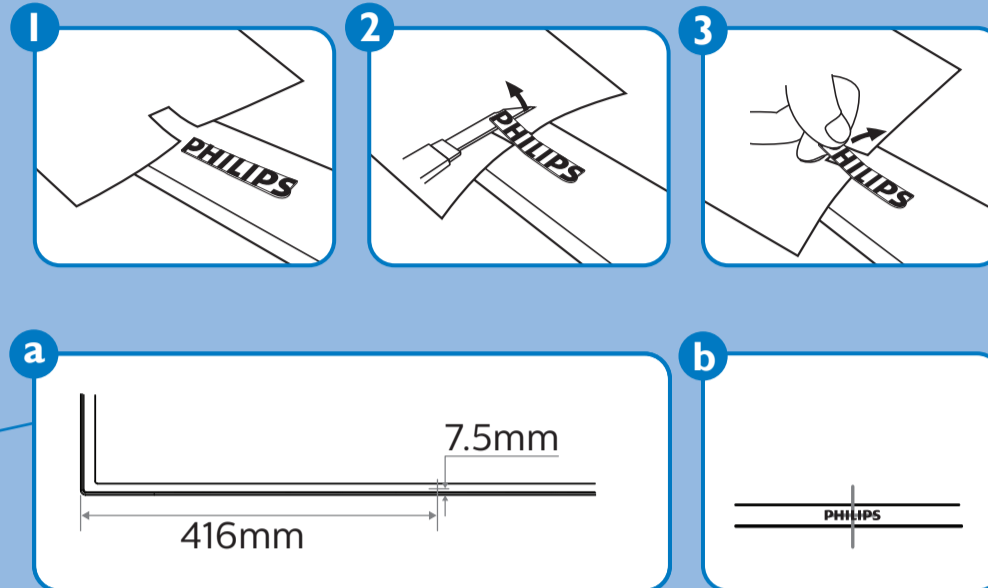
M6 * (10+X) mm (X=Thickness of Wall mount BKT)
65BDL4150D: 400mmx400mm

65BDL4150D/11

5



90°



Quick Start

PHILIPS

