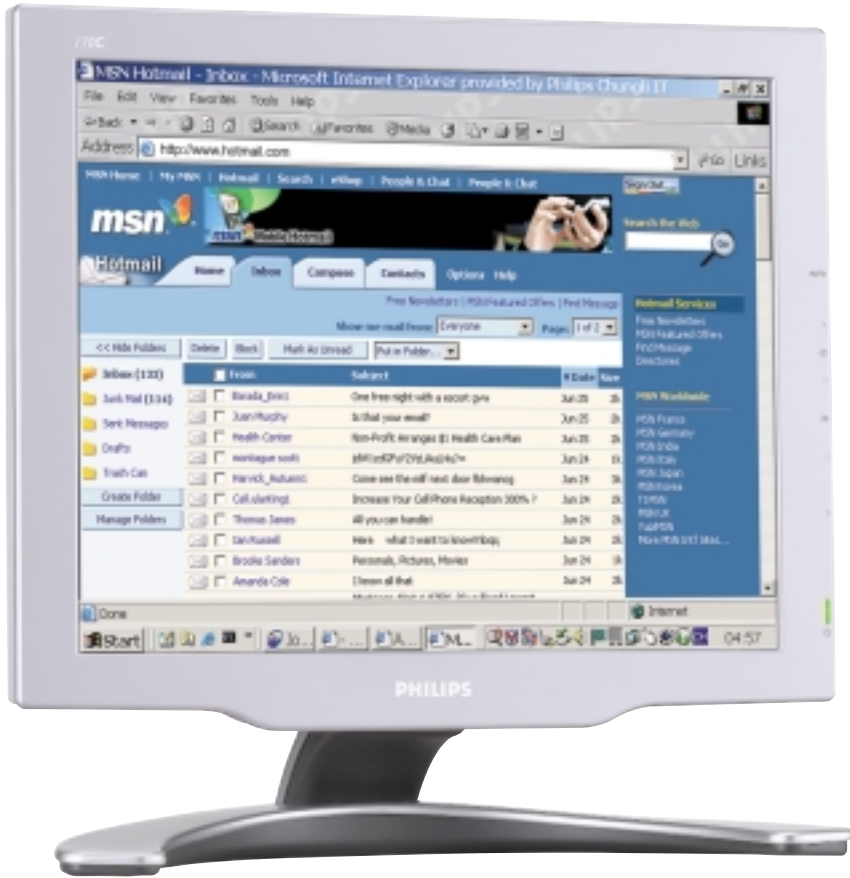


17" TFT LCD SXGA monitor



Attractive design for the stylish home

- 17-inch color LCD monitor with excellent display performance
- Standard VGA analog input
- Embedded universal AC power supply
- AUTO adjustment optimizes picture quality
- sRGB compliance
- Intelligent cable management keeps desk clear of unsightly wires



17" TFT LCD SXGA monitor



Technical Specifications

LCD panel

- Type TFT LCD
- Screen size 17 inch / 43.2 cm
- Pixel pitch 0.264 x 0.264mm
- LCD panel type 1280 x 1024 pixels
R.G.B vertical stripe
Anti-glare polarizer; hard coated
- Effective viewing area 337.9 x 270.3mm
- Display colors 16.7M colors

Scanning

- Vertical refresh rate 56~76 Hz
- Horizontal frequency 30~82 KHz

Video

- Video dot rate (Max.) 135 MHz
- Input impedance
 - video 75 ohm
 - Sync 2K ohm
- Input signal levels 0.7Vpp
- Sync input signal
 - Separate sync
 - Composite sync
 - Sync on green
- Sync polarities Positive and negative
- Video interface Analog (D-Sub) input

Optical characteristics

- Contrast ratio 400 (typ.)
- Brightness 250 cd/m² (typ.)
- Peak contrast angle 6 o'clock
- White chromaticity
 - x: 0.283 y: 0.297 (at 9300°K)
 - x: 0.313 y: 0.329 (at 6500°K)
- Viewing angle (C/R >5)
 - Upper ≥ 80° (typ.)
 - Lower ≥ 80° (typ.)
 - Left ≥ 70° (typ.)
 - Right ≥ 70° (typ.)
- Response time ≤ 25 ms (typ.)

Resolution & preset modes

- Maximum 1280x1024 at 75Hz
 - Recommended 1280x1024 at 60Hz
 - 33 user definable modes
 - 15 factory preset modes
- | | H.freq (KHz) | V.freq (Hz) |
|-------------|--------------|-------------|
| 640 x 350 | 31.5 | 70 |
| 720 x 400 | 31.5 | 70 |
| 640 x 480 | 31.5 | 60 |
| 640 x 480 | 35.0 | 67 |
| 640 x 480 | 37.5 | 75 |
| 800 x 600 | 35.2 | 56 |
| 800 x 600 | 37.9 | 60 |
| 800 x 600 | 46.9 | 75 |
| 832 x 624 | 49.7 | 75 |
| 1024 x 768 | 48.4 | 60 |
| 1024 x 768 | 60.0 | 75 |
| 1152 x 870 | 69.0 | 75 |
| 1152 x 900 | 71.8 | 76 |
| 1280 x 1024 | 63.9 | 60 |
| 1280 x 1024 | 80.0 | 75 |
- (Interlace mode is not applicable)

Plug and play compatibility

- Display data channel DDC 2B (VESA)
- Microsoft® Windows® 95/98/ Me & 2000/ XP compatible

Power management

- Complies with EPA Energy Star and NUTEK specifications
- Typical operation 40W (typical)
- Sleep mode 1W

Low-emission characteristics

- Complies with TCO 99, MPRII and prEN50279 (so call MPRIII) specifications

Monitor controls and functions

- Side
 - Power on/off - Tact Switch
 - OK - Tact Switch
 - Auto - Tact Switch
 - Up/Down - Tact Switch
(Brightness)
 - Left / Right - Tact Switch
- LED indicator
 - Green power on
 - Amber power save/OFF mode
 - Flashing Green new mode

Connections and cables

- Connections on monitor body
 - Video 15-pin D-sub (analog) connector
 - DC output 12V, 6.5mm DC connector
 - Power IEC/CEE-22 type male power inlet
- Cables D-Sub video cable, Power cable

Regulatory approvals

- TUV/GS, TUV-Ergo
- FCC-B, UL, CSA
- SEMKO
- prEN50279 Low Emission
- CE Mark
- NUTEK, Energy Star
- TCO '99

Physical specifications

- Dim. incl. base (WxHxD) 399 x 398.2 x 197.2 mm
- Dim. excl. base (WxHxD) 399 x 335.1 x 66.1 mm
- Tilt -5°~20°
- Net Weight 4.2 Kg
- Power supply 100 - 240 VAC, 50/60 Hz
- Power consumption 40 W* (typ.)
- Temperature (operating) +5°C to +35°C
- Temperature (storage) -20°C to +60°C
- Relative humidity 20% to 80%
- System MTBF 50K hrs (excluding CCFL 40K hrs)

* Resolution 1280x1024, standard size, contrast max., brightness 50%, 9300°K, Full white pattern.

We recommend using 1280 x 1024 at 60Hz non-interlaced mode for the best picture quality
As an Energy Star partner, Philips has determined that this product meets the Energy Star guidelines for energy efficiency. Microsoft and Windows are registered trademarks of Microsoft Corporation
Macintosh is a registered trademark of Apple Computer, Inc.

All data subject to change without notice
Release date: June 2003
www.philips.com

