



Philips Brilliance
LCD monitor with
SoftBlue Technology

P Line

24 (23.8" / 60.5 cm diag.)
1920 x 1080 (Full HD)

Brilliance

241P6EPJEB



Brilliant performance from every angle

with a full HD IPS display

Designed for you, the new Philips Brilliance monitor features new SoftBlue LED Technology for easy on the eyes brilliant colorful images and maximum productivity.

Designed for people

- SoftBlue Technology easy on the eyes and maintains color
- Less eye fatigue with Flicker-free technology
- SmartErgoBase enables people-friendly ergonomic adjustments
- Low bezel-to-table height for maximum reading comfort

Brilliant performance

- IPS-ADS wide-view technology for image and color accuracy
- SmartImage presets for easy optimized image settings

Easy to experience

- Built-in stereo speakers for multimedia
- USB 3.0 Hub for convenient access and fast charging
- SmartConnect with HDMI, MHL, DisplayPort, DVI, and VGA

Sustainable Eco-design

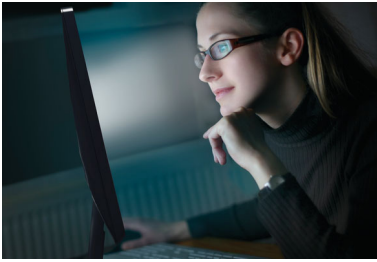
- LightSensor for the perfect brightness with minimal power
- PowerSensor saves up to 80% energy costs



PHILIPS

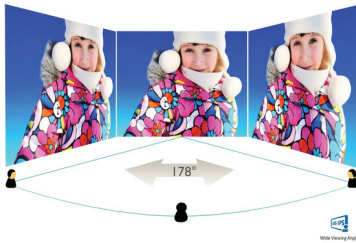
Highlights

SoftBlue Technology



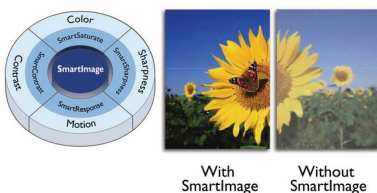
SoftBlue LED technology uses a smart technology to reduce harmful shortwave blue light without affecting the color or image of the display. SoftBlue LED technology is certified by international testing organizations TUV Rheinland to reduce harmful blue light.

IPS-ADS technology



IPS-ADS displays use an advanced technology which gives you extra wide viewing angles of 178/178 degree, making it possible to view the display from almost any angle. Unlike standard TN panels, IPS-ADS displays give you remarkably crisp images with vivid colors, making it ideal not only for Photos, movies and web browsing, but also for professional applications which demand color accuracy and consistent brightness at all times.

SmartImage



SmartImage is an exclusive leading edge Philips technology that analyzes the content displayed

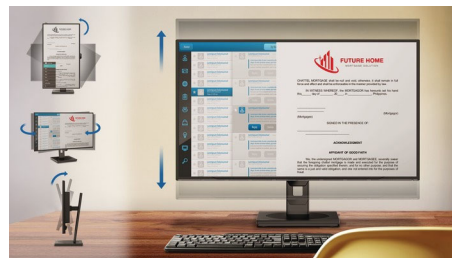
on your screen and gives you optimized display performance. This user friendly interface allows you to select various modes like Office, Photo, Movie, Game, Economy etc., to fit the application in use. Based on the selection, SmartImage dynamically optimizes the contrast, color saturation and sharpness of images and videos for ultimate display performance. The Economy mode option offers you major power savings. All in real time with the press of a single button!

Flicker-free technology



Due to the way brightness is controlled on LED-backlit screens, some users experience flicker on their screen which causes eye fatigue. Philips Flicker-free Technology applies a new solution to regulate brightness and reduce flicker for more comfortable viewing.

SmartErgoBase



The SmartErgoBase is a monitor base that delivers ergonomic display comfort and provides cable management. The base can swivel, tilt and rotate to various angles to ensure maximum comfort. The height adjustable stand guarantees the optimal viewing level, reducing the physical strains of a long workday, while cable management reduces cable clutter and keeps the workspace neat and professional.

Built-in stereo speakers



A pair of high quality stereo speakers built into a display device. It can be visible front firing, or invisible down firing, top firing, rear firing, etc depending on model and design.

SmartConnect

With a plethora of connectivity, these Philips displays come equipped with multi connections like VGA, DVI-D, DisplayPort, universal HDMI connector, MHL enabling you to enjoy high resolution uncompressed video and audio content. Regardless of what source you use, you can rest assured that this Philips display will ensure your investment is not made obsolete any time soon!



TUV Certified Low Blue Light

Philips displays with SoftBlue LED technology are certified by TUV Rheinland Low Blue Light testing standard (2PFG) to reduce harmful blue light.



Specifications

Picture/Display

- LCD panel type: IPS-ADS LCD
- Backlight type: W-LED system
- Panel Size: 23.8 inch / 60.5 cm
- Effective viewing area: 527.04 (H) x 296.46 (V)
- Display Screen Coating: Anti-Glare, 3H, Haze 25%
- Aspect ratio: 16:9
- Optimum resolution: 1920 x 1080 @ 60Hz
- Response time (typical): 5 ms (Gray to Gray)*
- Brightness: 250 cd/m²
- Contrast ratio (typical): 1,000:1
- SmartContrast: 20,000,000 :1
- Pixel pitch: 0.2745 x 0.2745 mm
- Viewing angle: 178° (H) / 178° (V), @ C/R > 10
- Picture enhancement: SmartImage
- Display colors: 16.7 M
- Scanning Frequency: 30 - 83 kHz (H) / 56 - 76 Hz (V)
- MHL: 1080P @ 60Hz
- SoftBlue
- sRGB

Connectivity

- Signal Input: VGA (Analog), DVI-D (digital, HDCP), DisplayPort x 1, MHL-HDMI (digital, HDCP)
- USB: USB 3.0x4 (1 w/fast charging)*
- Sync Input: Separate Sync, Sync on Green
- Audio (In/Out): PC audio-in, Headphone out

Convenience

- Built-in Speakers: 2 W x 2
- User convenience: SmartImage, Volume, PowerSensor, Menu, Power On/Off
- OSD Languages: Brazil Portuguese, Czech, Dutch, English, Finnish, French, German, Greek, Hungarian, Italian, Japanese, Korean, Polish, Portuguese, Russian, Simplified Chinese, Spanish, Swedish, Traditional Chinese, Turkish, Ukrainian
- Other convenience: Kensington lock, VESA mount (100x100mm)
- Plug & Play Compatibility: DDC/CI, Mac OS X, sRGB, Windows 10 / 8.1 / 8 / 7

Stand

- Height adjustment: 130 mm
- Pivot: 90 degree
- Swivel: -175/+175 degree
- Tilt: -5/20 degree

Power

- ECO mode: 13.9 W (typ.)

- On mode: 19.14 W (EnergyStar 6.0 test method)
- Standby mode: < 0.3 W (typ.)
- Off mode: Zero watts with AC switch
- Power LED indicator: Operation - White, Standby mode- White (blinking)
- Power supply: 100-240VAC, 50-60Hz, Built-in

Dimensions

- Product with stand(max height): 563 x 511 x 257 mm
- Product without stand (mm): 563 x 351 x 53 mm
- Packaging in mm (WxHxD): 619 x 525 x 184 mm

Weight

- Product with stand (kg): 6.47 kg
- Product without stand (kg): 3.98 kg
- Product with packaging (kg): 9.13 kg

Operating conditions

- Temperature range (operation): 0°C to 40°C °C
- Temperature range (storage): -20°C to 60°C °C
- Relative humidity: 20%-80 %
- Altitude: Operation: +12,000ft (3,658m), Non-operation: +40,000ft (12,192m)
- MTBF (demonstrated): 70,000 hrs (excluded backlight)

Sustainability

- Environmental and energy: PowerSensor, LightSensor, EnergyStar 6.0, RoHS
- Recyclable packaging material: 100 %
- Post consumer recycled plastic: 65%
- Specific Substances: PVC / BFR free housing, Mercury free

Compliance and standards

- Regulatory Approvals: CE Mark, FCC Class B, SEMKO, cETLus, CU-EAC, TUV/GS, TUV Ergo, EPA, PSB, WEEE, RCM, UKRAINIAN, CECP, ICES-003, TUV Cert. - blue light cut-off

Cabinet

- Front bezel: Black
- Rear cover: Black
- Foot: Black
- Finish: Texture

What's in the box?

- Monitor with stand
- Cables: VGA, DVI, DP, Audio, Power
- User Documentation



Issue date 2022-05-19

Version: 11.0.1

12 NC: 8670 001 27125
EAN: 87 12581 73446 6

© 2022 Koninklijke Philips N.V.
All Rights reserved.

Specifications are subject to change without notice.
Trademarks are the property of Koninklijke Philips N.V.
or their respective owners.

www.philips.com

* This Philips display is MHL certified. However, in case your MHL device does not connect or work correctly, check with your MHL device FAQ or vendor directly for direction. The policy of your device manufacturer may require you to purchase their brand specific MHL cable or adapter in order to work

* Requires optional MHL certified mobile device and MHL cable. (not included) Please check with your MHL device vendor for compatibility.

* Standby/Off energy saving of ErP is not applicable for the MHL charging functionality

* For complete list of MHL-enabled products refer to www.mhlconsortium.org

* "IPS" word mark / trademark and related patents on technologies belong to their respective owners.

* Response time value equal to SmartResponse