



Philips Brilliance  
LCD monitor with Clinical  
D-image

Clinical review display  
27" (68.6 cm)  
1920 x 1080 (2 MP)

**Brilliance**



**C271P4QPJEW**

## Clinical Review Display

with Brilliant Images

This Philips display is ideal for everyday clinical care environment. D-image preset gives you consistent DICOM grayscale medical images. Its medical grade power supply ensures basic safety. Anti-microbial housing inhibits bacterial growth.

### Clinical Review

- Clinical D-image preset for DICOM part 14 Grayscale images
- SmartImage Clinic for common display settings
- AntiMicrobial housing actively inhibits bacterial growth
- Medical grade power supply ensures safety with low emission
- Design complements clinical environment

### Brilliant performance

- AMVA LED for wide-view super-high contrast, vivid images
- PowerSensor saves up to 80% energy costs
- Built-in stereo speakers for multimedia
- DisplayPort offers audio and video over a single, long cable
- USB Hub with 4 ports for easy connections
- HDMI ensures universal digital connectivity

### Designed for people

- SmartErgoBase enables people-friendly ergonomic adjustments

**PHILIPS**

# Highlights

## Clinical D-image

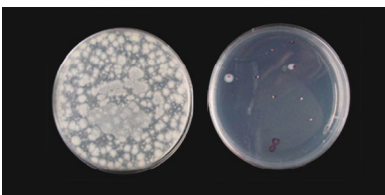


Monitors must show medical images consistently with high quality to achieve reliable interpretations. The rendering of medical Grayscale images on standard monitors is mostly inconsistent at best, making them unsuitable for usage in a clinical environment. Philips clinical review displays with clinical D-image preset are factory calibrated to give DICOM part 14 compatible Grayscale standard display performance. By using high quality LCD panels with LED technology, Philips offers you consistent and reliable performance at an affordable price point. Further info on <http://medical.nema.org/>

## SmartImage Clinic

SmartImage is an exclusive, leading edge Philips technology that analyzes the content displayed on your screen, and based on different applications/images displayed on a monitor, SmartImage optimizes display content by dynamically adjusting brightness, contrast, color and sharpness in real time.

## AntiMicrobial housing



Before After 24 hours



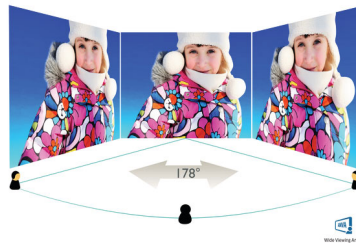
Germs have become a growing problem in hospitals and clinical environments worldwide as they can cause life-threatening infections. Philips clinical review displays take care of this challenge by using JIS Z2801 compliant

antimicrobial additive in its housing material making it an integral part of the display housing. Your well being along with your patients is now assured by this protective shield that impedes the growth of most common microorganisms such as "Staphylococcus aureus (Gastroenteritis)", "Escherichia coli (E Coli)" and "Klebsiella (Pneumonia)", for example.

## Medical grade power supply

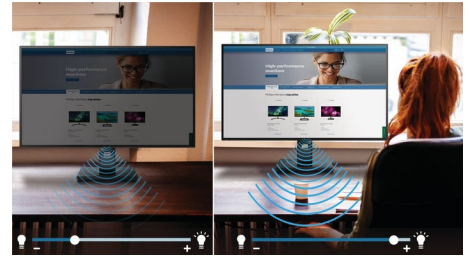
Basic safety, essential performance and reliability are essential requirements in a professional clinical environment. Unlike standard displays, Philips clinical review displays employ special medical grade power supplies in order to meet these requirements. It complies with EN/IEC 60601-1 standard ensuring basic safety and essential performance. Additionally it also complies with EN/IEC 60601-1-2 collateral standard for medical grade electromagnetic tests and compatibility. Many countries, hospitals and clinics mandate compliance to these standards as a requirement.

## AMVA LED display



Philips AMVA LED display uses an advanced multi-domain vertical alignment technology which gives you super-high static contrast ratios for extra vivid and bright images. While standard office applications are handled with ease, it is especially suitable for photos, web-browsing, movies, gaming, and demanding graphical applications. It's optimized pixel management technology gives you 178/178 degree extra wide viewing angle, resulting in crisp images even in 90 degree pivot mode

## PowerSensor

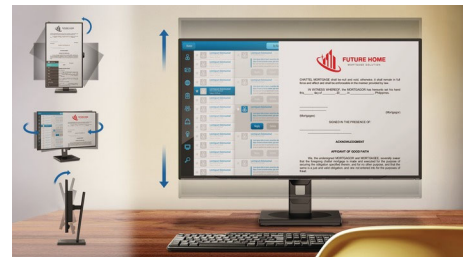


PowerSensor is a built-in 'people sensor' that transmits and receives harmless infrared signals to determine if user is present and automatically reduces monitor brightness when user steps away from the desk, cutting energy costs by up to 80 percent and prolonging monitor life

## DisplayPort

DisplayPort is a digital link from PC to Monitor without any conversion. With higher capabilities than DVI standard, it is fully capable to support up to 15meter cables and 10.8 Gbps/sec data transfer. With this high performance and zero latency, you get the fastest imaging and refresh rates - making DisplayPort the best choice for not only general office or home use, but also for the demanding media and more. It also keeps interoperability in mind via use of various adapters.

## SmartErgoBase



The SmartErgoBase is a monitor base that delivers ergonomic display comfort and provides cable management. The base's people-friendly height, swivel, tilt and rotation angle adjustments position the monitor for maximum comfort that can ease the physical strains of a long workday; cable management reduces cable clutter and keeps the workspace neat and professional.



# Specifications

## Picture/Display

- LCD panel type: AMVA LCD
- Backlight type: W-LED system
- Panel Size: 27 inch / 68.6 cm
- Effective viewing area: 597.6 (H) x 336.15 (V)
- Aspect ratio: 16:9
- Optimum resolution: 1920 x 1080 @ 60Hz
- Response time (typical): 12 ms
- Brightness: 300 cd/m<sup>2</sup>
- Contrast ratio (typical): 5,000:1
- Pixel pitch: 0.311 x 0.311 mm
- Viewing angle: 178° (H) / 178° (V), @ C/R > 10
- Display colors: 16.7 M
- Scanning Frequency: 30 - 83 kHz (H) / 56 - 75 Hz (V)
- sRGB
- Picture enhancement: SmartImage Clinic
- DICOM: Clinical D-image, DICOM part-14
- DICOM calibrated brightness: 260 cd/m<sup>2</sup>

## Connectivity

- Signal Input: DisplayPort 1.2, HDMI, DVI-D (digital, HDCP), VGA (Analog)
- USB: USB 2.0 x 4
- Sync Input: Separate Sync, Sync on Green
- Audio (In/Out): PC audio-in, Headphone out
- Built-in speakers: 2Wx2

## Convenience

- User convenience: SmartImage Clinic, PowerSensor, Menu, Power On/Off, 4:3 / Wide
- Control software: SmartControl Premium
- OSD Languages: English, French, German, Italian, Portuguese, Russian, Simplified Chinese, Spanish
- Other convenience: Kensington lock, VESA mount (100x100mm)
- Plug & Play Compatibility: DDC/CI, Mac OS X, sRGB, Windows 8/7/Vista

## Stand

- Height adjustment: 150 mm
- Pivot: 90 degree
- Swivel: -65/65 degree
- Tilt: -5/20 degree

## Power

- On mode: 26 W (typ.) (EnergyStar 6.0 test method)

- Standby mode: 0.4 W (typ.)
- Off mode: Zero watts with Zero switch
- Power LED indicator: Operation - White, Standby mode- White (blinking)
- External power supply: 100-240VAC, 50-60Hz (Medical cert.: IEC60601-1 / EN60601-1)

## Dimensions

- Product with stand(max height): 639 x 577 x 191 mm
- Product without stand (mm): 639 x 405 x 64 mm
- Packaging in mm (WxHxD): 750 x 234 x 490 mm

## Weight

- Product with stand (kg): 7.90 kg
- Product without stand (kg): 5.10 kg
- Product with packaging (kg): 10.35 kg

## Operating conditions

- Temperature range (operation): 0°C to 40°C °C
- Temperature range (storage): -20°C to 60°C °C
- Relative humidity: 20%-80 %
- Altitude: Operation: +12,000ft (3,658m), Non-operation: +40,000ft (12,192m)
- MTBF: 30,000 hour(s)

## Anti-Microbial

- Anti-microbial housing
- JISZ2801Anti-microbial housing

## Sustainability

- Environmental and energy: EnergyStar 6.0, PowerSensor, RoHS
- Recyclable packaging material: 100 %
- Specific Substances: PVC / BFR free housing, Mercury free

## Compliance and standards

- EMC: IEC/EN60601-1-2, CE Mark
- Safety: IEC/EN60601-1, CE Mark, GOST
- Ergonomic/Others: JIS Z2801, Energy Star, TUV Ergo, TUV/GS, ISO 13485 certified, WEEE

## Cabinet

- Front bezel: White
- Rear cover: White
- Foot: White
- Finish: Texture



Issue date 2022-04-21

Version: 4.0.1

12 NC: 8670 001 11546  
EAN: 87 12581 71072 9

© 2022 Koninklijke Philips N.V.  
All Rights reserved.

Specifications are subject to change without notice.  
Trademarks are the property of Koninklijke Philips N.V.  
or their respective owners.

[www.philips.com](http://www.philips.com)

\* Please note: This display is not certified to be used in patient vicinity.  
Any use for primary diagnostics is the sole responsibility of the hospital or clinic operator only.  
\* DICOM is the registered trademark of the NEMA for its standards publications relating to digital communications of medical information.  
\* "AMVA" word mark / trademark and related patents on technologies belong to their respective owners.