



Philips  
LCD display

### E Line

32 (viewable 31.5" / 80 cm)  
1920 x 1080 (Full HD)

323E7QDAB

## Expand your experience

Expand your viewing experience with this big Philips display. With this expansive 32" class full HD display you can truly immerse yourself into the game, or even give yourself needed space to spread out your work.

#### **Elegant Design**

- Elegant, slim design complements your home decor
- Superb glossy finish enhance your home decoration
- EasySelect menu toggle key for quick on-screen menu access

#### **Experience immersive multimedia**

- HDMI-ready for Full HD entertainment
- Built-in stereo speakers for multimedia

#### **Superb Picture Quality**

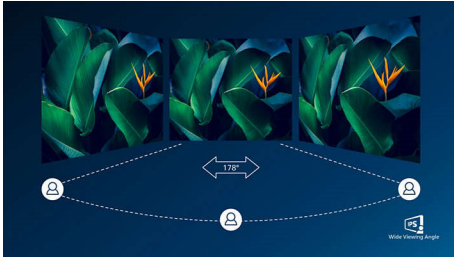
- SmartImage Lite for easy optimized image settings
- SmartContrast for deep black level details
- 16:9 Full HD display for crisp detailed images
- IPS LED wide view technology for image and color accuracy
- Less eye fatigue with Flicker-free technology
- Expansive 31.5-inch brilliant display

# PHILIPS

LCD display  
E Line 32 (viewable 31.5" / 80 cm), 1920 x 1080 (Full HD)

# Highlights

## IPS technology



IPS displays use an advanced technology which gives you extra wide viewing angles of 178/178 degree, making it possible to view the display from almost any angle. Unlike standard TN panels, IPS displays gives you remarkably crisp images with vivid colors, making it ideal not only for Photos, movies and web browsing, but also for professional applications which demand color accuracy and consistent brightness at all times.

## 16:9 Full HD display



Picture quality matters. Regular displays deliver quality, but you expect more. This display features enhanced Full HD 1920 x 1080 resolution. With Full HD for crisp detail paired with high brightness, incredible contrast and realistic colors expect a true to life picture.

## Flicker-free technology



Due to the way brightness is controlled on LED-backlit screens, some users experience flicker on their screen which causes eye fatigue. Philips Flicker-free Technology applies a new solution to regulate brightness and reduce flicker for more comfortable viewing.

## SmartContrast



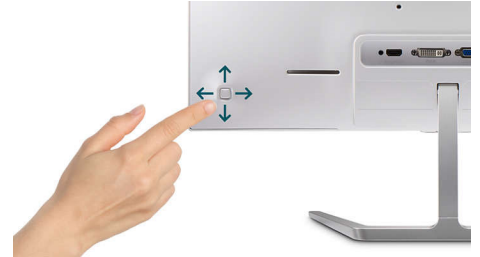
SmartContrast is a Philips technology that analyzes the contents you are displaying, automatically adjusting colors and controlling backlight intensity to dynamically enhance contrast for the best digital images and videos or when playing games where dark hues are displayed. When Economy mode is selected, contrast is adjusted and backlighting fine-tuned for just-right display of everyday office applications and lower power consumption.

## SmartImage Lite

SmartImage Lite is an exclusive, leading edge Philips technology that analyzes the content displayed on your screen. Based on a scenario you select, SmartImage Lite dynamically enhances the contrast, color saturation and sharpness of images and videos for ultimate display performance - all in real time with the press on a single button.

323E7QDAB/27

## EasySelect Menu Toggle Key



The discreetly placed EasySelect Menu Toggle Key allows you to make quick and easy adjustments to monitor settings in the On-Screen Display menu.

## HDMI Ready



HDMI-ready

An HDMI-ready device has all the required hardware to accept High-Definition Multimedia Interface (HDMI) input. A HDMI cable enables high-quality digital video and audio all transmitted over a single cable from a PC or any number of AV sources (including set-top boxes, DVD players, A/V receivers and video cameras).

## Built-in stereo speakers



A pair of high quality stereo speakers built into a display device. It can be visible front firing, or invisible down firing, top firing, rear firing, etc depending on model and design.



# Specifications

## Connectivity

- Signal Input: VGA (Analog), DVI-D (digital, HDCP), HDMI (digital, HDCP)
- Sync Input: Separate Sync, Sync on Green
- Audio (In/Out): PC audio-in, Headphone jack

## Picture/Display

- Panel Size: 31.5 inch / 80 cm
- Aspect ratio: 16:9
- LCD panel type: IPS technology
- Backlight type: W-LED system
- Pixel pitch: 0.364 x 0.364 mm
- Optimum resolution: 1920 x 1080 @ 60 Hz
- Brightness: 250 cd/m<sup>2</sup>
- Display colors: 16.7 M
- Contrast ratio (typical): 1000:1
- SmartContrast: 20,000,000:1
- Response time (typical): 5 ms (Gray to Gray)\*
- Viewing angle: 178° (H) / 178° (V), @ C/R > 10
- Picture enhancement: SmartImage Lite
- Effective viewing area: 698.4 (H) x 392.85 (V)
- Scanning Frequency: 30 - 83 kHz (H) / 56 -76 Hz (V)
- sRGB
- Flicker-free

## Convenience

- Built-in Speakers: 5 W x 2
- Plug & Play Compatibility: DDC/CI, Mac OS X, sRGB, Windows 10 / 8.1 / 8 / 7
- User convenience: Power On/Off, Menu/OK, Volume/Down, Input/Up, SmartImage lite
- OSD Languages: Brazil Portuguese, Czech, Dutch, English, Finnish, French, German, Greek, Hungarian, Italian, Japanese, Korean, Polish, Portuguese, Russian, Simplified Chinese, Spanish, Swedish, Traditional Chinese, Turkish, Ukrainian
- Other convenience: Kensington lock, VESA mount (100x100mm)

## Stand

- Tilt: -5/10 degree

## Power

- Power supply: 100-240VAC, 50-60Hz, Internal
- Off mode: 0.3 W (typ.)
- On mode: 45.7 W (typ.), 66.6 W (max.)
- Standby mode: 0.5 W (typ.)
- Power LED indicator: Operation - White, Standby mode- White (blinking)

## Dimensions

- Product with stand (mm): 730 x 522 x 216 mm
- Product with stand in inch: 28.7 x 20.6 x 8.5 inch
- Packaging in mm (WxHxD): 790 x 625 x 139 mm
- Product without stand (mm): 730 x 431 x 64 mm
- Packaging in inch (WxHxD): 31.1 x 24.6 x 5.5 inch
- Product without stand in inch: 28.7 x 17.0 x 2.5 inch

## Weight

- Product with packaging (kg): 8.85 kg
- Product with stand (kg): 6.91 kg
- Product with packaging (lb): 19.47 lb
- Product with stand (lb): 15.20 lb
- Product without stand (kg): 5.89 kg
- Product without stand (lb): 12.96 lb

## Operating conditions

- Altitude: Operation: +12,000ft (3,658m), Non-operation: +40,000ft (12,192m)
- Temperature range (operation): 0 to 40 °C
- MTBF: 50,000 hrs (excluding backlight) hour(s)
- Relative humidity: 20%-80 %
- Temperature range (storage): -20 to 60 °C

## Sustainability

- Environmental and energy: RoHS, Mercury Free
- Recyclable packaging material: 100 %

## Compliance and standards

- Regulatory Approvals: CE Mark, FCC Class B, CU, SASO, KUCAS, ETL, TUV/ISO9241-307, WEEE

## Cabinet

- Color: Black
- Finish: Glossy



Issue date 2024-03-25

Version: 2.0.2

UPC: 6 09585 25053 6

© 2024 Koninklijke Philips N.V.  
All Rights reserved.

Specifications are subject to change without notice.  
Trademarks are the property of Koninklijke Philips N.V.  
or their respective owners.

[www.philips.com](http://www.philips.com)

\* "IPS" word mark / trademark and related patents on technologies belong to their respective owners.  
\* HDMI cables vary depending on region and models.  
\* Response time value equal to SmartResponse