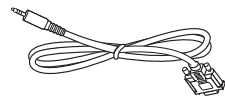
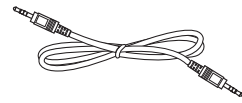


Power cord



RS232



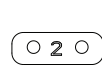
RS232 Daisy Chain Cable



Logo



x 8



x 2



x 1



SD card cover



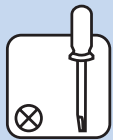
M3



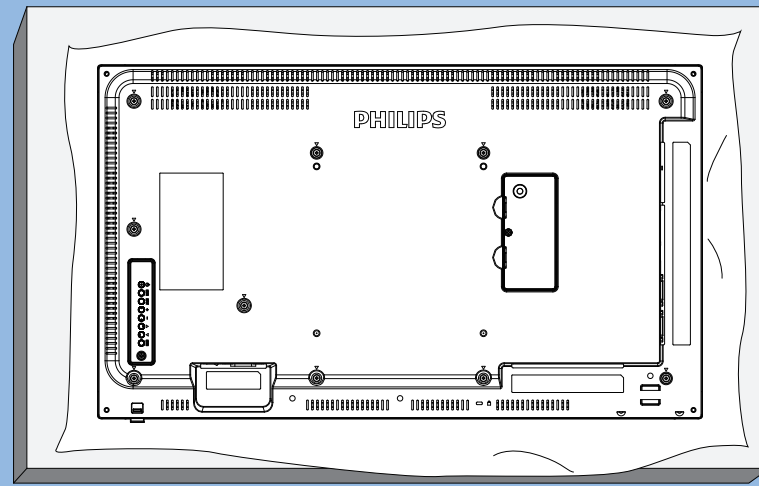
M2

* Differences according to regions.

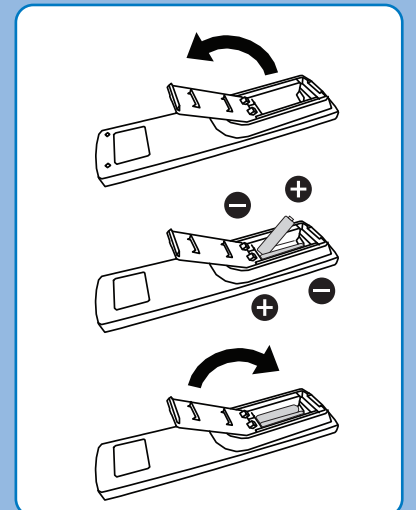
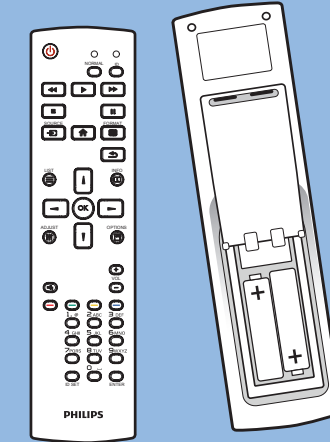
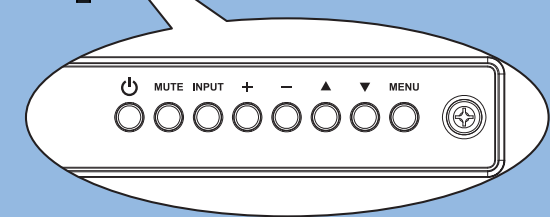
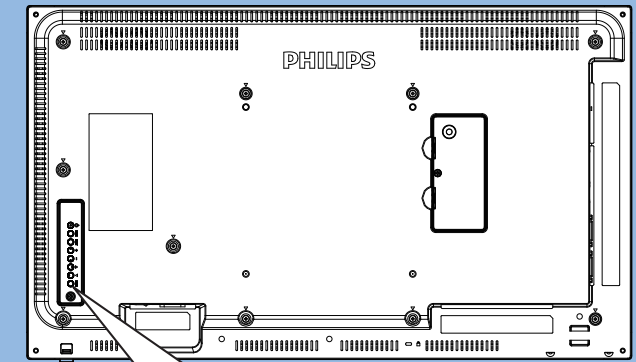
Display design and accessories may differ from those illustrated above.



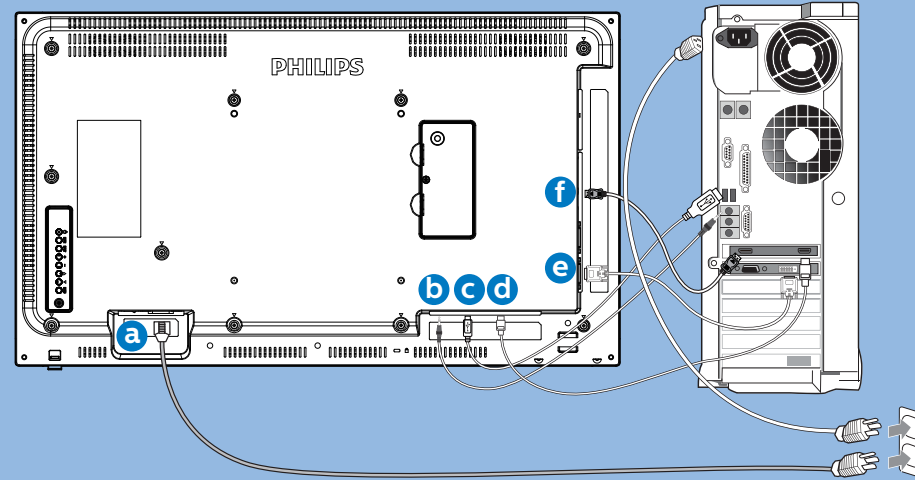
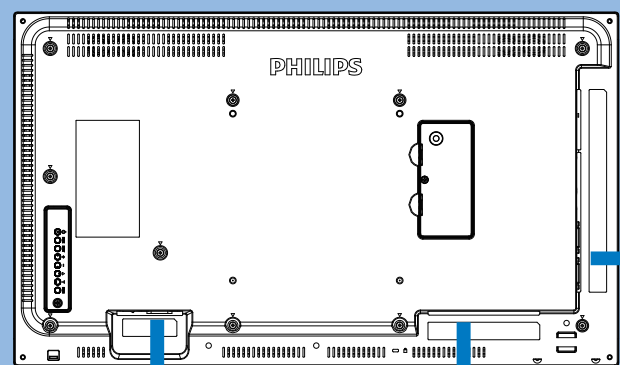
1



2



3



AC IN



AUDIO



Touch USB



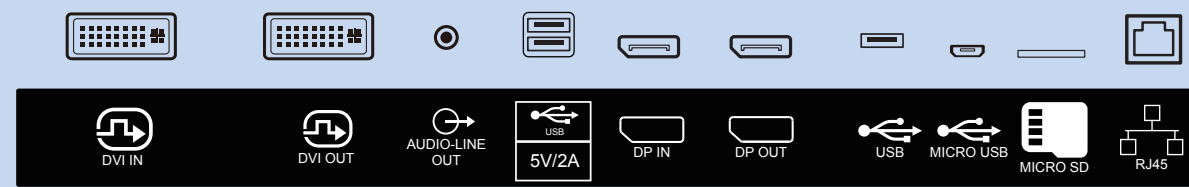
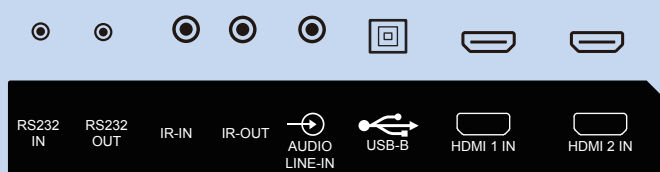
HDMI



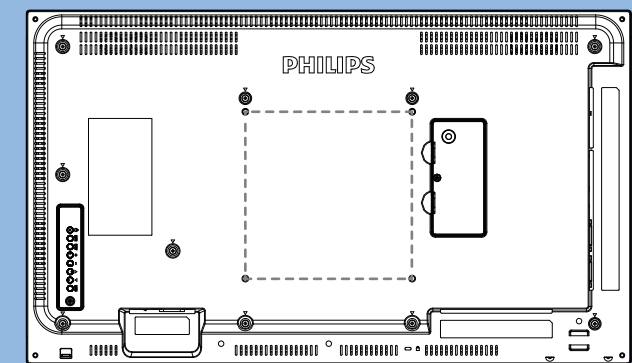
DVI



DP

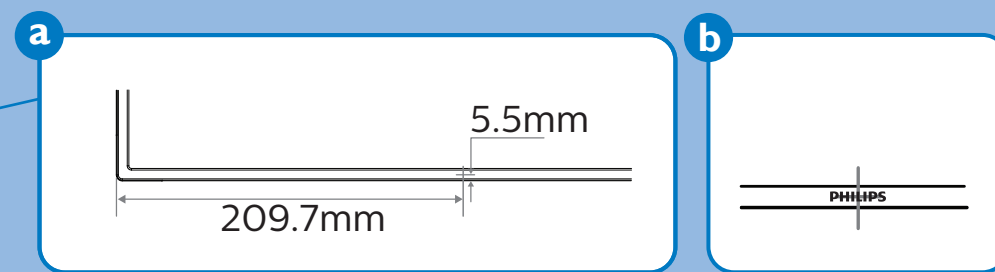
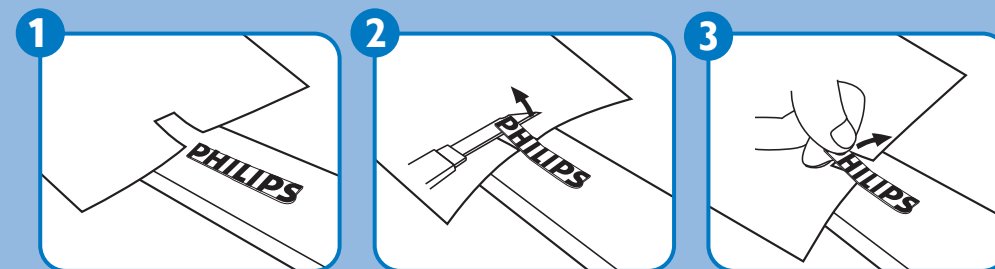
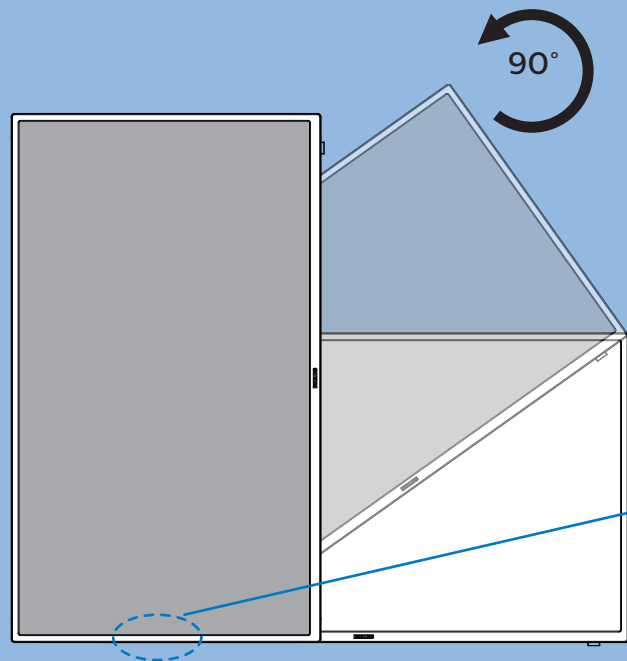


4



M6 * (10+X) mm
(X=Thickness of Wall mount BKT)
32BDL4051D: 200mmx200mm

5



PHILIPS

D line

32BDL4051D



Quick Start



Please check out the website below for more product information.
www.philips.com/signagesolutions-support



Envision Peripherals Inc.
 490 N McCarthy Blvd, Suite #120
 Milpitas, CA 95035
 USA

© 2019 Koninklijke Philips N.V. All rights reserved.
 Philips and the Philips Shield Emblem are registered
 trademarks of Koninklijke Philips N.V. and are used under
 license from Koninklijke Philips N.V.

Specifications are subject to change without notice.

Version: V1.00 2019-07-18



Q41G32M181358A