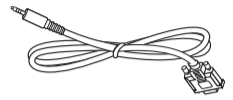


Power cord



RS232 Cable



RS232 Daisy Chain Cable



IR Sensor Cable



Dipole Antenna x2



Logo



SD card cover



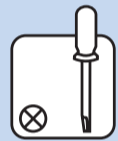
M3



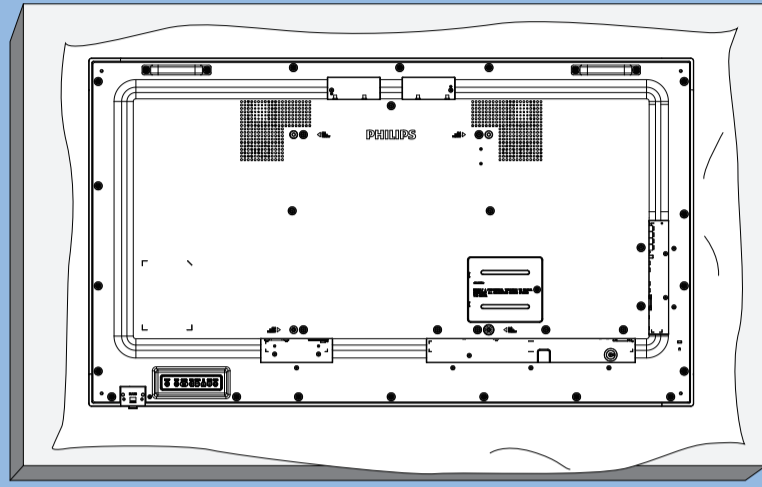
M2

* Differences according to regions.

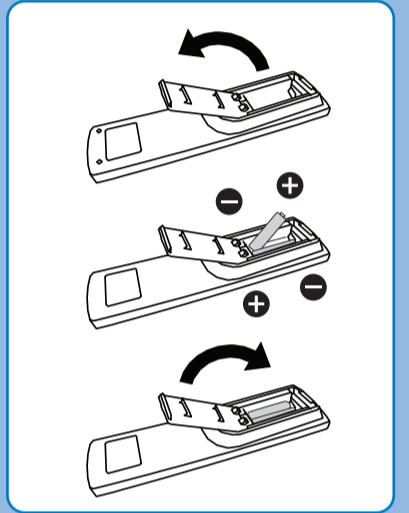
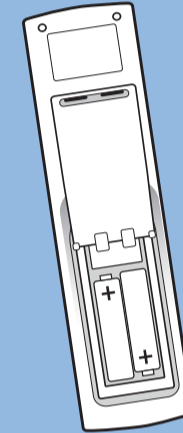
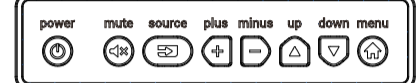
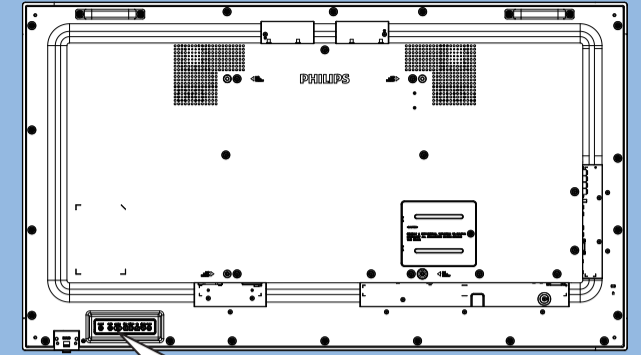
Display design and accessories may differ from those illustrated above.



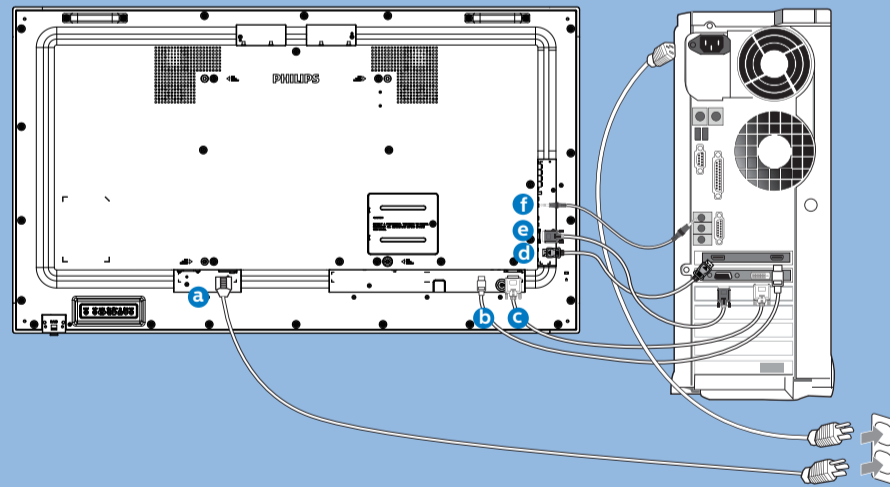
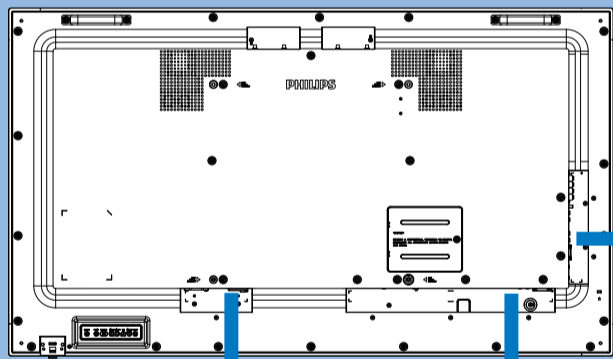
1



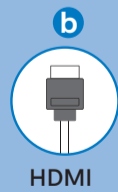
2



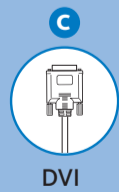
3



AC IN



HDMI



DVI



DP

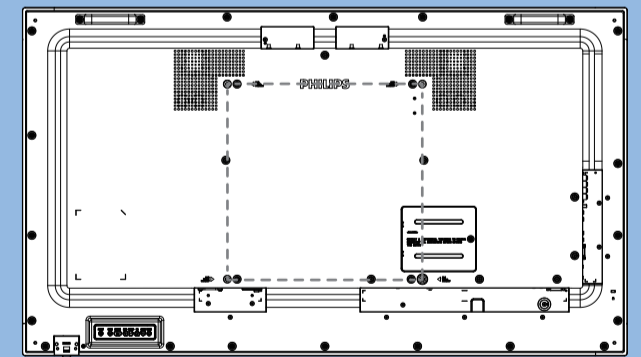


VGA



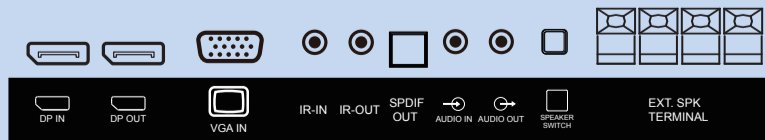
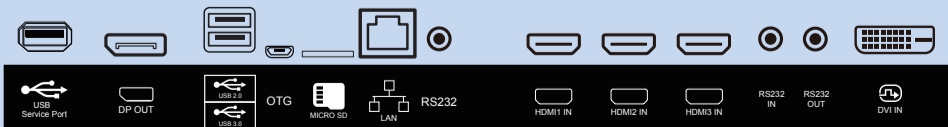
AUDIO

4

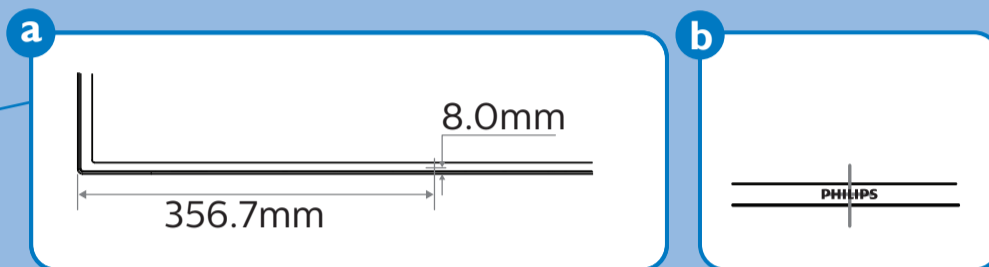
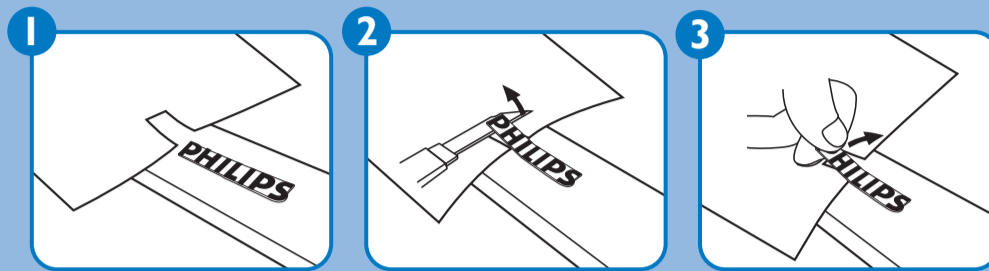
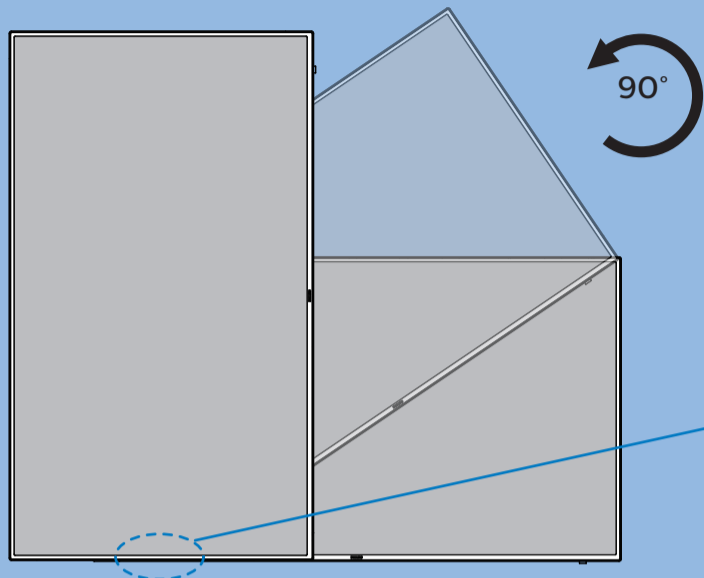


M6 * (10+X) mm
(X=Thickness of Wall mount BKT)

55BDL4150D: 400mmx400mm



5



Quick Start



Please check out the website below for more product information.
www.philips.com/signagesolutions-support



Envision Peripherals Inc.
490 N McCarthy Blvd, Suite #120
Milpitas, CA 95035
USA

© 2019 Koninklijke Philips N.V. All rights reserved.
Philips and the Philips Shield Emblem are registered trademarks of Koninklijke Philips N.V. and are used under license from Koninklijke Philips N.V.

Specifications are subject to change without notice.
Version: V1.00 2019-07-03



Q41G55M181354A