

# PHILIPS

## EVNIA

Full HD gaming  
monitor

Gaming Monitor

Evnia 5000

25 (24.5"/62.2 cm diag.)

1920 x 1080 (Full HD)

25M2N5200P



## Your gaming experience to the utmost

A gaming monitor that has the best of both worlds. With SmartContrast, along with the combination of AMD FreeSync Premium technology and a 280 Hz refresh rate, this product promises fluid and lag-free gaming without compromising on imaging.

### Built for fast action

- 0.5 ms ultra-fast speed for crisp images and smooth gameplay

### Features designed for gamers' needs

- LowBlue mode and Flicker-free easy-on-the eyes viewing
- Tilt, swivel and height-adjust for an ideal viewing position
- EasySelect menu toggle key for quick on-screen menu access
- New OSD features for a much more engaging gaming experience

### Built for fast action

- AMD FreeSync™ Premium; tear free, stutter free, fluid gaming
- Certified NVIDIA® G-SYNC® compatible for smooth, fast gaming
- Low input lag reduces time delay between devices to monitor
- 280 Hz trail-blazing refresh rate for smooth gameplay

### Immersive visuals

- 16:9 Full HD display for crisp, detailed images
- SmartContrast for rich black details

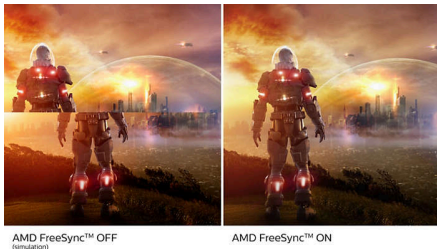
# Gaming Monitor

Full HD gaming monitor

25M2N5200P/01

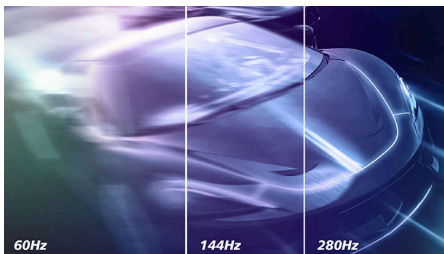
## Highlights

### AMD FreeSync™ Premium



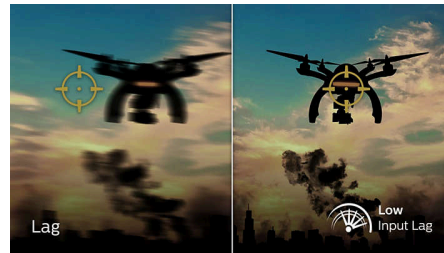
Gaming shouldn't be a choice between choppy gameplay or broken frames. AMD FreeSync™ Premium equips serious gamers with a fluid, tear-free gameplay experience at peak performance. There are no compromises, game confidently with a high refresh rate, low framerate compensation and low latency.

### Accelerated 280 Hz refresh rate



The Philips Evnia 280 Hz display takes your gaming experience to new dimensions. The low input lag coupled with variable refresh rate technology gives you an immersive gaming advantage. Plus, our wide-view angle panel with high resolution provides a realistic gaming experience with unsurpassed colour accuracy. Focus on what matters as the adjustable stand gives you the comfort you deserve and flicker-free technology makes for a viewing experience that is easy on the eyes, so you can continue gaming without health worries.

### Low input lag



Input lag is the amount of time that elapses between performing an action with connected devices and seeing the result on screen. Low input lag reduces the time delay between entering a command from your devices to monitor, greatly improving play on twitch-sensitive video games, particularly important for playing fast-paced, competitive games.

### 0.5 ms Smart MBR fast response



The Philips Evnia with 0.5 ms Smart MBR effectively eliminates smearing and motion blur, and delivers sharper and more precise visuals to enhance your gaming experience. Fast-moving action and dramatic transitions will be rendered smoothly. It's the best choice for playing thrilling and twitch-sensitive games.

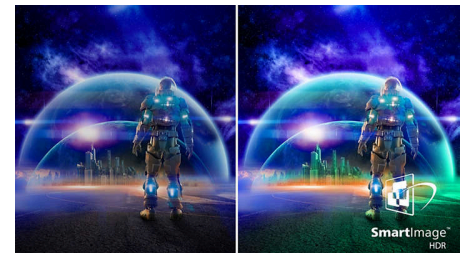
### IPS technology



IPS displays use an advanced technology that gives you extra-wide viewing angles of 178/178 degrees, making it possible to view the

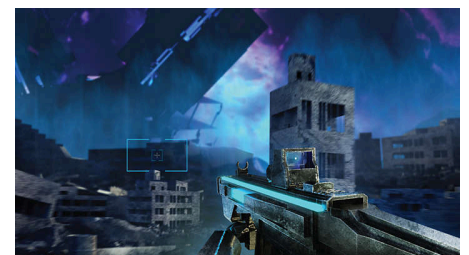
display from almost any angle. Unlike standard TN panels, IPS displays give you remarkably crisp images with vivid colours, making them ideal not only for Photos, movies and web browsing, but also for professional applications that demand colour accuracy and consistent brightness at all times.

### SmartImage HDR



Select one of SmartImage HDR modes to best suit your needs. HDR Game: optimised for playing video games. With brighter white and darker black, the gaming scene is vivid and reveals more details, easily spot enemies hiding in the dark corners and shadows. HDR Movie: ideal for watching HDR movie. Delivers better contrast and brightness for a more realistic and immersive viewing experience. HDR Photo: enhanced red, green and blue for lively visuals. DisplayHDR: VESA DisplayHDR certified\*. Personal: customised settings in picture menu. \*Please refer to specification for HDR grade.

### New features for better gaming



Philips Evnia is equipped with new features in OSD (on-screen display). Smart MBR Sync enables a great pair of MPRT together with Adaptive-sync, eliminating motion blur and ghosting while guaranteeing sharp and speedy gaming visuals with high frame rates. Smart ShadowBoost enhances dark scenes, making more details visible without overexposure. Smart Crosshair lets you never miss a single target.

AMD  
FreeSync  
Premium

280Hz

CompactErgo  
Base

EasySelect

Full HD  
1080p

NVIDIA  
G-SYNC

Flicker-free

HDR

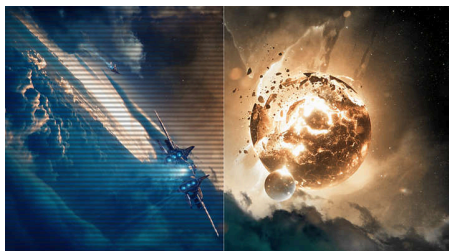
# Gaming Monitor

Full HD gaming monitor

25M2N5200P/01

## Highlights

### LowBlue mode and Flicker-free



Our LowBlue Mode and Flicker-free technology have been developed to reduce eye strain and fatigue often caused by long hours in front of a monitor.

### Compact Ergo Base



The Compact Ergo Base is a people-friendly Philips monitor base that tilts, swivels and height-adjusts so each user can position the monitor for maximum viewing comfort and efficiency.

### EasySelect Menu Toggle Key



The discreetly placed EasySelect Menu Toggle Key allows you to make quick and easy adjustments to monitor settings in the On-Screen Display menu.

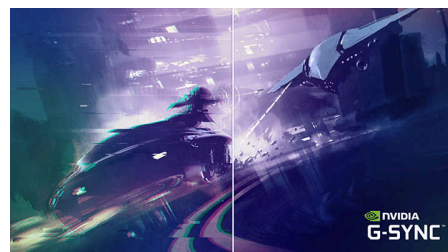
### 16:9 Full HD display



Picture quality matters. Regular displays deliver quality, but you expect more. This display features enhanced Full HD 1920 x 1080

resolution. With Full HD for crisp detail paired with high brightness, incredible contrast and realistic colours, expect a true-to-life picture.

### NVIDIA® G-SYNC® compatible



When playing intense games with high refresh rates, screen tearing may appear without optimal graphics synchronisation. This Philips display is certified as NVIDIA® G-SYNC® compatible, reducing screen tearing and syncing your monitor's refresh rate with your graphic card's output for a smoother gaming experience. Scenes appear instantly, objects look sharper, and gameplay is smooth, giving you a stunning visual experience and a serious competitive edge.

AMD  
FreeSync  
Premium

280Hz

CompactErgo  
Base

EasySelect

Full HD  
1080p

NVIDIA  
G-SYNC

# Specifications

## Picture/Display

**Panel Size:** 24.5 inch/62.2 cm  
**Aspect ratio:** 16:9  
**LCD panel type:** IPS technology  
**Backlight type:** W-LED system  
**Pixel pitch:** 0.2832 x 0.2802 mm  
**Brightness:** 400 cd/m<sup>2</sup>  
**Display colours:** 16.7 M (RGB 8 bit)  
**Colour gamut (typical):** Adobe RGB 86.2%, DCI-P3:83.8%, sRGB: 110%, NTSC 93.4%\*  
**Contrast ratio (typical):** 1000:1  
**SmartContrast:** Mega Infinity DCR  
**Response time (typical):** 1 ms (Grey to Grey)\*  
**Viewing angle:** 178° (H)/178° (V), @ C/R > 10  
**Picture enhancement:** SmartImage game  
**Maximum resolution:** HDMI: 1920 x 1080 @ 240 Hz; DP: 1920 x 1080 @ 280 Hz\* (overclock)  
**Effective viewing area:** 543.744 (H) x 302.616 (V)  
**Scanning Frequency:** HDMI: 30 - 274 kHz (H) / 48 - 240 Hz (V); DP: 30 - 310 kHz (H) / 48 - 280 Hz (V)  
**sRGB**  
**Delta E:** < 2 (sRGB)  
**Flicker-free**  
**Pixel Density:** 89.91 PPI  
**LowBlue Mode**  
**Display Screen Coating:** Anti-Glare, 3H, Haze 25%  
**SmartUniformity:** 93 ~ 105%  
**Low Input Lag**  
**EasyRead**  
**AMD FreeSync™ technology:** Premium G-SYNC  
**HDR:** HDR 10 supported  
**Smart MBR:** 0.5 ms

## Connectivity

**Signal Input:** HDMI 2.0 x 2, DisplayPort 1.4 x 1  
**Sync Input:** Separate Sync  
**Audio (In/Out):** Audio out  
**HDCP:** HDCP 1.4 (HDMI/DisplayPort), HDCP 2.2 (HDMI/DisplayPort)  
**USB Hub:** USB 3.2 Gen 1 / 5 Gbps, USB-B upstream x 1, USB-A downstream x 4 (with 2 for fast charge B.C 1.2)

## Convenience

**Plug and Play Compatibility:** DDC/CI, Mac OS X, sRGB, Windows 11/10/8.1/8  
**User convenience:** Power On/Off, Menu/OK,

Input/Up, Game Settings/Down, SmartImage game/Back  
**OSD Languages:** Brazil Portuguese, Czech, Dutch, English, Finnish, French, German, Greek, Hungarian, Italian, Japanese, Korean, Polish, Portuguese, Russian, Spanish, Simplified Chinese, Swedish, Turkish, Traditional Chinese, Ukrainian  
**Other convenience:** Kensington lock, VESA mount (100 x 100 mm)

## Stand

**Height adjustment:** 130 mm  
**Pivot:** -/+ 90 degree  
**Swivel:** -/+ 30 degree  
**Tilt:** -5/20 degree

## Power

**Power supply:** Internal, 100–240 VAC, 50–60 Hz  
**Off mode:** 0.3 W (typ.)  
**On mode:** 18.7 W (typ.)  
**Standby mode:** 0.5 W (typ.)  
**Power LED indicator:** Operation - White, Standby mode - White (flashing)  
**Energy Label Class:** E

## Dimensions

**Packaging in mm (W x H x D):** 730 x 420 x 188 mm  
**Product without stand (mm):** 557 x 331 x 64 mm  
**Product with stand (max height):** 557 x 508 x 239 mm

## Weight

**Product with packaging (kg):** 7.60 kg  
**Product with stand (kg):** 4.64 kg  
**Product without stand (kg):** 3.30 kg

## Operating conditions

**Altitude:** Operation: +12,000 ft (3658 m), Non-operation: +40,000 ft (12,192 m)  
**Temperature range (operation):** 0°C to 40 °C  
**MTBF:** 50 000 (Excluded backlight) hour(s)  
**Relative humidity:** 20%-80 %  
**Temperature range (storage):** -20°C to 60 °C

## Sustainability

**Environmental and energy:** RoHS  
**Recyclable packaging material:** 100 %  
**Specific Substances:** Mercury free, PVC/BFR free housing

## Compliance and standards

**Regulatory Approvals:** CB, FCC Class B, ICES-003, CE Mark, CU-EAC, EAEU RoHS, TUV/ISO9241-307, TUV-BAUART

## Cabinet

**Colour:** Dark Slate  
**Finish:** Textured

## What's in the box?

**Cables:** HDMI cable, DisplayPort cable, USB upstream cable, Power cable  
**Monitor with stand**  
**User Documentation**  
**Accessory:** VESA bracket



\* "IPS" word mark / trademark and related patents on technologies belong to their respective owners.  
 \* The maximum resolution works for DP input only.  
 \* For best output performance, please always ensure that your graphic card is capable of achieving the maximum resolution and refresh rate of this Philips display.  
 \* Response time value equal to SmartResponse  
 \* Smart MBR adjusts the brightness for blur reduction, so you cannot adjust brightness while smart MBR is turned on. To reduce motion blur, the LED backlight will strobe synchronously with screen refresh, which may cause noticeable changes in brightness.  
 \* Smart MBR is a gaming-optimised mode. Turning on Smart MBR may cause noticeable screen flickering. We recommended turning it off when you are not using the gaming function.  
 \* Adobe RGB and DCI-P3 Coverage based on CIE1976, sRGB Area based on CIE1931, NTSC Area based on CIE1976.  
 \* 2020 Advanced Micro Devices, Inc. All rights reserved. AMD, the AMD Arrow logo, AMD FreeSync™ and combinations thereof are trademarks of Advanced Micro Devices, Inc. Other product names used in this publication are for identification purposes only and may be trademarks of their respective companies.  
 \* NVIDIA® G-SYNC® support interface: DisplayPort  
 \* Make sure to update NVIDIA® G-SYNC® driver to the latest version, see more information on NVIDIA website: <https://www.nvidia.com/>  
 \* Make sure that your graphic card supports NVIDIA® G-SYNC®  
 \* The monitor may look different from feature images.