

PHILIPS

EVNIA



4K HDR display with
Ambiglow

Gaming Monitor

Designed for Xbox

Evnia 7000

32 (31.5"/80 cm diag.)

3840 x 2160 (4K UHD)



329M1RV

Optimised performance for next-gen console gaming

For true console gaming enthusiasts, the Designed for Xbox display delivers a new era of gaming. UltraClear 4K UHD with DisplayHDR 400 offers ultra-crisp and vibrant image quality to immerse you in the moment.

Design to enhance the senses

- Ambiglow adds a new dimension to your viewing experience
- Enhanced audio with DTS Sound™
- 144 Hz refresh rates for ultra-smooth, brilliant images
- 120 Hz refresh rates for ultra-smooth, brilliant images

Designed for Xbox

- Designed for Xbox for the optimal gaming experience
- AMD FreeSync™ Premium; tear free, stutter free, fluid gaming
- SmartImage HDR gives optimal viewing from your HDR content

Features for gamers needs

- LowBlue mode and Flicker-free easy-on-the eyes viewing
- MultiView enables simultaneous dual connection and view
- USB-C one cable does it all
- 1 ms (MPRT) fast response for crisp images and smooth gameplay
- Access and display multiple sources on two devices

Gaming Monitor

4K HDR display with Ambiglow

329M1RV/01

Highlights

Designed for Xbox



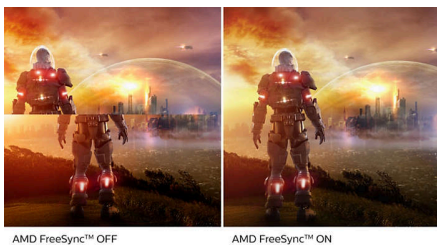
Unleash your console gaming. We partnered with the Xbox team to develop this Designed for Xbox display that is validated to deliver the optimal Xbox Series X visual performance the moment that you plug it in.

144 Hz Gaming



You play intense, competitive games. You demand a display with lag-free, ultra-smooth images. This Philips display redraws the screen image up to 144 times per second, effectively 2.4x faster than a standard display. A lower frame rate can make enemies appear to jump from spot to spot on the screen, making them difficult targets to hit. With 144 Hz frame rate, you get those critical missing images on the screen, showing enemy movement in ultra-smooth motion so you can easily target them. With ultra-low input lag and no screen tearing, this Philips display is your perfect gaming partner.

AMD FreeSync™ Premium



Gaming shouldn't be a choice between choppy gameplay or broken frames. AMD FreeSync™ Premium equips serious gamers with a fluid, tear-free gameplay experience at peak

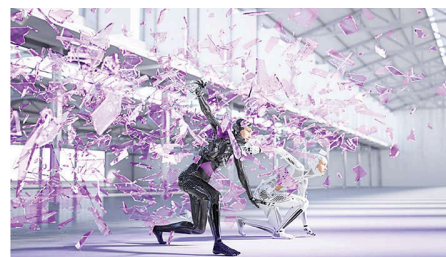
performance. There are no compromises, game confidently with a high refresh rate, low framerate compensation and low latency.

MultiView and built-in KVM



Control and switch between two devices through a single keyboard and mouse with the built-in KVM. MultiView lets you survey both sources simultaneously on one screen. With these features, you can reduce cable clutter and save valuable time. Perfect for streamers with two PCs, content creators or when prepping devices for a LAN event.

DTS Sound™



DTS Sound is an audio-processing solution designed to optimise the playback of music, movies, streaming and games on the PC regardless of form factors. DTS Sound enables an immersive virtual surround sound experience, complete with rich bass and dialogue enhancement and maximised volume levels free of any clipping or distortion.

1 ms MPRT fast response



MPRT (motion picture response time) is a more intuitive way to describe response time, which directly refers to the duration between seeing

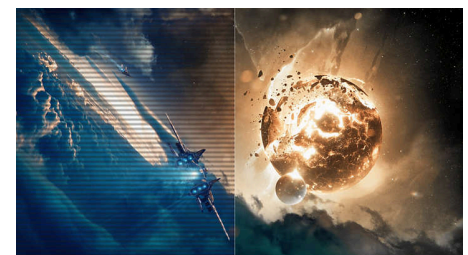
blurry noise and clean, crisp images. The Philips gaming monitor with 1 ms MPRT effectively eliminates smearing and motion blur and delivers sharper and more precise visuals to enhance your gaming experience. The best choice for playing thrilling and twitch-sensitive games.

SmartImage HDR



Select one of SmartImage HDR modes to best suit your needs. HDR Game: optimised for playing video games. With brighter white and darker black, the gaming scene is vivid and reveals more details, easily spot enemies hiding in the dark corners and shadows. HDR Movie: ideal for watching HDR movie. Delivers better contrast and brightness for a more realistic and immersive viewing experience. HDR Photo: enhanced red, green and blue for lively visuals. DisplayHDR: VESA DisplayHDR certified*. Personal: customised settings in picture menu. *Please refer to specification for HDR grade.

LowBlue Mode and Flicker-free



Our LowBlue Mode and Flicker-free technology have been developed to reduce eye strain and fatigue often caused by long hours in front of a monitor.



Gaming Monitor

4K HDR display with Ambiglow

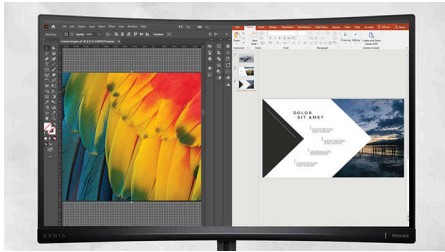
329M1RV/01

Highlights

USB-C

This Philips display features a USB type-C connector with power delivery. With intelligent and flexible power management, you can power charge your compatible device directly. Its slim, reversible USB-C allows for easy, one-cable connection. You can watch high-resolution video while powering up and re-charging your compatible device at the same time.

MultiView technology



With the ultra-high resolution Philips MultiView display, you can now experience a world of connectivity. MultiView enables active dual

connect and view so that you can work with multiple devices like a PC and notebook simultaneously, for complex multitasking.

120 Hz Gaming



You play intense, competitive games. You demand a display with lag-free, ultra-smooth images. This Philips display redraws the screen image up to 120 times per second, effectively faster than a standard display. A lower frame rate can make enemies appear to jump from spot to spot on the screen, making them difficult targets to hit. With 120 Hz frame rate, you get those

critical missing images on the screen, showing enemy movement in ultra-smooth motion so you can easily target them. With ultra-low input lag and no screen tearing, this Philips display is your perfect gaming partner.



Specifications

Picture/Display

Panel Size: 31.5 inch/80 cm
Aspect ratio: 16:9
LCD panel type: IPS technology
Backlight type: W-LED system
Pixel pitch: 0.181 x 0.181 mm
Brightness: 500 cd/m²
Display colours: Colour support 1.07 billion colours
Colour gamut (typical): NTSC 113%*, sRGB 124%*, Adobe RGB 111%*
Contrast ratio (typical): 1000:1
SmartContrast: Mega Infinity DCR
Response time (typical): 1 ms (Grey to Grey)*
Viewing angle: 178° (H)/178° (V), @ C/R > 10
Picture enhancement: SmartImage game
Maximum resolution: HDMI/DP: 3840 x 2160 @ 144 Hz*; USB-C: 3840 x 2160 @ 120 Hz
Effective viewing area: 697.344 (H) x 392.2344 (V) mm
Scanning Frequency: HDMI: 30–135 kHz (H) / 48–144 Hz (V); DP: 30–254 kHz (H) / 48–144 Hz (V); USB-C: 30–254 kHz (H) / 48–120 Hz (V)
sRGB
Delta E: < 2 (sRGB)
Flicker-free
Pixel Density: 139.87 PPI
LowBlue Mode
Display Screen Coating: Anti-Glare, 3H, Haze 25%
SmartUniformity: 93 ~ 105%
MPRT: 1 ms
Low Input Lag
AMD FreeSync™ technology: Premium
HDR: DisplayHDR 400 certified
Ambiglow: 4 sided
HDMI 2.1 Feature: VRR, FRL

Connectivity

Signal Input: HDMI 2.1 x 3, DisplayPort 1.4 x 1, USB-C x 1 (DP Alt mode, PD 65W)
Sync Input: Separate Sync
Audio (In/Out): Audio out
USB: USB-B x 1 (upstream), USB 3.2 x 4 (downstream with 2 fast charge B.C 1.2)

Convenience

Built-in Speakers: 5 W x 2, DTS Sound
Plug and Play Compatibility: DDC/CI, Mac OS X, sRGB, Windows 10 / 8.1 / 8 / 7
User convenience: Power On/Off, Menu/OK, Input/Up, Game Settings/Down, SmartImage

game/Back

OSD Languages: Brazil Portuguese, Czech, Dutch, English, Finnish, French, German, Greek, Hungarian, Italian, Japanese, Korean, Polish, Portuguese, Russian, Spanish, Simplified Chinese, Swedish, Turkish, Traditional Chinese, Ukrainian
Other convenience: Kensington lock, VESA mount (100 x 100 mm)
MultiView: PBP (2 x devices)
KVM: USB-C, USB-B

Stand

Height adjustment: 130 mm
Swivel: -/+ 20 degree
Tilt: -5/15 degree

Power

Power supply: Internal, 100–240 VAC, 50–60 Hz
Off mode: 0.3 W (typ.)
On mode: 58.9 W (typ.)
Standby mode: 0.5 W (typ.)
Power LED indicator: Operation - White, Standby mode - White (flashing)
Energy Label Class: G

Dimensions

Packaging in mm (W x H x D): 800 x 526 x 224 mm
Product without stand (mm): 715 x 428 x 78 mm
Product with stand (max height): 715 x 596 x 297 mm

Weight

Product with packaging (kg): 16.67 kg
Product with stand (kg): 11.63 kg
Product without stand (kg): 7.80 kg

Operating conditions

Altitude: Operation: +12,000 ft (3658 m), Non-operation: +40,000 ft (12,192 m)
Temperature range (operation): 0°C to 40°C °C
MTBF: 50 000 (Excluded backlight) hour(s)
Relative humidity: 20%-80 %
Temperature range (storage): -20°C to 60°C °C

Sustainability

Environmental and energy: RoHS
Recyclable packaging material: 100 %
Specific Substances: Mercury free, PVC/BFR free housing

Compliance and standards

Regulatory Approvals: CB, TUV/ISO9241-307, TUV-BAUART, CU-EAC, EAEU RoHS, CE Mark

Cabinet

Colour: Black
Finish: Textured/Glossy

What's in the box?

Cables: DP cable, HDMI cable, USB-C to C cable, Power cable
Monitor with stand
User Documentation



* "IPS" word mark / trademark and related patents on technologies belong to their respective owners.
 * The maximum resolution works for either HDMI input or DP input.
 * For best output performance, please always ensure that your graphic card is capable of achieving the maximum resolution and refresh rate of this Philips display.
 * Response time value equal to SmartResponse
 * MPRT adjusts the brightness for blur reduction, so the brightness cannot be adjusted while MPRT is turned on. To reduce motion blur, the LED backlight will strobe in time with the screen refresh rate, which may cause a noticeable change in brightness.
 * MPRT is a gaming-optimised mode. Turning on MPRT may cause noticeable screen flickering. It is recommended to turn this mode off when you are not using the gaming function.
 * NTSC Area based on CIE 1976
 * sRGB Area based on CIE1931
 * Adobe RGB Coverage based on CIE 1976
 * 2020 Advanced Micro Devices, Inc. All rights reserved. AMD, the AMD Arrow logo, AMD FreeSync™ and combinations thereof are trademarks of Advanced Micro Devices, Inc. Other product names used in this publication are for identification purposes only and may be trademarks of their respective companies.
 * The monitor may look different from feature images.