



Philips Brilliance  
LCD monitor with Clinical  
D-image

Clinical review display  
27" (68.6 cm)  
2560 x 1440 (3.6 MP)

**Brilliance**



**C272P4QPKEW**

## Clinical Review Display

with Brilliant Images

This Philips display is ideal for everyday clinical care environment. D-image preset gives you consistent DICOM grayscale medical images. Its medical grade power supply ensures basic safety. Anti-microbial housing inhibits bacterial growth.

### Clinical Review

- Clinical D-image preset for DICOM part 14 Grayscale images
- SmartImage Clinic for common display settings
- AntiMicrobial housing actively inhibits bacterial growth
- Medical grade power supply ensures safety with low emission
- Design complements clinical environment

### Brilliant performance

- PLS Quad HD technology ensures 8 bit color, 109 ppi images
- MultiView enables active dual connect and view at same time
- PowerSensor saves up to 80% energy costs
- Built-in stereo speakers for multimedia
- Webcam with mic to connect and collaborate
- DisplayPort offers audio and video over a single, long cable

### Designed for people

- SmartErgoBase enables people-friendly ergonomic adjustments

**PHILIPS**

# Highlights

## Clinical D-image

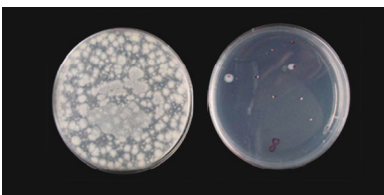


Monitors must show medical images consistently with high quality to achieve reliable interpretations. The rendering of medical Grayscale images on standard monitors is mostly inconsistent at best, making them unsuitable for usage in a clinical environment. Philips clinical review displays with clinical D-image preset are factory calibrated to give DICOM part 14 compatible Grayscale standard display performance. By using high quality LCD panels with LED technology, Philips offers you consistent and reliable performance at an affordable price point. Further info on <http://medical.nema.org/>

## SmartImage Clinic

SmartImage is an exclusive, leading edge Philips technology that analyzes the content displayed on your screen, and based on different applications/images displayed on a monitor, SmartImage optimizes display content by dynamically adjusting brightness, contrast, color and sharpness in real time.

## AntiMicrobial housing



Germs have become a growing problem in hospitals and clinical environments worldwide as they can cause life-threatening infections. Philips clinical review displays take care of this challenge by using JIS Z2801 compliant antimicrobial additive in its housing material making it an integral part of the display housing. Your well being along with your patients is now assured by this protective shield that

impedes the growth of most common microorganisms such as "Staphylococcus aureus (Gastroenteritis)", "Escherichia coli (E Coli)" and "Klebsiella (Pneumonia)", for example.

## Medical grade power supply

Basic safety, essential performance and reliability are essential requirements in a professional clinical environment. Unlike standard displays, Philips clinical review displays employ special medical grade power supplies in order to meet these requirements. It complies with EN/IEC 60601-1 standard ensuring basic safety and essential performance. Additionally it also complies with EN/IEC 60601-1-2 collateral standard for medical grade electromagnetic tests and compatibility. Many countries, hospitals and clinics mandate compliance to these standards as a requirement.

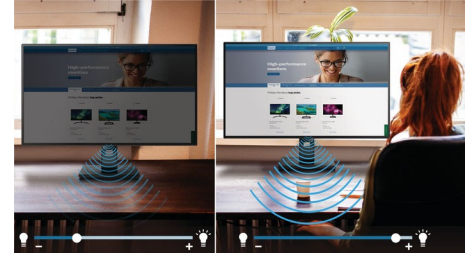
## PLS Quad HD

This professional Philips display uses latest PLS Quad HD panel giving you ultra high-res brilliant wide angle images with 2560x1440 pixel resolution. With excellent 8 bit color depth combined with 109 ppi density, you can now enjoy professional true color sRGB images compared to limited 6 bit color depth displays with 82ppi density. Its higher brightness and lower power consumption relative to conventional wide view angle displays ensure you always have brilliant performance, while saving energy too. It's best suited for professional applications like CAD, Graphics design, Image rendering etc

## MultiView technology

MultiView for Clinical enables active dual-connect and view at same time. With the ultra-high resolution Philips MultiView display you can now experience maximum productivity in a convenient, clean setup. MultiView for Clinical enables active dual-connect and view so that you can work with multiple PCs or devices side-by-side simultaneously, making complex multi-tasking work a breeze. MultiView side-by-side viewing of two different sources is ideal within the clinical environment for comparison of data and images on the same screen.

## PowerSensor



PowerSensor is a built-in 'people sensor' that transmits and receives harmless infrared signals to determine if user is present and automatically reduces monitor brightness when user steps away from the desk, cutting energy costs by up to 80 percent and prolonging monitor life

## Built-in stereo speakers



A pair of high quality stereo speakers built into a display device. It can be visible front firing, or invisible down firing, top firing, rear firing, etc depending on model and design.

## Webcam

Embedded webcam and microphone enables you to view and communicate with your colleagues and clients. This simple solution allows you to collaborate and share, saving precious time and travel related costs.

## DisplayPort

DisplayPort is a digital link from PC to Monitor without any conversion. With higher capabilities than DVI standard, it is fully capable to support up to 15meter cables and 10.8 Gbps/sec data transfer. With this high performance and zero latency, you get the fastest imaging and refresh rates - making DisplayPort the best choice for not only general office or home use, but also for the demanding media and more. It also keeps interoperability in mind via use of various adapters.



# Specifications

## Picture/Display

- LCD panel type: PLS LCD
- Backlight type: W-LED system
- Panel Size: 27 inch / 68.6 cm
- Effective viewing area: 596.74 (H) x 335.66 (V)
- Aspect ratio: 16:9
- Optimum resolution: 2560 x 1440 @ 60Hz
- Response time (typical): 12 ms
- Brightness: 300 cd/m<sup>2</sup>
- Contrast ratio (typical): 1,000:1
- Pixel pitch: 0.233 x 0.233 mm
- Viewing angle: 178° (H) / 178° (V), @ C/R > 10
- Display colors: 16.7 M (True 8 bit)
- Scanning Frequency: 30 - 90 kHz (H) / 56 - 75 Hz (V)
- sRGB
- Picture enhancement: SmartImage Clinic
- DICOM: Clinical D-image, DICOM part-14
- DICOM calibrated brightness: 285 cd/m<sup>2</sup>

## Connectivity

- USB: USB 2.0 upstream (for webcam)
- Signal Input: DisplayPort 1.2, DVI-D (digital, HDCP), HDMI x 2
- Sync Input: Separate Sync, Sync on Green
- Audio (In/Out): PC audio-in, Headphone out
- Built-in speakers: 2Wx2

## Convenience

- Built-in webcam: 2.0 megapixel camera with microphone and LED indicator
- MultiView: PIP/PBP mode, 2x devices
- User convenience: SmartImage Clinic, Menu, Multiview, Power On/Off, User
- Control software: SmartControl Premium
- OSD Languages: Brazil Portuguese, Czech, Dutch, English, Finnish, French, German, Greek, Hungarian, Italian, Japanese, Korean, Polish, Portuguese, Russian, Simplified Chinese, Spanish, Swedish, Traditional Chinese, Turkish, Ukrainian
- Other convenience: Kensington lock, VESA mount (100x100mm)
- Plug & Play Compatibility: DDC/CI, Mac OS X, sRGB, Windows 8/7/Vista

## Stand

- Height adjustment: 150 mm
- Pivot: 90 degree
- Swivel: -65/65 degree
- Tilt: -5/20 degree

## Power

- On mode: 27.8 W (typ.) (EnergyStar 6.0 test method)
- Standby mode: 0.3 W (typ.)
- Off mode: Zero watts with Zero switch
- Power LED indicator: Operation - White, Standby mode- White (blinking)
- External power supply: 100-240VAC, 50-60Hz (Medical cert.: IEC60601-1 / EN60601-1)

## Dimensions

- Product with stand(max height): 639 x 580 x 242 mm
- Product without stand (mm): 639 x 405 x 64 mm
- Packaging in mm (WxHxD): 750 x 234 x 490 mm

## Weight

- Product with stand (kg): 8.5 kg
- Product without stand (kg): 5.7 kg
- Product with packaging (kg): 11.35 kg

## Operating conditions

- Temperature range (operation): 0°C to 40°C °C
- Temperature range (storage): -20°C to 60°C °C
- Relative humidity: 20%-80 %
- Altitude: Operation: +12,000ft (3,658m), Non-operation: +40,000ft (12,192m)
- MTBF: 40,000 hour(s)

## Anti-Microbial

- Anti-microbial housing
- JISZ2801Anti-microbial housing

## Sustainability

- Environmental and energy: EnergyStar 6.0, PowerSensor, RoHS
- Recyclable packaging material: 100 %
- Specific Substances: PVC / BFR free housing, Mercury free

## Compliance and standards

- EMC: IEC/EN60601-1-2, CE Mark
- Safety: IEC/EN60601-1, CE Mark, GOST
- Ergonomic/Others: JIS Z2801, Energy Star, TUV Ergo, TUV/GS, ISO 13485 certified, WEEE

## Cabinet

- Front bezel: White
- Rear cover: White
- Foot: White
- Finish: Texture



Issue date 2022-04-21

Version: 6.0.1

12 NC: 8670 001 08815  
EAN: 87 12581 70242 7

© 2022 Koninklijke Philips N.V.  
All Rights reserved.

Specifications are subject to change without notice.  
Trademarks are the property of Koninklijke Philips N.V.  
or their respective owners.

[www.philips.com](http://www.philips.com)

\* Please note: Any use for primary diagnostics is the sole responsibility of the hospital or clinic operator only.

\* DICOM is the registered trademark of the NEMA for its standards publications relating to digital communications of medical information.