

# PHILIPS

V-Line Display

Signage Solutions

47"

Direct LED Backlight

Full HD

2000 cd/m<sup>2</sup>

BDL4780VH



## Superb image visibility and clearer images

### With an ultra-bright display

With this high-brightness Signage Solution display, you will enjoy all the benefits of state-of-the-art connectivity and content management possibilities while being assured that remote management safeguards the lowest cost of ownership.

#### **Optimised for public viewing**

- Full HD LED for brilliant images with incredible contrast
- Projects a super-bright picture even in daylight

#### **Innovative solutions for any signage application**

- Connect and control your content via the cloud with HTML5
- Schedule what you want, when you want with SmartPlayer
- Free and easy-to-use content management with SmartCMS
- Optional OPS Insert to create an all-in-one solution

#### **Maximising the impact of your message**

- Manage and control your network remotely via SmartControl

#### **Care about you, your business and your audience**

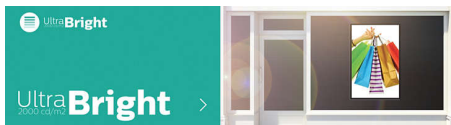
- SmartPower for energy saving
- Keep your content up and running with FailOver

# Highlights

## Full HD LED technology

Picture Quality matters. Standard displays deliver quality, but you expect more. Imagine crisp detail paired with high brightness, incredible contrast and realistic colours for a true-to-life picture.

## High brightness – 2000 nit



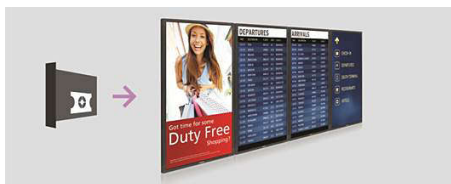
Enjoy an excellent visual experience even in areas that are illuminated by direct sunlight thanks to the 2000-nit panel. The high brightness offers a wide array of new implementation possibilities especially in locations that have high ambient light levels, delivering crystal clear images for all locations where ambient brightness is an issue.

## SmartControl



SmartControl lets you remotely control and manage your network of displays via RJ45 and RS232C. Easily fine-tune all display settings including resolution, brightness, contrast and cloning of your settings over your complete network.

## OPS Insert



Turn your display into an all-in-one digital signage solution and create a display network that is connected, intelligent and secure. Open

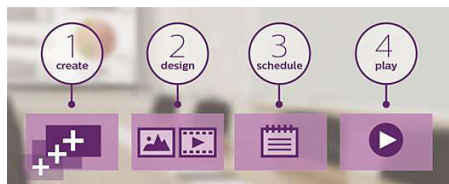
Pluggable Specification (OPS) is an industry-standard slot into which you can add an OPS-standardised media player. This cable-free solution gives you the ability to install, use or maintain your hardware whenever you need to.

## SmartBrowser



Connect and control your content via the cloud with the integrated HTML5 browser. Design your signage content online and connect it with a display or with your entire network. Simply plug in a RJ45 Internet cable for network connection and connect the display with the dedicated URL address, and you are ready to play your cloud-based content.

## SmartCMS



Free and easy-to-use content management system that works exclusively with Philips Signage Solutions displays to manage your digital signage content. With SmartCMS you can create and schedule your own content over 24 hours every day. Simply create your network, design your content and schedule your playlist, and you are ready to play!

## FailOver



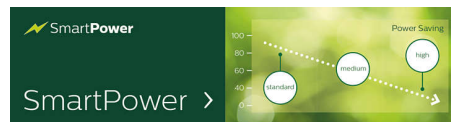
Keeping your content up and running is critical for demanding commercial applications. While it is unlikely you will face a content disaster, FailOver provides content protection with a revolutionary technology that plays back-up content on screen in the event of a media player failure. FailOver automatically kicks in when the primary input fails. Simply select a primary input connection and a FailOver connection and you're ready for instant protection.

## SmartPlayer



Turn your USB into a true cost-effective digital signage device. Simply save your content (video, audio, pictures) on your USB and plug into your display. Create your playlist and schedule your content via the on-screen menu, and enjoy your own playlists anytime, anywhere.

## SmartPower



The backlight intensity can be controlled and pre-set by the system to reduce the power consumption by up to 50%, which saves substantially on energy costs.

# Specifications

## Picture/Display

**Diagonal screen size (inch):** 46.96 inch  
**Aspect ratio:** 16:9  
**Panel resolution:** 1920 x 1080p  
**Optimum resolution:** 1920 x 1080 @ 60 Hz  
**Brightness:** 2000 cd/m<sup>2</sup>  
**Display colours:** 1.07 billion colours  
**Contrast ratio (typical):** 1300:1  
**Dynamic contrast ratio:** 500,000:1  
**Response time (typical):** 10 ms  
**Viewing angle (horizontal):** 178 degree  
**Viewing angle (vertical):** 178 degree  
**Picture enhancement:** 3/2 - 2/2 motion pull down, Motion compens. deinterlacing, Progressive scan, Dynamic contrast enhancement  
**DICOM:** Clinical D-image

## Connectivity

**Audio output:** Audio Left/Right (RCA), External speaker connector  
**Video input:** DisplayPort (1.2), HDMI (x 2), DVI-D, VGA (Analogue D-Sub), USB, Component (BNC), Composite (BNC)  
**Audio input:** 3.5 mm jack, Audio Left/Right (RCA)  
**Other connections:** OPS, USB  
**Video output:** DisplayPort, DVI-I, VGA (Analogue D-Sub)  
**External control:** RJ45, RS232C (in/out) 2.5 mm jack, IR (in/out) 3.5 mm jack

## Convenience

**Placement:** Portrait, Landscape  
**Tiled Matrix:** Up to 10 x 10  
**Screen-saving functions:** Pixel Shift, Low Bright  
**Keyboard control:** Hidden, Lockable  
**Signal loop through:** DVI, VGA, RS232, DisplayPort, IR Loop through  
**Energy-saving functions:** Smart Power  
**Safety control functions:** Heat Control,

Temperature Sensor

**Network controllable:** RJ45, RS232, Card OPS RS232, One Wire (HDMI-CEC)

## Sound

**Built-in speakers:** 2 x 10 W

## Power

**Mains power:** 100 ~ 240 VAC, 50 ~ 60 Hz  
**Consumption (On mode):** 160 W (EnergyStar 6.0 test method)  
**Standby power consumption:** <0.5 W

## Supported Display Resolution

**Computer formats:** 1920 x 1200, 60 Hz, 1920 x 1080, 60 Hz, 1600 x 1200, 60 Hz, 1440 x 900, 60 Hz, 1366 x 768, 60 Hz, 1360 x 768, 60 Hz, 1280 x 1024, 60 Hz, 1280 x 800, 60 Hz, 1280 x 768, 60 Hz, 1024 x 768, 60 Hz, 800 x 600, 56, 60, 72, 75 Hz, 640 x 480, 60, 67, 72, 75 Hz  
**Video formats:** 1080p, 50, 60 Hz, 1080i, 50, 60 Hz, 720p, 50, 60 Hz, 576i, 50 Hz, 576p, 50 Hz, 480p, 60 Hz, 480i, 60 Hz

## Dimensions

**Set Width:** 1076.20 mm  
**Product weight:** 24 kg  
**Set Height:** 620.59 mm  
**Set Depth:** 132.10 mm  
**Wall Mount:** 400 x 400 mm, M6  
**Bezel width:** 15.6 mm  
**Product weight (lb):** 52.9 lb

## Operating conditions

**Altitude:** 0 ~ 3000 m  
**Temperature range (operation):** 5 ~ 40 °C  
**MTBF:** 60,000 hour(s)  
**Relative humidity:** 20 ~ 80 %  
**Temperature range (storage):** -20 ~ 60 °C

## Multimedia Applications

**USB Playback Video:** M2TS, M4V, MK3D, MKV, MP4, MPEG, MPG, MTS, TS, TTS, VOB, WMV  
**USB Playback Picture:** BMP, GIF, JPEG, JPG  
**USB Playback Audio:** AAC, AIF, AIFF, ASF, LPCM, M3U, M4A, MP3, MP4, WAV, WMA

## Accessories

**Included accessories:** Remote Control, Batteries for remote control, AC Power Cord, User manual on CD-ROM, Quick start guide, RS232 cable  
**Optional accessories:** HDBaseT OPS Receiver (CRD25)  
**Stand:** Optional BM04642 / BM02542

## Miscellaneous

**On-Screen Display Languages:** English, French, German, Italian, Polish, Russian, Simplified Chinese, Spanish, Turkish, Arabic, Japanese, Traditional Chinese  
**Warranty:** 3 year warranty  
**Regulatory approvals:** CE, FCC, Class B, UL/cUL, CCC, RoHS, C-Tick, GOST, BSMI, CB, J-Moss, PSE, VCCI

