



Philips
LCD monitor with
SoftBlue Technology

S Line

24 (23.8" / 60.5 cm diag.)
1920 x 1080 (Full HD)

241S6EHAB

Essential features, efficient performance

for maximum productivity

Designed for you, the new Philips monitor features new SoftBlue LED Technology for easy on the eyes and deliver brilliant colorful images for maximum productivity.

Great performance

- Less eye fatigue with Flicker-free technology
- IPS LED wide view technology for image and color accuracy
- SmartContrast 20000000:1 for incredible rich black details
- SoftBlue Technology easy on the eyes and maintains color
- SmartImage presets for easy optimized image settings

Sustainable Eco-design

- SmartPower: Up to 50% power saving
- Zero mercury content

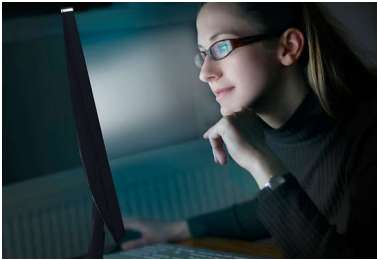
Easy to experience

- HDMI ensures universal digital connectivity
- Built-in stereo speakers for multimedia

PHILIPS

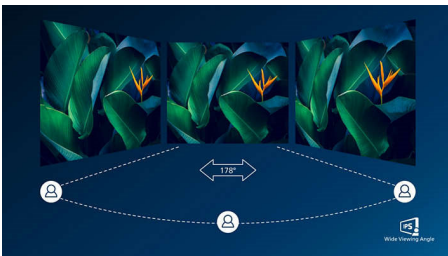
Highlights

SoftBlue Technology



SoftBlue LED technology uses a smart technology to reduce harmful shortwave blue light without affecting the color or image of the display. SoftBlue LED technology is certified by international testing organizations TUV Rheinland to reduce harmful blue light.

IPS technology



IPS displays use an advanced technology which gives you extra wide viewing angles of 178/178 degree, making it possible to view the display from almost any angle. Unlike standard TN panels, IPS displays gives you remarkably crisp images with vivid colors, making it ideal not only for Photos, movies and web browsing, but also for professional applications which demand color accuracy and consistent brightness at all times.

Flicker-free technology



Due to the way brightness is controlled on LED-backlit screens, some users experience flicker on their screen which causes eye fatigue. Philips Flicker-free Technology applies

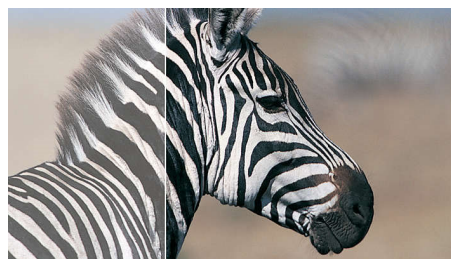
a new solution to regulate brightness and reduce flicker for more comfortable viewing.

SmartImage



SmartImage is an exclusive leading edge Philips technology that analyzes the content displayed on your screen and gives you optimized display performance. This user friendly interface allows you to select various modes like Office, Photo, Movie, Game, Economy etc., to fit the application in use. Based on the selection, SmartImage dynamically optimizes the contrast, color saturation and sharpness of images and videos for ultimate display performance. The Economy mode option offers you major power savings. All in real time with the press of a single button!

SmartContrast ratio 20000000:1



You want the LCD flat display with the highest contrast and most vibrant images. Philips advanced video processing combined with unique extreme dimming and backlight boosting technology results in vibrant images. SmartContrast will increase the contrast with excellent blacklevel and accurate rendition of dark shades and colors. It gives a bright, lifelike picture with high contrast and vibrant colors.

Built-in stereo speakers



A pair of high quality stereo speakers built into a display device. It can be visible front firing, or invisible down firing, top firing, rear firing, etc depending on model and design.

HDMI Ready



An HDMI-ready device has all the required hardware to accept High-Definition Multimedia Interface (HDMI) input. A HDMI cable enables high-quality digital video and audio all transmitted over a single cable from a PC or any number of AV sources (including set-top boxes, DVD players, A/V receivers and video cameras).

SmartPower

SmartPower is an artificial intelligent technology which dynamically analyzes the content of the screen image to achieve power saving. The backlight intensity can be controlled automatically and pre-set by the system to reduce the power consumption by up to 50%, which saves substantially on energy costs

Zero mercury content

Philips monitors with LED backlighting are free of Mercury content, one of the most toxic natural substances, which affects humans and animals. This reduces the environmental impact of the display throughout its life-cycle, from manufacturing to disposal.



Specifications

Connectivity

- Signal Input: DVI-D (digital, HDCP), VGA (Analog), HDMI (HDCP)
- Sync Input: Separate Sync, Sync on Green
- Audio (In/Out): PC audio-in, Headphone out

Picture/Display

- Panel Size: 23.8 inch / 60.5 cm
- Aspect ratio: 16:9
- LCD panel type: IPS technology
- Backlight type: W-LED system
- Pixel pitch: 0.2745 x 0.2745 mm
- Optimum resolution: 1920x 1080 @ 60Hz
- Brightness: 250 cd/m²
- Display colors: 16.7 M
- Contrast ratio (typical): 1000:1
- SmartContrast: 20,000,000:1
- Response time (typical): 5 ms (Gray to Gray)*
- Viewing angle: 178° (H) / 178° (V), @ C/R > 10
- Picture enhancement: SmartImage
- Effective viewing area: 527.04 (H) x 296.46 (V)
- Scanning Frequency: 30 - 83 kHz (H) / 56 - 76 Hz (V)
- sRGB
- SoftBlue
- Pixel Density: 93 PPI

Convenience

- Built-in Speakers: 2 W x 2
- Plug & Play Compatibility: DDC/CI, Mac OS X, sRGB, Windows 10 / 8.1 / 8 / 7
- User convenience: SmartImage, Volume, SmartPower, Menu, Power On/Off
- OSD Languages: Brazil Portuguese, Czech, Dutch, English, Finnish, French, German, Greek, Italian, Japanese, Korean, Polish, Portuguese, Russian, Simplified Chinese, Spanish, Swedish, Traditional Chinese, Turkish, Ukrainian
- Other convenience: Kensington lock, VESA mount (100x100mm)
- Control software: SmartControl

Stand

- Tilt: -5/20 degree

Power

- ECO mode: 14.8 W (typ.)
- Power supply: Built-in, 100-240VAC, 50-60Hz
- Off mode: < 0.2 W (typ.)
- On mode: 24.9 W (typ.)
- Standby mode: < 0.3 W (typ.)
- Power LED indicator: Operation - White, Standby mode- White (blinking)

Dimensions

- Product with stand (mm): 563 x 435 x 207 mm
- Packaging in mm (WxHxD): 603 x 471 x 157 mm
- Product without stand (mm): 563 x 351 x 51 mm

Weight

- Product with packaging (kg): 6.21 kg
- Product with stand (kg): 4.22 kg
- Product without stand (kg): 3.77 kg

Operating conditions

- Altitude: Operation: +12,000ft (3,658m), Non-operation: +40,000ft (12,192m)
- Temperature range (operation): 0°C to 40°C °C
- MTBF: 70,000 hrs (excluded backlight) hour(s)
- Relative humidity: 20%-80 %
- Temperature range (storage): -20°C to 60°C °C

Sustainability

- Environmental and energy: RoHS
- Recyclable packaging material: 100 %
- Specific Substances: PVC / BFR free housing, Mercury free
- Recycled material: 25%

Compliance and standards

- Regulatory Approvals: PSB, TCO Certified, PSE, VCCI, WEEE

Cabinet

- Finish: Texture
- Foot: Black
- Front bezel: Black
- Rear cover: Black



Issue date 2024-03-24

Version: 2.0.1

EAN: 87 12581 74189 1

© 2024 Koninklijke Philips N.V.
All Rights reserved.

Specifications are subject to change without notice.
Trademarks are the property of Koninklijke Philips N.V.
or their respective owners.

www.philips.com

* "IPS" word mark / trademark and related patents on technologies belong to their respective owners.

* Response time value equal to SmartResponse