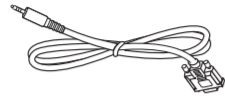


Power Cord



RS232 Cable



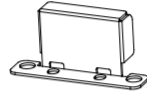
RS232 Daisy Chain Cable



IR Sensor Cable



Philips logo plate



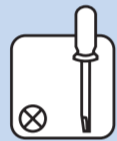
AC Switch Cover x1



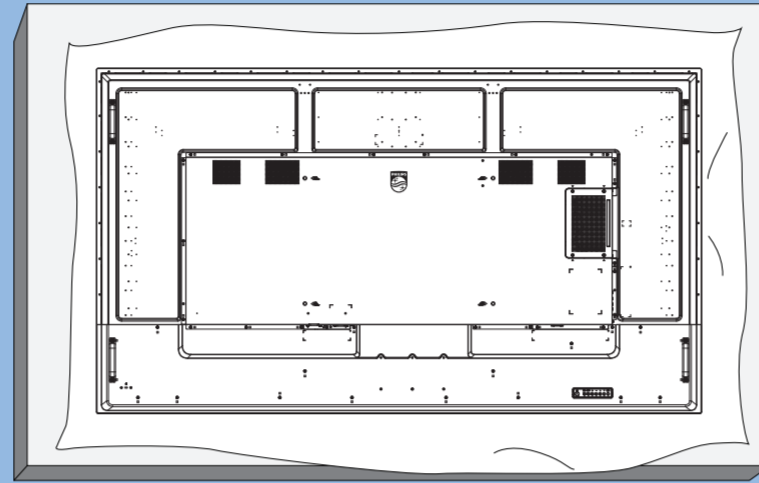
USB Cover x1

* Differences according to regions.

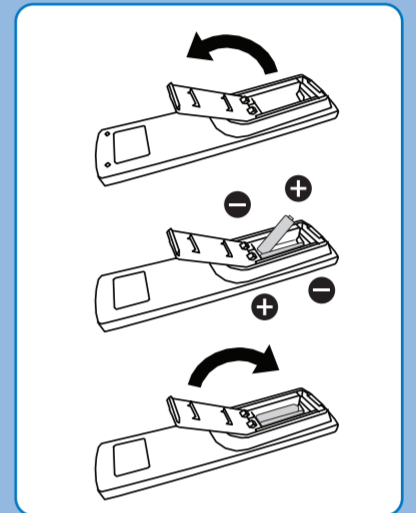
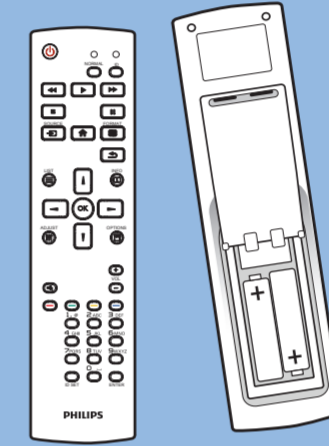
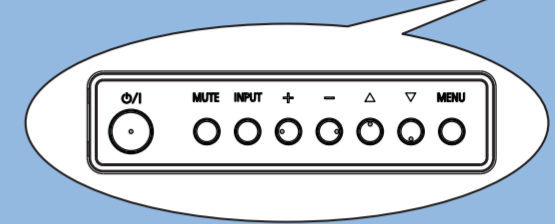
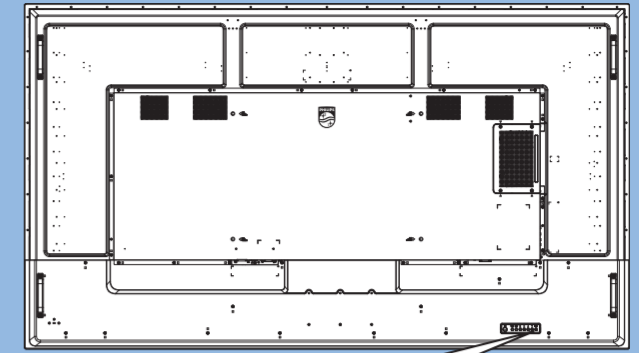
Display design and accessories may differ from those illustrated above.



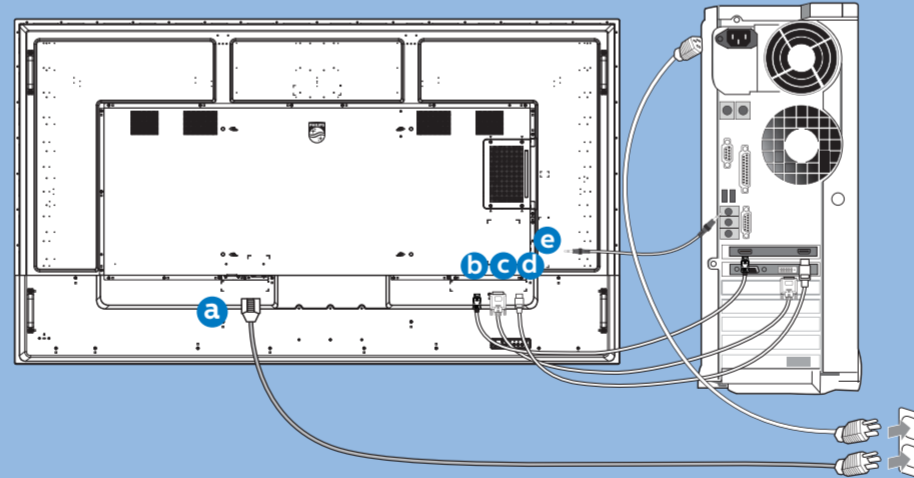
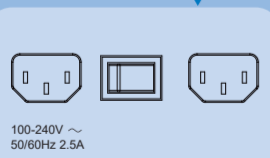
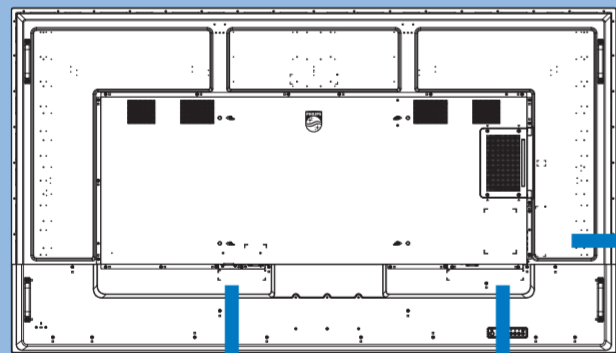
1



2



3



AC IN



DP



DVI



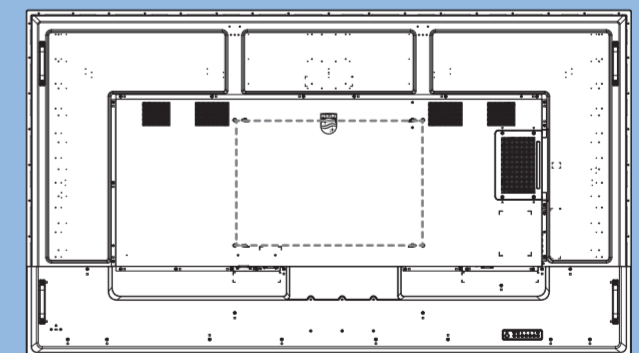
HDMI



AUDIO



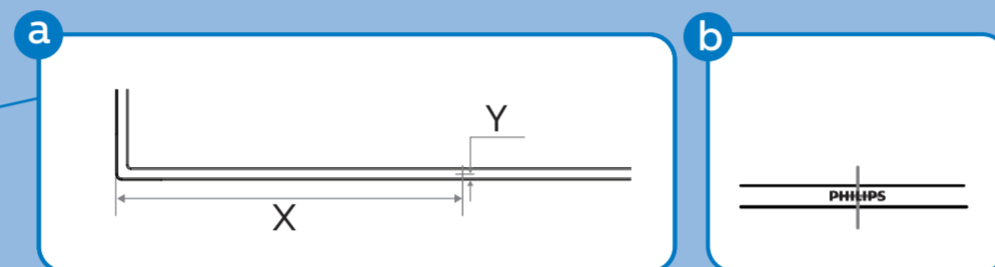
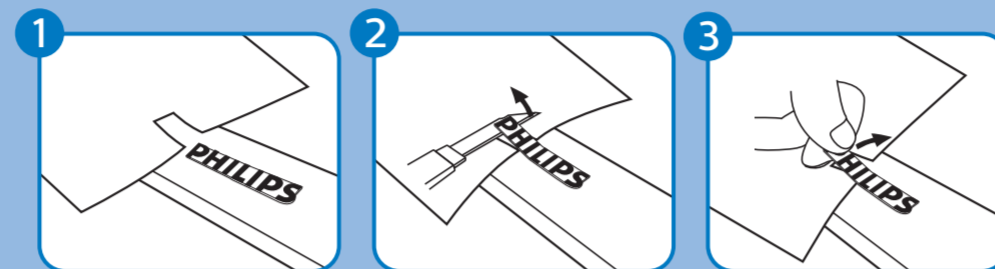
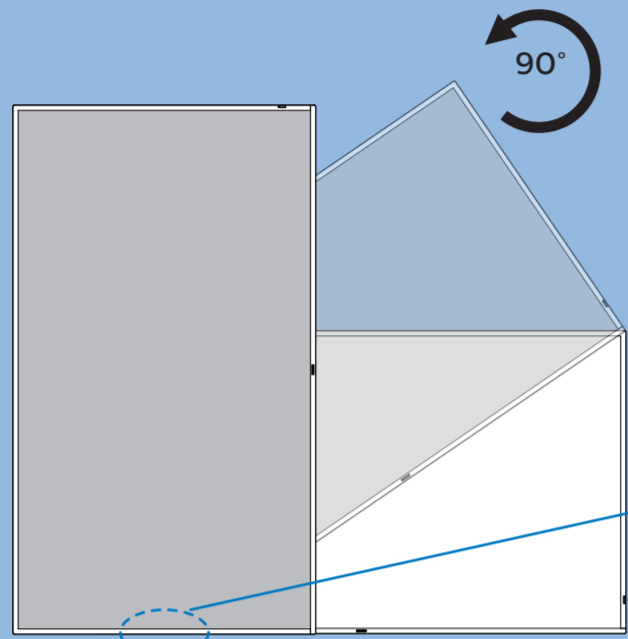
4



M8 * (15+X) mm
(X=Thickness of Wall mount BKT)

75BDL4510D: 600mmx400mm
86BDL4510D: 600mmx400mm

5



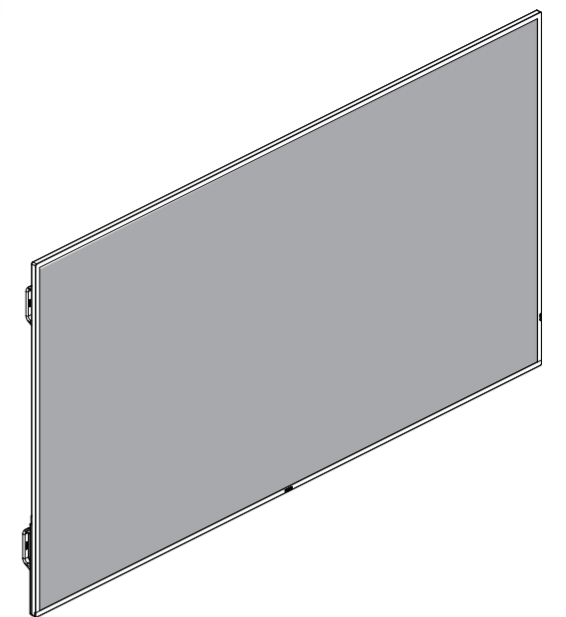
75BDL4510D: X=480.9 mm Y=7.9 mm
 86BDL4510D: X=550.0 mm Y=8.2 mm

PHILIPS

Professional Display Solutions

D Line

75BDL4510D
86BDL4510D



Quick Start



Please check out the website below for more product information.
www.philips.com/signagesolutions-support



Envision Peripherals Inc.
 490 N McCarthy Blvd, Suite #120
 Milpitas, CA 95035
 USA

2021 © TOP Victory Investments Ltd. All rights reserved.
 This product has been manufactured by and is sold under the responsibility of Top Victory Investments Ltd., and Top Victory Investments Ltd. is the warrantor in relation to this product. Philips and the Philips Shield Emblem are registered trademarks of Koninklijke Philips N.V. and are used under license.
 Specifications are subject to change without notice.

Version: V2.02 2020-12-27

