

Philips
LCD monitor with
SoftBlue Technology

S Line

22 (21.5"/54.6 cm diag.)
1920 x 1080 (Full HD)

223S7EYMB



Reliable and essential features

that drive business efficiency

Our S Line monitor delivers business efficiency. A wide-view IPS display with SoftBlue technology is great for easy-on-the-eyes productivity. The height-adjustable, frameless display allows for tiling multiple monitors for an expanded view.

Brilliant performance

- SmartImage pre-sets for easy optimised image settings
- IPS technology for full colours and wide viewing angles
- 16:9 Full HD display for crisp, detailed images
- Narrow-border display for a seamless appearance

Features for the way you work

- Built-in stereo speakers for multimedia
- DisplayPort connection for maximum visuals

Designed for comfortable productivity

- Low bezel-to-table height for maximum reading comfort
- SmartErgoBase enables user-friendly ergonomic adjustments
- EasyRead mode for a paper-like reading experience
- SoftBlue Technology is easy on the eyes and maintains colour
- Less eye fatigue with Flicker-Free technology

PHILIPS

LCD monitor with SoftBlue Technology
S Line 22 (21.5"/54.6 cm diag.), 1920 x 1080 (Full HD)

Highlights

IPS technology



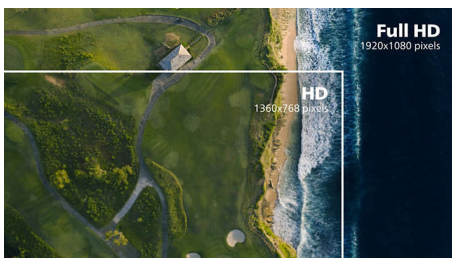
IPS displays use advanced technology that gives you extra-wide viewing angles of 178/178 degrees, making it possible to view the display from almost any angle — even in 90-degree Pivot mode! Unlike standard TN panels, IPS displays gives you remarkably crisp images with vivid colours, making it ideal not only for Photos, films and web browsing, but also for professional applications that demand colour accuracy and consistent brightness at all times.

Ultra-narrow Border



The new Philips displays feature ultra-narrow borders which allow for minimal distractions and maximum viewing size. Especially suited for multi-display or tiling setups like gaming, graphic design and professional applications, the ultra-narrow border display gives you the feeling of using one large display.

16:9 Full HD display



Picture quality matters. Regular displays deliver quality, but you expect more. This display

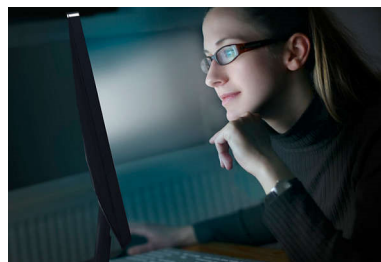
features enhanced Full HD 1920 x 1080 resolution. With Full HD for crisp detail paired with high brightness, incredible contrast and realistic colours, expect a true-to-life picture.

SmartImage



SmartImage is an exclusive leading edge Philips technology that analyses the content displayed on your screen and optimises your display performance. This user-friendly interface allows you to select various modes, like Office, Photo, Movie, Game, Economy etc., to fit the application in use. Based on the selection, SmartImage dynamically optimises the contrast, colour saturation and sharpness of images and videos for ultimate display performance. The Economy mode option offers you major power savings. All in real time at the touch of a single button!

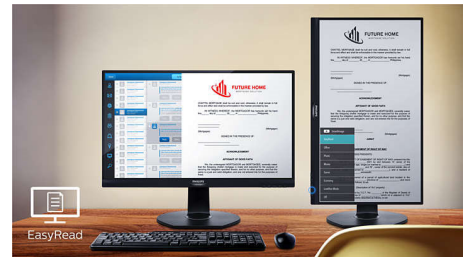
SoftBlue Technology



SoftBlue LED technology uses smart technology to reduce harmful shortwave blue light without affecting the colour or image of the display. SoftBlue LED technology is certified by international testing organisation TUV Rheinland to reduce harmful blue light.

223S7EYMB/00

EasyRead mode



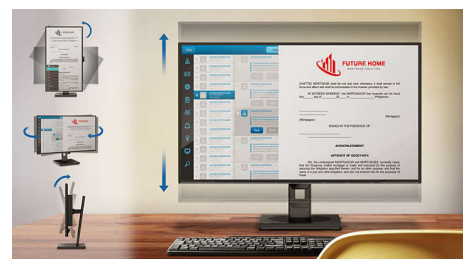
EasyRead mode for a paper-like reading experience

Flicker-Free technology



Due to the way brightness is controlled on LED-backlit screens, some users experience flicker on their screen which causes eye fatigue. Philips Flicker-Free technology applies a new solution to regulate brightness and reduce flicker for more comfortable viewing.

SmartErgoBase



The SmartErgoBase is a monitor base that delivers ergonomic display comfort and provides cable management. The base can swivel, tilt and rotate to various angles to ensure maximum comfort. The height-adjustable stand guarantees the optimal viewing level, reducing the physical strains of a long workday, while cable management reduces cable clutter and keeps the workspace neat and professional.



Specifications

Connectivity

- Signal Input: VGA (Analogue), DisplayPort 1.2
- Sync Input: Separate Sync, Sync on Green
- Audio (In/Out): PC audio-in, Headphone out

Picture/Display

- Panel Size: 21.5 inch/54.6 cm
- Aspect ratio: 16:9
- LCD panel type: IPS technology
- Backlight type: W-LED system
- Pixel pitch: 0.248 x 0.248 mm
- Optimum resolution: 1920 x 1080 @ 60 Hz
- Brightness: 250 cd/m²
- Display colours: 16.7 M
- Contrast ratio (typical): 1000:1
- SmartContrast: 20,000,000:1
- Response time (typical): 5 ms (Grey to Grey)*
- Viewing angle: 178° (H)/178° (V), @ C/R > 10
- Picture enhancement: SmartImage
- Effective viewing area: 476.1 (H) x 267.8 (V)
- Scanning Frequency: 30 - 83 kHz (H) / 56 - 76 Hz (V)
- sRGB
- SoftBlue
- Flicker-free
- Pixel Density: 102 PPI
- EasyRead

Convenience

- Built-in Speakers: 2 W x 2
- Plug and Play Compatibility: DDC/CI, Mac OS X, sRGB, Windows 10 / 8.1 / 8 / 7
- User convenience: SmartImage, Input, Volume, Menu, Power On/Off
- OSD Languages: Brazil Portuguese, Czech, Dutch, English, Finnish, French, German, Greek, Hungarian, Italian, Japanese, Korean, Polish, Portuguese, Russian, Simplified Chinese, Spanish, Swedish, Traditional Chinese, Turkish, Ukrainian
- Other convenience: Kensington lock, VESA mount (100 x 100 mm)
- Control software: SmartControl

Stand

- Height adjustment: 130 mm
- Pivot: 90 degree
- Swivel: -175/+175 degree
- Tilt: -5/25 degree

Power

- ECO mode: 10 W (typ.)

- Power supply: 100–240 VAC, 50–60 Hz, Built-in
- Off mode: <0.3 W (typ.)
- On mode: 13.52 W (typ.) (EnergyStar test method)
- Standby mode: <0.5 W (typ.)
- Power LED indicator: Operation - White, Standby mode - White (flashing)
- Energy Label Class: E

Dimensions

- Product with stand (mm): 490 x 455 x 202 mm
- Packaging in mm (W x H x D): 552 x 420 x 194 mm
- Product without stand (mm): 490 x 296 x 45 mm

Weight

- Product with packaging (kg): 6.56 kg
- Product with stand (kg): 4.51 kg
- Product without stand (kg): 2.63 kg

Operating conditions

- Altitude: Operation: +12,000 ft (3658 m), Non-operation: +40,000 ft (12,192 m)
- Temperature range (operation): 0°C to 40°C °C
- Relative humidity: 20%-80 %
- Temperature range (storage): -20°C to 60°C °C
- MTBF (demonstrated): 70,000 hrs (excluded backlight)

Sustainability

- Environmental and energy: EnergyStar 8.0, EPEAT*, TCO Certified, RoHS
- Recyclable packaging material: 100 %
- Specific Substances: PVC/BFR free housing, Mercury free

Compliance and standards

- Regulatory Approvals: CE Mark, FCC Class B, SEMKO, cETLus, CU-EAC, EPA, WEEE, UKRAINIAN, ICES-003, TUV/ISO9241-307, PSB, TUV Cert. — blue light cut-off

Cabinet

- Finish: Texture
- Foot: Black
- Front bezel: Black
- Rear cover: Black

What's in the box?

- Cables: D-Sub cable, DP cable, Audio cable, Power cable
- Monitor with stand
- User Documentation



Issue date 2024-04-24

Version: 8.0.1

EAN: 87 12581 74440 3

© 2024 Koninklijke Philips N.V.
All Rights reserved.

Specifications are subject to change without notice.
Trademarks are the property of Koninklijke Philips N.V.
or their respective owners.

www.philips.com

* "IPS" word mark / trademark and related patents on technologies belong to their respective owners.

* Response time value equal to SmartResponse

* EPEAT rating is valid only where Philips registers the product. Please visit <https://www.epeat.net/> for registration status in your country.