

Philips 2000 series
Wired keyboard-mouse
combo

Plug and play

Multimedia shortcuts
Silent design
Up to 1200 DPI

SPT6207W



Wired simplicity, compact design

This keyboard and mouse duo is equipped with responsive keys and convenient shortcuts that ensure durability, with features like its one-million-keystroke lifespan and splash-resistant design.

Advanced technology for ultimate performance

- Up to 1,200 DPI

Comfortable, accurate control

- Comfortable ergonomic mouse design feels great
- High-definition optical tracking for smooth control

Philips reliability

- Keys last millions of keystrokes for durability

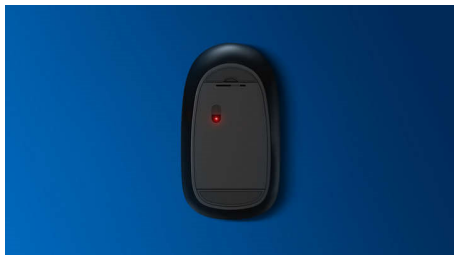
Designed for performance

- Convenient multi-media shortcuts
- Low-profile keys are quick and stylish looking

PHILIPS

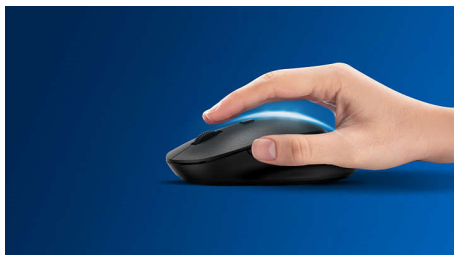
Highlights

Smooth optical tracking



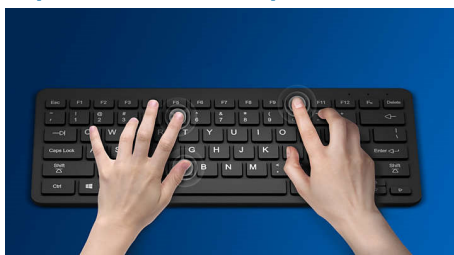
High-definition optical tracking for smooth control

Comfortable ergonomic design



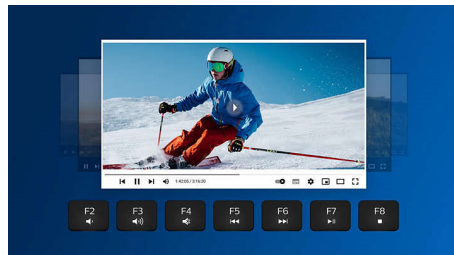
Comfortable ergonomic mouse design feels great

Keystrokes for durability



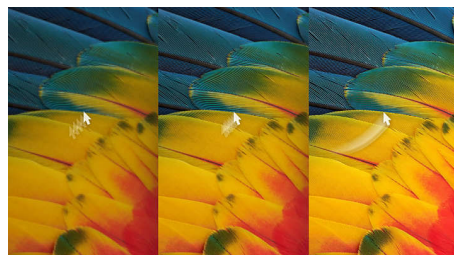
Keys last millions of keystrokes for durability

Multi-media shortcuts



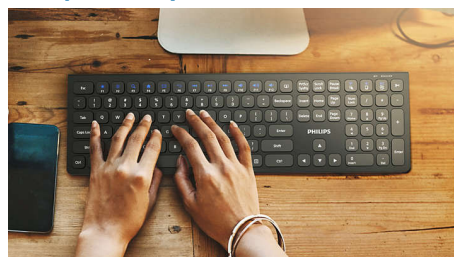
With these multi-media shortcuts, you can easily switch to music, volume or video play by a simple click.

Up to 1,200 DPI



This mouse delivers precision tracking up to 1,200 DPI with higher smoothing and accuracy.

Low-profile keys



The low-profile keys add a stylish look and are quick and responsive for typing.

Specifications

OS/System Requirements

- System Requirements: Microsoft Windows 7, Windows 8, Windows 10 or later; Linux V1.24 and above; Mac OS 10.5 and above

Physical Dimensions

- Dimensions (L x W x H): Keyboard: 433 x 136 x 22 mm Mouse: 110 x 65 x 35 mm
- Weight: Keyboard: 566 g Mouse: 83 g

Technical specifications

- Connectivity: USB 2.0 wired
- Product Type: Wired keyboard-mouse combo
- Keys: 110 keys
- Handed Type: Left- and right-handed mouse
- Front Panel Material - Keyboard: Plastics front panel
- Optical Sensor Precision-Mouse: 1200 DPI



Issue date 2024-04-01

Version: 5.0.1

EAN: 87 12581 78446 1

© 2024 Koninklijke Philips N.V.
All Rights reserved.

Specifications are subject to change without notice.
Trademarks are the property of Koninklijke Philips N.V.
or their respective owners.

www.philips.com