

Philips  
LCD monitor

140 cm (55")  
Autostereoscopic 3D  
Full HD

BDL5571VS



## Experience 3D with stunning depth

and 28 lenticular views

Broadcast your marketing messages in style with the slim bezel 140 cm (55") LCD display. An amazing 3D experience without glasses awaits, bringing a new level of cool to your marketing messages.

### **Stunning 3D experience**

- 3D content visualization
- 3D & 2D dual mode display
- 3D system solution

### **Optimized for public viewing**

- Full HD LCD display, 1920x1080p
- Slim bezel design for a stylish look

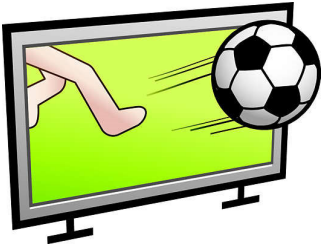
### **Operational flexibility**

- Autostereoscopic 3D
- 120 Hz Panel
- Module for DVI out capabilities
- Many Functions. One Wire
- Display Port for faster graphics support
- Network Controllability: RJ45
- Smart insert in the backcover to place a small pc

# PHILIPS

# Highlights

## Autostereoscopic 3D



Enjoy a stunning 3D experience with no need for special glasses thanks to the autostereoscopic 3D effect. Using lenticular technology, it gives excellent clarity and depth, making your 3D experience even more lifelike and enjoyable.

## 3D content visualization

Software tools are provided with the display to play-out 3D content and control the 3D and 2D visualization parameters. The actual 3D content can be created via plug-ins available for popular 3D animation software packages. Existing 2D or stereo content can be converted into 2D-plus-Depth format. The 2D-plus-Depth format is compatible with existing compression tools, as the additional bandwidth of the depth is small.

## 3D & 2D dual mode display

The display can be applied in a broad range of applications since it can be operated in in both 2D and 3D mode. The 4K UHD resolution panel enables great picture quality and true color representation in 2D and 3D mode. The integrated rendering core offers content creators and end-users full control over the quality and depth-effect characteristics of the picture.

## 3D system solution

The system solution is designed for maximum reuse of content / concepts from the 2D signage industry. The key enabler for this is the flexible 2D-plus-Depth format that allows decoupling of content creation and content visualization. The rendering core integrated in the autostereoscopic 3D displays supports the unique Declipse image format which enables a true look-around 3D effect.

## Display Port

Enjoy crystal clear images with the high-bandwidth graphics support of the Display Port. As well as transmitting full high-definition video the Display Port will also transmit audio, thus eliminating the need for extra cables.

## Optional DVI Module

Create a digital video wall of up to 9 displays in a 3 x 3 configuration with the optional DVI module. Simply slide the module in to the open slot on the side of the display, then connect the DVI out port to a DVI in of another display to create the most stunning video wall experience around.

## 120 Hz Panel

Enjoy stunningly clear video images thanks to the 120 Hz panel. Even fast moving action scenes can be seen with no blur, enhancing your viewing experience.

## Smart Insert

Professional PC's are part of most public signage installations. Quite often they increase the overall depth to the display and cause a lot of cable clutter. So we have designed this display with Smart insert in the back cover which is ideal for the integration of a professional small form factor PC. On top of

that, the cable management system offers a great solution to keep your cables neat and professional looking.

## One Wire

Take full control of your display by running all operational commands as well as your video signal through just one single HDMI cable. This unique feature makes it so much easier and more convenient to ensure the smooth running and maintenance of your display. Consumer Electronics Control (CEC) commands make finding out vital information about your display absolute childsplay.

## RJ45

Simple management of your display is available thanks to the introduction of a LAN (RJ45) port. You can configure each display or find out the status of each device quickly and conveniently via an RJ45 connection.

## Slim bezel

A slim bezel design adds a stylish look to a public display to nicely blend in just about any environment. Furthermore this design makes the display ideal for tiled matrix video walls.

## Full HD LCD display 1920x1080p

This display has a resolution that is referred to as Full HD. The state-of-the-art LCD screen technology has the full high-definition widescreen resolution of 1080 progressive lines, each with 1920 pixels. This allows the best possible picture quality for HD input signals with up to 1080 lines. It produces brilliant flicker-free progressive scan pictures with optimum brightness and superb colors. This vibrant and sharp image will provide you with an enhanced viewing experience.



# Specifications

## Picture/Display

- Diagonal screen size (metric): 140 cm
- Diagonal screen size (inch): 55 inch
- Aspect ratio: 16:9
- Panel resolution: 1920x1080p
- Pixel pitch: 0.63 x 0.63 mm
- Optimum resolution: 1920 x 1080 @ 60Hz
- Brightness: 700 cd/m<sup>2</sup>
- Display colors: 1.06 Billion colors
- Contrast ratio (typical): 1300:1
- Response time (typical): 10 ms
- Viewing angle (horizontal): 150 degree
- Viewing angle (vertical): 150 degree
- Picture enhancement: 3/2 - 2/2 motion pull down, 3D Combfilter, Motion compens. deinterlacing, Progressive scan, 3D MA deinterlacing, Dynamic contrast enhancement
- Display technology: 120 Hz Panel
- 3D Technology: Autostereoscopic 3D display, Fixed Lenticular 3D Technology, Input Format: 2D plus depth

## Connectivity

- PC: VGA-in D-Sub 15HD, VGA-out D-Sub 15HD, DVI-D x1, RS232 D-Sub9, RS232 D-sub9 output, 3.5 mm PC audio input x1, RJ45
- AV input: HDMI x1, Audio (L/R) x2, Component (BNC) x1
- AV output: Audio (L/R) x1
- Other connections: Display Port, AC-out, External loudspeaker connector

## Convenience

- Placement: Landscape
- Picture in picture: PBP, PIP, POP
- Screen saving functions: Pixel shift, Low bright
- Keyboard control: Hidden, Lockable
- Remote control signal: Lockable
- Signal loop through: RS232, VGA, DVI (Optional)
- Ease of installation: AC Out, Carrying Handles, Smart Insert
- Energy saving functions: Ambient light sensor, Smart Power
- Safety control functions: Heat Control, Temperature Sensor
- Picture performance: Advanced color control
- Network controllable: RS232, RJ45
- Packaging: Reusable box

## Sound

- Built-in speakers: 2 x 12 W (8 ohm)

## Power

- Consumption (On mode): Typ. 214W
- Standby power consumption: <math>\leq 1W</math> (One Wire and RS232 active)

## Dimensions

- Bezel thickness: 19.5mm/0.8"
- Smart Insert mount: 300 x 320 x 64
- Set height (with stand): 773.2 mm
- Smart insert in inch (WxHxD): 11.81 x 11.89 x 2.52
- Set height (with stand) (inch): 30.4 inch
- Set Width: 1252.1 mm
- Product weight: 80 kg
- Set depth (with stand): 405.1 mm
- Set Height: 722.9 mm
- Set Depth: 121.8 mm
- Set depth (with stand) (inch): 15.95 inch
- Set Width (inch): 49.3 inch
- Set Height (inch): 28.5 inch
- Wall Mount: 400x400mm (Set), 100x100mm (Smart insert)
- Set Depth (inch): 4.8 inch
- Product weight (lb): 176 lb

## Product dimensions

- Width: 125 cm
- Height: 72.29 cm
- Depth: 12.3 cm
- Weight: 26.4 kg
- Height (with stand): 102.2 cm
- Depth (with stand): 42.3 cm
- Weight (with stand): 55.5 kg

## Operating conditions

- Temperature range (operation): 0 - 40 °C
- MTBF: 60,000 hour(s)
- Relative humidity: 5 - 90 %

## Accessories

- Included accessories: Remote Control, Batteries for remote control, AC Power Cord, VGA cable, User manual on CD-ROM, Quick start guide, 3D software

## Miscellaneous

- On-Screen Display Languages: English, French, German, Italian, Polish, Turkish, Russian, Simplified Chinese
- Warranty: Europe/North America: 1 year
- Regulatory approvals: CE, RoHS

## Packaging dimensions

- Height: 105 cm
- Width: 167 cm
- Depth: 30 cm
- Nett weight: 38.7 kg
- Gross weight: 42.3 kg
- Tare weight: 3.6 kg
- EAN: 87 12581 62642 6
- Number of products included: 1
- Packaging type: Carton



Issue date 2024-03-24

Version: 7.3.2

EAN: 87 12581 62642 6

© 2024 Koninklijke Philips N.V.  
All Rights reserved.

Specifications are subject to change without notice.  
Trademarks are the property of Koninklijke Philips N.V.  
or their respective owners.

[www.philips.com](http://www.philips.com)