

Philips 5000 series  
Wireless keyboard-mouse  
combo

## 2.4GHz Wireless

Detachable palm rest  
Low-profile design  
Up to 3200 DPI (adjustable)

SPT6507B



# Performance meets comfort

Work in complete comfort and productivity with this keyboard and mouse combo. With its detachable palm rest, ergonomic mouse, and fast (2.4G) wireless connection, you can type relaxed and work with no cables in your way.

### Wireless convenience

- 2.4G wireless connection for a completely cordless workspace
- Intelligent power saving

### Designed with comfort in mind

- Ergonomic palm rest for extra comfort

### Advanced technology for ultimate performance

- Up to 3,200 DPI

### Designed for performance

- Convenient multi-media shortcuts
- Low-profile keys are quick and stylish looking

# PHILIPS

Wireless keyboard-mouse combo  
2.4GHz Wireless Detachable palm rest, Low-profile design, Up to 3200 DPI (adjustable)

# Highlights

## 2.4G wireless connection



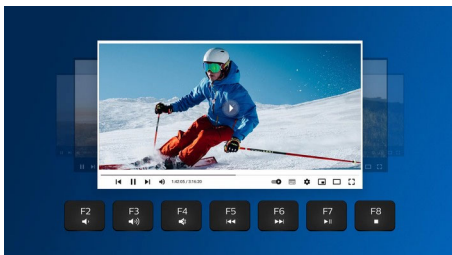
Keep the computer wires at bay. For any keyboard/mouse equipped with this feature, you can connect the accessory to any PC via a speedy 2.4Hz wireless connection. The simple setup process, along with the accessory's sleek design, is sure to leave your workspace looking clean and wire-free.

## Ergonomic palm rest



The palm rest helps position your hands comfortably on the keyboard, and offers a comfortable place to rest your palms when you are not typing.

## multi-media shortcuts



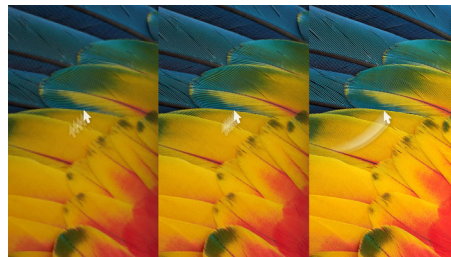
With these multi-media shortcuts, you can easily switch to music, volume, or video play by a simple click.

## Intelligent power saving



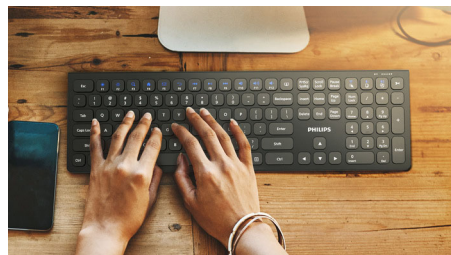
With the intelligent power saving function, this combo can go into standby and therefore save power when not in use.

## Up to 3,200 DPI



This mouse delivers 800/1200/1600/2400/3200 5 levels precision tracking. Up to 3,200 DPI gives higher smoothing and accuracy.

## Low-profile keys



The low-profile keys add a stylish look and are quick and responsive for typing.

SPT6507B/01

# Specifications

## Technical specifications

- Product Type: Wireless keyboard-mouse combo
- Connectivity: 2.4GHz wireless
- Front Panel Material-Keyboards: Plastics front-panel
- Keys: 110 keys
- Optical Sensor Precision-Mouse: 800-1200(Default)-1600-2400-3200 DPI
- Handed Type: Right-handed mouse

## Physical Dimensions

- Dimensions (LxWxH): Keyboard: 433 x 196 x 22 mm Mouse: 117 x 75 x 39 mm
- Weight: Keyboard: 739 g Mouse: 97 g

## OS/System Requirements

- System Requirements: Microsoft Windows 7, Windows 8, Windows 10 or later; Linux V1.24 and above; Mac OS 10.5 and above;



Issue date 2023-06-20

Version: 6.0.1

12 NC: 8670 001 79252  
EAN: 87 12581 77973 3

© 2023 Koninklijke Philips N.V.  
All Rights reserved.

Specifications are subject to change without notice.  
Trademarks are the property of Koninklijke Philips N.V.  
or their respective owners.

[www.philips.com](http://www.philips.com)