



Philips
LCD monitor with
SoftBlue Technology

E Line

24 (Viewable 23.6"/59.9 cm)
Full HD (1920 x 1080)



247E6ESW

SoftBlue Technology

developed for the wellbeing of your eyes

Designed for you: The elegant new Philips E-line monitor features new SoftBlue Technology for easy-on-the-eyes, brilliantly coloured images.

Elegant Design

- Elegant, slim design complements your home decor
- Modern Touch controls complement the design
- Superb glossy finish enhances your home decoration

Superb Picture Quality

- SmartControl Lite: For quick and easy display tuning
- SmartImage Lite for easy optimised image settings
- SmartContrast for deep black level details
- 16:9 Full HD display for crisp, detailed images
- IPS-ADS wide-view technology for image and colour accuracy
- SoftBlue Technology is easy on the eyes and maintains colour

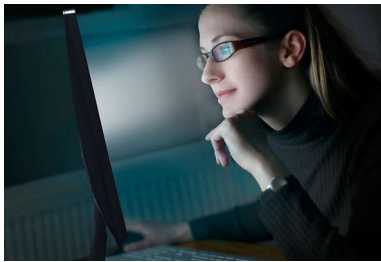
Greener every day

- Eco-friendly materials that meet international standards
- Mercury Free eco-friendly display
- Low power consumption saves energy bills

PHILIPS

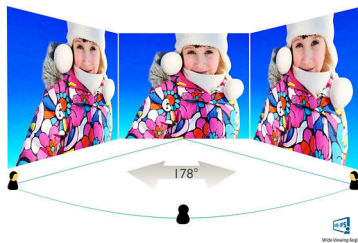
Highlights

SoftBlue Technology



SoftBlue LED technology uses smart technology to reduce harmful shortwave blue light without affecting the colour or image of the display. SoftBlue LED technology is certified by international testing organisation TUV Rheinland to reduce harmful blue light.

IPS-ADS technology



IPS-ADS displays use an advanced technology which gives you extra-wide viewing angles of 178/178 degrees, making it possible to view the display from almost any angle. Unlike standard TN panels, IPS-ADS displays give you remarkably crisp images with vivid colours, making them ideal not only for photos, movies and web browsing, but also for professional applications which demand colour accuracy and consistent brightness at all times.

16:9 Full HD display



Picture quality matters. Regular displays deliver quality, but you expect more. This display features enhanced Full HD 1920 x 1080

resolution. With Full HD for crisp detail paired with high brightness, incredible contrast and realistic colours, expect a true-to-life picture.

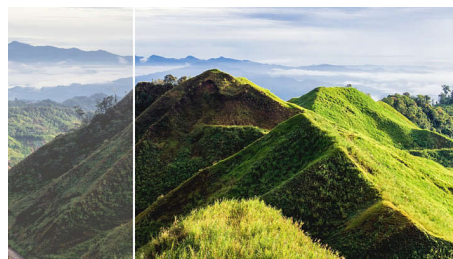
SmartImage Lite

SmartImage Lite is an exclusive, leading edge Philips technology that analyses the content displayed on your screen. Based on a scenario you select, SmartImage Lite dynamically enhances the contrast, colour saturation and sharpness of images and videos for ultimate display performance - all in real time with the press of a single button.

SmartControl Lite

SmartControl Lite is the next generation 3D icon-based GUI monitor control software. This allows the user to fine-tune most parameters of the monitor like Colour, Brightness, screen calibration, Multimedia, ID management etc. with the mouse.

SmartContrast



SmartContrast is a Philips technology that analyses the contents you are displaying, automatically adjusting colours and controlling backlight intensity to dynamically enhance contrast for the best digital images and videos or when playing games where dark hues are displayed. When Economy mode is selected, contrast is adjusted and backlighting fine-tuned for just-right display of everyday office applications and lower power consumption.

Slim design

Elegant, slim design complements your home decor

Modern Touch controls



Touch controls are intelligent, touch-sensitive icons that replace protruding buttons so the user can adjust the monitor to their requirements. Responding to your lightest touch, touch controls give the monitor a modern feel.

Low power consumption

Low power consumption saves energy bills

Mercury Free

Philips monitors with LED backlighting are free from Mercury, one of the most toxic natural substances, which affects humans and animals. This reduces the environmental impact of the display throughout its lifecycle, from manufacturing to disposal.

Eco-friendly materials

"Philips is committed to using sustainable, eco-friendly materials across its monitor range. All body plastic parts, metal chassis parts and packing materials use 100% recyclable materials. In some selected models we utilise up to 65% post-consumer recycled plastics. Strict adherence to RoHS standards ensures substantial reduction or elimination of toxic substances such as lead. Mercury content in monitors with CCFL backlight has been reduced significantly, while eliminated in monitors with LED backlight completely. Visit Philips @ <http://www.asimplyswitch.com/global/> to learn more."

Superb glossy finish

Superb glossy finish enhances your home decoration



Specifications

Connectivity

- Signal Input: VGA (Analogue), DVI-D (digital, HDCP)
- Sync Input: Separate Sync, Sync on Green

Picture/Display

- Panel Size: 23.6 inch/59.9 cm
- Aspect ratio: 16:9
- LCD panel type: IPS-ADS LCD
- Backlight type: W-LED system
- Pixel pitch: 0.2715 x 0.2715 mm
- Optimum resolution: 1920 x 1080 @ 60 Hz
- Brightness: 250 cd/m²
- Display colours: 16.7 M
- Contrast ratio (typical): 1000:1
- SmartContrast: 20,000,000:1
- Response time (typical): 5 ms (Grey to Grey)*
- Viewing angle: 178° (H)/178° (V), @ C/R > 10
- Picture enhancement: SmartImage Lite
- Effective viewing area: 521.28 (H) x 293.22 (V)
- Scanning Frequency: 30–83 kHz (H)/56–75 Hz (V)
- sRGB
- SoftBlue

Convenience

- Plug and Play Compatibility: DDC/CI, Mac OS X, sRGB, Windows 7, Windows 8
- User convenience: Power On/Off, Menu, 4:3/ Wide, Input, SmartImage Lite
- OSD Languages: Brazil Portuguese, Czech, Dutch, English, Finnish, French, German, Greek, Hungarian, Italian, Japanese, Korean, Polish, Portuguese, Russian, Simplified Chinese, Spanish, Swedish, Traditional Chinese, Turkish, Ukrainian
- Other convenience: Kensington lock

Stand

- Tilt: -5/20 degree

Power

- Power supply: External, 100–240 VAC, 50–60 Hz
- Off mode: 0.3 W (typ.)
- On mode: 14.74 W (typ.) (EnergyStar 6.0 test method)
- Standby mode: 0.5 W (typ.)
- Power LED indicator: Operation - White, Standby mode - White (flashing)

Dimensions

- Product with stand (mm): 561 x 429 x 212 mm
- Packaging in mm (W x H x D): 598 x 490 x 100 mm
- Product without stand (mm): 561 x 347 x 43 mm

Weight

- Product with packaging (kg): 4.90 kg
- Product with stand (kg): 3.65 kg
- Product without stand (kg): 3.27 kg

Operating conditions

- Altitude: Operation: +12,000 ft (3658 m), Non-operation: +40,000 ft (12,192 m)
- Temperature range (operation): 0°C to 40°C °C
- MTBF: 30,000 hour(s)
- Relative humidity: 20%–80% %
- Temperature range (storage): -20°C to 60°C °C

Sustainability

- Environmental and energy: EnergyStar 6.0, RoHS, Mercury Free
- Recyclable packaging material: 100 %

Compliance and standards

- Regulatory Approvals: BSMI, CE Mark, cETLus, FCC Class B, GOST, PSB, SASO, SEMKO, TUV/ISO9241-307, WEEE, CU-EAC, KUCAS

Cabinet

- Colour: White
- Finish: Glossy



Issue date 2024-03-24

Version: 5.0.1

EAN: 87 12581 73130 4

© 2024 Koninklijke Philips N.V.
All Rights reserved.

Specifications are subject to change without notice.
Trademarks are the property of Koninklijke Philips N.V.
or their respective owners.

www.philips.com

* Response time value equal to SmartResponse