

Philips
LCD monitor with Ultra
Wide-Color

E Line
27" (68.6 cm)
1920 x 1080 (Full HD)

276E7QDAB



Vivid, true-to-life colours

in an elegant design

This brilliant wide-view display with Ultra Wide-Color offers true-to-life colours wrapped in an elegance-inspired design for a light and fresh face in any home or office.

Elegant Design

- Elegant, slim design complements your home decor
- Superb glossy finish enhances your home decoration
- EasySelect menu toggle key for quick on-screen menu access

Experience immersive multimedia

- MHL technology for enjoying mobile content on a big screen
- Built-in stereo speakers for multimedia

Superb Picture Quality

- SmartImage Lite for easy optimised image settings
- SmartContrast for deep black level details
- 16:9 Full HD display for crisp, detailed images
- IPS LED wide view technology for image and colour accuracy
- Less eye fatigue with Flicker-Free technology
- Ultra Wide-Color wider range of colours for a vivid picture

PHILIPS

LCD monitor with Ultra Wide-Color
E Line 27" (68.6 cm), 1920 x 1080 (Full HD)

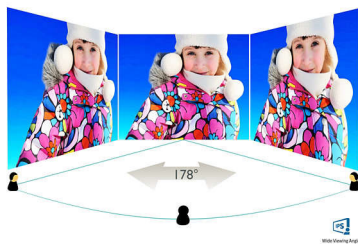
Highlights

Ultra Wide-Color Technology



Ultra Wide-Color Technology delivers a wider spectrum of colours for a more brilliant picture. The Ultra Wide-Color wider "colour gamut" produces more natural-looking greens, vivid reds and deeper blues. Bring media entertainment, images and even productivity more alive with vivid colours from Ultra Wide-Color Technology.

IPS technology



IPS displays use an advanced technology that gives you extra-wide viewing angles of 178/178 degrees, making it possible to view the display from almost any angle. Unlike standard TN panels, IPS displays give you remarkably crisp images with vivid colours, making them ideal not only for Photos, movies and web browsing, but also for professional applications that demand colour accuracy and consistent brightness at all times.

16:9 Full HD display



Picture quality matters. Regular displays deliver quality, but you expect more. This display

features enhanced Full HD 1920 x 1080 resolution. With Full HD for crisp detail paired with high brightness, incredible contrast and realistic colours, expect a true-to-life picture.

Flicker-Free technology



Due to the way brightness is controlled on LED-backlit screens, some users experience flicker on their screen which causes eye fatigue. Philips Flicker-Free technology applies a new solution to regulate brightness and reduce flicker for more comfortable viewing.

SmartContrast



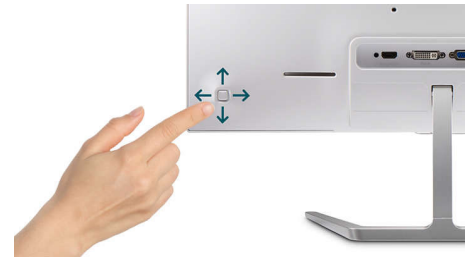
SmartContrast is a Philips technology that analyses the contents you are displaying, automatically adjusting colours and controlling backlight intensity to dynamically enhance contrast for the best digital images and videos or when playing games where dark hues are displayed. When Economy mode is selected, contrast is adjusted and backlighting fine-tuned for just-right display of everyday office applications and lower power consumption.

SmartImage Lite

SmartImage Lite is an exclusive, leading edge Philips technology that analyses the content displayed on your screen. Based on a scenario you select, SmartImage Lite dynamically enhances the contrast, colour saturation and sharpness of images and videos for ultimate display performance - all in real time with the press of a single button.

276E7QDAB/00

EasySelect Menu Toggle Key



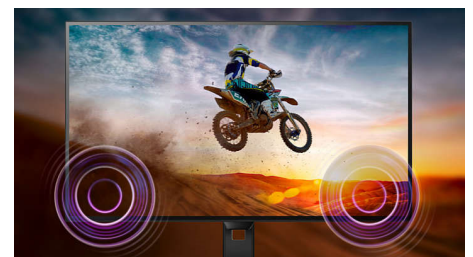
The discreetly placed EasySelect Menu Toggle Key allows you to make quick and easy adjustments to monitor settings in the On-Screen Display menu.

MHL technology



Mobile High-Definition Link (MHL) is a mobile audio/video interface for directly connecting mobile phones and other portable devices to high-definition displays. An optional MHL cable allows you to simply connect your MHL-capable mobile device to this large Philips MHL display and watch your HD videos come to life with full digital sound. Now not only can you enjoy your mobile games, photos, movies or other apps on its big screen, you can simultaneously charge your mobile device so you never run out of power halfway.

Built-in stereo speakers



A pair of high-quality stereo speakers built into a display device. They may be visible front firing, or invisible down firing, top firing, rear firing etc. depending on model and design.



Specifications

Connectivity

- Signal Input: VGA (Analogue), DVI-D (digital, HDCP), MHL-HDMI (digital, HDCP)
- Sync Input: Separate Sync, Sync on Green
- Audio (In/Out): PC audio-in, Headphone out

Picture/Display

- Panel Size: 27 inch/68.6 cm
- Aspect ratio: 16:9
- LCD panel type: IPS technology
- Backlight type: W-LED system
- Pixel pitch: 0.311 x 0.311 mm
- Optimum resolution: 1920 x 1080 @ 60 Hz
- Brightness: 250 cd/m²
- Display colours: 16.7 M
- Colour gamut (typical): NTSC 104.4% (CIE 1976)*
- Contrast ratio (typical): 1000:1
- SmartContrast: 20,000,000:1
- Response time (typical): 5 ms (Grey to Grey)*
- Viewing angle: 178° (H)/178° (V), @ C/R > 10
- Picture enhancement: SmartImage Lite
- Effective viewing area: 597.9 (H) x 336.3 (V)
- Scanning Frequency: 30–83 kHz (H)/56–76 Hz (V)
- sRGB
- MHL: 1080P @ 30 Hz
- Flicker-free

Convenience

- Built-in Speakers: 3 W x 2
- Plug and Play Compatibility: DDC/CI, Mac OS X, sRGB, Windows 8.1 / 8 / 7
- User convenience: Power On/Off, Menu, Volume (HDMI Audio out), Input, SmartImage Lite
- OSD Languages: Brazil Portuguese, Czech, Dutch, English, Finnish, French, German, Greek, Hungarian, Italian, Japanese, Korean, Polish, Portuguese, Russian, Simplified Chinese, Spanish, Swedish, Traditional Chinese, Turkish, Ukrainian
- Other convenience: Kensington lock, VESA mount (100 x 100 mm)

Stand

- Tilt: -5/20 degree

Power

- Power supply: External, 100–240 VAC, 50–60 Hz
- Off mode: 0.3 W (typ.)
- On mode: 17.03 W (typ.) (EnergyStar 7.0 test method)
- Standby mode: 0.5 W (typ.)
- Power LED indicator: Operation - White, Standby mode - White (flashing)

Dimensions

- Product with stand (mm): 616 x 468 x 179 mm
- Packaging in mm (W x H x D): 676 x 544 x 113 mm
- Product without stand (mm): 616 x 370 x 52 mm

Weight

- Product with packaging (kg): 6.81 kg
- Product with stand (kg): 4.33 kg
- Product without stand (kg): 4.08 kg

Operating conditions

- Altitude: Operation: +12,000 ft (3658 m), Non-operation: +40,000 ft (12,192 m)
- Temperature range (operation): 0°C to 40°C °C
- MTBF: 50,000 (excluding backlight) hour(s)
- Relative humidity: 20–80% %
- Temperature range (storage): -20°C to 60°C °C

Sustainability

- Environmental and energy: EnergyStar 7.0, RoHS, Mercury Free
- Recyclable packaging material: 100 %

Compliance and standards

- Regulatory Approvals: CE Mark, FCC Class B, CU-EAC, TCO Certified, TUV/ISO9241-307, VCCI, RCM, WEEE, CEC

Cabinet

- Colour: Black
- Finish: Glossy

What's in the box?

- Cables: VGA, Audio, Power
- Monitor with stand
- User Documentation



Issue date 2024-04-29

Version: 5.0.1

EAN: 87 12581 74041 2

© 2024 Koninklijke Philips N.V.
All Rights reserved.

Specifications are subject to change without notice.
Trademarks are the property of Koninklijke Philips N.V.
or their respective owners.

www.philips.com

* This Philips display is MHL-certified. However, if your MHL device does not connect or work correctly, check with your MHL device FAQ or vendor directly for instructions. The policy of your device manufacturer may require you to purchase its brand-specific MHL cable or adapter in order for it to work.

* Requires optional MHL-certified mobile device and MHL cable (not included). Please check with your MHL device vendor for compatibility.

* Standby/Off energy saving of ErP is not applicable for the MHL charging functionality.

* For a complete list of MHL-enabled products, refer to www.mhlconsortium.org

* HDMI cables vary depending on region and models.

* Response time value equal to SmartResponse

* NTSC 85% (CIE1931), sRGB: 122.9%

* "IPS" word mark / trademark and related patents on technologies belong to their respective owners.