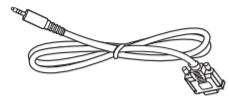
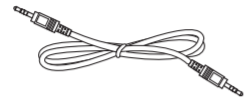


Power cord



RS232



RS232 Daisy Chain Cable



Logo



x 8



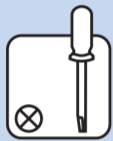
x 2



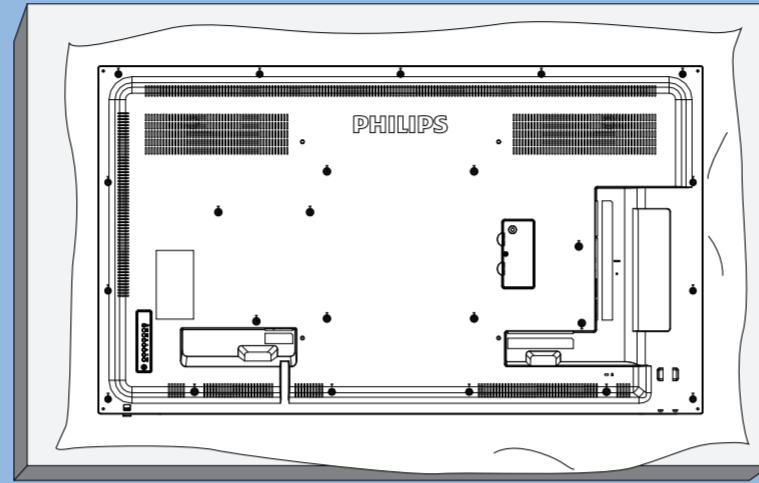
x 1

* Differences according to regions.

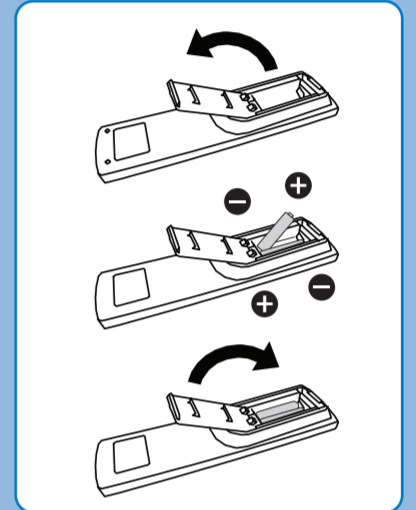
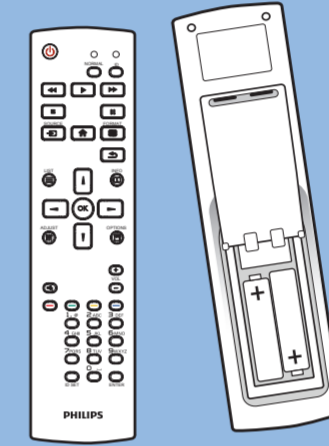
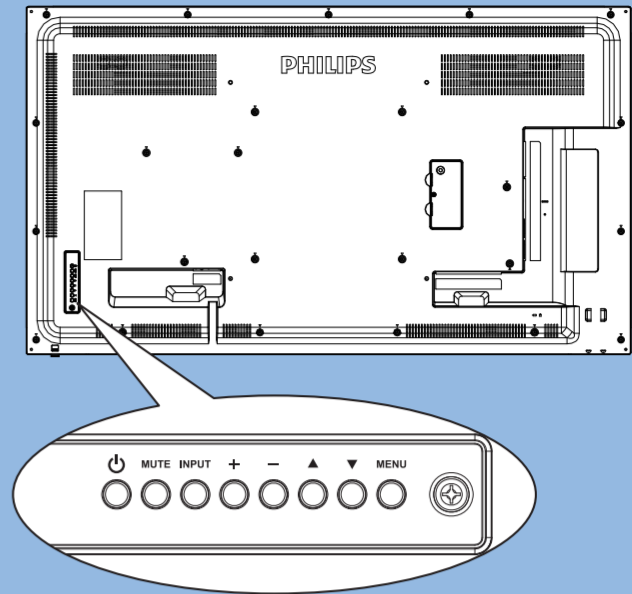
Display design and accessories may differ from those illustrated above.



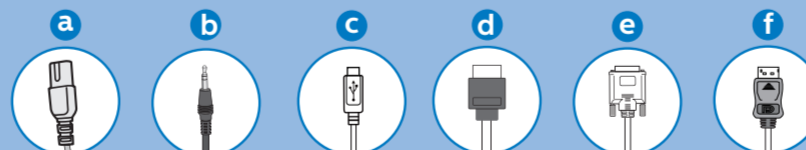
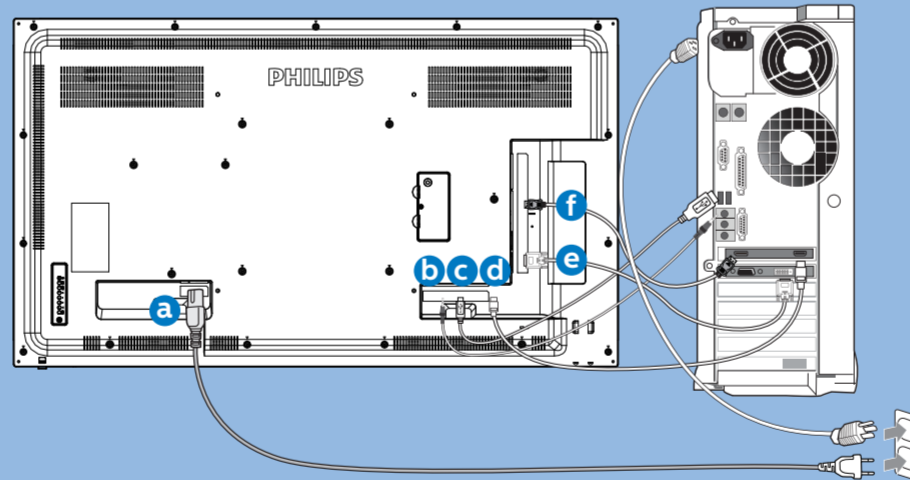
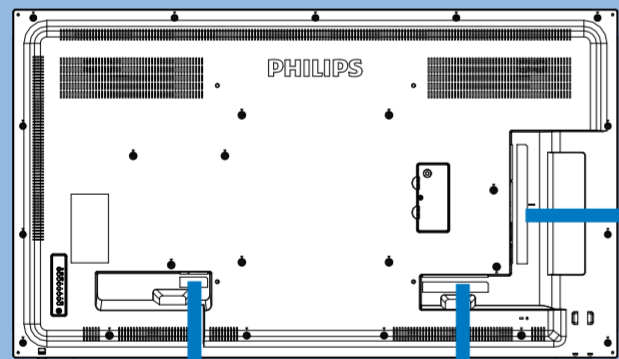
1



2



3



a

b

c

d

e

f

AC IN

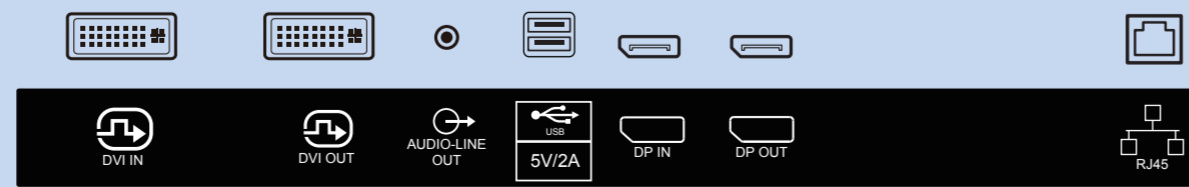
AUDIO

Touch USB

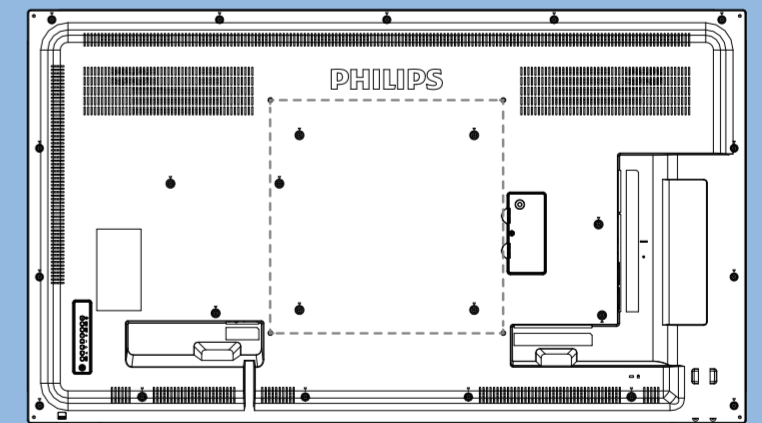
HDMI

DVI

DP



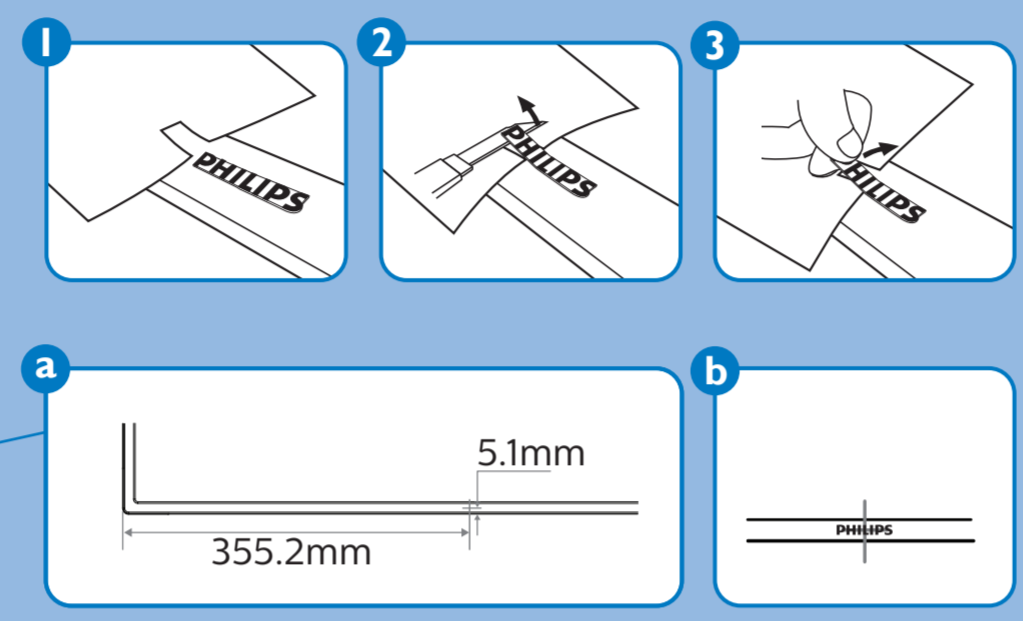
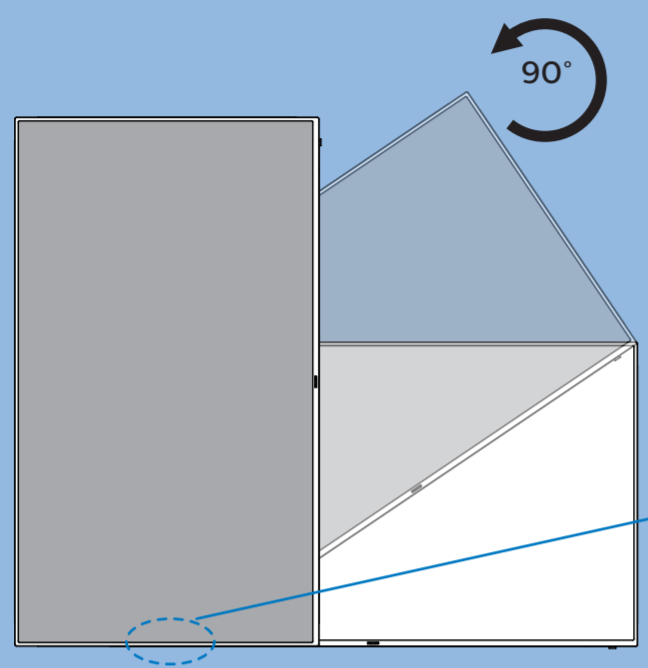
4



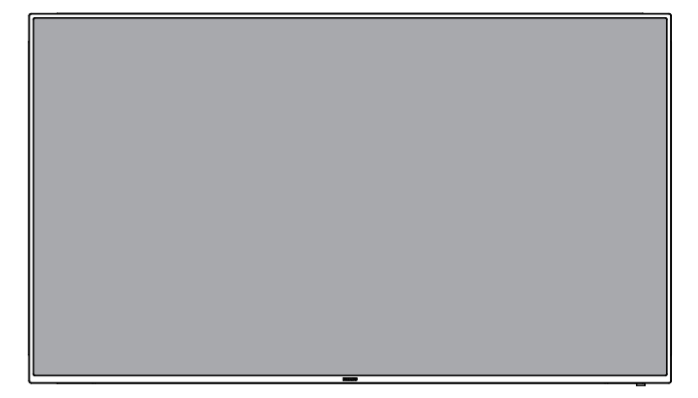
M6 * (10+X) mm
(X=Thickness of Wall mount BKT)

55BDL4031D: 400mmx400mm

5



PHILIPS
D line
55BDL4031D



Quick Start



Please check out the website below for more product information.
www.philips.com/signagesolutions-support



Envision Peripherals Inc.
490 N McCarthy Blvd, Suite #120
Milpitas, CA 95035
USA

© 2019 Koninklijke Philips N.V. All rights reserved.
Philips and the Philips Shield Emblem are registered
trademarks of Koninklijke Philips N.V. and are used under
license from Koninklijke Philips N.V.

Specifications are subject to change without notice.

Version: V1.00 2019-05-23

