



Philips
Professional LCD TV

81 cm (32")
LCD
High Definition

32HFL3330D

The Affordable Hospitality TV

Philips HD LCD TV for Hospitality

This professional LCD TV provides Philips unique Five Star Service and Smart Hotel Mode, convenient set up, and advanced programming features not found on retail televisions, making it ideal for hotels with no pay-per-view system

Best total cost of ownership

- Energy Star certified
- Five Star Service - two-year advanced exchange warranty
- On-shore 24/7 help desk

Sustainable and safe

- Eco-sensitive materials and packaging
- Lead-free/RoHS compliant with flame retardant housing

Designed for hotel use

- Smart Hotel Mode
- USB cloning of all settings for quick installation
- SmoovieTV[®] prepaid premium TV solution
- SmartStand

Differentiating guest experience

- Full connectivity with multiple HDMI inputs

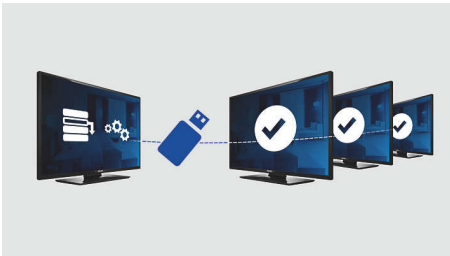
PHILIPS

Highlights

Smart Hotel Mode

Allows configuration of the TV for limited access, ideal for hotel use. Access to the user menu can be blocked, which enables you to specify channel, picture, and sound settings which your guest will be unable to modify. Picture and sound preferences may be selected from presets on the remote, offering guest selection, but never overwriting your defined settings. Switch on and maximum volume can also be specified so the set always turns on and operates at a comfortable volume. Channels can be blanked to prevent access to premium or adult content. Includes a forced power on mode.

USB Cloning



Provides the ability to easily copy all programming and channel programming settings from one TV into other TV sets in less than a minute. The feature ensures uniformity between TV sets and significantly reduces installation time and costs.

SmovieTV® prepaid solution

Philips commercial televisions now support SmovieTV®, a completely new way to offer in-room programming optimized for hotels that traditionally have not been able to charge for such amenities due to their size or budget. Simple to use, SmovieTV® requires no expensive head-end equipment or in-room control boxes.

SmartStand

This TV comes with a swivel stand that allows your guests to adjust the TV up to 180 degrees so that they can watch TV from any position in the room. Equipped with built-in security, this stand can be secured to a table or furniture to deter theft.

Five Star Service

Philips offers unmatched commitment to keeping your guest rooms in working order. Our products are so reliable that we offer a two-year advanced exchange warranty. In the event that something does go wrong, we guarantee to ship a replacement set to you, within 72 hours during the first year.

On-shore 24/7 help desk

Your hotel never closes, and neither do we. We offer a 24/7 Help Desk staffed by knowledgeable and friendly personnel to help

you with any aspect of your Philips TV install or use.

Energy Star certified

This Philips television meets Energy Star guidelines for reduced power consumption. This saves you money over the life of the television.

RoHS & Flame retardant housing

In addition to being lead-free and RoHS compliant, Philips TVs have a special housing of eco-friendly, non-brominated flame-retardant materials. Independent tests carried out by emergency fire services have shown that whereas TVs can sometimes intensify fires caused by external sources, Philips TVs will not contribute to the fire.

Eco-sensitive materials

Philips TVs are designed and produced according to our EcoDesign principles aimed at minimizing overall environmental impact, through lower power consumption, removal of hazardous substances, lower weight, more efficient packaging and better recyclability.

Multiple HDMI inputs

With multiple HDMI, Dual Component, S-VHS, CVBS, and Coax connections, this set will work with any of today's advanced sources.

Specifications

Picture/Display

- Aspect ratio: Widescreen
- Diagonal screen size (inch): 32 inch
- Diagonal screen size (metric): 81 cm
- Panel resolution: 1366 x 768p
- Brightness: 500 cd/m²
- Picture enhancement: Progressive scan, 3/2 - 2/2 motion pull down, 3D Combfilter, Dynamic contrast enhancement, Digital Crystal Clear
- Contrast ratio (typical): 1200:1
- Display screen type: LCD WXGA Active Matrix TFT
- Dynamic screen contrast: 26000:1
- Response time (typical): 8 ms
- Viewing angle (horizontal): 178 degree
- Viewing angle (vertical): 178 degree
- Screen enhancement: Anti-Reflection coated screen

Supported Display Resolution

- Computer formats: 1024 x 768, 60Hz, 1360 x 768, 60Hz, 640 x 480, 60Hz, 720 x 480, 60Hz, 800 x 600, 60Hz
- Video formats: 480i, 60Hz, 480p, 60Hz, 720p, 60Hz, 1080i, 60Hz

Tuner/Reception/Transmission

- Aerial Input: 75 ohm F-type
- Tuner bands: Hyperband, S-Channel, UHF, VHF
- TV system: ATSC, NTSC
- Cable: Unscrambled Digital Cable QAM
- Video Playback: NTSC

Convenience

- Ease of Installation: Autostore, PLL Digital Tuning, Plug & Play, Cloning of TV settings via USB, Keyboard lock-out
- Ease of Use: Side Control, Auto Volume Leveller (AVL), Channel list
- Clock: On main display, Sleep Timer
- User convenience: Vchip and parental lock
- Screen Format Adjustments: Auto Format, 4:3, Movie expand 16:9, Widescreen, Movie expand 14:9, Super Zoom
- Remote Control: TV
- Interactive hotel features: Smovie Pay TV

Sound

- Output power (RMS): 2 x 5W
- Sound System: Dolby Digital (AC-3)
- Sound Enhancement: Incredible Surround

Loudspeakers

- Built-in speakers: 2

Connectivity

- AV 1: Audio L/R in, YPbPr
- AV 2: Audio L/R in, YPbPr
- Audio Output - Digital: Coaxial (cinch)
- AV 3: HDMI
- EasyLink (HDMI-CEC): One touch play, Power status, System info (menu language), System standby
- AV 4: HDMI
- Front / Side connections: Audio L/R in, CVBS in, S-video in, USB, HDMI
- Other connections: Serial Express

Power

- Mains power: 90 - 110V, 50/60Hz
- Ambient temperature: 5 °C to 40 °C
- Power consumption: 150 W
- Standby power consumption: ≤ 0.3 W

Green Specifications

- Safety: Flame retardant housing
- Eco Designed
- Energy Star 3.0
- SmartPower²

Accessories

- Included accessories: Remote Control, Quick start guide, Warranty Leaflet, Swivel stand with anti-theft, Power cord (1.8m)
- Optional accessories: Set up Remote RC2573GR

Dimensions

- Wall mount compatible: 200 x 200 mm
- Set Width (inch): 31.9 inch
- Set Height (inch): 21.4 inch
- Set Depth (inch): 3.6 inch
- Product weight (lb): 30.8 (with stand), 24.2 (without stand) lb
- Set width (with stand) (inch): 31.9 inch
- Set depth (with stand) (inch): 8.7 inch
- Set height (with stand) (inch): 23.3 inch
- Box depth (inch): 9.3 inch
- Weight incl. Packaging (lb): 36.1
- Box height (inch): 24.8 inch
- Box width (inch): 38.5 inch



Issue date 2024-03-31

Version: 7.0.6

UPC: 6 09585 15769 9

© 2024 Koninklijke Philips N.V.
All Rights reserved.

Specifications are subject to change without notice.
Trademarks are the property of Koninklijke Philips N.V.
or their respective owners.

www.philips.com

* Five Star Advanced Exchange warranty is valid in the United States only. Local warranties govern sales in other countries.