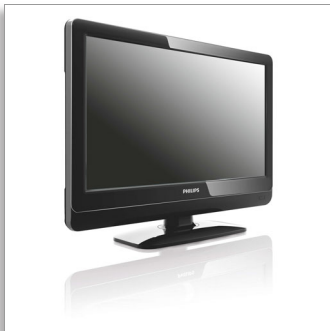




Philips  
Professional LCD TV

**22" Pro**  
LCD  
DVB-T MPEG2\*



**22HFL3331D**

## Advanced design at outstanding value

### Philips Digital Hospitality LCD TV

With this modern and energy efficient Hospitality TV, you will enjoy the benefits of digital television. Your guests will enjoy a warm welcome and great viewing experience with the attractive channel list.

#### Best total cost of ownership

- USB cloning of all settings for quick installation
- Installation menu locking

#### Sustainable and safe

- Eco-friendly design and flame-retardant housing

#### Differentiating guest experience

- Volume limitation
- One combined channel list for Analogue and Digital channels
- Easy-to-use Hospitality Remote Control
- Attractive channel list for easy navigation

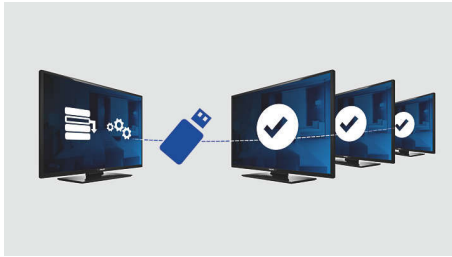
#### Advanced hotel features and future proof

- Welcome message on screen display
- Switch On Channel Programming
- HD LCD display, with a 1366 x 768p resolution

# PHILIPS

# Highlights

## USB Cloning



Provides the ability to easily copy all programming and channel programming settings from one TV into other TV sets in less than a minute. The feature ensures uniformity between TV sets and significantly reduces installation time and costs.

## Welcome message

A welcome greeting is displayed each time the TV set is switched on.

## Volume limitation

This feature predefines the volume range within which the TV set is allowed to operate, preventing excessive volume adjustments and disturbance of neighbouring guests.

## Installation menu locking

Prevents unauthorised access to installation and configuration settings, to ensure maximum guest convenience and avoid unnecessary reprogramming costs.

## One combined channel list

One integrated channel list for digital and analogue channels. This allows the guest to flick seamlessly between Analogue and Digital channels.

## Hospitality Remote Control

This stylish remote control is especially designed for hospitality usage. For an easy-to-use experience for the guest, the most important buttons and functions are conveniently placed on the remote. In addition, most Hospitality remote controls come with an anti-theft battery provision, a feature that contributes to efficient hotel operations.

## Eco-friendly design

Sustainability is integral to the way Philips does business. Philips TVs are designed and produced according to our EcoDesign principles aimed at minimising overall environmental impact, through lower power consumption, removal of hazardous

substances, lower weight, more efficient packaging and better recyclability. Philips TVs also have a special housing of flame-retardant material. Independent tests carried out by emergency fire services have shown that whereas TVs can sometimes intensify fires caused by external sources, Philips TVs will not contribute to a fire.

## Switch On Channel Programming

Perfect for in-house advertising or information channels as it allows a predefined channel to be shown when the TV is turned on.

## Attractive channel list

The attractive channel list includes clear and intuitive buttons with clear guiding graphics for easily finding your favourite channels.

## HD LCD display

This WXGA display with state-of-the-art LCD screen technology gives your guests widescreen HD resolution of 1366 x 768p pixels. It produces brilliant flicker-free progressive scan pictures with optimum brightness and superb colours. This vibrant and sharp image will provide your guests with an enhanced viewing experience.

# Specifications

## Picture/Display

- Aspect ratio: Widescreen
- Diagonal screen size (inch): 22 inch
- Diagonal screen size (metric): 56 cm
- Colour cabinet: High gloss black deco front with black cabinet
- Panel resolution: 1366 x 768p
- Brightness: 350 cd/m<sup>2</sup>
- Picture enhancement: 3/2 - 2/2 motion pull down, 3D Combfilter, Active Control, Colour Enhancement, Colour Transient Improvement, Digital Crystal Clear, Digital Noise Reduction, Progressive scan, Sharpness Adjustment, 3D MA deinterlacing, Automatic skin tone correction, Dynamic contrast enhancement, 1080p 24/25/30 Hz processing, 1080p 50/60 Hz processing
- Display screen type: LCD WXGA+ Active Matrix TFT
- Dynamic screen contrast: 5000:1
- Response time (typical): <5 ms
- Viewing angle: 170° (H)/160° (V)
- Peak Luminance ratio: 83 %
- Screen enhancement: Anti-Reflection coated screen

## Supported Display Resolution

- Computer formats: 640 x 480, 60 Hz, 800 x 600, 60 Hz, 1024 x 768, 60 Hz, 1280 x 1024, 60 Hz, 1280 x 720, 60 Hz, 1280 x 768, 60 Hz, 1360 x 768, 60 Hz
- Video formats: 480i, 60 Hz, 480p, 60 Hz, 576i, 50 Hz, 576p, 50 Hz, 1080i, 50, 60 Hz, 720p, 50, 60 Hz, 1080p, 24, 50, 60 Hz, 1080p, 24, 25, 30, 50, 60 Hz

## Tuner/Reception/Transmission

- Aerial Input: 75 ohm coaxial (IEC75)
- Tuner bands: Hyperband, S-Channel, UHF, VHF
- TV system: PAL I, PAL B/G, SECAM B/G, SECAM L/L', DVB COFDM 2K/8K
- Digital TV: DVB Terrestrial\*
- Number of Pre-set Channels: 250
- Video Playback: PAL, SECAM, NTSC

## Multimedia Applications

- Multimedia connections: USB
- Playback Formats: MP3, JPEG Still pictures, Slideshow files (.alb)

## Convenience

- Ease of Installation: Plug and Play, Advanced Hotel Mode, Automatic Tuning System (ATS), Fine Tuning, PLL Digital Tuning, Automatic Channel Install (ACI), Programme Name, Auto Programme Naming, Autostore, Cloning of TV settings via USB, Cloning of TV settings via RF, Installation menu locking, Security menu access, Keyboard lock-out
- Ease of Use: Auto Volume Leveller (AVL), 1 channel list analogue/digital, On-Screen Display, Programme List, Side Control, Graphical User Interface
- Clock: Sleep Timer
- Comfort: Hotel Guest features, Auto power on, Green/Fast startup, Welcome message, Switch on channel, Volume limitation, Sleep timer
- Screen Format Adjustments: 4:3, Movie expand 14:9, Movie expand 16:9, Widescreen, Subtitle Zoom, Super Zoom, Auto Format
- Electronic Programme Guide: 8-day Electronic Programme Guide, Now + Next EPG
- Remote Control: low battery detection, battery anti-theft protection
- Interactive hotel features: Block automatic channel update, Block over-the-air SW download
- Remote control type: 22AV1104 (RC6)
- Prison mode: Teletext and MHEG disable
- Teletext: 1000-page Hypertext
- Other convenience: Kensington lock
- Firmware upgradeable: Firmware upgradeable via USB, Firmware upgradeable via RF
- Teletext enhancements: Fast text, Programme information Line

## Healthcare

- Control: Multi remote control
- Safety: Double isolation Class II
- Convenience: Headphone out, Independent main speaker mute

## Sound

- Output power (RMS): 2 x 5 W
- Sound System: Nicam Stereo
- Sound Enhancement: Auto Volume Leveller, Incredible Surround, Smart Sound

## Loudspeakers

- Built-in speakers: 2

## Connectivity

- Number of HDMI connections: 1
- Audio Output - Digital: Coaxial (cinch)
- Number of Scarts: 1
- EasyLink (HDMI-CEC): One touch play, System standby
- Front/Side connections: Audio L/R in, CVBS in, USB 2.0
- Ext 1 Scart: Audio L/R, RGB
- HDMI 1: HDMI v1.3
- Other connections: S/PDIF out (coaxial), Composite video (CVBS) out, PC-in VGA + Audio L/R in, Monitor out L/R (Cinch), Common Interface
- Ext 3: Audio L/R in, YPbPr

## Power

- Mains power: 220-240 V, 50/60 Hz
- Ambient temperature: 5°C to 40°C
- Power consumption: 45 W
- Standby power consumption: 0.27 W
- Annual energy consumption: 61 kW h
- Presence of lead: Yes\*
- Mercury content: 11 mg

## Green Specifications

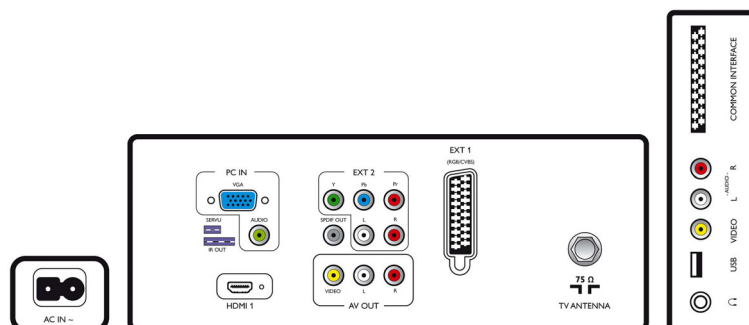
- Safety: Flame-retardant housing
- Low Power Standby
- SmartPower Eco

## Accessories

- Included accessories: Remote Control, Batteries for remote control, Power cord, Tabletop stand, Warranty Leaflet
- Optional accessories: Set up Remote RC2573GR, Wall mount (tilt) 22AV3100/10

## Dimensions

- Set Width: 541 mm
- Set Height: 375.3 mm
- Set Depth: 67.8 mm
- Product weight: 5.27 kg
- Set width (with stand): 541 mm
- Set height (with stand): 417.3 mm
- Set depth (with stand): 150 mm
- Product weight (+stand): 5.5 kg
- Box width: 590 mm
- Box height: 489 mm
- Box depth: 162 mm
- Wall-mount compatible: 100 x 100 mm



Issue date 2023-07-15

Version: 3.2.3

EAN: 87 12581 49340 0

© 2023 Koninklijke Philips N.V.  
All Rights reserved.

Specifications are subject to change without notice.  
Trademarks are the property of Koninklijke Philips N.V.  
or their respective owners.

[www.philips.com](http://www.philips.com)

\* For information on DVB-T enrolled countries, please ask your Philips contact.

\* Annual energy consumption is calculated using the typical power consumption of 4 hours per day, 365 days per year.

\* This television contains lead only in certain parts or components where no technology alternatives exist in accordance with existing exemption clauses under the RoHS Directive.