



Philips Momentum
4K HDR display with
Ambiglow

Momentum

43 (42.51" / 108 cm diag.)
3840 x 2160 (4K UHD)



436M6VBRAB

Get in the moment

The Momentum display with HDR and immersive Ambiglow lighting brings you to experience a new level of entertainment immersion. HDR technology with an expansive UHD display gives impeccable picture quality to reveal fine details.

Superb Picture Quality

- Ultra Wide-Color wider range of colors for a vivid picture
- High Dynamic Range (HDR) for more lifelike colorful visuals

Brilliant performance

- Ambiglow intensifies entertainment with halo of light
- Effortlessly smooth action with Adaptive-Sync technology
- Enhanced audio with DTS Sound™
- Low input lag reduces time delay between devices to monitor

Expand your viewing experience

- MultiView 4K for 4 systems on one screen
- UltraClear 4K UHD (3840x2160) resolution for precision

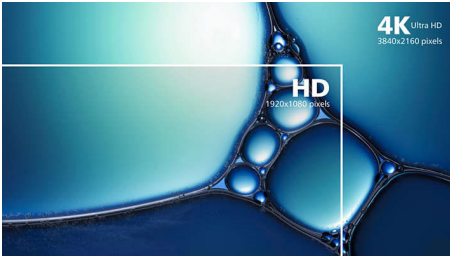
Designed for the way you work

- All your connections through one USB-C cable
- USB 3.0 Hub for convenient access and fast charging

PHILIPS

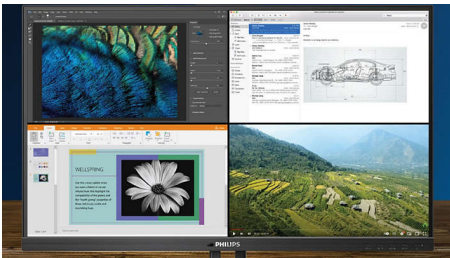
Highlights

UltraClear 4K UHD Resolution



These Philips displays utilize high performance panels to deliver UltraClear, 4K UHD (3840 x 2160) resolution images. Whether you are demanding professional requiring extremely detailed images for CAD solutions, using 3D graphics applications or a financial wizard working on huge spreadsheets, Philips displays will make your images and graphics come alive.

MultiView technology for 4K



Philips MultiView feature on this expansive 4K UHD display enables you to have up to four systems each shown in Full HD on one screen. You can use the Picture-by-Picture (PbP) for monitoring four systems on one screen for control rooms or security. Or for multiple devices like two notebooks side-by-side simultaneously, making collaboration more productive. Or Picture-in-Picture mode (PiP) watching a live football feed from your set-top box, while working on your PC.

High Dynamic Range (HDR)



High Dynamic Range delivers a dramatically different visual experience. With astonishing brightness, incomparable contrast and captivating color, images come to life with much greater brightness while also featuring much deeper, more nuanced darks. It renders a fuller palette of rich new colors never before seen on display, giving you a visual experience that engages your senses and inspires emotions.

Ultra Wide-Color Technology



Ultra Wide-Color Technology delivers a wider spectrum of colors for a more brilliant picture. Ultra Wide-Color wider "color gamut" produces more natural-looking greens, vivid reds and deeper blues. Bring, media entertainment, images, and even productivity more alive and vivid colors from Ultra Wide-Color Technology.

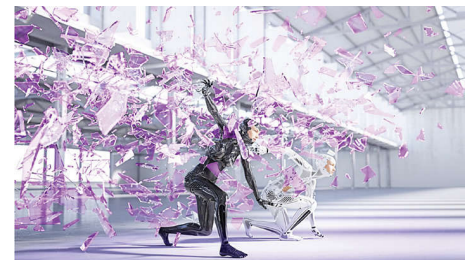
Ambiglow Technology



Ambiglow adds a new dimension to your viewing experience. The innovative Ambiglow

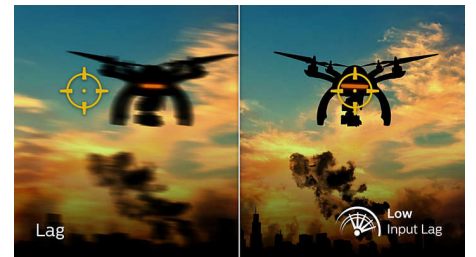
technology enlarges the screen by creating an immersive halo of light. Its fast processor analyses the incoming image content and continuously adapts the color and brightness of the emitted light to match the image. User friendly options allow you to adjust the ambiance to your liking. Especially suited for watching movies, sports or playing games, Philips Ambiglow offers you a unique and immersive viewing experience.

DTS Sound™



DTS Sound is an audio processing solution designed to optimize the playback of music, movies, streaming and games on the PC regardless of form factors. DTS Sound enables an immersive virtual surround sound experience, complete with rich bass and dialog enhancement and maximized volume levels free of any clipping or distortion.

Low Input Lag



Input lag is the amount of time that elapses between performing an action with connected devices and seeing the result on screen. Low input lag reduces the time delay between entering a command from your devices to monitor, greatly improve on playing twitch-sensitive video games, particularly important to whom plays fast-paced, competitive games.



Specifications

Connectivity

- Signal Input: VGA (Analog), DisplayPort 1.4 x 1, HDMI 2.0 x 2, USB-C (DP Alt mode)
- USB: USB 3.0x3 (1 w/fast charging)*
- Sync Input: Separate Sync, Sync on Green
- Audio (In/Out): PC audio-in, Headphone out

Picture/Display

- Panel Size: 42.51 inch / 108 cm
- Aspect ratio: 16:9
- LCD panel type: MVA
- Backlight type: W-LED system
- Pixel pitch: 0.245 x 0.245 mm
- Optimum resolution: 3840 x 2160 @ 60 Hz
- Brightness: 450 cd/m²
- Display colors: 1.07 billion colors (10 bit*)
- Color gamut (min.): BT. 709 Coverage: 100%*; DCI-P3 Coverage: 97.6%*
- Contrast ratio (typical): 4000:1
- SmartContrast: 50,000,000:1
- Response time (typical): 4 ms (Gray to Gray)*
- Viewing angle: 178° (H) / 178° (V), @ C/R > 10
- Picture enhancement: SmartImage
- Effective viewing area: 941.18 (H) x 529.42 (V)
- Scanning Frequency: 23 - 80 Hz (V) / 30 - 160 kHz (H)
- sRGB
- Flicker-free
- Pixel Density: 103.64 PPI
- LowBlue Mode
- Display Screen Coating: Anti-Glare, 3H, Haze 2%
- Adaptive sync
- HDR: DisplayHDR400 certified

Convenience

- Built-in Speakers: 7 W x 2 with DTS sound
- Plug & Play Compatibility: DDC/CI, Mac OS X, sRGB, Windows 10 / 8.1 / 8 / 7
- User convenience: Menu/OK, Input/Up, SmartImage Game/Return, Volume/Down, Power On/Off
- OSD Languages: Brazil Portuguese, Czech, Dutch, English, Finnish, French, German, Greek, Hungarian, Italian, Japanese, Korean, Polish, Portuguese, Russian, Simplified Chinese, Spanish, Swedish, Traditional Chinese, Turkish, Ukrainian
- Other convenience: Ambiglow, Low Input Lag, Kensington lock, VESA mount (200x200mm)

- Control software: SmartControl
- Remote control type: Philips RC6 remote control
- MultiView: PIP/PBP mode, 4x devices

Stand

- Tilt: -5/10 degree

Power

- Power supply: Internal, 100-240VAC, 50-60Hz
- Off mode: 0.3 W (typ.)
- On mode: 120 W (typ.)
- Standby mode: 0.5 W (typ.)
- Power LED indicator: Operation - White, Standby mode- White (blinking)

Dimensions

- Product with stand (mm): 976 x 661 x 264 mm
- Packaging in mm (WxHxD): 1090 x 764 x 338 mm
- Product without stand (mm): 976 x 574 x 63 mm

Weight

- Product with packaging (kg): 18.84 kg
- Product with stand (kg): 12.72 kg
- Product without stand (kg): 11.97 kg

Operating conditions

- Altitude: Operation: +12,000ft (3,658m), Non-operation: +40,000ft (12,192m)
- Temperature range (operation): 0 to 40 °C
- MTBF: 50,000 hrs (excluding backlight) hour(s)
- Relative humidity: 20%-80 %
- Temperature range (storage): -20 to 60 °C

Sustainability

- Environmental and energy: RoHS, Mercury Free, WEEE
- Recyclable packaging material: 100 %

Compliance and standards

- Regulatory Approvals: CCC, CECP, KC, KCC, PSE, VCCI, J-MOSS, BSMI, SEMKO, RCM, CE Mark, FCC Class B, EAC, cETLus, TUV/ISO9241-307, PSB, E-standby, SASO, CB, China RoHS, UKRAINIAN, Kuwait, KUCAS, ICES-003

Cabinet

- Color: Black
- Finish: Glossy / Textured



Issue date 2024-03-23

Version: 8.0.1

EAN: 87 12581 74887 6

© 2024 Koninklijke Philips N.V.
All Rights reserved.

Specifications are subject to change without notice.
Trademarks are the property of Koninklijke Philips N.V.
or their respective owners.

www.philips.com

* Response time value equal to SmartResponse
* Fast charging complies with USB BC 1.2 standard
* For Video transmission via USB-C, your Notebook/device must support USB-C DP Alt mode
* The monitor may look different from feature images.
* BT. 709 / DCI-P3 Coverage based on CIE1976
* 10 bit is dithered by 8 bit with FRC