

# PHILIPS

## EVNIA



QD OLED gaming  
monitor

Curved Gaming  
Monitor

Evnia 8000

34" (86.36 cm)

3440 x 1440 (WQHD)



34M2C8600

## Gaming beyond innovation

Be prepared to get stunned by the precise colour reproduction of the Evnia QD OLED gaming monitor. The innovative Ambiglow redefines what a gaming environment usually is. You won't miss a thing in your game with our curved display.

### Features designed for gamers' needs

- AI-enhanced Ambiglow: for intensified entertainment
- Evnia Precision Centre: Maximise Your Gaming Experience
- Dynamic Lighting: Synchronise lighting on all devices.
- Enhanced audio with DTS Sound™

### Built for fast action

- AMD FreeSync™ Premium Pro; smooth, low latency HDR gaming
- VESA ClearMR 9000: for the highest image quality

### Immersive visuals

- Ultra Wide-Color wider range of colours for a vivid picture
- Curved display design for a more immersive experience
- CrystalClear images with UltraWide QHD 3440 x 1440 pixels
- DisplayHDR™ True Black 400 delivers incredible shadow details
- True 10-bit display reproduces smoother gradients on visuals
- QD OLED for superior colours and vibrant visuals

# Curved Gaming Monitor

QD OLED gaming monitor

34M2C8600/00

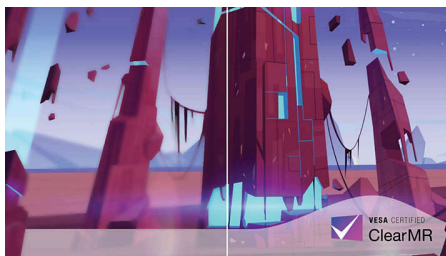
## Highlights

### QD OLED technology



QD-OLED represents a hybrid approach that marries OLED panels and quantum dot technology. By combining what's best of both, QD-OLED guarantees high contrast, deep blacks and unlimited viewing angles, with a higher peak brightness and more vibrant colours.

### VESA ClearMR 9000



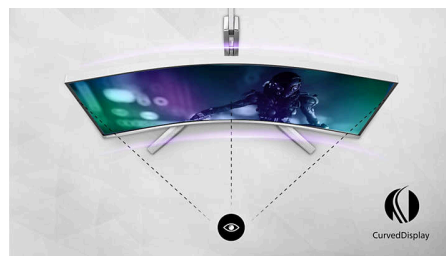
Previously, methods to test blurry image quality were measured through MRPT. VESA Certified ClearMR acts as an alternative to MRPT in which blur is tested with a digital high-speed camera. For monitors that are sent in and certified through VESA Certified ClearMR, you can rest assured that you will have an accurate assessment of the monitor's blur quality. Each certification is defined through a CMR range, with the highest tier being VESA ClearMR 9000. As this monitor is certified as ClearMR 9000, it has the highest classification of image quality, meaning the least amount of overall blur.

### Dynamic Lighting



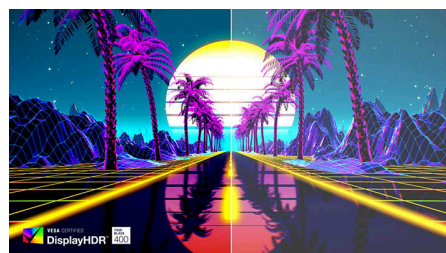
This feature is a Microsoft certification program that enables users with Windows 11 to synchronise and manage the RGB lighting of all of their monitors and peripherals from one menu. By doing this, the Dynamic Lighting feature creates a complete RGB lighting ecosystem with Philips Evnia Ambiglow across all devices that ultimately caters to a customisable user experience.

### Curved display design



Desktop monitors offer a personal user experience, which suits a curved design very well. The curved screen provides a pleasant yet subtle immersion effect, which focuses on you at the centre of your desk.

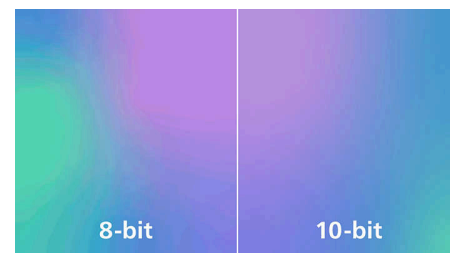
### DisplayHDR™ True Black 400



This Philips monitor is certified with VESA DisplayHDR™ True Black 400, delivering stunningly accurate shadow details with deeper

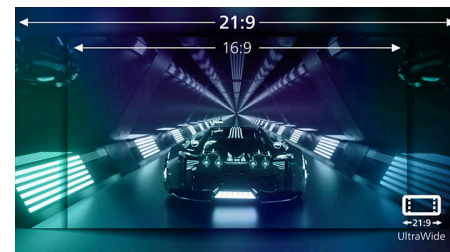
blacks for a remarkable visual experience compared with conventional monitors of the same peak luminance. This Philips monitor comes with several HDR modes, each optimised for your usage scenarios: HDR Game, HDR Movie, HDR Photo and VESA DisplayHDR-certified level.

### True 10-bit colour depth



With this Philips true 10-bit colour display, you can see colour-critical professional work of exceptional colour accuracy that meets professional standards. Compared with conventional 8-bit colour displays, this Philips monitor produces a more natural transition between hues for smoother gradients.

### UltraWide CrystalClear images



These Philips screens deliver Crystal Clear, UltraWide Quad HD 3440 x 1440 pixel images. Utilising high-performance panels with high-density pixel count and 178/178 wide viewing angles, these new displays will make your images and graphics come alive. The UltraWide 21:9 format enables more productivity with more room for side-by-side comparisons and more viewable spreadsheet columns. Whether you are a demanding professional requiring extremely detailed information for CAD-CAM solutions or a financial wizard working on huge spreadsheets, Philips displays deliver Crystal Clear images.

QD OLED

VESA CERTIFIED  
ClearMR 9000



CurvedDisplay

VESA CERTIFIED  
DisplayHDR True Black 400

WQHD

AMD  
FreeSync  
Premium Pro

DTS  
Sound

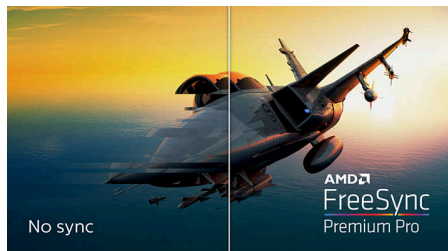
# Curved Gaming Monitor

QD OLED gaming monitor

34M2C8600/00

## Highlights

### AMD FreeSync™ Premium Pro



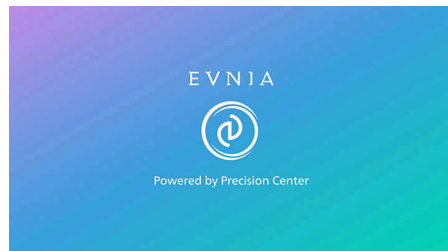
Gaming shouldn't be a choice between choppy gameplay or broken frames. AMD FreeSync™ Premium Pro provides the true HDR gaming experience: a combination of smooth gaming at peak performance and exceptional high dynamic range visuals while still maintaining low latency.

### DTS Sound™



DTS Sound is an audio-processing solution designed to optimise the playback of music, movies, streaming and games on the PC regardless of form factors. DTS Sound enables an immersive virtual surround sound experience, complete with rich bass and dialogue enhancement and maximised volume levels free of any clipping or distortion.

### Evnia Precision Centre



Evnia Precision Centre is an easy-to-use software designed to optimise and personalise your Evnia monitor. Whether you're a casual or competitive gamer, it offers a wide range of customisation options to match your unique gaming style. With intuitive controls and seamless navigation, Evnia Precision Centre gives you full control, providing everything you need to elevate your gaming to the next level — right at your fingertips.

### AI-enhanced Ambiglow



Our AI-enhanced processor analyses the incoming image content and continuously adapts the colour and brightness of the emitted light to match the image. This feature adds a new dimension to your viewing experience. The innovative Ambiglow uses its AI capabilities to

create a truly immersive and customisable gaming experience. From filling your gaming room with colour to feeling like you are part of the game, the AI-enhanced Ambiglow is made to make your gaming experience the best it's ever been by combining intelligence, colour and light.

### Ultra Wide-Color Technology



Ultra Wide-Color Technology delivers a wider spectrum of colours for a more brilliant picture. The Ultra Wide-Color wider "colour gamut" produces more natural-looking greens, vivid reds and deeper blues. Bring media entertainment, images and even productivity more alive with vivid colours from Ultra Wide-Color Technology.



# Curved Gaming Monitor

QD OLED gaming monitor

34M2C8600/00

## Specifications

### Picture/Display

**Panel Size:** 34 inch/86.36 cm  
**Aspect ratio:** 21:9  
**Monitor Panel Type:** QD OLED  
**Pixel pitch:** 0.2315 x 0.2315 mm  
**Brightness:** SDR: 250 (APL 100%) nit, HDR: 450 (APL 10%) nit, HDR E/P: 1000 (APL 3%) nit  
**Display colours:** Colour support 1.07 billion colours (10-bit)  
**Colour gamut (typical):** NTSC 121.3%\*, sRGB 148.8%\*, Adobe RGB 97.8%\*  
**Colour gamut (min.):** DCI-P3: 99.3%\*  
**Contrast ratio (typical):** 1,000,000:1  
**SmartContrast:** Mega Infinity DCR  
**Response time (typical):** 0.03 ms (Grey to Grey)\*  
**Viewing angle:** 178° (H)/178° (V), @ C/R > 10000  
**Picture enhancement:** SmartImage game  
**Maximum resolution:** HDMI: 3440 x 1440 @ 100 Hz, DP/USB-C: 3440 x 1440 @ 175 Hz  
**Effective viewing area:** 800.1 (H) x 337.1 (V) - at a 1800R curvature\*  
**Scanning Frequency:** HDMI: 30 - 160 kHz (H)/48 - 100 Hz (V), DP/USB-C: 30 - 255 kHz (H)/48 - 175 Hz (V)  
**sRGB**  
**Delta E:** <2 (sRGB)  
**Flicker-free**  
**Pixel Density:** 109.68 PPI  
**LowBlue Mode**  
**Display Screen Coating:** Anti-reflection, 2H  
**Low Input Lag**  
**EasyRead**  
**Adaptive sync**  
**HDR:** DisplayHDR True Black 400 certified  
**Ambiglow:** 4 sided  
**Pixel format:** RGB Q-Stripe\*  
**Windows Dynamic Lighting**

### Connectivity

**Signal Input:** HDMI 2.0 x 2, DisplayPort 1.4 x 1, USB-C x 1 (DP Alt mode, Video, Data and Power Delivery)  
**Sync Input:** Separate Sync  
**Audio (In/Out):** Audio out  
**HDCP:** HDCP 1.4 (HDMI/DisplayPort/USB-C), HDCP 2.2 (HDMI/DisplayPort/USB-C), HDCP 2.3 (HDMI/DisplayPort/USB-C)  
**USB Hub:** USB 3.2 Gen 1 / 5 Gbps, USB-B upstream x 1, USB-A downstream x 4 (with 1 for fast charge B.C 1.2)

### Power Delivery

**Max power delivery:** USB-C up to 90 W (5 V/3 A, 7 V/3 A, 9 V/3 A, 10 V/3 A, 12 V/3 A, 15 V/3 A, 20 V/4.5 A)  
**Version:** USB PD version 3.0

### Convenience

**Built-in Speakers:** 5 W x 2, DTS  
**Plug and Play Compatibility:** DDC/CI, Mac OS X, sRGB, Windows 11/10/8.1/8/7  
**User convenience:** Power On/Off, Menu/OK, Input/Up, Game Settings/Down, SmartImage game/Back  
**OSD Languages:** Brazil Portuguese, Czech, Dutch, English, Finnish, French, German, Greek, Hungarian, Italian, Japanese, Korean, Polish, Portuguese, Russian, Spanish, Simplified Chinese, Swedish, Turkish, Traditional Chinese, Ukrainian  
**Other convenience:** Kensington lock, VESA mount (100 x 100 mm), VESA bracket  
**MultiView:** PIP/PBP mode, 2 x devices  
**KVM**  
**Low blue light:** Low blue light compliance\*

### Stand

**Height adjustment:** 150 mm  
**Swivel:** -/+ 20 degree  
**Tilt:** -5/20 degree

### Power

**Power supply:** Internal, 100–240 VAC, 50–60 Hz  
**Off mode:** 0.3 W (typ.)  
**On mode:** 113.6 W (typ.)  
**Standby mode:** 0.5 W (typ.)  
**Power LED indicator:** Operation - White, Standby mode - White (flashing)  
**Energy Label Class:** G

### Dimensions

**Packaging in mm (W x H x D):** 930 x 525 x 282 mm  
**Product without stand (mm):** 813 x 367 x 135 mm  
**Product with stand (max height):** 813 x 553 x 295 mm

### Weight

**Product with packaging (kg):** 12.49 kg  
**Product with stand (kg):** 8.70 kg  
**Product without stand (kg):** 6.80 kg

### Operating conditions

**Altitude:** Operation: +12,000 ft (3658 m), Non-operation: +40,000 ft (12,192 m)  
**Temperature range (operation):** 0°C to 40 °C  
**MTBF:** 30,000 hour(s)  
**Relative humidity:** 20%-80 %  
**Temperature range (storage):** -20°C to 60 °C

### Sustainability

**Environmental and energy:** RoHS  
**Recyclable packaging material:** 100 %  
**Specific Substances:** Mercury free, PVC/BFR free housing

### Compliance and standards

**Regulatory Approvals:** CB, CE Mark, FCC Class B, ICES-003, CU-EAC, EAEU RoHS, TUV/ISO9241-307, TUV-BAUART, cETLus

### Cabinet

**Colour:** White  
**Finish:** Textured

### What's in the box?

**Cables:** HDMI cable, DisplayPort cable, USB upstream cable, USB-C to USB-C cable, Power cable, VESA bracket  
**Monitor with stand**  
**User Documentation**



\* Radius of the arc of the display curvature in mm  
\* Active pixels: 3440 (H) x 1440 (V). Number of total pixels: 3456 (H) x 1456 (V); extra 8 pixels on each side, space reserved for pixel orbiting.  
\* Response time value equal to SmartResponse. The measurement pattern is 1 horizontal line.  
\* For best output performance, please always ensure that your graphic card is capable of achieving the maximum resolution and refresh rate of this Philips display.  
\* DCI-P3 Coverage based on CIE1976  
\* NTSC Area based on CIE 1976  
\* sRGB Area based on CIE1931  
\* Adobe RGB Coverage based on CIE 1976  
\* For USB-C power and charging function, your Notebook/device must support USB-C standard Power Delivery specifications. Please check with your Notebook user manual or manufacturer for more details.  
\* For Video transmission via USB-C, your Notebook/device must support USB-C DP Alt mode  
\* The ratio of display emission light in the range from 415 - 455 nm to the display emission of 400 - 500 nm shall be less than 50%.  
\* The monitor may look different from feature images.