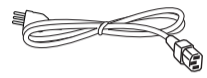
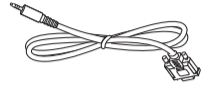


保証書  
クイックスタートガイド



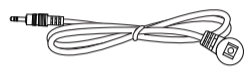
電源ケーブル



RS232 ケーブル



RS232 デジタルケーブル



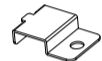
IR センサーケーブル



D-sub ケーブル



ダイポールアンテナ x2



SD カードカバー



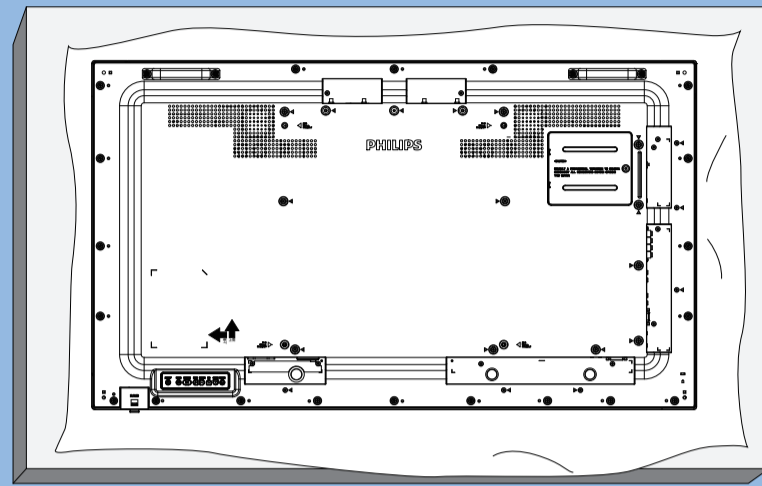
M3 ネジ x1



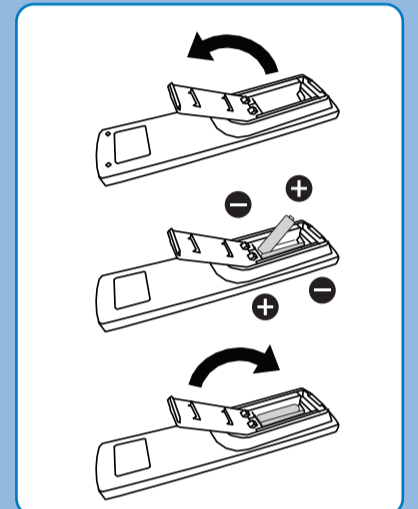
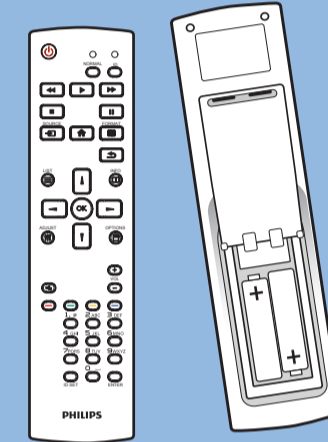
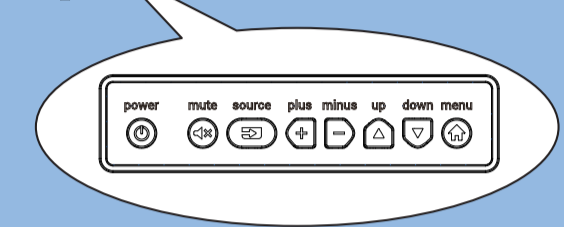
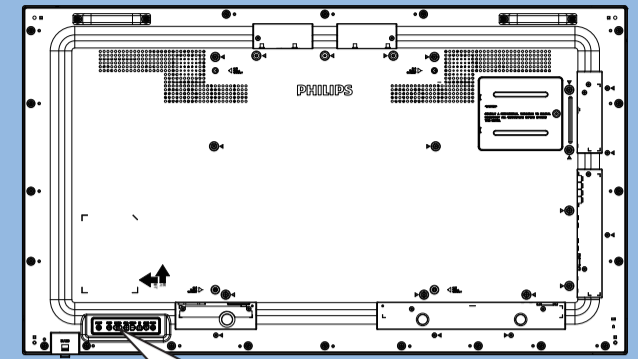
Philips ロゴ



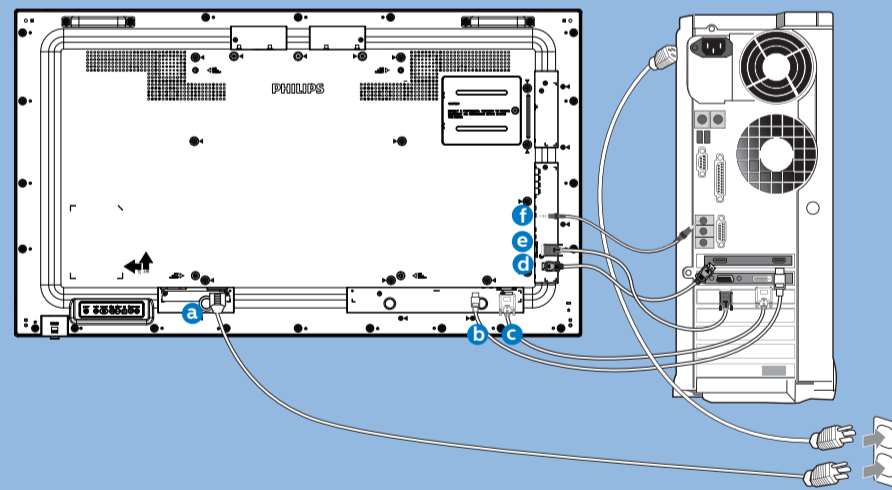
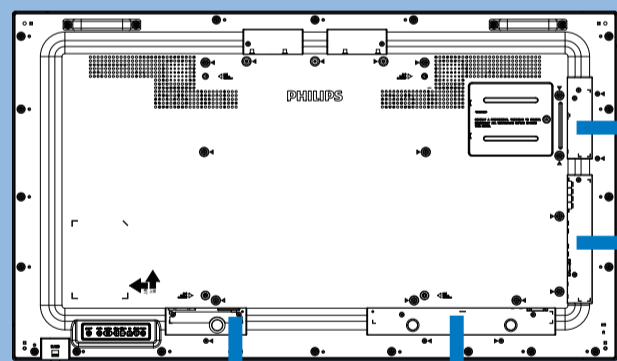
1



2



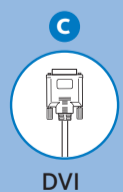
3



AC IN



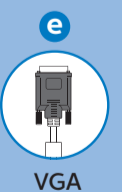
HDMI



DVI



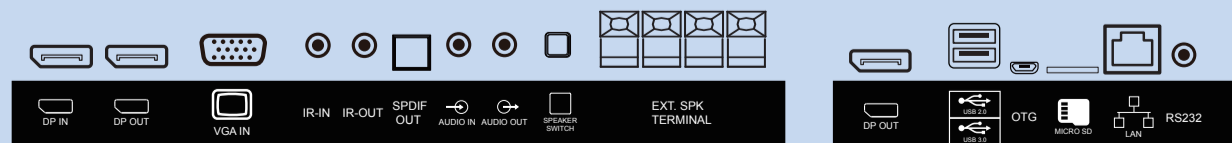
DP



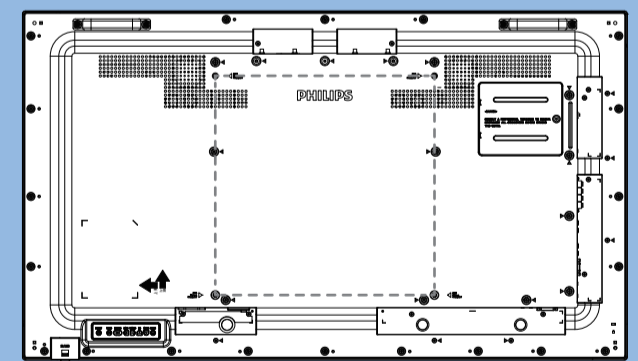
VGA



AUDIO



4

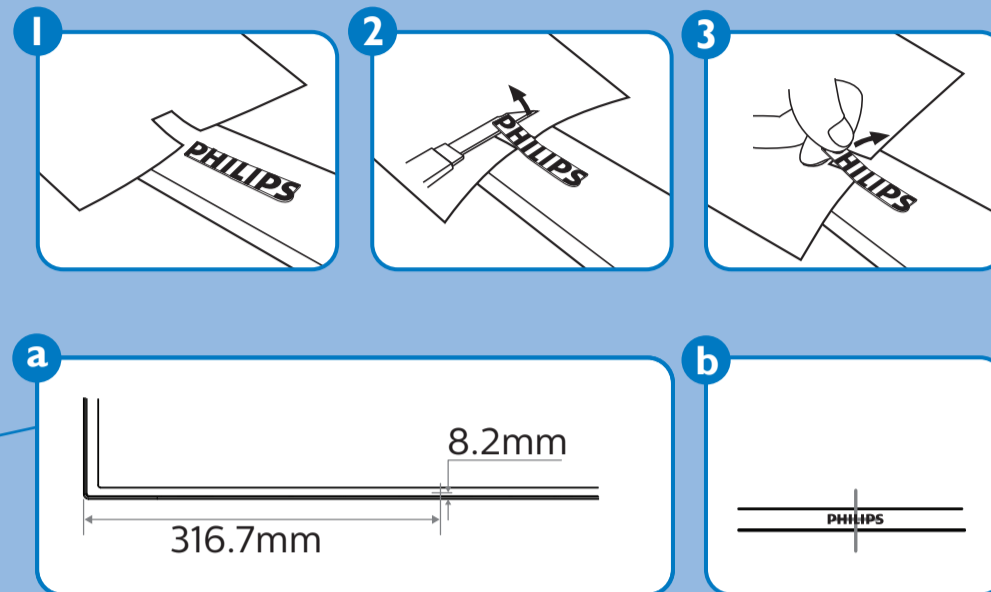
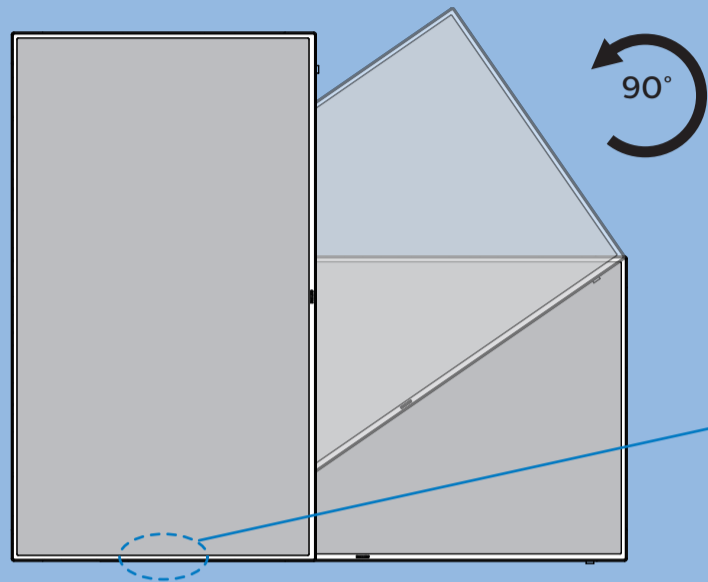


M6 \* (10+X) mm  
(X=Thickness of Wall mount BKT)

49BDL4150D: 400mmx400mm

49BDL4150D/11

5



# Quick Start

**PHILIPS**

