



Philips Brilliance
LCD monitor with
SoftBlue Technology

P Line

22 (21.5"/54.6 cm diag.)
1920 x 1080 (Full HD)

221P6EPYEB

Brilliant performance from every angle

with a full HD IPS display

Designed for you, the new Philips Brilliance monitor features new SoftBlue LED Technology for easy-on-the-eyes, brilliant, colourful images and maximum productivity.

Brilliant performance

- SmartImage pre-sets for easy optimised image settings
- IPS-ADS wide-view technology for image and colour accuracy

Designed for people

- SmartErgoBase enables user-friendly ergonomic adjustments
- Less eye fatigue with Flicker-Free technology
- SoftBlue Technology is easy on the eyes and maintains colour

Sustainable Eco-design

- PowerSensor saves up to 80% energy costs
- LightSensor for the perfect brightness with minimal power

Easy to experience

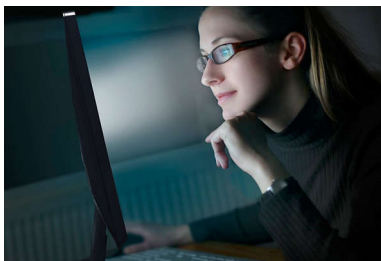
- Built-in stereo speakers for multimedia
- DisplayPort connection for maximum visuals
- USB 3.0 Hub for convenient access and fast charging

PHILIPS

LCD monitor with SoftBlue Technology
P Line 22 (21.5"/54.6 cm diag.), 1920 x 1080 (Full HD)

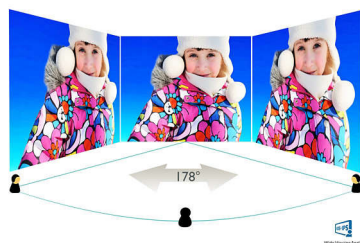
Highlights

SoftBlue Technology



SoftBlue LED technology uses smart technology to reduce harmful shortwave blue light without affecting the colour or image of the display. SoftBlue LED technology is certified by international testing organisation TUV Rheinland to reduce harmful blue light.

IPS-ADS technology



IPS-ADS displays use an advanced technology that gives you extra-wide viewing angles of 178/178 degrees, making it possible to view the display from almost any angle. Unlike standard TN panels, IPS-ADS displays give you remarkably crisp images with vivid colours, making them ideal not only for Photos, movies and web browsing, but also for professional applications that demand colour accuracy and consistent brightness at all times.

SmartImage



SmartImage is an exclusive leading edge Philips technology that analyses the content displayed

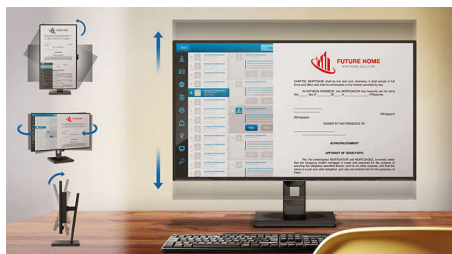
on your screen and optimises your display performance. This user-friendly interface allows you to select various modes, like Office, Photo, Movie, Game, Economy etc., to fit the application in use. Based on the selection, SmartImage dynamically optimises the contrast, colour saturation and sharpness of images and videos for ultimate display performance. The Economy mode option offers you major power savings. All in real time at the touch of a single button!

Flicker-Free technology



Due to the way brightness is controlled on LED-backlit screens, some users experience flicker on their screen which causes eye fatigue. Philips Flicker-Free technology applies a new solution to regulate brightness and reduce flicker for more comfortable viewing.

SmartErgoBase



The SmartErgoBase is a monitor base that delivers ergonomic display comfort and provides cable management. The user-friendly height, swivel, tilt and rotation angle adjustments of the base allow the monitor to be positioned for maximum comfort to help ease the physical strains of a long workday. In addition, cable management reduces cable clutter and keeps the workspace neat and professional.

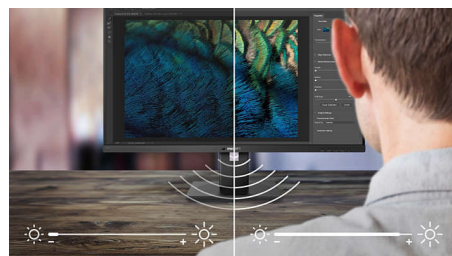
221P6EPYEB/00

Built-in stereo speakers



A pair of high-quality stereo speakers built into a display device. They may be visible front firing, or invisible down firing, top firing, rear firing etc. depending on model and design.

PowerSensor



PowerSensor is a built-in 'people sensor' that transmits and receives harmless infrared signals to determine if the user is present and then automatically reduces monitor brightness when then user steps away from the desk, cutting energy costs by up to 80 percent and prolonging monitor life

USB 3.0 Hub with FastCharge

Super Speed USB 3.0 deploys 5.0 gbit/s transfer rate, which is about 10 times faster than USB 2.0 standard, significantly reducing data transfer time to save you time and money. With more bandwidth, super speed transfer rates, better power management and superior overall performance, USB 3.0 sets the latest global standard and allows you to use large capacity storage devices. Now you don't have to wait so long for devices to charge. New FastCharge enables quick charging to charge and go. USB 3.0 is also backward compatible with USB 2.0 devices.



Specifications

Connectivity

- Signal Input: DisplayPort x 1, DVI-D (digital, HDCP), VGA (Analogue)
- USB: USB 3.0x4 (1 w/fast charging)*
- Sync Input: Separate Sync, Sync on Green
- Audio (In/Out): PC audio-in, Headphone out

Picture/Display

- Panel Size: 21.5 inch/54.6 cm
- Aspect ratio: 16:9
- LCD panel type: IPS-ADS LCD
- Backlight type: W-LED system
- Pixel pitch: 0.248 x 0.248 mm
- Optimum resolution: 1920 x 1080 @ 60 Hz
- Brightness: 250 cd/m²
- Display colours: 16.7 M
- Contrast ratio (typical): 1000:1
- SmartContrast: 20,000,000:1
- Response time (typical): 14 ms
- Viewing angle: 178° (H)/178° (V), @ C/R > 10
- Picture enhancement: SmartImage
- Effective viewing area: 476.6 (H) x 268.1 (V)
- Scanning Frequency: 30 - 83 kHz (H) / 56 - 76 Hz (V)
- sRGB
- SmartResponse (typical): 5 ms (Grey to Grey)
- SoftBlue

Convenience

- Built-in Speakers: 2 W x 2
- Plug and Play Compatibility: DDC/CI, Mac OS X, sRGB, Windows 10 / 8.1 / 8 / 7
- User convenience: SmartImage, Volume, PowerSensor, Menu, Power On/Off
- OSD Languages: Brazil Portuguese, Czech, Dutch, English, Finnish, French, German, Greek, Hungarian, Italian, Japanese, Korean, Polish, Portuguese, Russian, Simplified Chinese, Spanish, Swedish, Traditional Chinese, Turkish, Ukrainian
- Other convenience: Kensington lock, VESA mount (100 x 100 mm)

Stand

- Height adjustment: 130 mm
- Pivot: 90 degree
- Swivel: -175/+175 degree
- Tilt: -5/20 degree

Power

- ECO mode: 10.12 W (typ.)
- Power supply: 100–240 VAC, 50–60 Hz, Built-in

- Off mode: Zero watts with AC switch
- On mode: 13.84 W (typ.) (EnergyStar 6.0 test method)
- Standby mode: < 0.2 W (typ.)
- Power LED indicator: Operation - White, Standby mode - White (flashing)

Dimensions

- Product with stand (mm): 511 x 488 x 257 mm
- Packaging in mm (W x H x D): 565 x 493 x 184 mm
- Product without stand (mm): 511 x 319 x 52 mm

Weight

- Product with packaging (kg): 7.94 kg
- Product with stand (kg): 5.60 kg
- Product without stand (kg): 3.10 kg

Operating conditions

- Altitude: Operation: +12,000 ft (3658 m), Non-operation: +40,000 ft (12,192 m)
- Temperature range (operation): 0°C to 40°C °C
- Relative humidity: 20%-80 %
- Temperature range (storage): -20°C to 60°C °C
- MTBF (demonstrated): 70,000 hrs (excluded backlight)

Sustainability

- Environmental and energy: PowerSensor, LightSensor, EnergyStar 6.0, TCO Certified Edge, RoHS
- Post-consumer recycled plastic: 65%
- Recyclable packaging material: 100 %
- Specific Substances: PVC/BFR free housing, Mercury free

Compliance and standards

- Regulatory Approvals: CE Mark, FCC Class B, SEMKO, cETLus, CU-EAC, TUV Ergo, TUV/GS, EPA, PSB, WEEE, C-Tick, UKRAINIAN, CECP, ICES-003, TUV Cert. — blue light cut-off

Cabinet

- Finish: Texture
- Foot: Black
- Front bezel: Black
- Rear cover: Black

What's in the box?

- Cables: VGA, DVI, Display port, Audio, Power
- Monitor with stand
- User Documentation



Issue date 2024-04-24

Version: 9.0.1

EAN: 87 12581 73448 0

© 2024 Koninklijke Philips N.V.
All Rights reserved.

Specifications are subject to change without notice.
Trademarks are the property of Koninklijke Philips N.V.
or their respective owners.

www.philips.com

* Smart response time is the optimum value from either GtG or GtG (BW) tests.