

Philips Signage Solutions  
Q-Line Display

43"

Direct LED Backlight  
Full HD

BDL4330QL



## Stand out

Easy-setup 16/7 display.

Inform and enthrall with a Philips Q-Line professional Full HD display. This reliable solution can be up and running as quickly as you need-with no additional hardware.

### **Brilliant picture. Reliable performance**

- Full HD. Clear images. Crisp contrast

### **Effortless setup. Total control.**

- Operate, monitor and maintain with CMND & Control
- CMND & Create. Develop and launch your own content
- Remote system management through CMND

### **Cost-effective system solution**

- Energy-saving automatic backlight control
- Integrated media player. Easily schedule USB content
- Internal memory. Upload content for instant play
- Easy control. Remotely manage networked displays

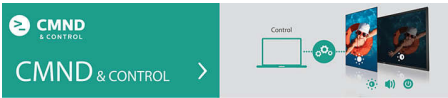
# PHILIPS

# Highlights

## CMND

Take control of your Philips Professional Display network. CMND lets you manage, update, maintain, and play via one easy-to-use interface. From installation to daily operation.

## CMND & Control



Run your display network over a local (LAN) connection. CMND & Control allows you to perform vital functions like controlling inputs and monitoring display status. Whether you're in charge of one screen or 100.

## CMND & Create



Take control of your content with CMND & Create. A drag-and-drop interface makes it simple to publish your own content-whether it's a daily specials board or branded corporate information. Preloaded templates and integrated widgets ensure your stills, text, and video will be up and running in no time.

## Integrated media player

Easily schedule content to play from USB. Your Philips Professional Display will wake from standby to play the content you want, and then return to standby once playback is done.

## Internal memory

Save and play content without the need for a permanent external player. Your Philips professional display has an internal memory, which allows you to upload media into the display for instant playback. The internal memory also functions as a cache for online streaming.

## Energy-saving

Energy-saving automatic backlight control

## Full HD. Clear images. Crisp

Full HD. Clear images. Crisp contrast

## Easy control

Easy control. Remotely manage networked displays

# Specifications

## Connectivity

- Audio output: Audio Left/Right (RCA), 3.5mm jack
- Video input: DVI-D, HDMI, Component (RCA), Composite (RCA), VGA (Analog D-Sub)
- Audio input: 3.5 mm jack, Audio Left/Right (RCA)
- Other connections: USB
- External control: RJ45, RS232C (in/out) 2.5 mm jack, IR (in/out) 3.5 mm jack

## Picture/Display

- Diagonal screen size (metric): 108 cm
- Diagonal screen size (inch): 42.5 inch
- Aspect ratio: 16:9
- Panel resolution: 1920x1080p
- Pixel pitch: 0.49 x 0.49 mm
- Optimum resolution: 1920 x 1080 @ 60 Hz
- Brightness: 350 cd/m<sup>2</sup>
- Display colors: 16.7 Million
- Contrast ratio (typical): 3000:1
- Dynamic contrast ratio: 500,000:1
- Response time (typical): 6.5 ms
- Viewing angle (horizontal): 178 degree
- Viewing angle (vertical): 178 degree
- DICOM: Clinical D-image

## Convenience

- Tiled Matrix: Up to 15 x 15
- Screen saving functions: Pixel Shift
- Keyboard control: Lockable, Hidden
- Signal loop through: RS232, IR Loopthrough
- Energy saving functions: Smart Power
- Network controllable: RS232, RJ45, One Wire (HDMI-CEC)
- Memory: Internal memory access, 8GB eMMC
- Start-up: Switch on delay, Switch on status, Wake up on LAN
- Start-up window: enable / disable Philips logo

## Sound

- Built-in speakers: 2 x 10W RMS

## Power

- Mains power: 100 ~ 240 VAC
- Consumption (On mode): 87 W (EnergyStar 6.0 test method)
- Standby power consumption: <0.5 W

## Supported Display Resolution

- Computer formats: 640 x 480, 60, 67, 72, 75Hz,

- 800 x 600, 56, 60, 72, 75Hz, 1024 x 768, 60Hz, 1280 x 768, 60Hz, 1280 x 800, 60Hz, 1360 x 768, 60Hz, 1366 x 768, 60Hz, 1440 x 900, 60Hz, 1920 x 1080, 60Hz
- Video formats: 480i, 60Hz, 480p, 60Hz, 576p, 50Hz, 576i, 50Hz, 720p, 50, 60Hz, 1080i, 50, 60Hz, 1080p, 50, 60Hz

## Dimensions

- Set Width: 968.2 mm
- Product weight: 8.70 kg
- Set Height: 559.4 mm
- Set Depth: 59.9 mm
- Set Width (inch): 38.12 inch
- Set Height (inch): 22.02 inch
- Wall Mount: 400 x 400mm, 200x200 mm, M6
- Set Depth (inch): 2.36 inch
- Bezel width: 11.9 (TLR) / 14.9 (B) mm
- Product weight (lb): 19.18 lb

## Operating conditions

- Temperature range (operation): 5 ~ 40 °C
- MTBF: 50,000 hour(s)
- Relative humidity: 20 ~ 80 %
- Temperature range (storage): -20 ~ 60 °C

## Multimedia Applications

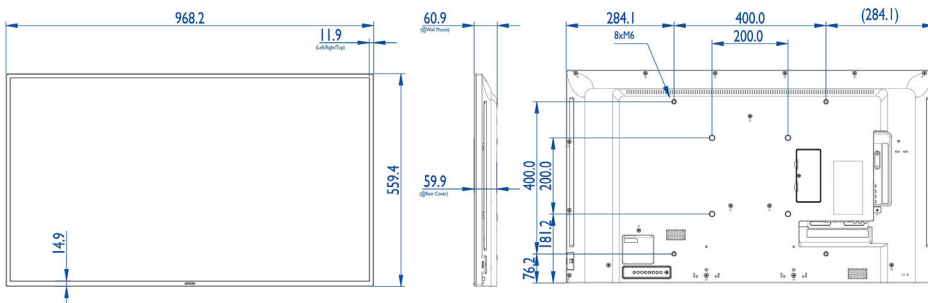
- USB Playback Video: 3G2, 3GP, ASF, ASX, AVI, DAT, F4V, FLV, M2TS, M4V, MK3D, MKV, MOV, MP4, MPE, MPEG, MPG, MTS, QT, TRP, TS, TTS, VOB, WEBM, WMV, Xvid
- USB Playback Picture: BMP, GIF, JPEG, JPG
- USB Playback Audio: AAC, AC3, AIF, AIFF, AMR, EC3, M4A, MP3, OGA, OGG, WAV, WMA

## Accessories

- Included accessories: AC Power Cord, RS232 cable, VGA cable, Remote Control, Batteries for remote control, User manual on CD-ROM, Quick start guide

## Miscellaneous

- On-Screen Display Languages: English, French, German, Italian, Polish, Russian, Spanish, Turkish, Simplified Chinese, Traditional Chinese
- Warranty: 3 year warranty
- Regulatory approvals: CE, CCC, UL/cUL, C-Tick, BSMI, CB, GOST, CECP, EPA



Issue date 2024-03-24

Version: 3.1.1

EAN: 87 12581 73030 7

© 2024 Koninklijke Philips N.V.  
All Rights reserved.

Specifications are subject to change without notice.  
Trademarks are the property of Koninklijke Philips N.V.  
or their respective owners.

[www.philips.com](http://www.philips.com)