

PHILIPS

EVNIA



4K HDR display with
Ambiglow

Gaming Monitor

Designed for Xbox

Evnia 7000

27" (68.5 cm)

3840 x 2160 (4K UHD)



279M1RV

Optimised performance for next-gen console gaming

For true console gaming enthusiasts, the Designed for Xbox display delivers a new era of gaming. Enjoy visual awesomeness and precise colour accuracy with UltraClear 4K Nano IPS Display. DisplayHDR 600 gives vibrant image quality.

Design to enhance the senses

- Ambiglow adds a new dimension to your viewing experience
- Enhanced audio with DTS Sound™
- 144 Hz refresh rates for ultra-smooth, brilliant images
- Low input lag reduces time delay between devices to monitor
- 120 Hz refresh rates for ultra-smooth, brilliant images

Designed for Xbox

- Designed for Xbox for the optimal gaming experience
- AMD FreeSync™ Premium Pro; smooth, low latency HDR gaming
- SmartImage HDR gives optimal viewing from your HDR content

Features for gamers needs

- LowBlue mode and Flicker-free easy-on-the eyes viewing
- IPS Nano colour technology extends gamut for vibrant visuals
- Certified NVIDIA® G-SYNC® compatible for smooth, fast gaming
- Access and display multiple sources on two devices

Highlights

Designed for Xbox



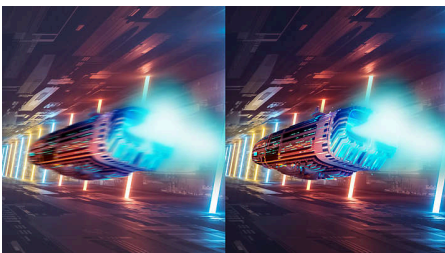
Unleash your console gaming. We partnered with the Xbox team to develop this Designed for Xbox display that is validated to deliver the optimal Xbox Series X visual performance the moment that you plug it in.

AMD FreeSync™ Premium Pro



Gaming shouldn't be a choice between choppy gameplay or screen tearing. This display is certified with AMD FreeSync™ Premium Pro, which provides a variable refresh rate (VRR) and true HDR gaming experience. This provides a combination of smooth gaming at peak performance, and exceptional high dynamic range visuals while still maintaining low latency.

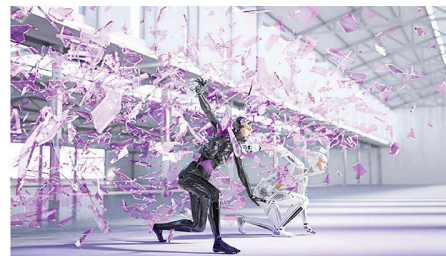
144 Hz Gaming



You play intense, competitive games. You demand a display with lag-free, ultra-smooth images. This Philips display redraws the screen

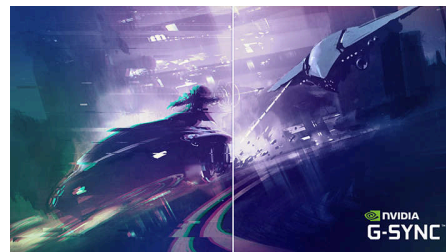
image up to 144 times per second, effectively 2.4x faster than a standard display. A lower frame rate can make enemies appear to jump from spot to spot on the screen, making them difficult targets to hit. With 144 Hz frame rate, you get those critical missing images on the screen, showing enemy movement in ultra-smooth motion so you can easily target them. With ultra-low input lag and no screen tearing, this Philips display is your perfect gaming partner

DTS Sound™



DTS Sound is an audio-processing solution designed to optimise the playback of music, movies, streaming and games on the PC regardless of form factors. DTS Sound enables an immersive virtual surround sound experience, complete with rich bass and dialogue enhancement and maximised volume levels free of any clipping or distortion.

NVIDIA® G-SYNC® Compatible



When playing intense games with high refresh rates, screen tearing may appear without optimal graphics synchronisation. Certified as NVIDIA® G-SYNC® compatible, variable refresh rate (VRR) reducing screen tearing and syncing your monitor's refresh rate with your graphic card's output for a smoother gaming experience.

Scenes appear instantly, objects look sharper and gameplay is smooth, giving you a stunning visual experience and a serious competitive edge.

IPS Nano Color



For critical imaging, gaming and productivity needs, Nano IPS display provides precise colour accuracy across a wide viewing angle without colour shift. Richer reds, lush greens and deeper blues. Ultra Wide-Color with IPS Nano Color technology uses KSF enhanced phosphor nanoparticles to absorb excess light created by the screen to produce amazing colour. True-to-life colour. Our display panels achieve up to 98% coverage of the DCI-P3 colour gamut standard for colour purity as defined by The Society of Motion Pictures and Television Engineers for cinematic picture quality.

MultiView and built-in KVM



Control and switch between two devices through a single keyboard and mouse with the built-in KVM. MultiView lets you survey both sources simultaneously on one screen. With these features, you can reduce cable clutter and save valuable time. Perfect for streamers with two PCs, content creators or when prepping devices for a LAN event.



Gaming Monitor

4K HDR display with Ambiglow

279M1RV/01

Highlights

Ambiglow



The innovative Ambiglow technology enhances the content on the screen by creating a halo of light from the monitor. Its fast processor analyses the incoming image content, continuously adapts the colour and brightness of the emitted light to match the image. Especially suited for watching movies, sports or playing games, Philips Ambiglow offers you a unique and immersive viewing experience.

SmartImage HDR



Select one of SmartImage HDR modes to best suit your needs. HDR Game: optimised for playing video games. With brighter white and

darker black, the gaming scene is vivid and reveals more details, easily spot enemies hiding in the dark corners and shadows. HDR Movie: ideal for watching HDR movie. Delivers better contrast and brightness for a more realistic and immersive viewing experience. HDR Photo: enhanced red, green and blue for lively visuals. DisplayHDR: VESA DisplayHDR certified*. Personal: customised settings in picture menu. *Please refer to specification for HDR grade.

LowBlue Mode and Flicker-free



Our LowBlue Mode and Flicker-free technology have been developed to reduce eye strain and fatigue often caused by long hours in front of a monitor.

120 Hz Gaming



You play intense, competitive games. You demand a display with lag-free, ultra-smooth images. This Philips display redraws the screen image up to 120 times per second, effectively faster than a standard display. A lower frame rate can make enemies appear to jump from spot to spot on the screen, making them difficult targets to hit. With 120 Hz frame rate, you get those critical missing images on the screen, showing enemy movement in ultra-smooth motion so you can easily target them. With ultra-low input lag and no screen tearing, this Philips display is your perfect gaming partner.



Specifications

Picture/Display

Panel Size: 27 inch / 68.5 cm
Aspect ratio: 16:9
LCD panel type: Nano IPS
Backlight type: W-LED system
Pixel pitch: 0.1554 x 0.1554 mm
Brightness: 450 cd/m²
Display colours: Colour support 1.07 billion colours
Colour gamut (typical): NTSC 112%*, sRGB 133%*, Adobe RGB: 110.1%*
Colour gamut (min.): DCI-P3: 98%*
Contrast ratio (typical): 1000:1
SmartContrast: Mega Infinity DCR
Response time (typical): 1 ms (Grey to Grey)*
Viewing angle: 178° (H)/178° (V), @ C/R > 10
Picture enhancement: SmartImage game
Maximum resolution: HDMI/DP: 3840 x 2160 @ 144 Hz*; USB-C: 3840 x 2160 @ 120 Hz
Effective viewing area: 603.9 (H) x 347.45 (V) mm
Scanning Frequency: HDMI: 30–135 kHz (H) / 48–144 Hz (V); DP: 30–254 kHz (H) / 48–144 Hz (V); USB-C: 30–254 kHz (H) / 48–120 Hz (V)
sRGB
Delta E: < 2 (sRGB)
Flicker-free
Pixel Density: 163 PPI
LowBlue Mode
SmartUniformity: 97 ~ 102%
Low Input Lag
AMD FreeSync™ technology: Premium Pro
G-SYNC: Compatible 60 Hz ~ 144 Hz (DP)*
HDR: DisplayHDR 600 certified
Ambiglow: 4 sided
HDMI 2.1 Feature: VRR, FRL

Connectivity

Signal Input: HDMI 2.1 x 3, DP 1.4 x 1, USB-C x 1 (DP Alt mode, PD 65 W)
Sync Input: Separate Sync
Audio (In/Out): Headphone out
USB: USB-B x 1 (upstream), USB 3.2 x 4 (downstream with 2 fast charge B.C 1.2)

Convenience

Built-in Speakers: 5 W x 2, DTS Sound
Plug and Play Compatibility: DDC/CI, Mac OS X, sRGB, Windows 10 / 8.1 / 8 / 7
User convenience: Power On/Off, Menu/OK, Input/Up, Game Settings/Down, SmartImage

game/Back

OSD Languages: Brazil Portuguese, Czech, Dutch, English, Finnish, French, German, Greek, Hungarian, Italian, Japanese, Korean, Polish, Portuguese, Russian, Spanish, Simplified Chinese, Swedish, Turkish, Traditional Chinese, Ukrainian
Other convenience: Kensington lock, VESA mount (100 x 100 mm)
MultiView: PBP (2 x devices)
KVM: USB-C, USB-B

Stand

Height adjustment: 130 mm
Swivel: -/+ 35 degree
Tilt: -5/20 degree

Power

Power supply: External, 100–240 VAC, 50–60 Hz
Off mode: 0.3 W (typ.)
On mode: 62.7 W (typ.)
Standby mode: 0.5 W (typ.)
Power LED indicator: Operation - White, Standby mode - White (flashing)

Dimensions

Packaging in mm (W x H x D): 730 x 470 x 224 mm
Product without stand (mm): 609 x 353 x 75 mm
Product with stand (max height): 609 x 545 x 282 mm

Weight

Product with packaging (kg): 12.32 kg
Product with stand (kg): 9.00 kg
Product without stand (kg): 5.20 kg

Operating conditions

Altitude: Operation: +12,000 ft (3658 m), Non-operation: +40,000 ft (12,192 m)
Temperature range (operation): 0°C to 35 °C
MTBF: 50 000 (Excluded backlight) hour(s)
Relative humidity: 20%-80 %
Temperature range (storage): -20°C to 60 °C

Sustainability

Environmental and energy: RoHS
Recyclable packaging material: 100 %
Specific Substances: Mercury free, PVC/BFR free housing

Compliance and standards

Regulatory Approvals: CB, CE Mark, CU-EAC, EAEU RoHS, TUV/ISO9241-307, TUV-BAUART

Cabinet

Colour: Black
Finish: Textured/Glossy

What's in the box?

Cables: DP cable, HDMI cable, USB-C to C cable, Power cable
Monitor with stand
User Documentation



* "IPS" word mark / trademark and related patents on technologies belong to their respective owners.
 * The maximum resolution works for either HDMI input or DP input.
 * For best output performance, please always ensure that your graphic card is capable of achieving the maximum resolution and refresh rate of this Philips display.
 * Response time value equal to SmartResponse
 * BT. 709 / DCI-P3 Coverage based on CIE1976
 * NTSC Area based on CIE 1976
 * sRGB Area based on CIE1931
 * Adobe RGB Coverage based on CIE 1976
 * NVIDIA® G-SYNC® support interface: DisplayPort
 * Make sure to update NVIDIA® G-SYNC® driver to the latest version, see more information on NVIDIA website: <https://www.nvidia.com/>
 * Make sure that your graphic card supports NVIDIA® G-SYNC®
 * 2020 Advanced Micro Devices, Inc. All rights reserved. AMD, the AMD Arrow logo, AMD FreeSync™ and combinations thereof are trademarks of Advanced Micro Devices, Inc. Other product names used in this publication are for identification purposes only and may be trademarks of their respective companies.
 * The monitor may look different from feature images.