

Philips 3000 series
Wireless keyboard-mouse
combo

2.4 GHz Wireless
Multimedia shortcuts
Low-profile design
Intelligent power saving

SPT6307B



Wireless convenience, compact design

Work without worrying about cable management — this keyboard is equipped with a 2.4G wireless connection. Not to mention, the keyboard has a low-profile design and the mouse can operate at up to 1600 DPI for the most efficient combo yet.

Advanced technology for ultimate performance

- Up to 1,600 DPI

Wireless convenience

- 2.4 G wireless connection for a completely cordless workspace
- Intelligent power saving

Philips reliability

- Keys last millions of keystrokes for durability

Designed for performance

- Convenient multi-media shortcuts
- Low-profile keys are quick and stylish looking

PHILIPS

Highlights

Keystrokes for durability



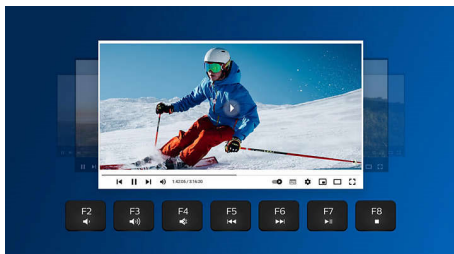
Keys last millions of keystrokes for durability

2.4 G wireless connection



Keep the computer wires at bay. For any keyboard/mouse equipped with this feature, you can connect the accessory to any PC via a speedy 2.4 Hz wireless connection. The simple setup process, along with the accessory's sleek design, is sure to leave your workspace looking clean and wire-free.

Multi-media shortcuts



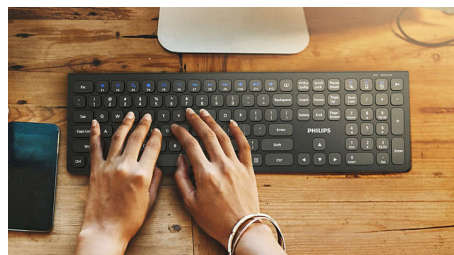
With these multi-media shortcuts, you can easily switch to music, volume or video play by a simple click.

Intelligent power saving



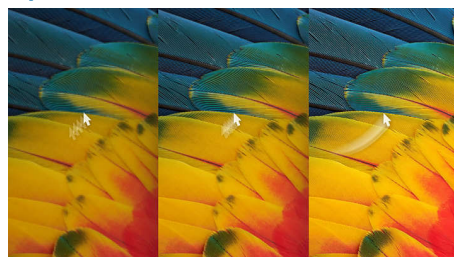
With the intelligent power-saving function, this combo can go into standby and therefore save power when not in use.

Low-profile keys



The low-profile keys add a stylish look and are quick and responsive for typing.

Up to 1,600 DPI



This mouse delivers precision tracking up to 1,600 DPI with higher smoothing and accuracy.

Specifications

OS/System Requirements

- System Requirements: Microsoft Windows 7, Windows 8, Windows 10 or later; Linux V1.24 and above; Mac OS 10.5 and above

Physical Dimensions

- Dimensions (L x W x H): Keyboard: 433 x 136 x 22 mm Mouse: 110 x 65 x 35 mm
- Weight: Keyboard: 566 g Mouse: 83 g

Technical specifications

- Connectivity: 2.4 GHz wireless
- Product Type: Wireless keyboard-mouse combo
- Keys: 110 keys
- Handed Type: Left- and right-handed mouse
- Front Panel Material - Keyboard: Plastics front panel
- Optical Sensor Precision-Mouse: 1600 DPI
- What's in the box: Wireless keyboard and mouse, Wireless receiver, User manual and important information, 1*AA and 1*AAA batteries



Issue date 2024-04-01

Version: 5.0.1

EAN: 87 12581 80212 7

© 2024 Koninklijke Philips N.V.
All Rights reserved.

Specifications are subject to change without notice.
Trademarks are the property of Koninklijke Philips N.V.
or their respective owners.

www.philips.com