



Philips  
LCD monitor with  
PowerSensor

### B Line

32 (31.5" / 80 cm diag.)  
3840 x 2160 (4K UHD)

328B1

## Ultra-clear vision to get more done

Get your best work done with this Philips monitor. UltraClear 4K UHD gives the space and clarity for your work. Loaded with features to improve productivity and sustainability.

#### Designed for sustainability

- PowerSensor saves up to 80% energy costs
- LightSensor for the perfect brightness with minimal power

#### Excellent performance

- UltraClear 4K UHD (3840x2160) resolution for precision
- VA display delivers awesome images with wide viewing angles
- SmartImage presets for easy optimized image settings

#### Designed for the way you work

- Less eye fatigue with Flicker-free technology
- LowBlue Mode for easy on-the-eyes productivity
- EasyRead mode for a paper-like reading experience
- SmartErgoBase enables people-friendly ergonomic adjustments
- Built-in stereo speakers for multimedia

# PHILIPS

# Highlights

## PowerSensor



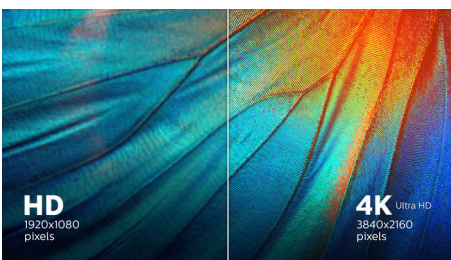
PowerSensor is a built-in 'people sensor' that transmits and receives harmless infrared signals to determine if user is present and automatically reduces monitor brightness when user steps away from the desk, cutting energy costs by up to 80 percent and prolonging monitor life

## LightSensor



LightSensor uses a smart sensor to adjust the picture brightness depending on the room light conditions for the perfect picture with minimal power usage.

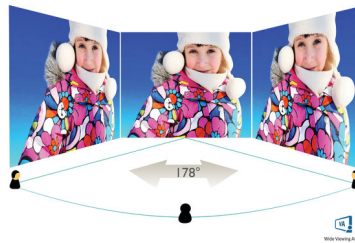
## UltraClear 4K UHD Resolution



These Philips displays utilize high performance panels to deliver UltraClear, 4K UHD (3840 x 2160) resolution images. Whether you are demanding professional requiring extremely detailed images for CAD solutions, using 3D

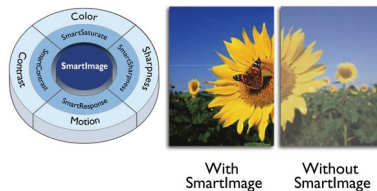
graphics applications or a financial wizard working on huge spreadsheets, Philips displays will make your images and graphics come alive.

## VA display



Philips VA LED display uses an advanced multi-domain vertical alignment technology which gives you super-high static contrast ratios for extra vivid and bright images. While standard office applications are handled with ease, it is especially suitable for photos, web-browsing, movies, gaming, and demanding graphical applications. It's optimized pixel management technology gives you 178/178 degree extra wide viewing angle, resulting in crisp images.

## SmartImage



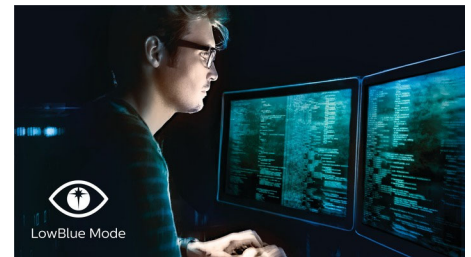
SmartImage is an exclusive leading edge Philips technology that analyzes the content displayed on your screen and gives you optimized display performance. This user friendly interface allows you to select various modes like Office, Photo, Movie, Game, Economy etc., to fit the application in use. Based on the selection, SmartImage dynamically optimizes the contrast, color saturation and sharpness of images and videos for ultimate display performance. The Economy mode option offers you major power savings. All in real time with the press of a single button!

## Flicker-free technology



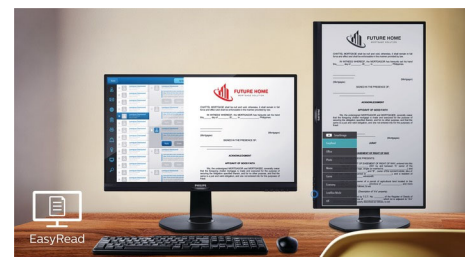
Due to the way brightness is controlled on LED-backlit screens, some users experience flicker on their screen which causes eye fatigue. Philips Flicker-free Technology applies a new solution to regulate brightness and reduce flicker for more comfortable viewing.

## LowBlue Mode



Studies have shown that just as ultra-violet rays can cause eye damage, shortwave length blue light rays from LED displays can cause eye damage and affect vision over time. Developed for wellbeing, Philips LowBlue Mode setting uses a smart software technology to reduce harmful shortwave blue light.

## EasyRead mode



EasyRead mode for a paper-like reading experience



# Specifications

## Picture/Display

- LCD panel type: VA LCD
- Backlight type: W-LED system
- Panel Size: 31.5 inch / 80 cm
- Display Screen Coating: Anti-Glare, 3H, Haze 25%
- Effective viewing area: 697.306 (H) x 392.234 (V)
- Aspect ratio: 16:9
- Optimum resolution: 3840 x 2160 @ 60Hz
- Pixel Density: 140 PPI
- Response time (typical): 4 ms (Gray to Gray)\*
- Brightness: 350 cd/m<sup>2</sup>
- Contrast ratio (typical): 3000:1
- SmartContrast: 50,000,000:1
- Pixel pitch: 0.18159 x 0.18159 mm
- Viewing angle: 178° (H) / 178° (V), @ C/R > 10
- Flicker-free
- Picture enhancement: SmartImage
- Display colors: 16.7 M
- Color gamut (typical): NTSC 98%\*, sRGB 119%\*, Adobe RGB 97%\*
- Scanning Frequency: 30 - 140 kHz (H) / 40 - 60 Hz (V)
- SmartUniformity: 93 ~ 105%
- Delta E: < 2 (for sRGB)
- sRGB
- LowBlue Mode
- EasyRead
- Adaptive sync

## Connectivity

- Signal Input: DisplayPort 1.2, HDMI 2.0 x 2
- HDCP: HDCP 2.2 (DP / HDMI)
- USB: USB-B x 1 (upstream), USB3.2 x 4 (downstream with 1 fast charge B.C 1.2)
- Sync Input: Separate Sync
- Audio (In/Out): Audio out

## Convenience

- Built-in Speakers: 3 W x 2
- User convenience: SmartImage, Input, PowerSensor, Menu, Power On/Off
- Control software: SmartControl
- OSD Languages: Brazil Portuguese, Czech, Dutch, English, Finnish, French, German, Greek, Hungarian, Italian, Japanese, Korean, Polish, Portuguese, Russian, Simplified Chinese, Spanish, Swedish, Traditional Chinese, Turkish, Ukrainian
- Other convenience: Kensington lock, VESA mount (100x100mm)
- Plug & Play Compatibility: DDC/CI, Mac OS X, sRGB, Windows 10 / 8.1 / 8 / 7

## Stand

- Height adjustment: 180 mm
- Pivot: +/- 90 degree

- Swivel: +/- 180 degree
- Tilt: -5 ~ 30 degree

## Power

- ECO mode: 37.1 W (typ.)
- On mode: 60.3 W (typ.)
- Standby mode: 0.3 W
- Off mode: Zero watts with Zero switch
- Energy Label Class: G
- Power LED indicator: Operation - White, Standby mode- White (blinking)
- Power supply: Built-in, 100-240VAC, 50-60Hz

## Dimensions

- Product with stand(max height): 714 x 649 x 280 mm
- Product without stand (mm): 714 x 422 x 62 mm
- Packaging in mm (WxHxD): 930 x 563 x 186 mm

## Weight

- Product with stand (kg): 11.55 kg
- Product without stand (kg): 7.54 kg
- Product with packaging (kg): 14.76 kg

## Operating conditions

- Temperature range (operation): 0°C to 40°C °C
- Temperature range (storage): -20°C to 60°C °C
- Relative humidity: 20%-80 %
- Altitude: Operation: +12,000ft (3,658m), Non-operation: +40,000ft (12,192m)
- MTBF (demonstrated): 70,000 hrs (excluded backlight)

## Sustainability

- Environmental and energy: PowerSensor, LightSensor, RoHS
- Recyclable packaging material: 100 %
- Post consumer recycled plastic: 85%
- Specific Substances: PVC / BFR free housing, Mercury free

## Compliance and standards

- Regulatory Approvals: CB, TUV/GS, TUV Ergo, SEMKO, CU-EAC, EAEU RoHS, CCC, CECP, CEL, CE Mark, FCC Class B, ICES-003, UKRAINIAN

## Cabinet

- Front bezel: Black
- Rear cover: Black
- Foot: Black
- Finish: Texture

## What's in the box?

- Monitor with stand
- Cables: HDMI cable, DP cable, Power cable
- User Documentation



Issue date 2022-05-19

Version: 3.0.2

12 NC: 8670 001 67988  
EAN: 87 12581 76808 9

© 2022 Koninklijke Philips N.V.  
All Rights reserved.

Specifications are subject to change without notice.  
Trademarks are the property of Koninklijke Philips N.V.  
or their respective owners.

[www.philips.com](http://www.philips.com)

\* Response time value equal to SmartResponse

\* NTSC Area based on CIE1976

\* sRGB Area based on CIE1931

\* Adobe RGB Coverage based on CIE1976

\* The monitor may look different from feature images.