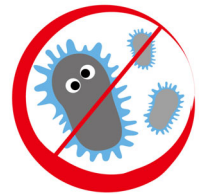




Philips
LCD monitor

Clinical review display
21.5"/54.6 cm

C221S3UCW



AntiMicrobial

Simplicity with USB display

ideal for use in clinical environments

This Philips USB monitor is ideal for usage in mobile clinical environments where AC power may not be conveniently accessible. Simply connect it with a single USB cable from your notebook to deliver video and power.

Clinical Review

- Antimicrobial housing actively inhibits bacterial growth
- Medical-grade power supply ensures safety with low emission
- Design complements clinical environment

Simplicity makes sense

- Single USB 2.0 laptop connection for power and video
- No power or video cables required
- True plug and play operation
- Instant on, thanks to LED technology

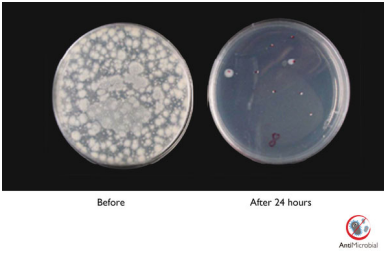
Ergonomic design

- 70 mm height adjustment for ideal sitting position
- Tilt and swivel adjustment for the ideal viewing angle

PHILIPS

Highlights

Antimicrobial housing



Germs have become a growing problem in hospitals and clinical environments worldwide as they can cause life-threatening infections. Philips clinical review displays take care of this challenge by using a JIS Z2801-compliant antimicrobial additive in its housing material making it an integral part of the display housing. Your wellbeing, along with your patients, is now assured by this protective shield that impedes the growth of the most common microorganisms, such as "Staphylococcus aureus (Gastroenteritis)", "Escherichia coli (E Coli)" and "Klebsiella (Pneumonia)", for example.

Medical-grade power supply

Basic safety, essential performance and reliability are essential requirements in a professional clinical environment. Unlike standard displays, Philips clinical review displays employ special medical-grade power supplies in order to meet these requirements. It complies with the EN/IEC 60601-1 standard ensuring basic safety and essential performance. It also complies with the EN/IEC 60601-1-2 collateral standard for medical-grade electromagnetic tests and compatibility. Many countries, hospitals and clinics mandate compliance to these standards as a requirement.

LED technology

White LED's are solid state devices which light up to full, consistent brightness faster saving startup time. LED's are free from mercury content, which allows for eco-friendly recycling and disposal process. LED's allow for better dimming control of the LCD backlight, resulting in a super high contrast ratio. It also

gives superior colour reproduction thanks to consistent brightness across the screen.

USB Power, Video

Philips USB monitor is capable of displaying images and drawing power directly from your laptop USB ports with a single USB cable. No extra power or video cables are required resulting in a simple, single cable, extra low power connection between your laptop and monitor.

70 mm height adjustment

The Compact Ergo Base is a 'people friendly' Philips monitor base that tilts, swivels and is height adjustable so each user can position the monitor for maximum viewing comfort and efficiency.

Screen tilt and swivel

Screen tilt and swivel mechanism built into the base permits the monitor to swivel and tilt backwards or forwards.



Specifications

Picture/Display

- LCD panel type: TFT-LCD (TN)
- Backlight type: W-LED system
- Panel Size: 21.5 inch/54.6 cm
- Effective viewing area: 476.6 (H) x 268.1 (V)
- Aspect ratio: 16:9
- Optimum resolution: 1920 x 1080 @ 60 Hz
- Response time (typical): 5 ms
- Brightness: 150 cd/m²
- Contrast ratio (typical): 1000:1
- Pixel pitch: 0.248 x 0.248 mm
- Viewing angle: 160° (H)/150° (V), @ C/R > 10
- Display colours: 16.7 M
- sRGB

Connectivity

- Video Signal Input: USB 2.0

Convenience

- Other convenience: Kensington lock, VESA mount (100 x 100 mm)
- Plug and Play Compatibility: Mac OS X, sRGB, Windows 8/7/Vista
- OSD Languages: English, French, German, Italian, Portuguese, Russian, Simplified Chinese, Spanish

Stand

- Height adjustment: up to 70 mm
- Swivel: -65/65 degree
- Tilt: -5/20 degree

Power

- On mode: 10.3 W (typ.)
- Standby mode: 0.3 W (typ.)
- Off mode: 0 W
- Power LED indicator: Operation - White
- Power supply: USB 2.0 ports
- External power supply: 100-240VAC, 50-60 Hz (Medical cert.: IEC60601-1/EN60601-1)

Dimensions

- Product with stand (max height): 507 x 402 x

- 201 mm
- Product without stand (mm): 507 x 323 x 59 mm
- Packaging in mm (W x H x D): 565 x 461 x 131 mm

Weight

- Product with stand (kg): 3.85 kg
- Product without stand (kg): 3.44 kg
- Product with packaging (kg): 5.13 kg

Operating conditions

- Temperature range (operation): 0°C to 40°C °C
- Temperature range (storage): -20°C to 60°C °C
- Relative humidity: 20–80% %
- Altitude: Operation: +12,000 ft (3658 m), Non-operation: +40,000 ft (12,192 m)
- MTBF: 30,000 hour(s)

Antimicrobial

- Anti-microbial housing
- JISZ2801 Anti-microbial housing

Sustainability

- Environmental and energy: EPEAT Silver, RoHS
- Recyclable packaging material: 100 %
- Specific Substances: PVC/BFR free housing, Lead free, Mercury free

Compliance and standards

- EMC: CE Mark, IEC/EN60601-1-2
- Safety: CE Mark, IEC/EN60601-1
- Ergonomic/Others: JIS Z2801, WEEE

Cabinet

- Front bezel: White
- Rear cover: White
- Foot: White
- Finish: Texture

What's in the box?

- Monitor with stand
- Cables: USB, Power
- User Documentation



Issue date 2022-05-15

Version: 3.0.1

12 NC: 8670 001 02518
EAN: 87 12581 68597 3

© 2022 Koninklijke Philips N.V.
All Rights reserved.

Specifications are subject to change without notice.
Trademarks are the property of Koninklijke Philips N.V.
or their respective owners.

www.philips.com

* Please note: This display is not certified to be used in patient vicinity.
Any use for primary diagnostics is the sole responsibility of the
hospital or clinic operator only.