

PHILIPS

Gaming monitor

E Line

27" (68.6 cm)

1920 x 1080 (Full HD)

272E1GAEZ



Gear up

for a clear advantage

The Philips E line gaming monitor is a great all-around display that delivers serious tear-free gameplay. AMD FreeSync™, 144 Hz fast refresh rate and 1 ms deliver a smooth entertainment experience whether you're playing games or watching movies.

Features designed for you

- Built-in stereo speakers for multimedia
- Less eye fatigue with Flicker-Free technology
- LowBlue Mode for easy-on-the-eyes productivity
- Tilt and height-adjust for an ideal viewing position

The gaming advantage is yours

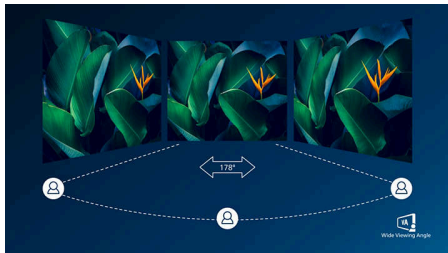
- 1 ms (MPRT) fast response for crisp images and smooth gameplay
- AMD FreeSync™ Premium; tear free, stutter free, fluid gaming
- SmartImage game mode optimised for gamers
- 144 Hz refresh rates for ultra-smooth, brilliant images
- Ultra Wide-Color wider range of colours for a vivid picture

Immersive visuals

- 16:9 Full HD display for crisp, detailed images
- SmartContrast for rich black details
- VA display delivers awesome images with wide viewing angles

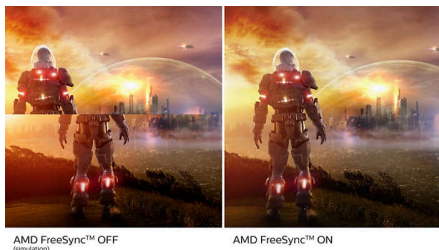
Highlights

VA display



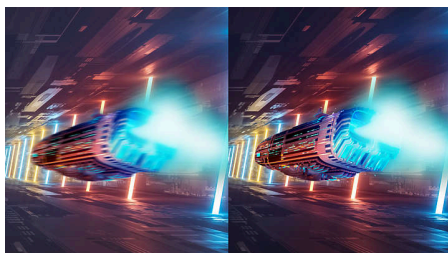
The Philips VA LED display uses an advanced multi-domain vertical alignment technology that gives you super-high static contrast ratios for extra-vivid and bright images. While standard office applications are handled with ease, it is especially suitable for photos, web browsing, films, gaming and demanding graphical applications. Its optimised pixel management technology gives you a 178/178 degree extra-wide viewing angle, resulting in crisp images.

AMD FreeSync™ Premium



Gaming shouldn't be a choice between choppy gameplay or broken frames. AMD FreeSync™ Premium equips serious gamers with a fluid, tear-free gameplay experience at peak performance. There are no compromises, game confidently with a high refresh rate, low framerate compensation and low latency.

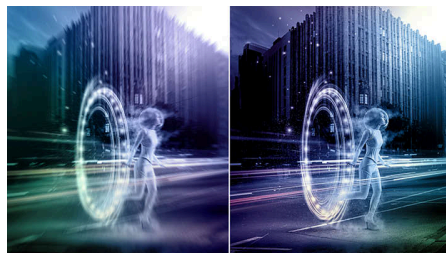
144 Hz Gaming



You play intense, competitive games. You demand a display with lag-free, ultra-smooth images. This Philips display redraws the screen image up to 144 times per second, effectively 2.4x faster than a standard display. A lower frame

rate can make enemies appear to jump from spot to spot on the screen, making them difficult targets to hit. With 144 Hz frame rate, you get those critical missing images on the screen, showing enemy movement in ultra-smooth motion so you can easily target them. With ultra-low input lag and no screen tearing, this Philips display is your perfect gaming partner

1 ms MPRT fast response



MPRT (motion picture response time) is a more intuitive way to describe response time, which directly refers to the duration between seeing blurry noise and clean, crisp images. The Philips gaming monitor with 1 ms MPRT effectively eliminates smearing and motion blur and delivers sharper and more precise visuals to enhance your gaming experience. The best choice for playing thrilling and twitch-sensitive games.

SmartImage Game mode



The new Philips gaming display has quick-access OSD fine-tuned for gamers, offering you multiple options. "FPS" mode (First person shooting) improves dark themes in games, allowing you to see hidden objects in dark areas. "Racing" mode adapts the display with the fastest response time and high colour, along with image adjustments. "RTS" mode (Real-time strategy) has a special SmartFrame mode that enables highlighting of specific area and allows for size and image adjustments. Gamer 1 and Gamer 2 enable you to save personal customised settings based on different games, ensuring best performance.

Ultra Wide-Color Technology



Ultra Wide-Color Technology delivers a wider spectrum of colours for a more brilliant picture. The Ultra Wide-Color wider "colour gamut" produces more natural-looking greens, vivid reds and deeper blues. Bring media entertainment, images and even productivity more alive with vivid colours from Ultra Wide-Color Technology.

Flicker-Free technology



Due to the way brightness is controlled on LED-backlit screens, some users experience flicker on their screen which causes eye fatigue. Philips Flicker-Free technology applies a new solution to regulate brightness and reduce flicker for more comfortable viewing.

LowBlue Mode



Studies have shown that just as ultra-violet rays can cause eye damage, shortwave-length blue light rays from LED displays can cause eye damage and affect vision over time. Developed for wellbeing, the Philips LowBlue Mode setting uses a smart software technology to reduce harmful shortwave blue light.



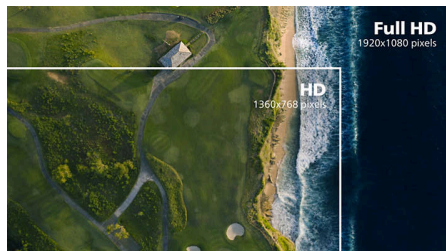
Highlights

Built-in stereo speakers



A pair of high-quality stereo speakers built into a display device. They may be visible front firing, or invisible down firing, top firing, rear firing etc. depending on model and design.

16:9 Full HD display



Picture quality matters. Regular displays deliver quality, but you expect more. This display features enhanced Full HD 1920 x 1080 resolution. With Full HD for crisp detail paired with high brightness, incredible contrast and realistic colours, expect a true-to-life picture.

SmartContrast



SmartContrast is a Philips technology that analyses the contents you are displaying, automatically adjusting colours and controlling backlight intensity to dynamically enhance contrast for the best digital images and videos or when playing games where dark hues are displayed. When Economy mode is selected, contrast is adjusted and backlighting fine-tuned for just-right display of everyday office applications and lower power consumption.



Ultra Wide Color

Specifications

Picture/Display

Panel Size: 27 inch/68.6 cm
Aspect ratio: 16:9
LCD panel type: VA LCD
Backlight type: W-LED system
Pixel pitch: 0.3114 x 0.3114 mm
Brightness: 350 cd/m²
Display colours: 16.7 M
Colour gamut (typical): NTSC 101.5%*, sRGB 121.9%*
Contrast ratio (typical): 3000:1
SmartContrast: Mega Infinity DCR
Response time (typical): 4 ms (Grey to Grey)*
Viewing angle: 178° (H)/178° (V), @ C/R > 10
Picture enhancement: SmartImage game
Maximum resolution: 1920 x 1080 @ 144 Hz*
Effective viewing area: 597.89 (H) x 336.31 (V) mm
Scanning Frequency: HDMI: 30 - 160 kHz (H)/48 - 144 Hz (V), DP: 30 - 200 kHz (H)/48 - 144 Hz (V)
sRGB
Flicker-free
Pixel Density: 82 PPI
LowBlue Mode
Display Screen Coating: Anti-Glare, 3H, Haze 25%
MPRT: 1 ms
EasyRead
AMD FreeSync™ technology: Premium

Connectivity

Signal Input: DisplayPort x 1, HDMI (digital, HDCP)
Sync Input: Separate Sync
Audio (In/Out): Audio out

Convenience

Built-in Speakers: 3 W x 2
Plug and Play Compatibility: DDC/CI, Mac OS X, sRGB, Windows 10 / 8.1 / 8 / 7
User convenience: Power On/Off, Menu, Volume, Input, SmartImage Game
OSD Languages: Brazil Portuguese, Czech, Dutch, English, Finnish, French, German, Greek, Hungarian, Italian, Japanese, Korean, Polish, Portuguese, Russian, Simplified Chinese, Spanish, Swedish, Traditional Chinese, Turkish, Ukrainian
Other convenience: Kensington lock, VESA mount (100 x 100 mm)

Stand

Height adjustment: 100 mm
Tilt: -5/20 degree

Power

Power supply: External, 100–240 VAC, 50–60 Hz
Off mode: 0.3 W
On mode: 32.2 W (typ.)
Standby mode: 0.5 W
Power LED indicator: Operation - White, Standby mode - White (flashing)
Energy Label Class: F

Dimensions

Packaging in mm (W x H x D):
680 x 626 x 202 mm
Product without stand (mm): 613 x 368 x 41 mm
Product with stand (max height):
613 x 545 x 224 mm

Weight

Product with packaging (kg): 8.19 kg
Product with stand (kg): 5.52 kg
Product without stand (kg): 3.84 kg

Operating conditions

Altitude: Operation: +12,000 ft (3658 m), Non-operation: +40,000 ft (12,192 m)
Temperature range (operation): 0 to 40 °C
MTBF: 50,000 hrs (excluding backlight) hour(s)
Relative humidity: 20%-80 %
Temperature range (storage): -20 to 60 °C

Sustainability

Environmental and energy: RoHS
Recyclable packaging material: 100 %
Specific Substances: Mercury free, PVC/BFR free housing

Compliance and standards

Regulatory Approvals: CB, TUV/GS, TUV Ergo, CU-EAC, EAEU RoHS, CE Mark, UKRAINIAN

Cabinet

Colour: Black / Dark Chrome
Finish: Textured

What's in the box?

Cables: DP cable, HDMI cable, Power cable
Monitor with stand
User Documentation



* Response time value equal to SmartResponse
* The maximum resolution works for either HDMI input or DP input.
* For best output performance, please always ensure that your graphic card is capable of achieving the maximum resolution and refresh rate of this Philips display.
* NTSC Area based on CIE 1976
* sRGB Area based on CIE1931
* 2020 Advanced Micro Devices, Inc. All rights reserved. AMD, the AMD Arrow logo, AMD FreeSync™ and combinations thereof are trademarks of Advanced Micro Devices, Inc. Other product names used in this publication are for identification purposes only and may be trademarks of their respective companies.
* The monitor may look different from feature images.