



Philips Evnia Curved  
Gaming Monitor  
QD OLED gaming monitor

### Evnia 8000

34" (86.36 cm)  
3440 x 1440 (WQHD)



34M2C8600

## Gaming beyond innovation

Be prepared to get stunned by the precise color reproduction of Evnia QD OLED gaming monitor. The innovative Ambiglow redefines what gaming environment usually is. You won't miss a thing in your game with our curved display.

#### Features designed for gamers needs

- Ambiglow intensifies entertainment with halo of light
- LowBlue mode and Flicker-free easy-on-the eyes viewing
- Access and display multiple sources on two devices
- Enhanced audio with DTS Sound™

#### Built for fast action

- AMD FreeSync™ Premium Pro; smooth, low latency HDR gaming
- SmartImage game mode optimized for gamers
- VESA ClearMR 9000: for the highest-quality of imagery

#### Immersive visuals

- Ultra Wide-Color wider range of colors for a vivid picture
- Curved display design for more immersive experience
- CrystalClear images with UltraWide QHD 3440 x 1440 pixels
- DisplayHDR™ TrueBlack 400 delivers incredible shadow details
- True 10-bit display reproduces smoother gradients on visuals

EVNIA

PHILIPS

QD OLED gaming monitor  
Evia 8000 34" (86.36 cm), 3440 x 1440 (WQHD)

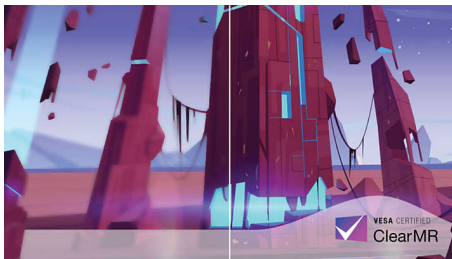
# Highlights

## QD OLED technology



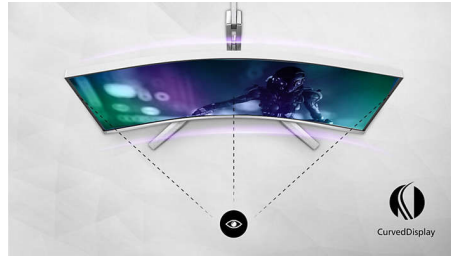
QD-OLED represents a hybrid approach that marries the OLED panels and quantum dot technology. By combining what's best of both, QD-OLED guarantees high contrast, deep blacks, and unlimited viewing angles, with the higher peak brightness and more vibrant colors.

## VESA ClearMR 9000



Previously, methods to test blurry imagery were measured through MRPT. VESA Certified ClearMR acts as an alternative to MRPT and blur is tested with a digital high-speed camera. For monitors that are sent in and certified through VESA Certified ClearMR, you can rest assured that you will have an accurate assessment of the monitor's blur quality. Each certification is defined through a CMR range, with the highest tier being VESA ClearMR 9000. With this monitor being certified as ClearMR 9000, it has the highest classification of image quality, meaning the least amount of overall blur.

## Curved display design



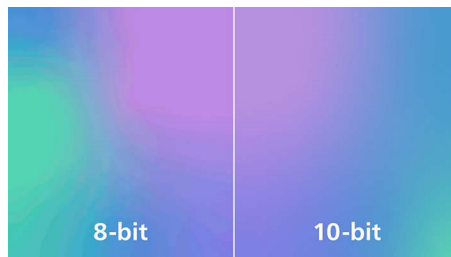
Desktop monitors offer a personal user experience, which suits a curve design very well. The curved screen provides a pleasant yet subtle immersion effect, which focuses on you at the center of your desk.

## DisplayHDR™ True Black 400



This Philips monitor is certified with VESA DisplayHDR™ True Black 400. Delivering stunningly accurate shadow detail with deeper blacks for a remarkable visual experience compared with conventional monitors of the same peak luminance. This Philips monitor comes with several HDR modes, each optimized for your usage scenarios: HDR Game, HDR Movie, HDR Photo, and VESA DisplayHDR certified level.

## True 10-bit color depth

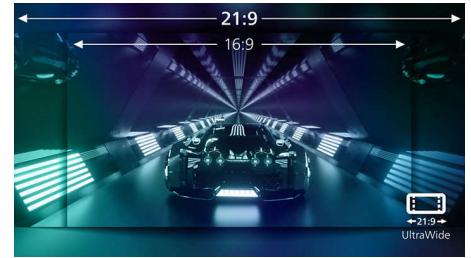


With this Philips true 10-bit color display, you can see color critical professional work of

34M2C8600/69

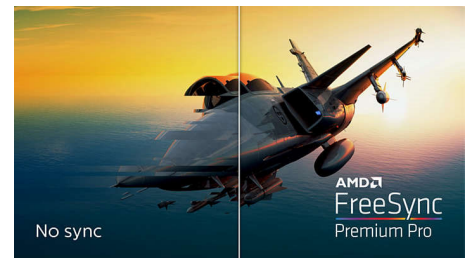
exceptional color accuracy and meeting professional standards. Compared with conventional 8-bit color display, this Philips monitor produces a more natural transition between hues for smoother gradients.

## UltraWide CrystalClear images



These Philips screens deliver CrystalClear, UltraWide Quad HD 3440 x 1440 pixel images. Utilizing high performance panels with high-density pixel count, 178/178 wide viewing angles, these new displays will make your images and graphics come alive. The UltraWide 21:9 format enables more productivity with more room for side-by-side comparisons and more viewable spreadsheet columns. Whether you are demanding professional requiring extremely detailed information for CAD-CAM solutions, or a financial wizard working on huge spreadsheets, Philips displays delivers CrystalClear images.

## AMD FreeSync™ Premium Pro



Gaming shouldn't be a choice between choppy gameplay or broken frames. AMD FreeSync™ Premium Pro provides the true HDR gaming experience: a combination of smooth gaming at peak performance, and exceptional high dynamic range visuals while still maintaining low latency.



# Specifications

## Connectivity

- Signal Input: HDMI 2.0 x 2, DisplayPort 1.4 x 1, USB-C x 1 (DP Alt mode, Video, Data and Power Delivery)
- Sync Input: Separate Sync
- Audio (In/Out): Audio out
- HDCP: HDCP 1.4 (HDMI / DisplayPort / USB-C), HDCP 2.2 (HDMI / DisplayPort / USB-C), HDCP 2.3 (HDMI / DisplayPort / USB-C)
- USB Hub: USB 3.2 Gen 1 / 5 Gbps, USB-B upstream x 1, USB-A downstream x 4 (with 1 for fast charge B.C 1.2)

## Picture/Display

- Panel Size: 34 inch / 86.36 cm
- Aspect ratio: 21:9
- Monitor Panel Type: QD OLED
- Pixel pitch: 0.2315 x 0.2315 mm
- Brightness: SDR: 250 (APL 100%) nit, HDR: 450 (APL 10%) nit, HDR E/P: 1000 (APL 3%) nit
- Display colors: Color support 1.07 billion colors (10 bit)
- Color gamut (typical): NTSC 121.3%\*, sRGB 148.8%\*, Adobe RGB 97.8%\*
- Color gamut (min.): DCI-P3: 99.3%\*
- Contrast ratio (typical): 1,000,000:1
- SmartContrast: Mega Infinity DCR
- Response time (typical): 0.03 ms (Gray to Gray)\*
- Viewing angle: 178° (H) / 178° (V), @ C/R &gt; 10000
- Picture enhancement: SmartImage game
- Maximum resolution: HDMI: 3440 x 1440 @ 100 Hz, DP/USB-C: 3440 x 1440 @ 175 Hz
- Effective viewing area: 800.1 (H) x 337.1 (V) - at a 1800R curvature\*
- Scanning Frequency: HDMI: 30 - 160 kHz (H) / 48 - 100 Hz (V), DP/USB-C: 30 - 255 kHz (H) / 48 - 175 Hz (V)
- sRGB
- Delta E: <math>\Delta E</math> (sRGB)
- Flicker-free
- Pixel Density: 109.68 PPI
- LowBlue Mode
- Display Screen Coating: Anti-reflection, 2H
- Low Input Lag
- EasyRead
- Adaptive sync
- HDR: DisplayHDR True Black 400 certified
- Ambiglow: 4-sided
- Pixel format: RGB Q-Stripe\*

## Power Delivery

- Max power delivery: USB-C up to 90 W (5V/3A, 7V/3A, 9V/3A, 10V/3A, 12V/3A, 15V/3A, 20V/4.5A)
- Version: USB PD version 3.0

## Convenience

- Built-in Speakers: 5 W x 2, DTS
- Plug & Play Compatibility: DDC/CI, Mac OS X, sRGB, Windows 11 / 10 / 8.1 / 8 / 7

- User convenience: Power On/Off, Menu/OK, Input/Up, Game Settings/Down, SmartImage game/Back
- OSD Languages: Brazil Portuguese, Czech, Dutch, English, Finnish, French, German, Greek, Hungarian, Italian, Japanese, Korean, Polish, Portuguese, Russian, Spanish, Simplified Chinese, Swedish, Turkish, Traditional Chinese, Ukrainian
- Other convenience: Kensington lock, VESA mount (100x100mm), VESA bracket
- MultiView: PIP/PBP mode, 2x devices
- KVM
- Low blue light: Low blue light compliance\*

## Stand

- Height adjustment: 150 mm
- Swivel: -/+ 20 degree
- Tilt: -5/20 degree

## Power

- Power supply: Internal, 100-240VAC, 50-60Hz
- Off mode: 0.3 W (typ.)
- On mode: 113.6 W (typ.)
- Standby mode: 0.5 W (typ.)
- Power LED indicator: Operation - White, Standby mode- White (blinking)

## Dimensions

- Packaging in mm (WxHxD): 930 x 525 x 282 mm
- Product without stand (mm): 813 x 367 x 135 mm
- Product with stand(max height): 813 x 553 x 295 mm

## Weight

- Product with packaging (kg): 12.49 kg
- Product with stand (kg): 8.70 kg
- Product without stand (kg): 6.80 kg

## Operating conditions

- Altitude: Operation: +12,000ft (3,658m), Non-operation: +40,000ft (12,192m)
- Temperature range (operation): 0°C to 40 °C
- MTBF: 30,000 hour(s)
- Relative humidity: 20%-80 %
- Temperature range (storage): -20°C to 60 °C

## Sustainability

- Environmental and energy: RoHS
- Recyclable packaging material: 100 %
- Specific Substances: Mercury free, PVC / BFR free housing

## Compliance and standards

- Regulatory Approvals: CB, CE Mark, FCC Class B, ICES-003, CU-EAC, EAEU RoHS, TUV/ISO9241-307, TUV-BAUART, cETLus, PSB

## Cabinet

- Color: White
- Finish: Textured

Issue date 2024-03-24

© 2024 Koninklijke Philips N.V.  
All Rights reserved.

Version: 2.1.1

Specifications are subject to change without notice.  
Trademarks are the property of Koninklijke Philips N.V.  
or their respective owners.

EAN: 87 12581 80114 4

[www.philips.com](http://www.philips.com)

\* Radius of the arc of the display curvature in mm

\* Active pixels: 3440 (H) x 1440 (V). Number of total pixels: 3456 (H) x 1456 (V); extra 8 pixels on each side, space reserved for pixel orbiting.

\* Response time value equal to SmartResponse. The measurement pattern is 1 horizontal line.

\* For best output performance, please always ensure that your graphic card is capable of achieving the maximum resolution and refresh rate of this Philips display.

\* DCI-P3 Coverage based on CIE1976

\* NTSC Area based on CIE1976

\* sRGB Area based on CIE1931

\* Adobe RGB Coverage based on CIE1976

\* For USB-C power and charging function, your Notebook/device must support USB-C standard Power Delivery specifications. Please check with your Notebook user manual or manufacturer for more details.

\* For Video transmission via USB-C, your Notebook/device must support USB-C DP Alt mode

\* The ratio of display emission light in the range from 415 - 455 nm to the display emission of 400 - 500 nm shall be less than 50%.

\* The monitor may look different from feature images.