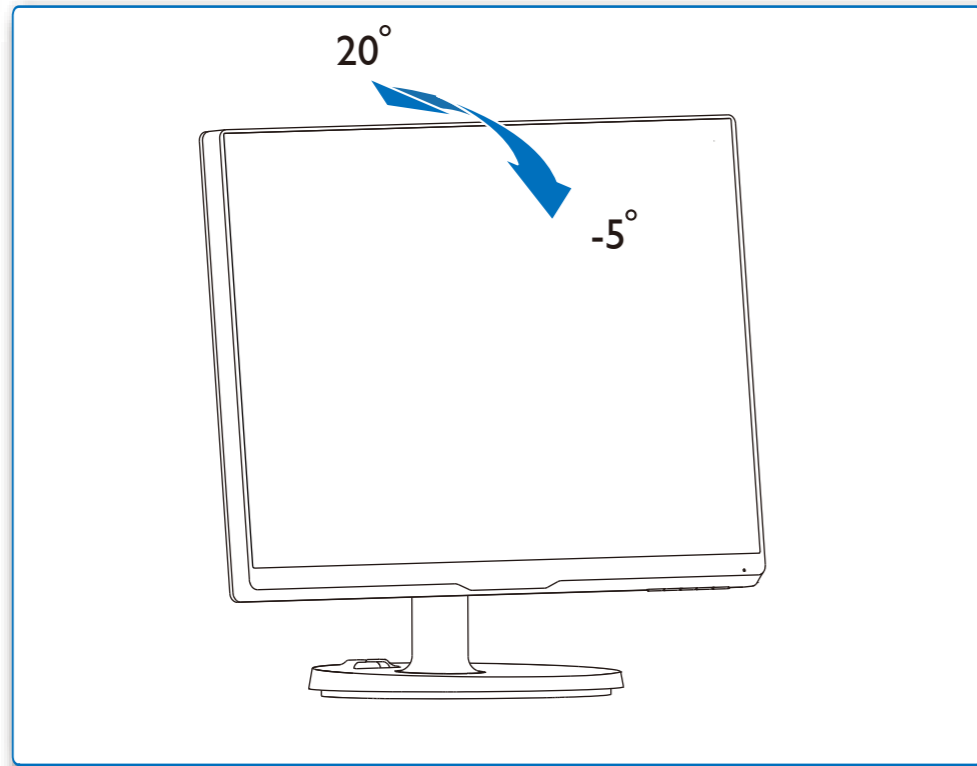


GRAPHIC DEVELOPMENT MMD	
Product name	H41G78S181357A
Project name	246V6 QSG
Project no.	M6246VQ1CHT
Finishing	Folded sheet
Scale	1:1
Size Spreads	594 (W) x 210 (H) mm
Size	148.5 (W) x 210 (H) mm
Operator(s)	
Date amended	2015-09-25
VERSION No.	1
APPROVAL	
QC Lithographer	
Product Manager	
Date Check	
ARTWORK DOCUMENT	
Paper	80gsm White, woodfree coated
Numbers of colours	2C+2C
Pantone 300c	
Spotcolor	
Black	
Aftertreatment	
<input type="checkbox"/> Cropping	
<input type="checkbox"/> Coating	
<input type="checkbox"/> Varnishing	
<input type="checkbox"/> Embossing	
<input type="checkbox"/> Cutterguide	
<input type="checkbox"/> Die-cut	
<input type="checkbox"/> Binding	
<input type="checkbox"/> Glue	

4



EN Need help?

Online help: www.philips.com/support

SC 需要帮助?

在线帮助: www.philips.com/support

Version: M6246VQ1CHT

© 2015 Koninklijke Philips N.V. All rights reserved. Specifications are subject to change without notice. Philips and the Philips Shield Emblem are registered trademarks of Koninklijke Philips N.V. and are used under license from Koninklijke Philips N.V.

www.philips.com



Printed in China



H41G78S181357A.....

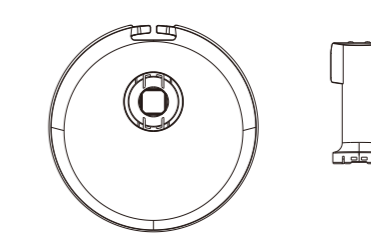
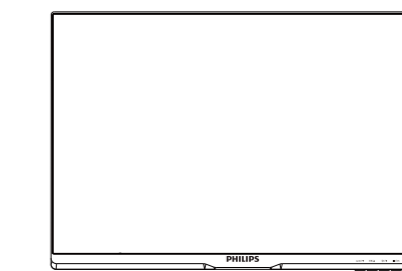
Register your product and get support at www.philips.com/welcome

246V6



Quick Start

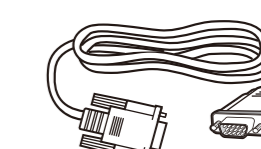
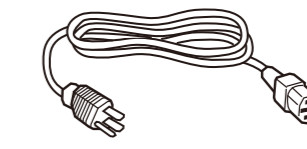
PHILIPS



Power



* CD

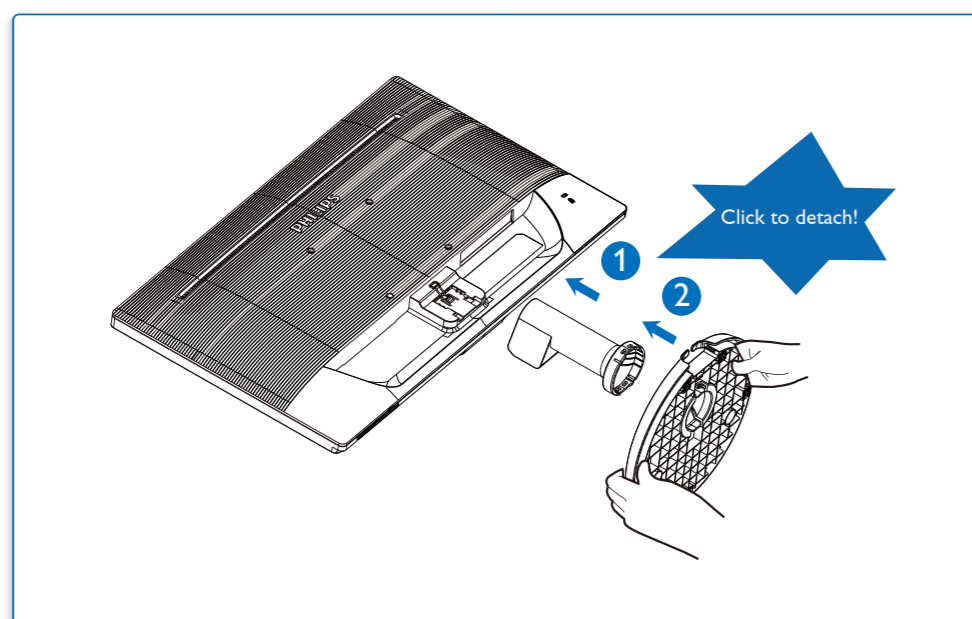


* VGA

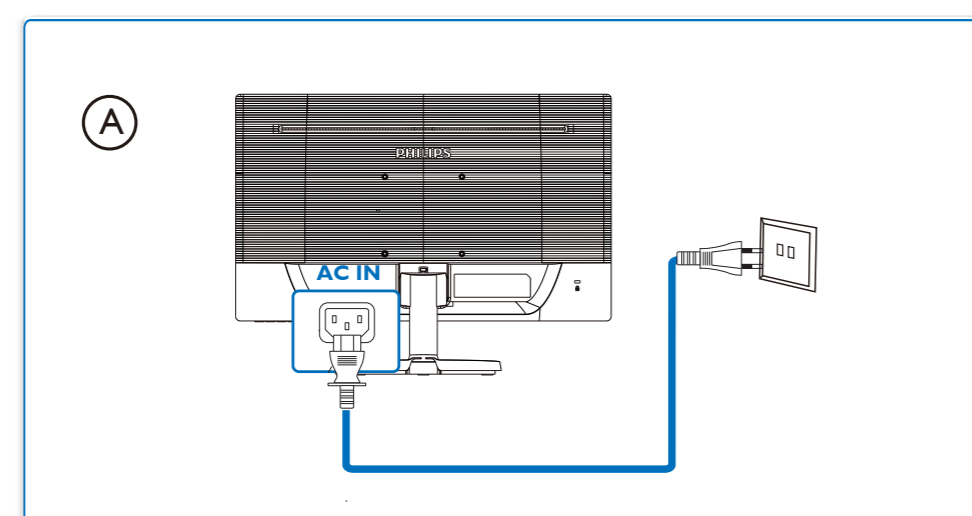
* DVI * Depends on the country

Display design may differ from that illustrated

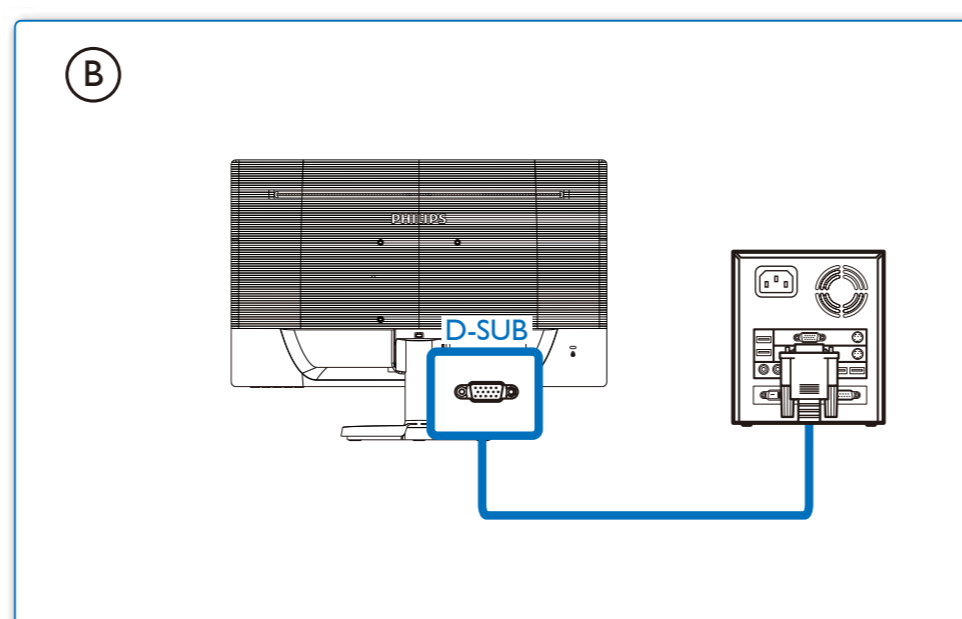
1



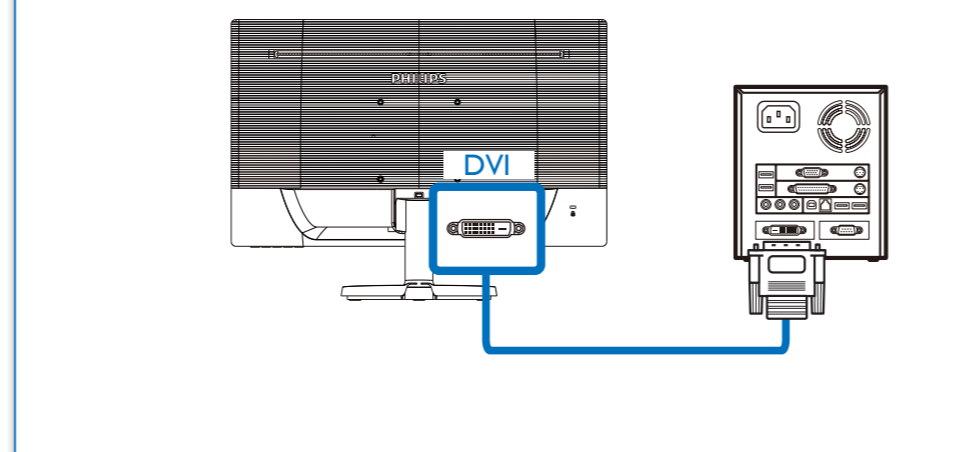
2



B



or



3

