

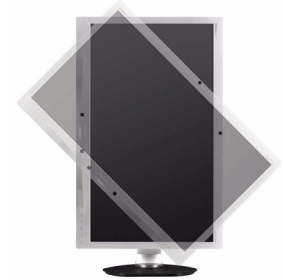


Philips Brilliance  
AMVA LCD monitor, LED  
backlight with Webcam

- P-line
- 27" / 68.6cm
- Full HD display

**Brilliance**

**271P4QPJKES**



## Sustainable eco design display

with Webcam saves time and money

The Philips AMVA LED display with Webcam helps you collaborate and communicate, saving you time and money.

### **Sustainable Eco-design**

- PowerSensor saves up to 80% energy costs
- 65% post consumer recycled plastics with TCO Edge
- PVC-BFR free housing

### **Brilliant performance**

- AMVA LED for wide-view super-high contrast, vivid images
- Webcam to connect and collaborate
- Built-in microphone for audio conferencing
- HDMI ensures universal digital connectivity
- DisplayPort offers audio and video over a single, long cable
- Built-in stereo speakers for multimedia
- USB Hub with 3 ports for easy connections

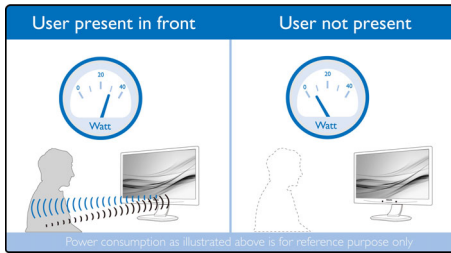
### **Designed for people**

- SmartErgoBase enables people-friendly ergonomic adjustments
- Low bezel-to-table height for maximum reading comfort

**PHILIPS**

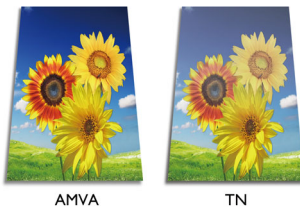
# Highlights

## PowerSensor



PowerSensor is a built-in 'people sensor' that transmits and receives harmless infrared signals to determine if user is present and automatically reduces monitor brightness when user steps away from the desk, cutting energy costs by up to 80 percent and prolonging monitor life

## AMVA LED display



Philips AMVA LED display uses an advanced multi-domain vertical alignment technology which gives you super-high static contrast ratios for extra vivid and bright images. While standard office applications are handled with ease, it is especially suitable for photos, web-browsing, movies, gaming, and demanding graphical applications. Its optimized pixel management technology gives you 178/178 degree extra wide viewing angle, resulting in crisp images even in 90 degree pivot mode

## Webcam

Embedded webcam and microphone enables you to view and communicate with your colleagues and clients. This simple solution allows you to collaborate and share, saving precious time and travel related costs.

## DisplayPort

DisplayPort is a digital link from PC to Monitor without any conversion. With higher capabilities than DVI standard, it is fully capable

to support up to 15meter cables and 10.8 Gbps/sec data transfer. With this high performance and zero latency, you get the fastest imaging and refresh rates - making DisplayPort the best choice for not only general office or home use, but also for the demanding gaming and movies, video editing and more. It also keeps interoperability in mind via use of various adapters.

## SmartErgoBase

The SmartErgoBase is a monitor base that delivers ergonomic display comfort and provides cable management. The base's people-friendly height, swivel, tilt and rotation angle adjustments position the monitor for maximum comfort that can ease the physical strains of a long workday; cable management reduces cable clutter and keeps the workspace neat and professional.

## HDMI Ready



A HDMI-ready device has all the required hardware to accept High-Definition Multimedia Interface (HDMI) input, high quality digital video and audio signals all transmitted over a single cable from a PC or any number of AV sources including set-top boxes, DVD players and A/V receivers and video cameras.

## 3 Ports USB 2.0 HUB

USB Hub allows user to conveniently connect their plug and play multimedia devices such as USB memory devices, camera, portable HDD, Web camera, PDA, Printer and many other devices which has USB connection available. The conveniently located USB 2.0 Hub on the monitor allows USB 2.0 signals to pass thru to the computer. Note that many devices like cameras and HDD may need to be powered On independently, as they have higher power

requirements than the monitor USB Hub can provide.

## Built-in stereo speakers

A pair of high quality stereo speakers built into a display device. It can be visible front firing, or invisible down firing, top firing, rear firing, etc depending on model and design.

## Low bezel-to-table height



The Philips monitor, thanks to its advanced SmartErgoBase, can be lowered down almost to desk level for a comfortable viewing angle. Low bezel-to-table height is the perfect solution if you use bifocals, trifocals or progressive lens glasses for your computing work. Additionally, it allows for users with greatly different heights to use the monitor in their preferred angle and height settings, helping them reduce fatigue and strain.

## TCO Edge

TCO Edge certification is given to products which go beyond existing eco-labeling programs. Over and above standard TCO requirements, it further mandates that the product uses minimum 65% of post consumer recycled plastics, is energy efficient, uses minimal hazardous materials, has 100% recyclable packaging, and is designed for easy recycling amongst other requirements. You can rest assured that this Philips monitor is a cutting edge technology product which is best in class ICT, benefitting you and the planet while helping you make a responsible green IT purchase!

## PVC-BFR free housing

This Philips monitor housing is free from brominated flame retardant and polyvinyl chloride (PVC-BFR free)



# Specifications

## Picture/Display

- LCD panel type: AMVA LCD
- Backlight type: W-LED system
- Panel Size: 27 inch / 68.6 cm
- Effective viewing area: 597.6 (H) x 336.15 (V)
- Aspect ratio: 16:9
- Optimum resolution: 1920 x 1080 @ 60Hz
- Response time (typical): 12 ms
- SmartResponse (typical): 6 ms (Gray to Gray)
- Brightness: 300 cd/m<sup>2</sup>
- Contrast ratio (typical): 5000:1
- SmartContrast: 20,000,000 :1
- Pixel pitch: 0.311 x 0.311 mm
- Viewing angle: 178° (H) / 178° (V), @ C/R > 10
- Picture enhancement: SmartImage
- Display colors: 16.7 M
- Scanning Frequency: 30 - 83 kHz (H) / 56 - 75 Hz (V)
- sRGB

## Connectivity

- Signal Input: DisplayPort, HDMI, DVI-D (digital, HDCP), VGA (Analog)
- USB: USB 2.0 x 3
- Sync Input: Separate Sync, Sync on Green
- Audio In/Out: PC audio-in, Headphone out

## Convenience

- Built-in Speaker: 2Wx2
- Built-in webcam: 2.0 megapixel camera with microphone and LED monitor
- User convenience: SmartImage, Volume, PowerSensor, Menu, Power On/Off
- Control software: SmartControl Premium
- OSD Languages: English, French, German, Italian, Portuguese, Russian, Simplified Chinese, Spanish
- Other convenience: Kensington lock, VESA mount (100x100mm)
- Plug & Play Compatibility: DDC/CI, Mac OS X, sRGB, Windows 7/Vista/XP

## Stand

- Height adjustment: 150 mm
- Pivot: 90 degree
- Swivel: -65/65 degree
- Tilt: -5/20 degree

## Power

- ECO mode: 23 W (typ.)
- On mode: 27.6 W (EnergyStar 5.0 test method)
- Standby mode: 0.3 W
- Off mode: Zero watts with Zero switch
- Power LED indicator: Operation - White, Standby mode- White (blinking)
- Power supply: 100-240VAC, 50-60Hz, Built-in

## Dimensions

- Product with stand (mm): 639 x 580 x 242 mm
- Product without stand (mm): 639 x 405 x 64 mm
- Packaging in mm (WxHxD): 750 x 234 x 490 mm

## Weight

- Product with stand (kg): 7.50 kg
- Product without stand (kg): 5.10 kg
- Product with packaging (kg): 10.35 kg

## Operating conditions

- Temperature range (operation): 0°C to 40°C °C
- Temperature range (storage): -20°C to 60°C °C
- Relative humidity: 20%-80 %
- Altitude: Operation: +12,000ft (3,658m), Non-operation: +40,000ft (12,192m)
- MTBF: 30,000 hour(s)

## Sustainability

- Environmental and energy: PowerSensor, EnergyStar 5.0, EPEAT Gold\*, TCO edge, RoHS
- Recyclable packaging material: 100 %
- Post consumer recycled plastic: 65%
- Specific Substances: PVC / BFR free housing, Mercury free, Lead free

## Compliance and standards

- Regulatory Approvals: BSMI, CE Mark, FCC Class B, GOST, SASO, SEMKO, TUV Ergo, TUV/GS, TCO 5.2, UL/cUL, WEEE

## Cabinet

- Front bezel: Silver
- Rear cover: Black
- Foot: Black
- Finish: Texture



Issue date 2013-06-06

Version: 4.0.1

12 NC: 8670 000 93327  
EAN: 87 12581 65484 9

© 2013 Koninklijke Philips N.V.  
All Rights reserved.

Specifications are subject to change without notice.  
Trademarks are the property of Koninklijke Philips N.V.  
or their respective owners.

[www.philips.com](http://www.philips.com)

\* EPEAT Gold is valid only where Philips registers the product. Please visit [www.epeat.net](http://www.epeat.net) for registration status in your country.