



Philips Brilliance  
LCD monitor

Notebook docking display  
23" (58.4 cm)

**Brilliance**



231P4UPES

## Simplicity with notebook docking display

expand view with single cable

This innovative notebook docking display with multimedia enables easy port replication. Now you can expand your viewing workspace, keep your peripherals connected, and access internet. All with a single SuperSpeed USB cable.

### Simplicity makes sense

- Single USB 3.0 cable docks your notebook to the display
- Transmit video and audio from the notebook with single cable
- Connect with Internet, Intranet with built in ethernet port
- Access all peripherals and keyboard, mouse from the hub
- True plug and play for hassle free dual display setup

### Sustainable Eco-friendly solution

- PowerSensor saves up to 80% energy costs
- PVC-BFR free housing

### Ergonomic design

- SmartErgoBase enables people-friendly ergonomic adjustments
- Low bezel-to-table height for maximum reading comfort

**PHILIPS**

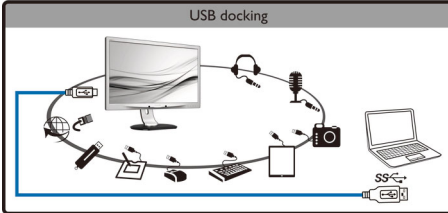
# Highlights

## Expand view with single cable



This innovative large Philips display enables easy port replication for any notebook. Especially suitable for latest Ultra book type devices with limited connectors, this display with built-in USB 3.0 hub, Ethernet, and stereo speakers enables you to transmit video, audio, and connect to internet or intranet directly with a single cable USB connection. By this advanced USB 3.0 or USB 2.0 plug and play connection, you can now expand your desktop using both your NBPC and Philips display's real-estate without having to worry about cumbersome resolution adjustments or mess around with cables.

## USB hub for peripherals



You can now connect optional full sized Keyboard and mouse to this innovative Philips display's USB hub to improve your productivity. Simply connect your Notebook to this display with a single USB cable, and you

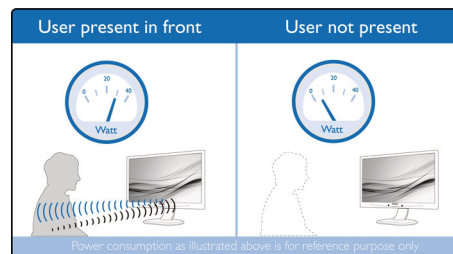
are ready to utilize the attached additional peripherals like external HDD, camera, USB drive along with Full HD video, Audio, and Internet functions. Should you prefer, you can of course still utilize your NBPC's keyboard and track pad as usual.

## SmartErgoBase



The SmartErgoBase is a monitor base that delivers ergonomic display comfort and provides cable management. The base's people-friendly height, swivel, tilt and rotation angle adjustments position the monitor for maximum comfort that can ease the physical strains of a long workday; cable management reduces cable clutter and keeps the workspace neat and professional.

## PowerSensor



PowerSensor is a built-in 'people sensor' that transmits and receives harmless infrared

signals to determine if user is present and automatically reduces monitor brightness when user steps away from the desk, cutting energy costs by up to 80 percent and prolonging monitor life

## Low bezel-to-table height



The Philips monitor, thanks to its advanced SmartErgoBase, can be lowered down almost to desk level for a comfortable viewing angle. Low bezel-to-table height is the perfect solution if you use bifocals, trifocals or progressive lens glasses for your computing work. Additionally, it allows for users with greatly different heights to use the monitor in their preferred angle and height settings, helping them reduce fatigue and strain.

## PVC-BFR free housing

This Philips monitor housing is free from brominated flame retardant and polyvinyl chloride (PVC-BFR free)



# Specifications

## Picture/Display

- LCD panel type: TFT-LCD
- Backlight type: W-LED system
- Panel Size: 23 inch / 58.4 cm
- Effective viewing area: 509.18 x 286.41 mm
- Aspect ratio: 16:9
- Optimum resolution: 1920 x 1080 @ 60Hz
- Response time (typical): 5 ms
- Brightness: 250 cd/m<sup>2</sup>
- Contrast ratio (typical): 1,000:1
- SmartContrast: 20,000,000:1
- Pixel pitch: 0.265 x 0.265 mm
- Viewing angle: 170° (H) / 160° (V), @ C/R > 10
- Picture enhancement: SmartImage
- Display colors: 16.7 M
- Scanning Frequency: 30 -83 kHz (H) / 56 -75 Hz (V)
- sRGB

## Connectivity

- Signal Input: VGA (Analog)
- Sync Input: Separate Sync (VGA only), Sync on Green (VGA only)
- Audio (In/Out): PC audio-in, Headphone out

## USB Connectivity

- USB: USB 2.0 x 1, USB 3.0 x 2
- Signal Input: USB 3.0 upstream
- Audio In/Out: through USB
- RJ45: through USB, 1Gbps
- Microphone in: through USB
- Headphone out: through USB

## Convenience

- Built-in Speakers: 1.5Wx2
- User convenience: SmartImage, Input, PowerSensor, Menu, Power On/Off
- Control software: SmartControl Premium (VGA only), DisplayLink Graphics Software
- OSD Languages: English, French, German, Italian, Portuguese, Russian, Simplified Chinese, Spanish, Brazil Portuguese, Czech, Dutch, Finnish, Greek, Hungarian, Japanese, Korean, Polish, Swedish, Traditional Chinese, Turkish, Ukrainian
- Other convenience: Kensington lock, VESA mount (100x100mm)
- Plug & Play Compatibility: DDC/CI (VGA only), Mac OS X, sRGB, Windows 8/7/Vista/XP

## Stand

- Height adjustment: 130 mm
- Pivot: 90 degree
- Swivel: -65/65 degree
- Tilt: -5/20 degree

## Power

- ECO mode: 15.3 W (typ.)
- On mode: 26.2 W (typ.)
- Standby mode: 0.1 W
- Off mode: Zero watts with Zero switch
- Power LED indicator: Operation - White, Standby mode- White (blinking)
- Power supply: 100-240VAC, 50-60Hz, Built-in

## Dimensions

- Product with stand(max height): 547 x 515 x 220 mm
- Product without stand (mm): 547 x 343 x 60 mm
- Packaging in mm (WxHxD): 600 x 400 x 263 mm

## Weight

- Product with stand (kg): 5.30 kg
- Product without stand (kg): 3.10 kg
- Product with packaging (kg): 7.60 kg

## Operating conditions

- Temperature range (operation): 0°C to 40°C °C
- Temperature range (storage): -20°C to 60°C °C
- Relative humidity: 20%-80 %
- Altitude: Operation: +12,000ft (3,658m), Non-operation: +40,000ft (12,192m)
- MTBF: 30,000 hour(s)

## Sustainability

- Environmental and energy: PowerSensor, TCO Certified Edge, RoHS
- Recyclable packaging material: 100 %
- Post consumer recycled plastic: 65%
- Specific Substances: PVC / BFR free housing, Mercury free

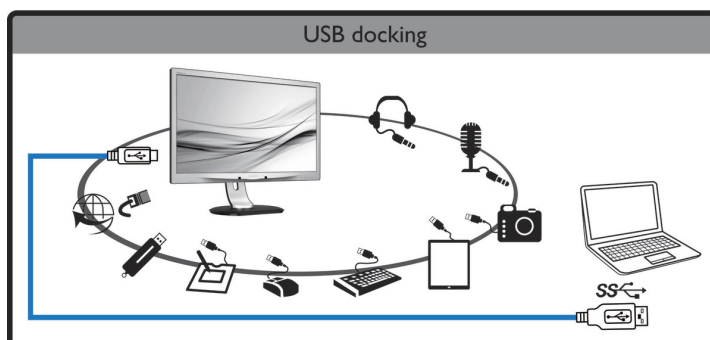
## Compliance and standards

- Regulatory Approvals: BSMI, CE Mark, FCC Class B, GOST, PSB, SASO, SEMKO, TUV Ergo, TUV/ GS, UL/cUL, WEEE

## Cabinet

- Front bezel: Silver

- Rear cover: Black
- Foot: Black
- Finish: Texture



Issue date 2021-02-25

Version: 5.0.1

12 NC: 8670 001 00077  
EAN: 87 12581 67694 0

© 2021 Koninklijke Philips N.V.  
All Rights reserved.

Specifications are subject to change without notice.  
Trademarks are the property of Koninklijke Philips N.V.  
or their respective owners.

[www.philips.com](http://www.philips.com)

\* We recommend to use USB 3.0 connection between your Notebook PC and the Philips display to ensure smooth images, video and audio.

\* Activities such as screen sharing, on-line streaming video and audio over the Internet can impact your network performance. Your hardware, network bandwidth and its performance will determine overall audio and video quality.

\* The notebook, keyboard, mouse as shown are for illustration purpose only, not included in the product.