

Philips 5000 series  
Wireless keyboard

## 2.4 GHz Wireless

Detachable palm rest  
Intelligent power saving

SPK6507B



# Performance meets comfort

Be comfortable while staying productive. This keyboard is designed with a detachable palm rest, multimedia shortcuts and a 2.4G wireless connection for the best working efficiency possible.

### Wireless convenience

- 2.4 G wireless connection for a completely cordless workspace
- Intelligent power saving

### Designed with comfort in mind

- Ergonomic palm rest for extra comfort

### Philips reliability

- Keys last millions of keystrokes for durability
- Laser-engraved keys look great and last longer

### Designed for performance

- Convenient multi-media shortcuts
- Low-profile keys are quick and stylish looking

# PHILIPS

Wireless keyboard  
2.4 GHz Wireless Detachable palm rest, Intelligent power saving

SPK6507B/39

# Highlights

## Keystrokes for durability



Keys last millions of keystrokes for durability

## 2.4 G wireless connection



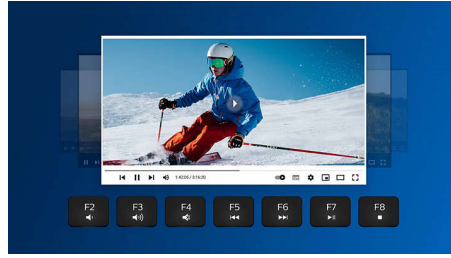
Keep the computer wires at bay. For any keyboard/mouse equipped with this feature, you can connect the accessory to any PC via a speedy 2.4 Hz wireless connection. The simple setup process, along with the accessory's sleek design, is sure to leave your workspace looking clean and wire-free.

## Ergonomic palm rest



The palm rest helps position your hands comfortably on the keyboard, and offers a comfortable place to rest your palms when you are not typing.

## Multi-media shortcuts



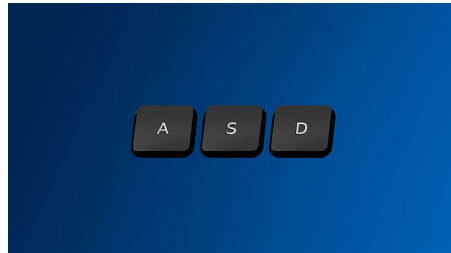
With these multi-media shortcuts, you can easily switch to music, volume or video play by a simple click.

## Intelligent power saving



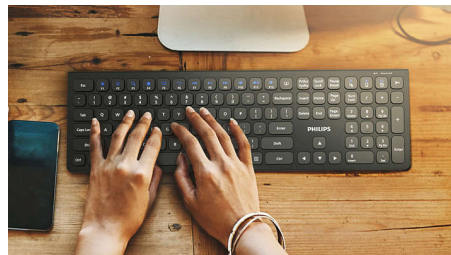
With the intelligent power-saving function, this keyboard can go into standby and therefore save power when not in use.

## Laser-engraved keys



Laser-engraved keys look great, are easy to read and last longer. A premium choice.

## Low-profile keys



The low-profile keys add a stylish look and are quick and responsive for typing.

# Specifications

## OS/System Requirements

- System Requirements: Microsoft Windows 7, Windows 8, Windows 10 or later; Linux V1.24 and above; Mac OS 10.5 and above

## Physical Dimensions

- Dimensions (L x W x H): 433 x 196 x 22 mm
- Weight: 739 g

## Technical specifications

- Front Panel Colour: Black
- Coating Type: Matte/Rubber paint
- Connectivity: 2.4 GHz wireless
- Design Type: Ergonomic and stylish design
- Driver Requirement: Driver-free
- Product Type: wireless keyboard
- Front Panel Material: Plastics front panel
- Key Lifespan: 10 million keystrokes
- Keys: 110 keys



Issue date 2024-04-01

Version: 4.0.1

EAN: 87 12581 78295 5

© 2024 Koninklijke Philips N.V.  
All Rights reserved.

Specifications are subject to change without notice.  
Trademarks are the property of Koninklijke Philips N.V.  
or their respective owners.

[www.philips.com](http://www.philips.com)