

PHILIPS



Wet and Dry electric
shaver

Shaver series 9000

Pressure Guard sensor

Dual SteelPrecision blades

Dermatologically tested

360 D Flexing heads



S9982/59

Superior closeness*, personalised skin comfort with SkinIQ Technology

The most intelligent shaver powered by A.I gives you incredible skin comfort. Get feedback on shaving pressure to protect your skin, while cutting hair closer, even on 5-day beards. It senses, guides and adapts to your unique face.

A close shave

- Follows the contours of your face
- Advanced precision for a closer shave*
- Smooth gliding for better skin protection

SkinIQ technology

- Helps you to shave with optimal pressure
- Adjusts to your beard for effortless shaving
- Master your technique with the Philips GroomTribe app
- Guides you to an improved technique with fewer passes

For a convenient shave

- Powerful cleaning pod for maintenance and hygiene
- 60 minutes of shaving from a 1 hour charge
- Choose a convenient dry or refreshing wet shave
- Even up your moustache and sideburns
- 5 length settings for versatile beard grooming

Shaver series 9000

Wet and Dry electric shaver

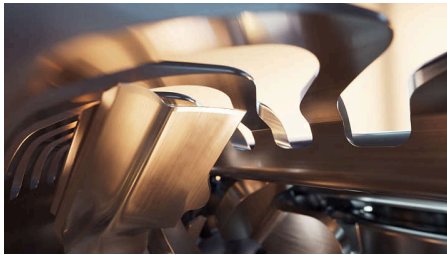
S9982/59

Highlights

Pressure Guard sensor

Using the right pressure is key for closeness and skin protection. Advanced sensors in the shaver read the pressure you apply, and the innovative light signal shows when you are pressing too hard or too little. For a personalised shave that is just right for you.

Dual SteelPrecision blades



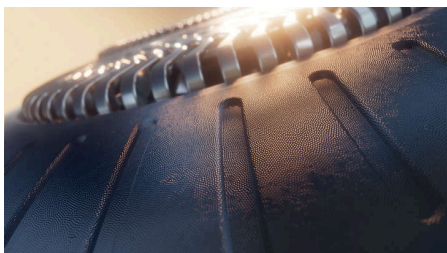
With up to 150.000 cutting actions per minute, the Dual SteelPrecision blades shave close. The 72 high-performance blades are self-sharpening and made in Europe.

Motion Control sensor



Motion-sensing technology tracks how you shave and guides you to a more efficient technique via our GroomTribe app. After just three shaves, the majority of men achieved a better shaving technique for fewer passes**.

Protective SkinGlide coating



A protective coating lies between the shaver heads and your skin. Made of up to 2000 micro-spheres that coat every square millimetre. Minimise irritation by reducing 25% of friction on skin***.

Power Adapt sensor

The intelligent facial-hair sensor reads hair density 500 times per second. The technology auto-adapts cutting power for an effortless and gentle shave.

360 D Flexing heads



Designed to follow the contours of your face, this Philips electric shaver has fully flexible heads that turn 360° for a thorough and comfortable shave.

Personalisation via app

Pair your Philips electric shaver with the GroomTribe app and prepare to master your technique. Just track your progress and personalise your routine to achieve a shave that's both close and kind.

Cable-free Quick Clean Pod



10 x more effective than cleaning with water****, the powerful cleaning pod thoroughly cleans and lubricates your shaver in just 1 minute. Using it helps maintain shaver performance and increase hygiene.

Shave wet or dry



A wet and dry shaver that adapts to your preferences. Choose a convenient dry shave or pair with your favourite foam or gel for a refreshing wet shave.

Pop-up trimmer

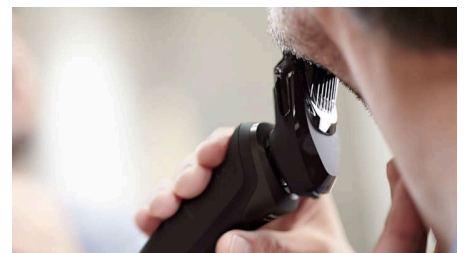


Refine and define your moustache and sideburns with the pop-up trimmer—and complete your look with ease.

60 minutes of cordless shaving

A shaver for use at home or on the go. Get 60 minutes of shaving time from a 1 hour charge or plug it in for instant and continuous power.

Beard styler attachment



With the choice of 5 different length settings, the beard styler attachment can create anything from the perfect stubble to a short, neatly trimmed beard. It's also useful for a pre-shave trim.

Shaver series 9000

Wet and Dry electric shaver

S9982/59

Specifications

Accessories

Attachments: Beard styler

Charging stand

Maintenance: Cleaning brush

Quick Clean Pod: Yes, 1 cartridge included

Integrated pop-up trimmer

Travel and storage: Travel case

Software

App: GroomTribe, Connects via Bluetooth®

Smartphone compatibility: iPhone and

Android™ devices

Power

Charging: 1 hour full charge, 5-min quick charge

Battery type: Li-Ion

Run time: 60 minutes

Automatic voltage: 100-240 V

Max power consumption: 9 W

Design

Handle: Rubber grip

Colour: Ice Blue

Shaving heads: Angular

Service

2 year warranty

Replacement head SH91: Replace every 2 yrs with SH91

Shaving Performance

Shaving system: Dual SteelPrecision blades

Contour following: 360 D Flexing heads

SkinIQ technology: Pressure Guard sensor, Protective SkinGlide coating, Motion Control sensor, Power Adapt sensor

Ease of use

Cleaning: One-touch open, Fully washable

Display: Advanced OLED display, Pressure guidance, Battery level indicator, Motion control indicator, Travel lock

Wet & Dry: Wet and dry use

