

# PHILIPS

## EVNIA



OLED gaming  
monitor

Gaming Monitor

Evnia 8000

42 (41.54" / 105.5 cm diag.)

3840 x 2160 (4K UHD)



42M2N8900

## Gaming beyond innovation

Be prepared to get stunned by the precise color reproduction of Evnia OLED gaming monitor. The innovative Ambiglow redefines what gaming environment usually is, levelling up not only your game gear, but also your gaming experience.

### Features designed for gamers needs

- AI-enhanced Ambiglow: for intensified entertainment
- Evnia Precision Center: Maximize Your Gaming Experience
- Dynamic Lighting: Synchronize lighting on all devices.
- LowBlue mode and Flicker-free easy-on-the eyes viewing
- Access and display multiple sources on two devices
- Connect your notebook with one USB-C cable
- Enhanced audio with DTS Sound™

### Built for fast action

- AMD FreeSync™ Premium; tear free, stutter free, fluid gaming
- SmartImage game mode optimized for gamers
- VESA ClearMR 8000: for trusted, high-quality imagery

### Immersive visuals

- OLED display for lifelike visuals with deeper black details
- Ultra Wide-Color wider range of colors for a vivid picture

# Gaming Monitor

OLED gaming monitor

42M2N8900/00

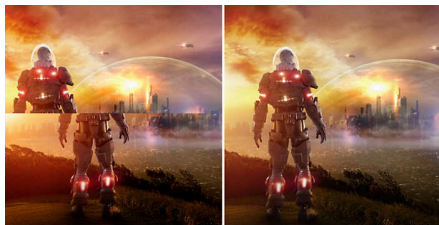
## Highlights

### Philips OLED display



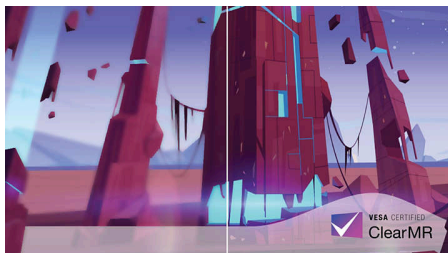
This Philips OLED display delivers a wider viewing angle and a uniquely lifelike visuals. Deeper black for stunning viewing experience. Details in shadows and highlights are precisely reproduced.

### AMD FreeSync™ Premium



Gaming shouldn't be a choice between choppy gameplay or broken frames. AMD FreeSync™ Premium equips serious gamers with a fluid, tear-free gameplay experience at peak performance. There are no compromises, game confidently with a high refresh rate, low framerate compensation, and low latency.

### VESA ClearMR 8000



Previously, methods to test blurry imagery were measured through MRPT. VESA Certified ClearMR acts as an alternative to MRPT and blur is tested with a digital high-speed camera. For monitors that are sent in and certified through VESA Certified ClearMR, you can rest assured that you will have an accurate assessment of the monitor's blur quality. Each certification is

defined through a CMR range, with the highest tier being VESA ClearMR 8000. With this monitor being ClearMR 8000 classified, it has one of the highest classifications of image quality, meaning less overall blur.

### Dynamic Lighting



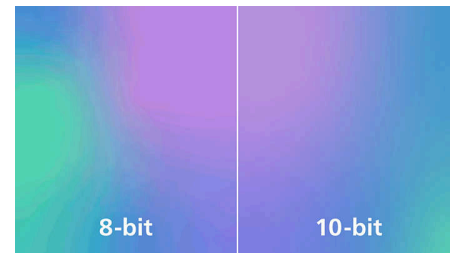
This feature is a Microsoft certification program that enables with users Windows 11 to synchronize and manage the RGB lighting of all their monitors and peripherals from one menu. By doing this, the Dynamic Lighting feature creates a complete RGB lighting ecosystem with Philips Evnia Ambiglow across all devices that ultimately caters to a customizable user experience.

### UltraClear 4K UHD resolution



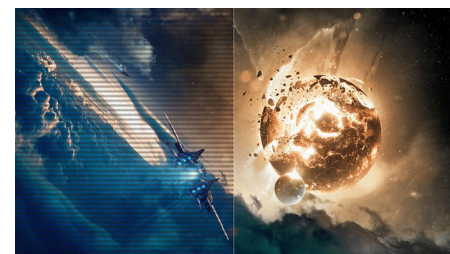
These Philips displays utilize high performance panels to deliver UltraClear, 4K UHD (3840 x 2160) resolution images. Whether you are demanding professional requiring extremely detailed images for CAD solutions, using 3D graphics applications or a financial wizard working on huge spreadsheets, Philips displays will make your images and graphics come alive.

### True 10-bit color depth



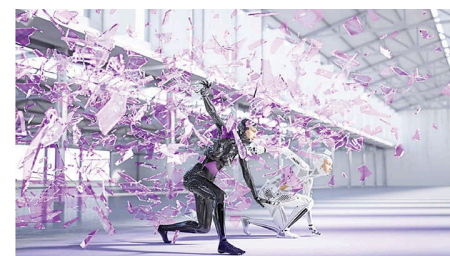
With this Philips true 10-bit color display, you can see color critical professional work of exceptional color accuracy and meeting professional standards. Compared with conventional 8-bit color display, this Philips monitor produces a more natural transition between hues for smoother gradients.

### LowBlue mode & Flicker-free



Our LowBlue Mode and Flicker-free technology have been developed to reduce eye strain and fatigue often caused by long hours in front of a monitor.

### DTS Sound™



DTS Sound is an audio processing solution designed to optimize the playback of music, movies, streaming and games on the PC regardless of form factors. DTS Sound enables an immersive virtual surround sound experience, complete with rich bass and dialog enhancement and maximized volume levels free of any clipping or distortion.



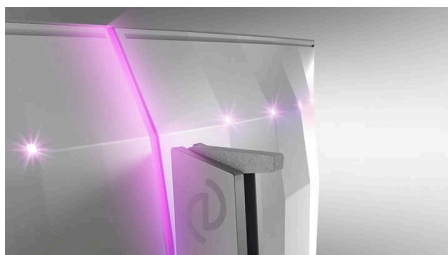
## Highlights

### MultiView and built-in KVM



Control and switch between two devices through a single keyboard and mouse with the built-in KVM. MultiView lets you survey both sources simultaneously on one screen. With these features, you can reduce cable clutter and save valuable time. Perfect for streamers with two PCs, content creators or when prepping devices for a LAN event.

### AI-enhanced Ambiglow



Our AI-enhanced processor analyzes the incoming image content and continuously adapts the color and brightness of the emitted light to match the image. This feature adds a new dimension to your viewing experience. The innovative Ambiglow uses its AI capabilities to create a truly immersive and customizable gaming experience. From filling your gaming room with color to feeling like you are part of

the game, the AI-enhanced Ambiglow is made to make your gaming experience the best it's ever been by combining intelligence, color, and light.

### USB-C connection



This Philips display features a USB type-C connector with power delivery. With intelligent and flexible power management, you can power charge your compatible device directly. Its slim, reversible USB-C allows for easy, one-cable connection. You can watch high resolution video and transfer data at a super-speed, while powering up and re-charging your compatible device at the same time.

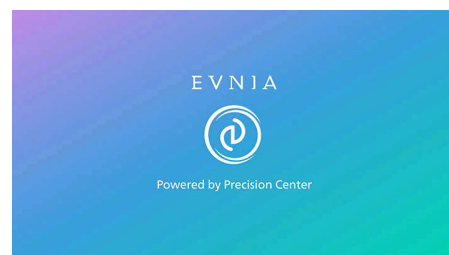
### SmartImage Game mode



The new Philips gaming display has quick access OSD fine tuned for gamers, offering you multiple options. "FPS" mode (First person shooting)

improves dark themes in games, allowing you to see hidden objects in dark areas. "Racing" mode adapts display with fastest response time, high color, along with image adjustments. "RTS" mode (Real time strategy) has a special SmartFrame mode which enables highlighting of specific area and allows for size and image adjustments. Gamer 1 and Gamer 2 enable you to save personal customized settings based on different games, ensuring best performance.

### Evnia Precision Center



Evnia Precision Center is an easy-to-use software designed to optimize and personalize your Evnia monitor. Whether you're a casual or competitive gamer, it offers a wide range of customization options to match your unique gaming style. With intuitive controls and seamless navigation, Evnia Precision Center gives you full control, providing everything you need to elevate your gaming to the next level—right at your fingertips.



## Specifications

### Picture/Display

**Panel Size:** 41.54 inch / 105.5 cm

**Aspect ratio:** 16:9

**Monitor Panel Type:** OLED

**Pixel pitch:** 0.2395 x 0.2395 mm

**Brightness:** Peak: 450 nit, Normal: 135 nit

**Display colors:** Color support 1.07 billion colors (10 bit)

**Color gamut (typical):** NTSC 110.3%\*, sRGB 131.3%\*, Adobe RGB 93.6%\*

**Color gamut (min.):** DCI-P3: 98.5%\*

**Contrast ratio (typical):** 1,500,000:1

**SmartContrast:** Mega Infinity DCR

**Response time (typical):** 0.1 ms (Gray to Gray)\*

**Viewing angle:** 178° (H) / 178° (V), @ C/R > 10000

**Picture enhancement:** SmartImage game

**Maximum resolution:** 3840 x 2160 @ 138 Hz\* (overclock)

**Effective viewing area:** 919.68 (H) x 517.32 (V)

**Scanning Frequency:** 30 - 255 kHz (H) / 48 - 138 Hz (V)

sRGB

**Delta E:** < 2 (sRGB)

**Flicker-free**

**Pixel Density:** 106.06 PPI

**LowBlue Mode**

**Display Screen Coating:** Anti-Glare, Low-reflection 2%, Haze 25%

**Low Input Lag**

**EasyRead**

**AMD FreeSync™ technology:** Premium

**HDR:** HDR 10 supported

**Ambiglow:** 3-sided

**Pixel format:** RWBG Strip arrangement

**Windows Dynamic Lighting**

### Connectivity

**Signal Input:** HDMI 2.1 x 2, DisplayPort 1.4 x 1, USB-C x 1 (DP Alt mode, Power Delivery)

**Sync Input:** Separate Sync

**Audio (In/Out):** Audio out

**HDCP:** HDCP 1.4 (HDMI / DisplayPort / USB-C), HDCP 2.2 (HDMI / DisplayPort / USB-C), HDCP 2.3 (HDMI / DisplayPort / USB-C)

**USB Hub:** USB version 3.2 Gen1 / 5Gbps, USB-B upstream x 1, USB-A downstream x 4 (with 2 for fast charge B.C 1.2)

### Power Delivery

**Max power delivery:** USB-C up to 90 W (5V/3A, 7V/3A, 9V/3A, 10V/3A, 12V/3A, 15V/3A, 20V/4.5A)

**Version:** USB PD version 3.0

### Convenience

**Built-in Speakers:** 10 W x 2, DTS

**Plug & Play Compatibility:** DDC/CI, Mac OS X, sRGB, Windows 11 / 10 / 8.1 / 8

**User convenience:** Power On/Off, Menu/OK, Input/Up, Game Settings/Down, SmartImage game/Back

**OSD Languages:** Brazil Portuguese, Czech, Dutch, English, Finnish, French, German, Greek,

Hungarian, Italian, Japanese, Korean, Polish, Portuguese, Russian, Spanish, Simplified Chinese,

Swedish, Turkish, Traditional Chinese, Ukrainian

**Other convenience:** Kensington lock, VESA

mount (100x100mm)

**MultiView:** PIP/PBP mode, 2x devices

**KVM**

### Stand

**Height adjustment:** 120 mm

**Swivel:** -/+ 20 degree

**Tilt:** -5/15 degree

### Power

**Power supply:** Internal, 100-240VAC, 50-60Hz

**Off mode:** 0.3 W (typ.)

**On mode:** 69.6 W (typ.)

**Standby mode:** 0.5 W (typ.)

**Power LED indicator:** Operation - White, Standby mode- White (blinking)

**Energy Label Class:** G

### Dimensions

**Packaging in mm (WxHxD):** 1070 x 635 x 188 mm

**Product without stand (mm):** 932 x 535 x 79 mm

**Product with stand(max height):** 932 x 689 x 359 mm

### Weight

**Product with packaging (kg):** 21.01 kg

**Product with stand (kg):** 17.30 kg

**Product without stand (kg):** 13.84 kg

### Operating conditions

**Altitude:** Operation: +12,000ft (3,658m), Non-operation: +40,000ft (12,192m)

**Temperature range (operation):** 0°C to 40 °C

**MTBF:** 30,000 hour(s)

**Relative humidity:** 20%-80 %

**Temperature range (storage):** -20°C to 60 °C

### Sustainability

**Environmental and energy:** RoHS

**Recyclable packaging material:** 100 %

**Specific Substances:** Mercury free, PVC / BFR free housing

### Compliance and standards

**Regulatory Approvals:** CB, CE Mark, FCC Class B, ICES-003, CU-EAC, EAEU RoHS, TUV/ISO9241-307, TUV-BAUART, cETLus

### Cabinet

**Color:** White

**Finish:** Textured

### What's in the box?

**Cables:** HDMI cable, DisplayPort cable, USB upstream cable, USB-C to USB-C cable, Power cable

**Monitor with stand**

**User Documentation**

**Accessory:** Remote control, VESA bracket



\* For best output performance, please always ensure that your graphic card is capable of achieving the maximum resolution and refresh rate of this Philips display.

\* Response time value equal to SmartResponse

\* DCI-P3 Coverage based on CIE1976

\* NTSC Area based on CIE1976

\* sRGB Area based on CIE1931

\* Adobe RGB Coverage based on CIE1976

\* For USB-C power and charging function, your Notebook/device must support USB-C standard Power Delivery specifications. Please check with your Notebook user manual or manufacturer for more details.

\* For Video transmission via USB-C, your Notebook/device must support USB-C DP Alt mode

\* 2020 Advanced Micro Devices, Inc. All rights reserved.

AMD, the AMD Arrow logo, AMD FreeSync™ and combinations thereof are trademarks of Advanced Micro Devices, Inc. Other product names used in this publication are for identification purposes only and may be trademarks of their respective companies.

\* The monitor may look different from feature images.