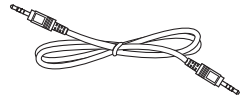
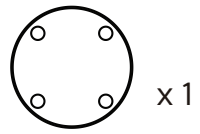


RS232



RS232 Daisy Chain Cable



x1



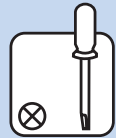
x2



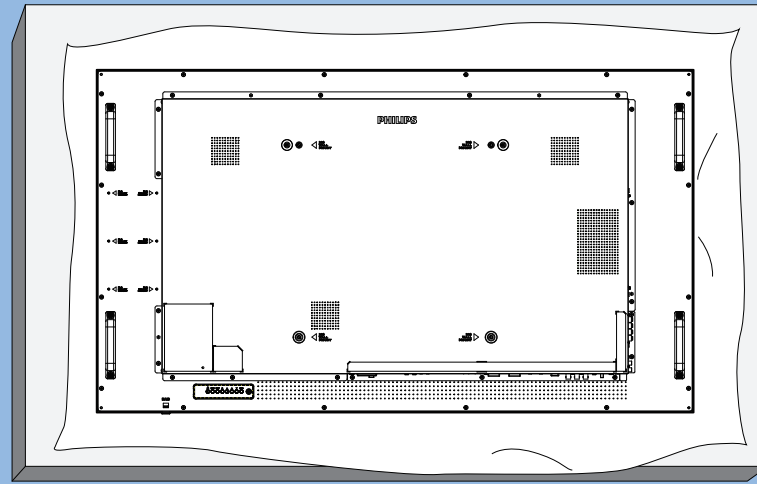
x8

\* Differences according to regions.

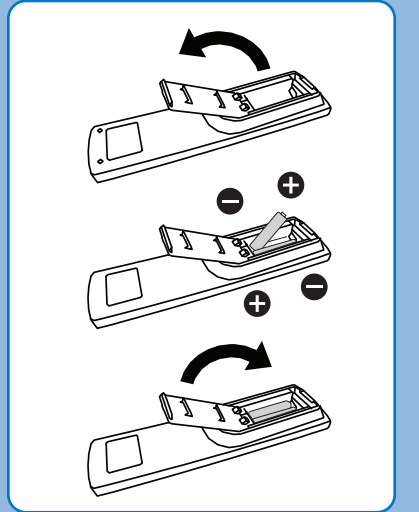
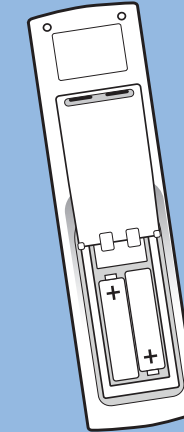
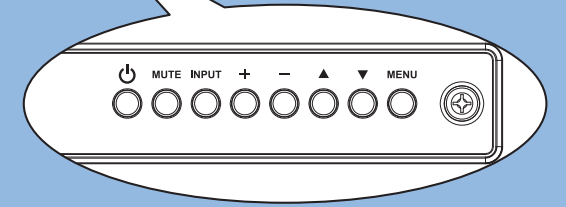
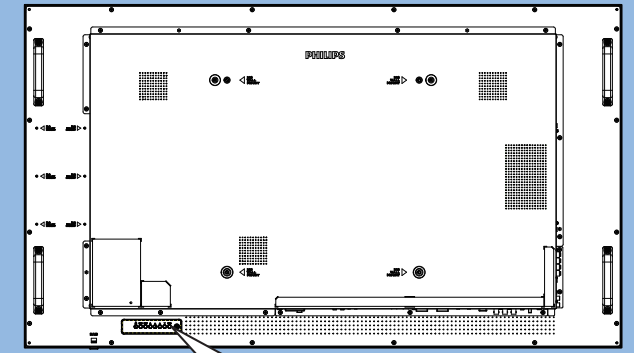
Display design and accessories may differ from those illustrated above.



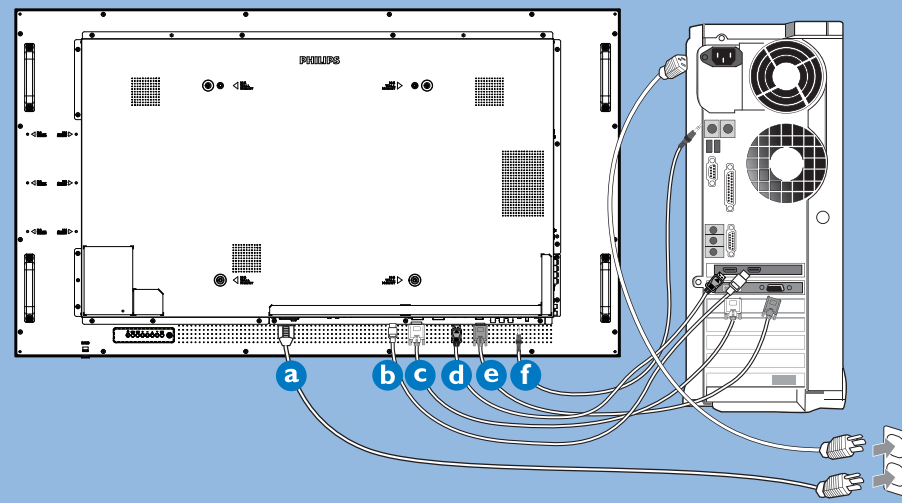
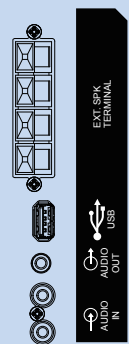
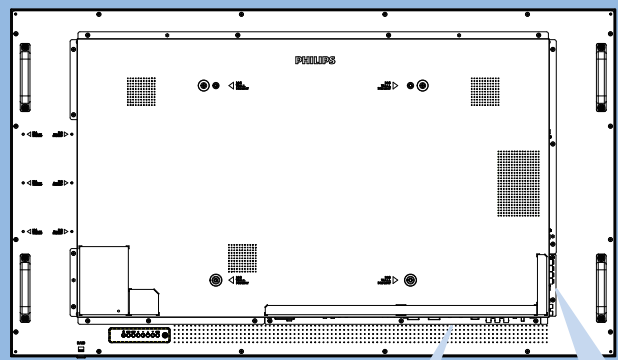
1



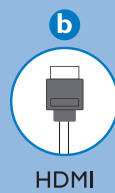
2



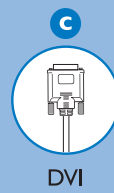
3



AC IN



HDMI



DVI



DP

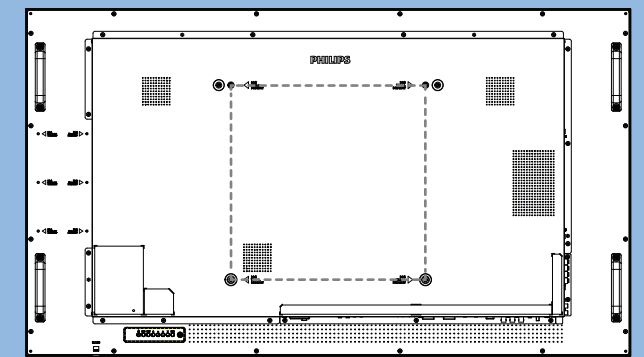


VGA

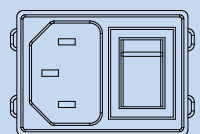


Audio

4

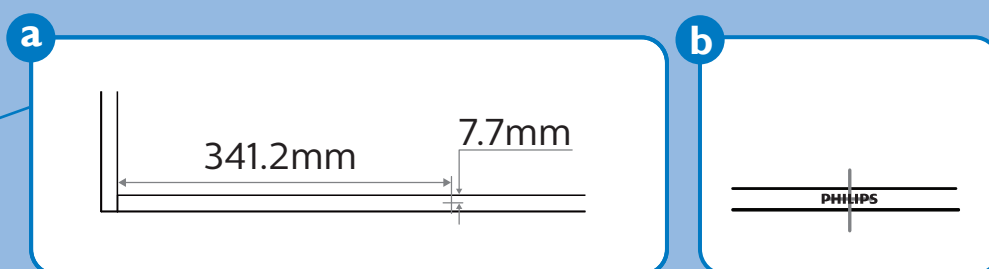
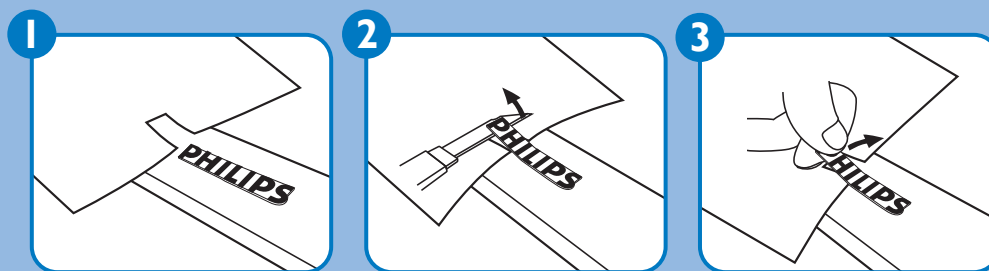
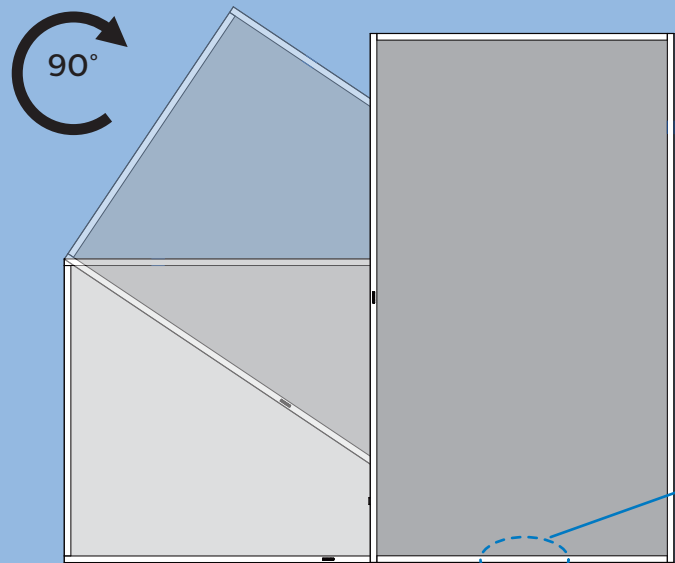


M6 \* (10+X) mm  
(X=Thickness of Wall mount BKT)  
55BDL3202H: 400mm x 400mm



IR-IN IR-OUT RS232C IN RS232C OUT RJ45 RJ45 HDMI1 IN HDMI2 IN DVI IN DVI OUT DP IN DP OUT VGA IN Pr Pb Y/CVBS PC LINE IN SPEAKER SWITCH

5



# Quick Start



Please check out the website below for more product information.  
[www.philips.com/signagesolutions-support](http://www.philips.com/signagesolutions-support)



Envision Peripherals Inc.  
 490 N McCarthy Blvd, Suite #120  
 Milpitas, CA 95035  
 USA

© 2019 Koninklijke Philips N.V. All rights reserved.  
 Philips and the Philips Shield Emblem are registered  
 trademarks of Koninklijke Philips N.V. and are used under  
 license from Koninklijke Philips N.V.

Specifications are subject to change without notice.  
 Version: V1.00 2019-11-06



Q41G55M181356A