

GRAPHIC DEVELOPMENT		MMD
Product name		
Project name A22C6WHW-QSG		
Project no.		
Finishing Folded sheet		
Scale 1:1		
Size Spreads 594 (W) x 210 (H) mm		
Size 148.5 (W) x 210 (H) mm		
Operator(s)		
Date amended Feb. 24, 2015		
VERSION No. 1		
APPROVAL		
QC Lithographer		
Product Manager		
Date Check		
ARTWORK DOCUMENT		
Paper 80gsm White, woodfree coated		
Numbers of colours 2C+2C		
Pantone 300C		
Spotcolor		
Aftertreatment		
<input type="checkbox"/> Cropping		
<input type="checkbox"/> Coating		
<input type="checkbox"/> Varnishing		
<input type="checkbox"/> Embossing		
<input type="checkbox"/> Cutterguide		
<input type="checkbox"/> Die-cut		
<input type="checkbox"/> Binding		
<input type="checkbox"/> Glue		

6



EN Need help?

User manual

See the digital User manual (CD-ROM) that comes with your All-in-One PC
Online help: www.philips.com/support

SC 需要帮助?

用戶手冊
參閱計算機一體機附帶的數位版用戶手冊(CD光碟)
線上幫助:www.philips.com/support

ZH 需要協助?

用戶手冊
參閱電腦一體機隨附的數位版用戶手冊(CD光碟)
線上協助:www.philips.com/support

Version: M6A222C6Q1CHT
© 2015 Koninklijke Philips N.V. All rights reserved.
Specifications are subject to change without notice.
Philips and the Philips Shield Emblem are registered trademarks of Koninklijke Philips N.V. and are used under license from Koninklijke Philips N.V.
www.philips.com



Bar Code
Code Number



Printed in China

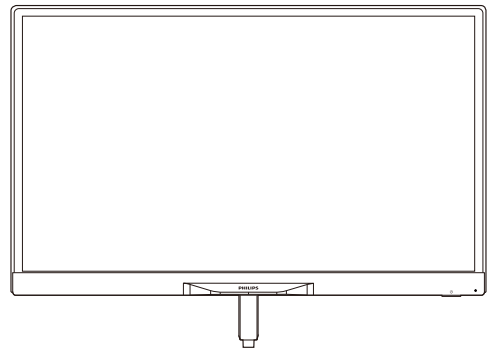
Register your product and get support at
www.philips.com/welcome

A222C

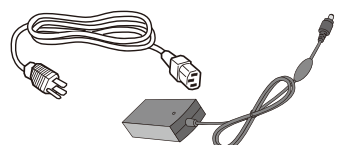
Quick
Start



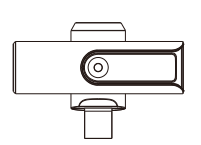
PHILIPS



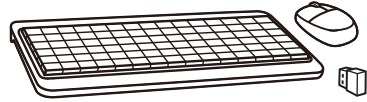
Base and Quick Screw



AC/DC Adapter



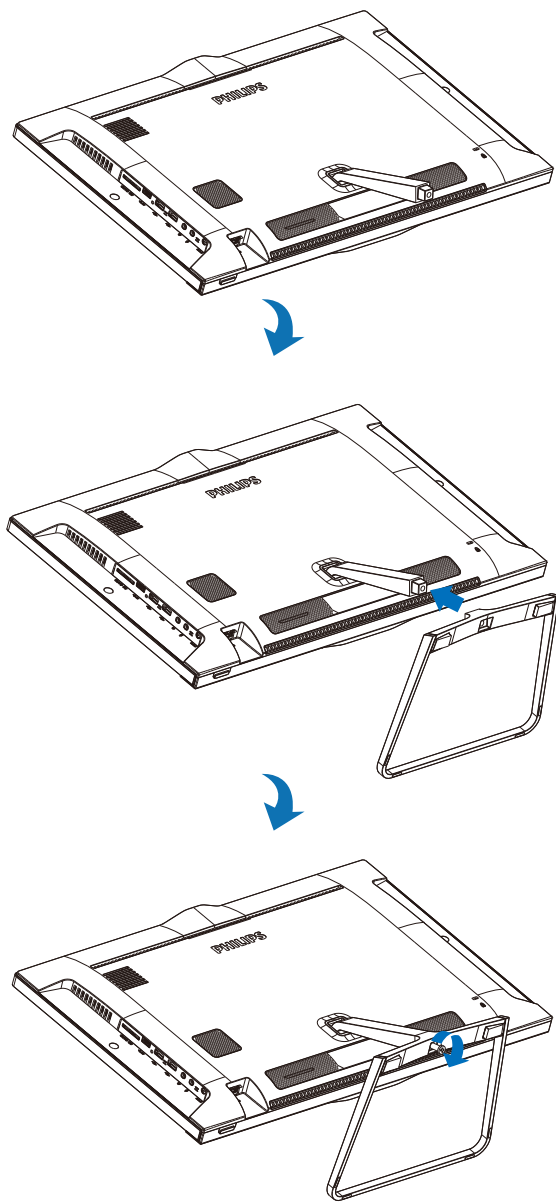
Web Cam



Keyboard, Mouse
and USB receiver dongle

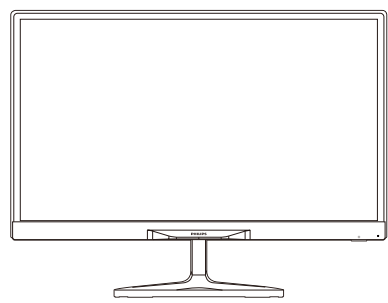
Display design may differ from that illustrated

1

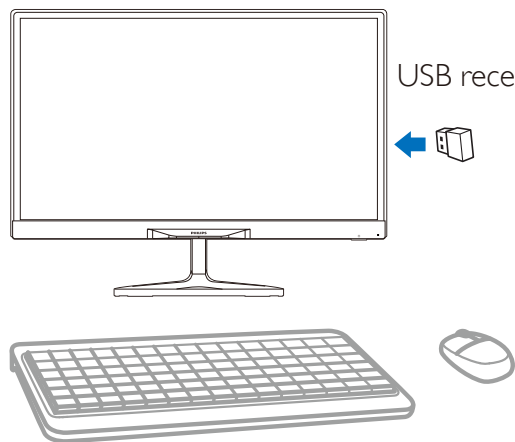


2

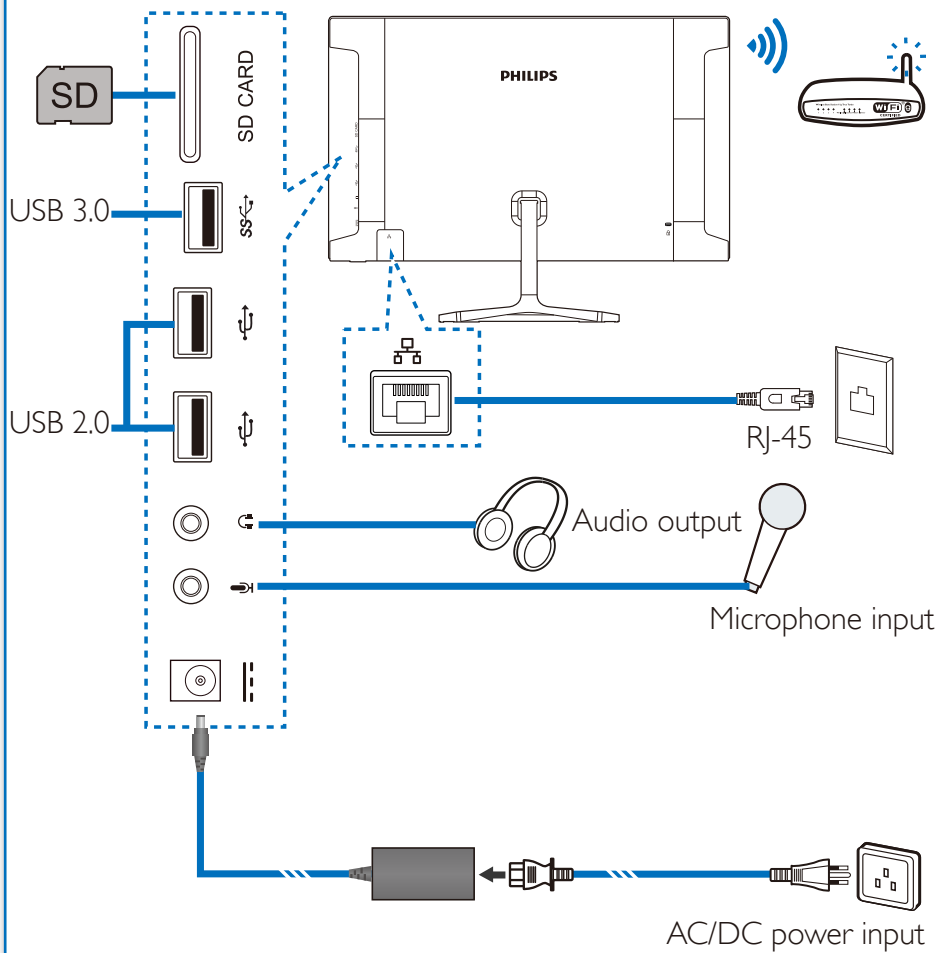
WEB CAM



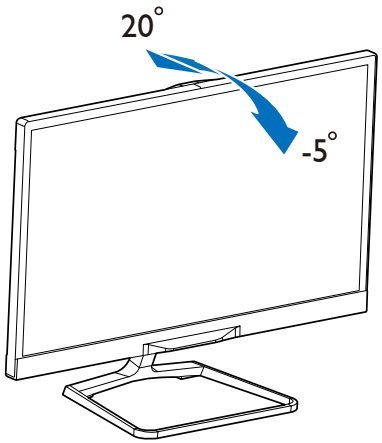
USB receiver dongle



3



4



5

