



Philips Gaming Monitor
LCD monitor with
Ambiglow

Momentum
27" (68.5 cm)
2560 x 1440 (QHD)



275M1RZ

Take gaming to the next level

This Philips Momentum monitor features both AMD FreeSync Premium and NVIDIA® G-SYNC® compatible, experience ultra-smooth, tear-free gameplay for a serious competitive edge. Nano IPS display for precise color accuracy.

Built for fast action

- 170Hz refresh rates for ultra-smooth, brilliant images
- Low input lag reduces time delay between devices to monitor
- 1ms (MPRT) fast response for crisp image and smooth gameplay

Best synchronization between GPU and monitor

- AMD FreeSync™ Premium; tear free, stutter free, fluid gaming
- Certified NVIDIA® G-SYNC® compatible for smooth fast gaming

Design to enhance the senses

- Ambiglow intensifies entertainment with halo of light
- Enhanced audio with DTS Sound™

Expand your viewing experience

- IPS Nano color technology extends gamut for vibrant visuals
- Crystalclear images with Quad HD 2560 x 1440 pixels
- High Dynamic Range (HDR) for more lifelike colorful visuals

PHILIPS

LCD monitor with Ambiglow
Momentum 27" (68.5 cm), 2560 x 1440 (QHD)

Highlights

IPS Nano color

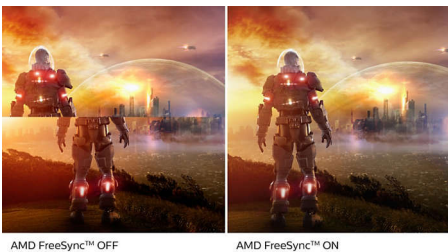


For critical imaging, gaming and productivity needs, Nano IPS display provides precise color accuracy across a wide viewing angle without color shift. Richer reds, lusher greens, and deeper blues. Ultra Wide-Color with IPS Nano Color technology uses KSF enhanced phosphor nanoparticles to absorb excess light created by the screen to produce amazing color. True-to-life color. Our display panels achieve up to 98% coverage of the DCI-P3 color gamut standard for color purity as defined by The Society of Motion Pictures and Television Engineers for cinematic picture quality.

FreeSync and G-SYNC compatible

When playing intense games with high refresh rates, screen tearing may appear without optimal graphics synchronization. This Philips Momentum display is certified both AMD FreeSync and NVIDIA® G-SYNC® compatible, reducing screen tearing and syncing your monitor's refresh rate with your graphic card's output for a smoother gaming experience. Scenes appear instantly, objects look sharper, and gameplay is smooth, giving you a stunning visual experience and a serious competitive edge.

AMD FreeSync™ Premium



Gaming shouldn't be a choice between choppy gameplay or broken frames. AMD FreeSync™

Premium equips serious gamers with a fluid, tear-free gameplay experience at peak performance. There are no compromises, game confidently with a high refresh rate, low framerate compensation, and low latency.

170Hz Gaming



You play intense, competitive gaming. You demand display with lag free, ultra-smooth images. This Philips display redraws the screen image up-to 170 times per second, effectively faster than a standard display. A lower frame rate can make enemies appear to jump from spot to spot on the screen, making them difficult targets to hit. With 170Hz frame rate, you get those critical missing images on the screen which shows enemy movement in ultra-smooth motion so you can easily target them. With ultra-low input lag and no screen tearing, this Philips display is your perfect gaming partner

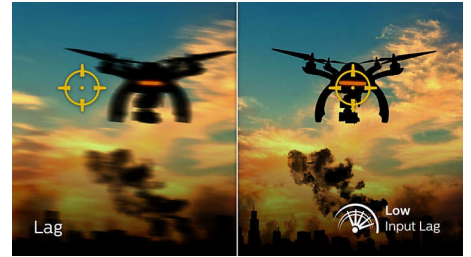
1ms MPRT fast response



MPRT (motion picture response time) is more intuitive way to describe the response time, which directly refers the duration from seeing blurry noise to clean and crisp images. Philips gaming monitor with 1 ms MPRT effectively eliminates smearing and motion blur, delivers sharper and precise visuals to enhance gaming experience. Best choice for playing thrilling and twitch-sensitive games.

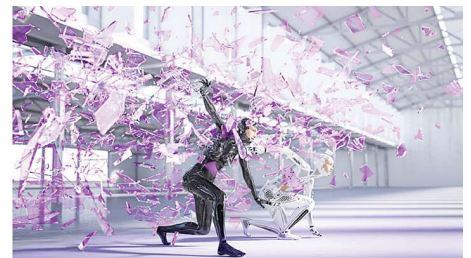
275M1RZ/69

Low Input Lag



Input lag is the amount of time that elapses between performing an action with connected devices and seeing the result on screen. Low input lag reduces the time delay between entering a command from your devices to monitor, greatly improve on playing twitch-sensitive video games, particularly important to whom plays fast-paced, competitive games.

DTS Sound™



DTS Sound is an audio processing solution designed to optimize the playback of music, movies, streaming and games on the PC regardless of form factors. DTS Sound enables an immersive virtual surround sound experience, complete with rich bass and dialog enhancement and maximized volume levels free of any clipping or distortion.



Specifications

Connectivity

- Signal Input: HDMI 2.0 x 2, DisplayPort x 1
- Sync Input: Separate Sync
- Audio (In/Out): Headphone out
- USB: USB-B x 1 (upstream), USB 3.2 x 4 (downstream with 2 fast charge B.C 1.2)
- HDCP: HDCP 2.2 (HDMI / DP)

Picture/Display

- Panel Size: 27 inch / 68.5 cm
- Aspect ratio: 16:9
- LCD panel type: IPS technology
- Backlight type: W-LED system
- Pixel pitch: 0.2331 x 0.2331 mm
- Brightness: 350 cd/m²
- Display colors: Color support 1.07 billion colors
- Color gamut (typical): NTSC 110%*, sRGB 130%*, Adobe RGB 110%*
- Color gamut (min.): DCI-P3 Coverage: 98%*
- Contrast ratio (typical): 1000:1
- SmartContrast: Mega Infinity DCR
- Response time (typical): 1 ms (Gray to Gray)*
- Viewing angle: 178° (H) / 178° (V), @ C/R > 10
- Picture enhancement: SmartImage game
- Maximum resolution: 2560 x 1440 @ 170 Hz* (DP > overclock); 2560 x 1440 @ 144 Hz (HDMI)
- Effective viewing area: 596.736 (H) x 335.664 (V) mm
- Scanning Frequency: HDMI: 30 - 230 kHz (H) / 48 - 144 Hz (V); DP: 30 - 255 kHz (H) / 48 - 170 Hz (V)
- sRGB
- Delta E: < 2 (sRGB)
- Flicker-free
- Pixel Density: 109 PPI
- LowBlue Mode
- Display Screen Coating: Anti-Glare, 3H, Haze 25%
- SmartUniformity: 97 ~ 102%
- MPRT: 1 ms
- Low Input Lag
- AMD FreeSync™ technology: Premium (DP, HDMI)
- G-SYNC: Compatible (DP)*
- HDR: HDR ready
- Ambiglow: 4-sided

Convenience

- Built-in Speakers: 5 W x 2, DTS Sound
- Plug & Play Compatibility: DDC/CI, Mac OS X, sRGB, Windows 10 / 8.1 / 8 / 7
- User convenience: Power On/Off, Menu/OK, Input/Up, Game Settings/Down, SmartImage game/Back

- OSD Languages: Brazil Portuguese, Czech, Dutch, English, Finnish, French, German, Greek, Hungarian, Italian, Japanese, Korean, Polish, Portuguese, Russian, Spanish, Simplified Chinese, Swedish, Turkish, Traditional Chinese, Ukrainian
- Other convenience: Kensington lock, VESA mount (100x100mm)

Stand

- Height adjustment: 130 mm
- Swivel: -/+ 35 degree
- Tilt: -5/20 degree

Power

- Power supply: External, 100-240VAC, 50-60Hz
- Off mode: 0.3 W (typ.)
- On mode: 48.23 W (typ.)
- Standby mode: 0.5 W (typ.)
- Power LED indicator: Operation - White, Standby mode- White (blinking)

Dimensions

- Packaging in mm (WxHxD): 730 x 475 x 224 mm
- Product without stand (mm): 614 x 370 x 75 mm
- Product with stand(max height): 614 x 567 x 251 mm

Weight

- Product with packaging (kg): 8.38 kg
- Product with stand (kg): 6.11 kg
- Product without stand (kg): 3.97 kg

Operating conditions

- Altitude: Operation: +12,000ft (3,658m), Non-operation: +40,000ft (12,192m)
- Temperature range (operation): 0°C to 40 °C
- MTBF: 50,000 (Excluded backlight) hour(s)
- Relative humidity: 20%-80 %
- Temperature range (storage): -20°C to 60 °C

Sustainability

- Environmental and energy: RoHS
- Recyclable packaging material: 100 %
- Specific Substances: Mercury free, PVC / BFR free housing

Compliance and standards

- Regulatory Approvals: CB, CE Mark

Cabinet

- Color: Black
- Finish: Textured / Glossy



Issue date 2024-03-25

Version: 8.0.1

EAN: 87 12581 77080 8

© 2024 Koninklijke Philips N.V.
All Rights reserved.

Specifications are subject to change without notice.
Trademarks are the property of Koninklijke Philips N.V.
or their respective owners.

www.philips.com

- * "IPS" word mark / trademark and related patents on technologies belong to their respective owners.
- * The maximum resolution works for DP input only.
- * Response time value equal to SmartResponse
- * For best output performance, please always ensure that your graphic card is capable of achieving the maximum resolution and refresh rate of this Philips display.
- * MPRT is to adjust brightness for blur reduction, so cannot adjust brightness while MPRT is turned on. To reduce motion blur, LED backlight will strobe synchronously with screen refresh, which may cause noticeable brightness change.
- * MPRT is gaming-optimized mode. Turn on MPRT may cause noticeable screen flickering. It is recommended to turn off when you are not using the gaming function.
- * BT. 709 / DCI-P3 Coverage based on CIE1976
- * NTSC Area based on CIE1976
- * sRGB Area based on CIE1931
- * Adobe RGB Coverage based on CIE1976
- * 2020 Advanced Micro Devices, Inc. All rights reserved. AMD, the AMD Arrow logo, AMD FreeSync™ and combinations thereof are trademarks of Advanced Micro Devices, Inc. Other product names used in this publication are for identification purposes only and may be trademarks of their respective companies.
- * NVIDIA® G-SYNC® support interface: DisplayPort
- * Make sure to update NVIDIA® G-SYNC® driver to the latest version, see more information on NVIDIA website: <https://www.nvidia.com/>
- * Make sure your graphic card supports NVIDIA® G-SYNC®
- * © 2019 NVIDIA, the NVIDIA logo, and NVIDIA G-SYNC are trademarks and/or registered trademarks of NVIDIA Corporation in the U.S. and other countries.
- * The monitor may look different from feature images.