



Philips Brilliance  
LCD monitor with Clinical  
D-image

Clinical review display  
27" (68.6 cm)  
2560 x 1440 (3.6 MP)



C272P4QPKW

## Clinical Review Display with Brilliant Images

This Philips display is ideal for an everyday clinical care environment. D-image pre-set gives you consistent DICOM greyscale medical images. Its medical-grade power supply ensures basic safety. Anti-microbial housing inhibits bacterial growth.

### Brilliant performance

- Built-in stereo speakers for multimedia
- PLS Quad HD technology ensures 8 bit colour, 109 ppi images
- Webcam with mic to connect and collaborate
- PowerSensor saves up to 80% energy costs
- DisplayPort offers audio and video over a single, long cable
- MultiView enables active dual connect and view at the same time

### Clinical Review

- Antimicrobial housing actively inhibits bacterial growth
- Design complements clinical environment
- Medical-grade power supply ensures safety with low emission
- Clinical D-image pre-set for DICOM part 14 Greyscale images
- SmartImage Clinic for common display settings

### Designed for people

- Low bezel-to-table height for maximum reading comfort

# PHILIPS

# Highlights

## Clinical D-image

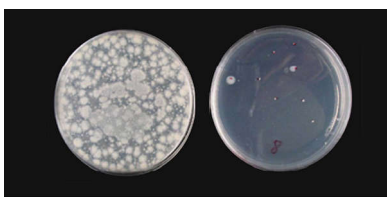


Monitors must show medical images consistently with high quality to achieve reliable interpretations. The rendering of medical Greyscale images on standard monitors is mostly inconsistent at best, making them unsuitable for use in a clinical environment. Philips clinical review displays with clinical D-image pre-set are factory-calibrated to give DICOM part 14 compatible Greyscale standard display performance. By using high-quality LCD panels with LED technology, Philips offers you consistent and reliable performance at an affordable price. Further info on <http://medical.nema.org/>

## SmartImage Clinic

SmartImage is an exclusive, leading-edge Philips technology that analyses the content displayed on your screen, and based on different applications/images displayed on a monitor, SmartImage optimises display content by dynamically adjusting brightness, contrast, colour and sharpness in real time.

## Antimicrobial housing



Before After 24 hours



Germs have become a growing problem in hospitals and clinical environments worldwide as they can cause life-threatening infections. Philips clinical review displays take care of this challenge by using a JIS Z2801-compliant antimicrobial additive in its housing material making it an integral part of the display housing. Your wellbeing, along with your patients, is now assured by this protective shield that

impedes the growth of the most common microorganisms, such as "Staphylococcus aureus (Gastroenteritis)", "Escherichia coli (E Coli)" and "Klebsiella (Pneumonia)", for example.

## Medical-grade power supply

Basic safety, essential performance and reliability are essential requirements in a professional clinical environment. Unlike standard displays, Philips clinical review displays employ special medical-grade power supplies in order to meet these requirements. It complies with the EN/IEC 60601-1 standard ensuring basic safety and essential performance. It also complies with the EN/IEC 60601-1-2 collateral standard for medical-grade electromagnetic tests and compatibility. Many countries, hospitals and clinics mandate compliance to these standards as a requirement.

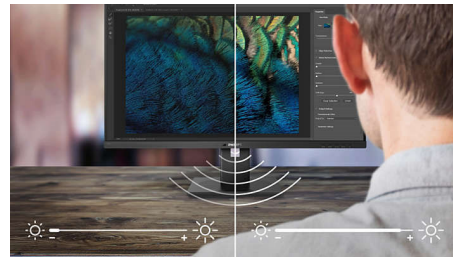
## PLS Quad HD

This professional Philips display uses the latest PLS Quad HD panel giving you ultra high-res brilliant wide angle images with 2560x1440 pixel resolution. With excellent 8 bit colour depth combined with 109 ppi density, you can now enjoy professional true colour sRGB images compared to limited 6 bit colour depth displays with 82ppi density. Its higher brightness and lower power consumption compared to conventional wide view angle displays ensure you always have brilliant performance, while saving energy too. It is best suited for professional applications like CAD, Graphics design, Image rendering etc.

## MultiView technology

MultiView for Clinical enables active dual-connect and view at same time. With the ultra-high resolution Philips MultiView display you can now experience maximum productivity in a convenient, clean setup. MultiView for Clinical enables active dual-connect and view so that you can work with multiple PCs or devices side-by-side simultaneously, making complex multi-tasking work a breeze. MultiView side-by-side viewing of two different sources is ideal within the clinical environment for comparison of data and images on the same screen.

## PowerSensor



PowerSensor is a built-in 'people sensor' that transmits and receives harmless infrared signals to determine if the user is present and then automatically reduces monitor brightness when the user steps away from the desk, cutting energy costs by up to 80 percent and prolonging monitor life

## Built-in stereo speakers



A pair of high-quality stereo speakers built into a display device. They may be visible front firing, or invisible down firing, top firing, rear firing etc. depending on model and design.

## Webcam

Embedded webcam and microphone enables you to view and communicate with your colleagues and clients. This simple solution allows you to collaborate and share, saving precious time and travel-related costs.

## DisplayPort

DisplayPort is a digital link from PC to Monitor without any conversion. With higher capabilities than DVI standard, it is fully capable of supporting cables of up to 15 metres and 10.8 Gbps/sec data transfer. With this high performance and zero latency, you get the fastest imaging and refresh rates - making DisplayPort the best choice for not only general office or home use, but also for demanding media and more. It also keeps interoperability in mind via use of various adapters.



# Specifications

## Connectivity

- Signal Input: DisplayPort 1.2, DVI-D (digital, HDCP), HDMI x 2
- USB: USB 2.0 upstream (for webcam)
- Sync Input: Separate Sync, Sync on Green
- Audio (In/Out): PC audio-in, Headphone out
- Built-in speakers: 2 W x 2

## Picture/Display

- Panel Size: 27 inch/68.6 cm
- Aspect ratio: 16:9
- LCD panel type: PLS LCD
- Backlight type: W-LED system
- Pixel pitch: 0.233 x 0.233 mm
- Optimum resolution: 2560 x 1440 @ 60Hz
- Brightness: 300 cd/m<sup>2</sup>
- DICOM calibrated brightness: 285 cd/m<sup>2</sup>
- Display colours: 16.7 M (True 8 bit)
- Contrast ratio (typical): 1000:1
- Response time (typical): 12 ms
- Viewing angle: 178° (H)/178° (V), @ C/R > 10
- Picture enhancement: SmartImage Clinic
- Effective viewing area: 596.74 (H) x 335.66 (V)
- Scanning Frequency: 30 - 90 kHz (H) / 56 - 75 Hz (V)
- sRGB
- DICOM: Clinical D-image, DICOM part-14

## Convenience

- Plug and Play Compatibility: DDC/CI, Mac OS X, sRGB, Windows 8/7/Vista
- User convenience: SmartImage Clinic, Menu, Multi-view, Power On/Off, User
- OSD Languages: Brazil Portuguese, Czech, Dutch, English, Finnish, French, German, Greek, Hungarian, Italian, Japanese, Korean, Polish, Portuguese, Russian, Simplified Chinese, Spanish, Swedish, Traditional Chinese, Turkish, Ukrainian
- Other convenience: Kensington lock, VESA mount (100 x 100 mm)
- Control software: SmartControl Premium
- MultiView: PIP/PBP mode, 2 x devices
- Built-in webcam: 2.0 megapixel camera with microphone and LED indicator

## Stand

- Height adjustment: 150 mm
- Pivot: 90 degree
- Swivel: -65/65 degree
- Tilt: -5/20 degree

## Power

- Off mode: Zero watts with Zero switch
- On mode: 27.8 W (typ.) (EnergyStar 6.0 test method)
- Standby mode: 0.3 W (typ.)
- Power LED indicator: Operation - White, Standby mode - White (flashing)
- External power supply: 100-240VAC, 50-60 Hz (Medical cert.: IEC60601-1/EN60601-1)

## Dimensions

- Packaging in mm (W x H x D): 750 x 234 x 490 mm
- Product without stand (mm): 639 x 405 x 64 mm
- Product with stand (max height): 639 x 580 x 242 mm

## Weight

- Product with packaging (kg): 11.35 kg
- Product with stand (kg): 8.5 kg
- Product without stand (kg): 5.7 kg

## Operating conditions

- Altitude: Operation: +12,000 ft (3658 m), Non-operation: +40,000 ft (12,192 m)
- Temperature range (operation): 0°C to 40°C °C
- MTBF: 40,000 hour(s)
- Relative humidity: 20%–80% %
- Temperature range (storage): -20°C to 60°C °C

## Antimicrobial

- Anti-microbial housing
- JISZ2801 Anti-microbial housing

## Sustainability

- Environmental and energy: EnergyStar 6.0, PowerSensor, RoHS
- Recyclable packaging material: 100 %
- Specific Substances: PVC/BFR free housing, Mercury free

## Compliance and standards

- EMC: IEC/EN60601-1-2, CE Mark
- Ergonomic/Others: JIS Z2801, Energy Star, TUV Ergo, TUV/GS, ISO 13485 certified, WEEE
- Safety: IEC/EN60601-1, CE Mark, GOST

## Cabinet

- Finish: Texture
- Foot: White
- Front bezel: White
- Rear cover: White



Issue date 2024-04-24

Version: 5.0.1

EAN: 87 12581 70242 7

© 2024 Koninklijke Philips N.V.  
All Rights reserved.

Specifications are subject to change without notice.  
Trademarks are the property of Koninklijke Philips N.V.  
or their respective owners.

[www.philips.com](http://www.philips.com)

\* Please note: Any use as a primary diagnostic tool is the sole responsibility of the hospital or clinic operator only.  
\* DICOM is the registered trademark of the NEMA for its standards publications relating to digital communications of medical information.