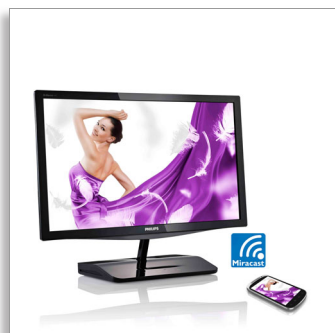




Philips Brilliance  
LCD monitor with  
Miracast

### Blade 2

23" (58.4 cm)  
1920 x 1080



239C4QHWAB

## Easily share your screen

thinner and lighter meets bigger and brighter

The new Philips Blade 2 display featuring Miracast allows you to wirelessly share Full HD content from your small screen to the big screen.

### Brilliant performance

- IPS LED wide view technology for image and colour accuracy
- SmartImage: Optimised user-friendly display experience
- SmartKolor for rich vibrant images
- SmartContrast 20,000,000:1 for incredible rich black details
- SmartText for an optimised reading experience

### Design that complements any interior

- Stylish, ultra-slim design for modern looks
- Superb glossy finish with distinctive features

### Entertainment with Miracast and MHL

- Charge your mobile device while watching a movie
- MHL technology for enjoying mobile content on a big screen
- Optional MHL cable allows for HD video audio playback
- Wirelessly view Full HD content with Miracast

# PHILIPS

# Highlights

## IPS technology

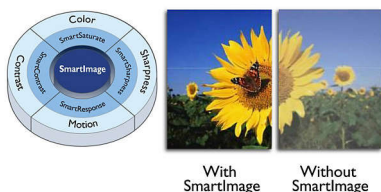


IPS

TN

IPS displays use advanced technology that gives you extra-wide viewing angles of 178/178 degrees, making it possible to view the display from almost any angle — even in 90-degree Pivot mode! Unlike standard TN panels, IPS displays gives you remarkably crisp images with vivid colours, making it ideal not only for Photos, films and web browsing, but also for professional applications that demand colour accuracy and consistent brightness at all times.

## SmartImage

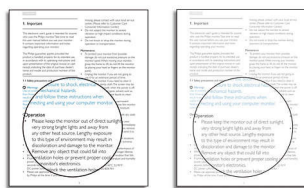


With SmartImage

Without SmartImage

SmartImage is an exclusive leading edge Philips technology that analyses the content displayed on your screen and gives you optimised display performance. This user-friendly interface allows you to select various modes like Office, Image, Entertainment, Economy etc., to fit the application in use. Based on the selection, SmartImage dynamically optimises the contrast, colour saturation and sharpness of images and videos for ultimate display performance. The Economy mode option offers you major power savings. All in real time with the press of a single button!

## SmartTxt



SmartTxt On

SmartTxt Off

SmartTxt is a sophisticated algorithm that enhances reading of text-based applications such as PDF documents and eBooks, which usually requires more focus and concentration. The SmartTxt feature increases the contrast and boundary sharpness of text content for better readability. Optimisation for reading is achieved by adjusting the display's grey level scale along with white balance, brightness and contrast.

## SmartKolor



SmartKolor On

SmartKolor Off

SmartKolor is a sophisticated colour extension technology that is able to enhance the visual colour range of the display. By boosting the RGB gain level of the display, you can achieve rich, vibrant images to experience outstanding photos and videos.

## Miracast Technology



With Miracast technology you can wirelessly share your content from most Android®

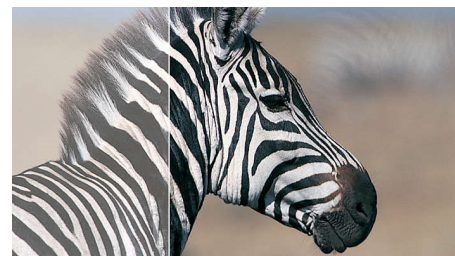
powered devices on your Philips monitor in Full HD video quality and 5.1-channel audio.

## MHL technology



Mobile High-Definition Link (MHL) is a mobile audio/video interface for directly connecting mobile phones and other portable devices to high-definition displays. An optional MHL cable allows you to simply connect your MHL-capable mobile device to this large Philips MHL display and watch your HD videos come to life with full digital sound. Now not only can you enjoy your mobile games, photos, movies or other apps on its big screen, you can simultaneously charge your mobile device so you never run out of power halfway.

## SmartContrast ratio 20,000,000:1



You want the LCD flat display with the highest contrast and most vibrant images. Philips advanced video processing combined with unique extreme dimming and backlight-boosting technology results in vibrant images. SmartContrast will increase the contrast with excellent black level and accurate rendition of dark shades and colours. It gives a bright, lifelike picture with high contrast and vibrant colours.

## Charge mobile device

Charge your mobile device while watching a movie

# Specifications

## Connectivity

- Signal Input: MHL-HDMI (digital, HDCP), VGA (Analogue)
- Sync Input: Separate Sync, Sync on Green
- Audio (In/Out): HDMI audio out

## Picture/Display

- Panel Size: 23 inch/58.4 cm
- Aspect ratio: 16:9
- LCD panel type: IPS LCD
- Backlight type: W-LED system
- Pixel pitch: 0.265 x 0.265 mm
- Optimum resolution: 1920 x 1080 @ 60 Hz
- Brightness: 250 cd/m<sup>2</sup>
- Display colours: 16.7 M
- Contrast ratio (typical): 1000:1
- SmartContrast: 20,000,000:1
- Viewing angle: 178° (H)/178° (V), @ C/R > 10
- Picture enhancement: SmartImage
- Effective viewing area: 509.18 (H) x 286.41 (V)
- Scanning Frequency: 30 - 83 kHz (H)/56 - 75 Hz (V)
- sRGB
- SmartResponse (typical): 5 ms (Grey to Grey)

## Convenience

- Built-in Speakers: 3 watts x 2
- Plug and Play Compatibility: DDC/CI, Mac OS X, sRGB, Windows 7, Windows 8
- User convenience: Miracast, Menu, Turbo, Power On/Off, Input, SmartImage
- OSD Languages: Brazil Portuguese, Czech, Dutch, English, Finnish, French, German, Greek, Hungarian, Italian, Japanese, Korean, Polish, Portuguese, Russian, Simplified Chinese, Spanish, Swedish, Traditional Chinese, Turkish, Ukrainian
- Other convenience: Kensington lock

## Stand

- Tilt: -3/+15 degree

## Power

- Power supply: External, 100–240 VAC, 50–60 Hz
- Off mode: 0.3 W (typ.)
- On mode: 20.34 W (typ.) (EnergyStar 6.0 test method)
- Standby mode: 0.5 W (typ.)
- Power LED indicator: Operation - White, Standby mode - White (flashing)

## Dimensions

- Product with stand (mm): 550 x 421 x 194 mm
- Packaging in mm (W x H x D): 604 x 585 x 158 mm
- Product without stand (mm): 550 x 339 x 34 mm

## Weight

- Product with packaging (kg): 6.49 kg
- Product with stand (kg): 4.15 kg

## Operating conditions

- Altitude: Operation: +12,000 ft (3658 m), Non-operation: +40,000 ft (12,192 m)
- Temperature range (operation): 0 to 40 °C
- MTBF: 30,000 hour(s)
- Relative humidity: 20%–80% %
- Temperature range (storage): -20 to 60 °C

## Sustainability

- Environmental and energy: EnergyStar 6.0, RoHS, Mercury Free
- Recyclable packaging material: 100 %

## Compliance and standards

- Regulatory Approvals: BSMI, CE Mark, FCC Class B, GOST, SASO, SEMKO, TUV/ISO9241-307, WEEE, UL/cUL

## Cabinet

- Finish: Glossy
- Foot: Black
- Front bezel: Black
- Rear cover: Black



Issue date 2024-04-02

Version: 2.0.1

EAN: 87 12581 70250 2

© 2024 Koninklijke Philips N.V.  
All Rights reserved.

Specifications are subject to change without notice.  
Trademarks are the property of Koninklijke Philips N.V.  
or their respective owners.

[www.philips.com](http://www.philips.com)

\* This Philips display is MHL-certified. However, if your MHL device does not connect or work correctly, check with your MHL device FAQ or vendor directly for instructions. The policy of your device manufacturer may require you to purchase its brand-specific MHL cable or adapter in order for it to work

\* Standby/Off energy saving of ErP is not applicable for the MHL charging functionality

\* Requires optional MHL-certified mobile device and MHL cable (not included). Please check with your MHL device vendor for compatibility.

\* "IPS" word mark / trademark and related patents on technologies belong to their respective owners.

\* Smart response time is the optimum value from either GtG or GtG (BW) tests.