

Philips Monitor
4K Ultra HD LCD monitor

E Line
28" (71.1 cm)
3840 x 2160 (4K UHD)

288E2UAE



Experience true color, unconstrained visuals

This Philips 4K UHD monitor features stunning, ultra-clear visuals and stylish design for your workspace. Equipped with USB 3.2 for SuperSpeed data transfer and fast charging, and MultiView meets the need for usability and productivity.

Superb Picture Quality

- UltraClear 4K UHD (3840x2160) resolution for precision
- Ultra Wide-Color wider range of colors for a vivid picture
- 1.07 billion colors for stunning color and finest gradations
- IPS LED wide view technology for image and color accuracy
- SmartContrast for rich black details

Good for Gaming

- Effortlessly smooth gameplay with AMD FreeSync™ technology
- SmartImage game mode optimized for gamers

Features designed for you

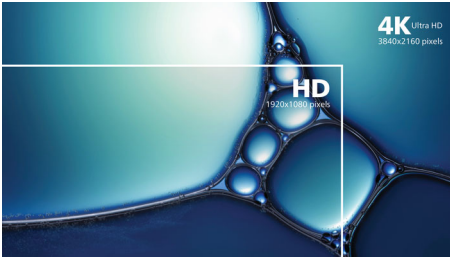
- Less eye fatigue with Flicker-free technology
- LowBlue Mode for easy on-the-eyes productivity
- MultiView enables simultaneous dual connection and view
- Cable management reduces cable clutter for neat workspace
- EasySelect menu toggle key for quick on-screen menu access

PHILIPS

4K Ultra HD LCD monitor
E Line 28" (71.1 cm), 3840 x 2160 (4K UHD)

Highlights

UltraClear 4K UHD Resolution



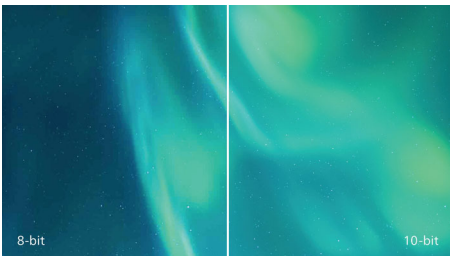
These Philips displays utilize high performance panels to deliver UltraClear, 4K UHD (3840 x 2160) resolution images. Whether you are demanding professional requiring extremely detailed images for CAD solutions, using 3D graphics applications or a financial wizard working on huge spreadsheets, Philips displays will make your images and graphics come alive.

Ultra Wide-Color Technology



Ultra Wide-Color Technology delivers a wider spectrum of colors for a more brilliant picture. Ultra Wide-Color wider "color gamut" produces more natural-looking greens, vivid reds and deeper blues. Bring, media entertainment, images, and even productivity more alive and vivid colors from Ultra Wide-Color Technology.

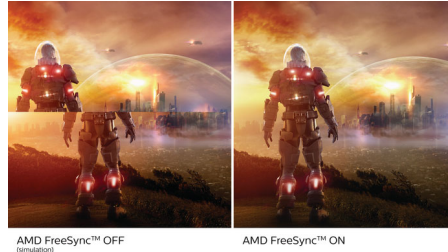
1.07 billion colors



This display delivers outstanding color depth with 1.07 billion colors, and the finest gradation, for re-creating smooth, precise, and vivid image. Enjoy accurate and true-to-life

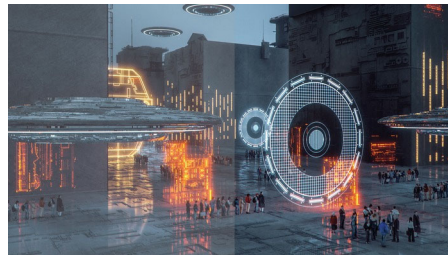
visuals whether gaming, watching videos, or working on color critical work with graphics applications.

Ultra-smooth gaming



Gaming shouldn't be a choice between choppy gameplay or broken frames. With the new Philips monitor it doesn't have to be. Get fluid, artifact-free performance at virtually any framerate with AMD FreeSync™ technology, smooth quick refresh and ultra-fast response time.

SmartImage Game mode



The new Philips gaming display has quick access OSD fine tuned for gamers, offering you multiple options. "FPS" mode (First person shooting) improves dark themes in games, allowing you to see hidden objects in dark areas. "Racing" mode adapts display with fastest response time, high color, along with image adjustments. "RTS" mode (Real time strategy) has a special SmartFrame mode which enables highlighting of specific area and allows for size and image adjustments. Gamer 1 and Gamer 2 enable you to save personal customized settings based on different games, ensuring best performance.

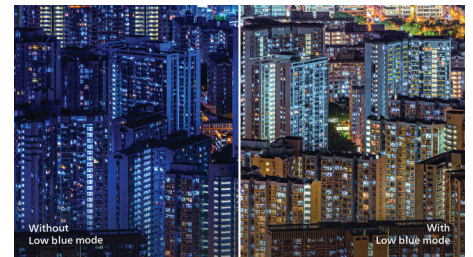
288E2UAE/89

Flicker-free technology



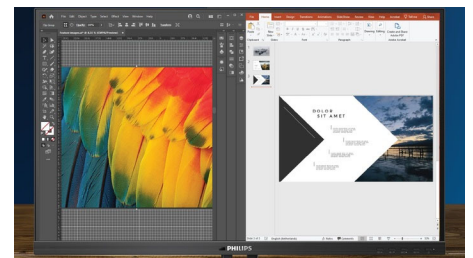
Due to the way brightness is controlled on LED-backlit screens, some users experience flicker on their screen which causes eye fatigue. Philips Flicker-free Technology applies a new solution to regulate brightness and reduce flicker for more comfortable viewing.

LowBlue Mode



Studies have shown that just as ultra-violet rays can cause eye damage, shortwave length blue light rays from LED displays can cause eye damage and affect vision over time. Developed for wellbeing, Philips LowBlue Mode setting uses a smart software technology to reduce harmful shortwave blue light.

MultiView technology



With the ultra-high resolution Philips MultiView display you can now experience a world of connectivity. MultiView enables active dual connect and view so that you can work with multiple devices like a PC and notebook simultaneously, for complex multi-tasking.



Specifications

Picture/Display

- LCD panel type: IPS technology
- Backlight type: W-LED system
- Panel Size: 28 inch / 71.1 cm
- Display Screen Coating: Anti-Glare, 3H, Haze 25%
- Effective viewing area: 620.93 (H) x 341.28 (V)
- Aspect ratio: 16:9
- Maximum resolution: 3840 x 2160 @ 60 Hz
- Pixel Density: 157 PPI
- Response time (typical): 4 ms (Grey to Grey)*
- Brightness: 300 cd/m²
- Contrast ratio (typical): 1000:1
- SmartContrast: Mega Infinity DCR
- Pixel pitch: 0.16 x 0.16 mm
- Viewing angle: 178° (H) / 178° (V), @ C/R > 10
- Picture enhancement: SmartImage game
- Color gamut (typical): NTSC 106.9%*, sRGB 119.7%*
- Display colors: Color support 1.07 billion colors
- Scanning Frequency: 30 - 140 kHz (H) / 40 - 60 Hz (V)
- SmartUniformity: 93 ~ 105%
- Delta E: < 2 (sRGB)
- Flicker-free
- LowBlue Mode
- EasyRead
- sRGB
- AMD FreeSync™ technology

Connectivity

- Signal Input: DisplayPort x 1, HDMI (digital, HDCP)
- USB: USB 3.2 x 1 (upstream), USB 3.2 x 4 (downstream with 1 fast charge B.C 1.2)
- Sync Input: Separate Sync
- Audio (In/Out): Audio out

Convenience

- Built-in Speakers: 3 W x 2
- MultiView: PIP/PBP mode, 2x devices
- User convenience: Power On/Off, Menu, Volume, Input, SmartImage Game
- OSD Languages: Brazil Portuguese, Czech, Dutch, English, Finnish, French, German, Greek, Hungarian, Italian, Japanese, Korean, Polish, Portuguese, Russian, Simplified Chinese, Spanish, Swedish, Traditional Chinese, Turkish, Ukrainian
- Other convenience: Kensington lock, VESA mount (100x100mm)
- Plug & Play Compatibility: DDC/CI, Mac OS X,

sRGB, Windows 10 / 8.1 / 8 / 7

Stand

- Height adjustment: 100 mm
- Tilt: -5/20 degree

Power

- On mode: 27.6 W (typ.) (EnergyStar test method)
- Standby mode: 0.5 W (typ.)
- Off mode: 0.3 W (typ.)
- Power LED indicator: Operation - White, Standby mode- White (blinking)
- Power supply: External, 100-240VAC, 50-60Hz

Dimensions

- Product with stand(max height): 637 x 494 x 224 mm
- Product without stand (mm): 637 x 367 x 41 mm
- Packaging in mm (WxHxD): 730 x 522 x 159 mm

Weight

- Product with stand (kg): 6.09 kg
- Product without stand (kg): 4.27 kg
- Product with packaging (kg): 8.75 kg

Operating conditions

- Temperature range (operation): 0 to 40 °C
- Temperature range (storage): -20 to 60 °C
- Relative humidity: 20%-80 %
- Altitude: Operation: +12,000ft (3,658m), Non-operation: +40,000ft (12,192m)
- MTBF: 50,000 hrs (excluding backlight) hour(s)

Sustainability

- Environmental and energy: EnergyStar 8.0, TCO Certified, RoHS
- Recyclable packaging material: 100 %
- Specific Substances: Mercury free, PVC / BFR free housing

Compliance and standards

- Regulatory Approvals: UKRAINIAN, cETLus, CB, TUV/GS, TUV Ergo, CU-EAC, EAEU RoHS, CE Mark

Cabinet

- Color: Black
- Finish: Textured



Issue date 2023-05-02

Version: 3.0.1

12 NC: 8670 001 78406
EAN: 87 12581 77878 1

© 2023 Koninklijke Philips N.V.
All Rights reserved.

Specifications are subject to change without notice.
Trademarks are the property of Koninklijke Philips N.V.
or their respective owners.

www.philips.com

* "IPS" word mark / trademark and related patents on technologies belong to their respective owners.
* The maximum resolution works for either HDMI input or DP input.
* Response time value equal to SmartResponse
* NTSC Area based on CIE1976
* sRGB Area based on CIE1931
* 2020 Advanced Micro Devices, Inc. All rights reserved. AMD, the AMD Arrow logo, AMD FreeSync™ and combinations thereof are trademarks of Advanced Micro Devices, Inc. Other product names used in this publication are for identification purposes only and may be trademarks of their respective companies.
* The monitor may look different from feature images.