

Philips Signage Solutions
Glasses free 3D Display

50"

Edge LED Backlight
Ultra HD
Autostereoscopic 3D

BDL5071VS



The future of 3D in Ultra HD

Without the need for special glasses

The autostereoscopic 50" E-LED display offers Ultra HD resolution in both 2D and glasses free 3D, the best depth performance, widest viewing angle, lowest cross talk and deepest black-levels.

Stunning 3D experience

- 3D content visualization
- 3D & 2D dual mode display
- 3D system solution

Optimized for public viewing

- 4K UHD E-LED display, 3840x2160p
- Autostereoscopic 3D
- No need for special 3D glasses
- 28 lenticular views for amazing smooth 3D pictures

Operational flexibility

- Designed for 24/7 operation
- Optical bonding process for high contrast and bright colors
- Adjustable pop-out effects to optimize 3D effect

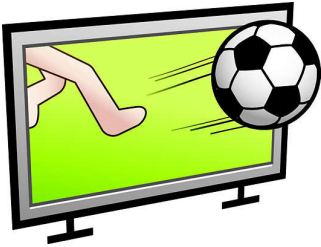
PHILIPS

Highlights

4K UHD E-LED display

Crystal clear ultra high definition picture quality to give your audience unprecedented levels of realism and viewer enjoyment. Your viewers will be treated to unsurpassed video, with an amazing color fidelity and the sharpest pictures around.

Autostereoscopic 3D



Enjoy a stunning 3D experience with no need for special glasses thanks to the autostereoscopic 3D effect. Using lenticular technology, it gives excellent clarity and depth, making your 3D experience even more lifelike and enjoyable.

No need for special 3D glasses

No need for special 3D glasses

28 lenticular views

With 28 lenticular views, you can "peek" around virtual objects on the 3D display, giving you the most stunning 3D visual effects around.

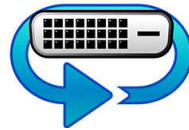
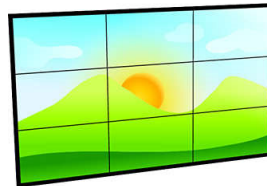
3D & 2D dual mode display

The display can be applied in a broad range of applications since it can be operated in in both 2D and 3D mode. The 4K UHD resolution panel enables great picture quality and true color representation in 2D and 3D mode. The integrated rendering core offers content creators and end-users full control over the quality and depth-effect characteristics of the picture.

Adjustable pop-out effects

Immersive out of screen pop-out effects can be adjusted to optimize the 3D effect for any application.

Designed for 24/7 operation



Because business never sleeps, our signage displays are designed for 24/7 use. Taking advantage of superior components to ensure a higher level of quality, you can count on this

range of models for complete around-the-clock reliability.

Optical bonding

Optical bonding refers to a protective glass that is glued in front of a display. A bonded display increases the contrast ratio by reducing the amount of reflected ambient light. Optical bonding improves the durability and increases the ruggedness of the display.

3D system solution

The system solution is designed for maximum reuse of content / concepts from the 2D signage industry. The key enabler for this is the flexible 2D-plus-Depth format that allows decoupling of content creation and content visualization. The rendering core integrated in the autostereoscopic 3D displays supports the unique Declipse image format which enables a true look-around 3D effect.

3D content visualization

Software tools are provided with the display to play-out 3D content and control the 3D and 2D visualization parameters. The actual 3D content can be created via plug-ins available for popular 3D animation software packages. Existing 2D or stereo content can be converted into 2D-plus-Depth format. The 2D-plus-Depth format is compatible with existing compression tools, as the additional bandwidth of the depth is small.



Specifications

Picture/Display

- Diagonal screen size (inch): 50 inch
- Aspect ratio: 16:9
- Pixel pitch: 0.2865 x 0.2865 mm
- Optimum resolution: 3840 x 2160 @ 30Hz
- Brightness: 400 cd/m²
- Display colors: 1.07 billion
- Contrast ratio (typical): 5000:1
- Response time (typical): 6.5 ms
- Viewing angle (horizontal): 150 degree
- Viewing angle (vertical): 150 degree
- 3D Technology: Fixed Lenticular 3D Technology, Autostereoscopic 3D display
- Optimal viewing distance: Adjustable
- Input format: 2D-plus-Depth in 3D mode

Connectivity

- AV input: DVI-D x1

Convenience

- Placement: Landscape
- Packaging: Reusable box

Power

- Mains power: 90 ~ 253 VAC, 50 ~ 60 Hz
- Consumption (Typical): 130 W
- Standby power consumption: <0.5W

Supported Display Resolution

- Computer formats: 3840 x 2160, 30Hz

Dimensions

- Set Width: 1160 mm
- Product weight: 45 kg
- Set Height: 680 mm
- Set Depth: 100 mm
- Wall Mount: 400 x 400 mm

Operating conditions

- Temperature range (operation): 0 ~ 50 °C
- MTBF: 50,000 hour(s)
- Relative humidity: 20 ~ 90 %
- Temperature range (storage): -20 ~ 60 °C

Accessories

- Included accessories: 3D software, 3D display control tool, 3D videoplayer (2D-plus-Depth), Quick start guide, AC Power Cord, DVI-D cable
- Optional accessories: 3D content enabling software, Table top stand

Miscellaneous

- Warranty: 1 year warranty



Issue date 2024-03-23

Version: 1.0.1

EAN: 87 12581 70180 2

© 2024 Koninklijke Philips N.V.
All Rights reserved.

Specifications are subject to change without notice.
Trademarks are the property of Koninklijke Philips N.V.
or their respective owners.

www.philips.com